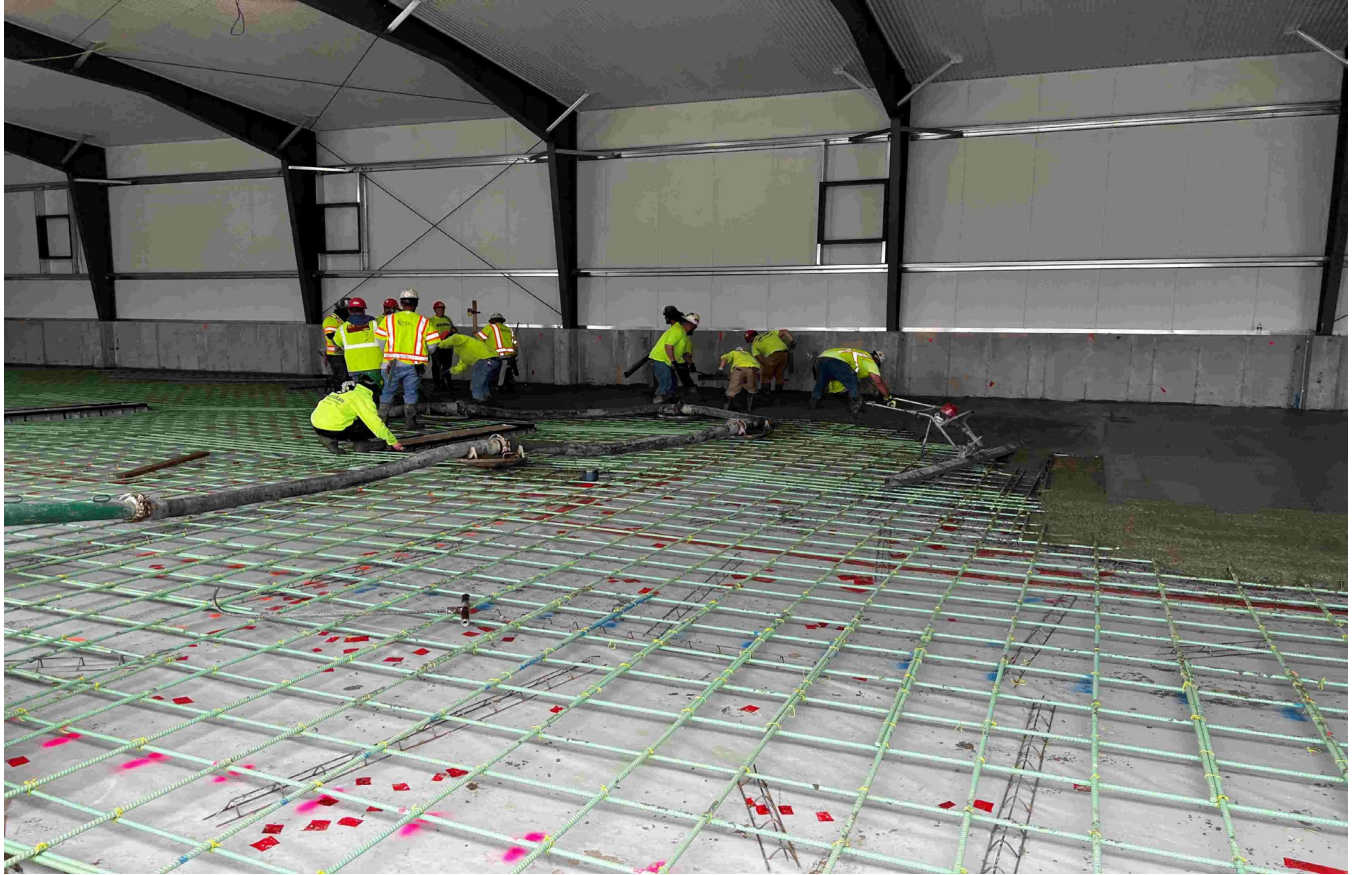


2022.08  
Litchfield 8-Bay Garage Replacement  
April 21, 2023



Crews are placing concrete slab inside the new 8 bay.

**Contractor:** Sheridan Construction Corporation

**Bid Amount:** \$2,651,753.27

**Percent Complete last approved pay estimate:** 48.8%

**Project Schedule:** Completion date November 17, 2023

**Project Scope:** Construction of an approximate 8,800 square foot pre-engineered building consisting of eight (8) vehicle storage garage bays, all site work, paving, lighting, generator removal, generator installation, relocating propane tanks, floor slab and foundation removal, maintaining facility operation areas, power utility services and site utilities. This work also includes the emergency building repairs at Auburn Maintenance facility. The building is receiving structural, electrical, and cosmetic repairs after the wing plow made contact with the building during a winter storm.

**Contractor Schedule:** Sheridan crews placed the concrete slab and are continuing on interior plumbing, electrical, and mechanical systems. On the exterior, the earth work subcontractor is working on the earth berm on the back side of the building and will start running conduits and excavating the damaged pavement in preparation for final site grading and base pavement. The generator for this project is still on back order and is anticipated to be delivered in October.