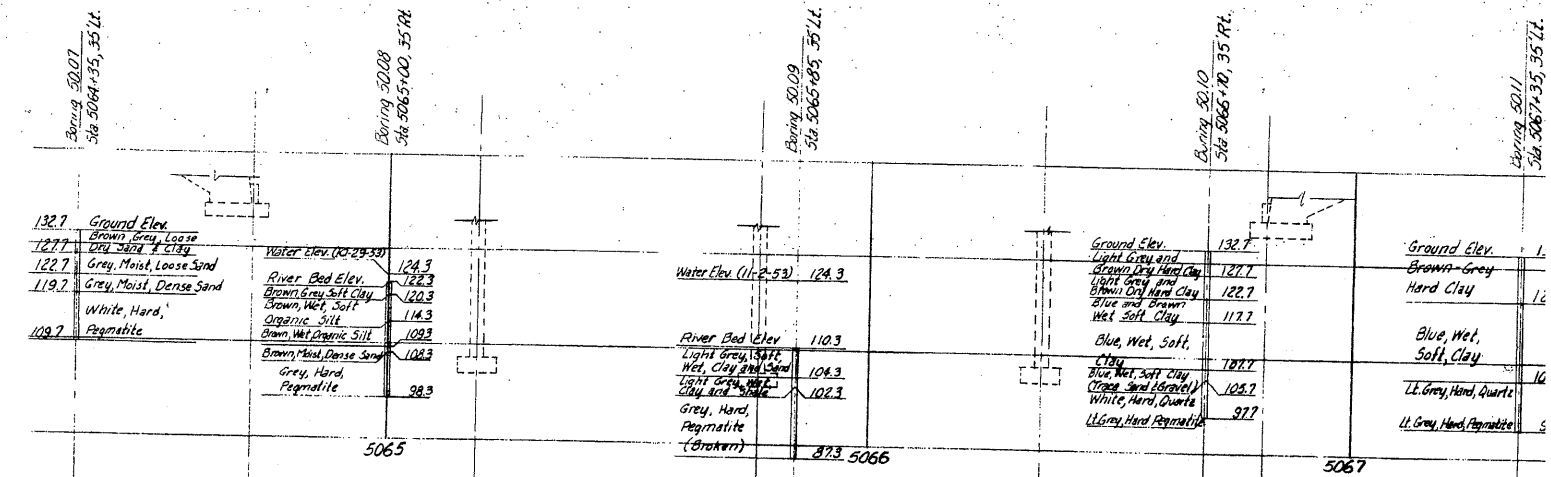


**ELEVATION**

At the option of the Contractor, Piers 1, 2 and 3 may be constructed by the use of seals which may be placed before unwatering the cofferdams. The Contractor will submit plans for approval by the Engineer. Payment will be made on the basis of quantities appropriate to the method of construction as shown on the plans.



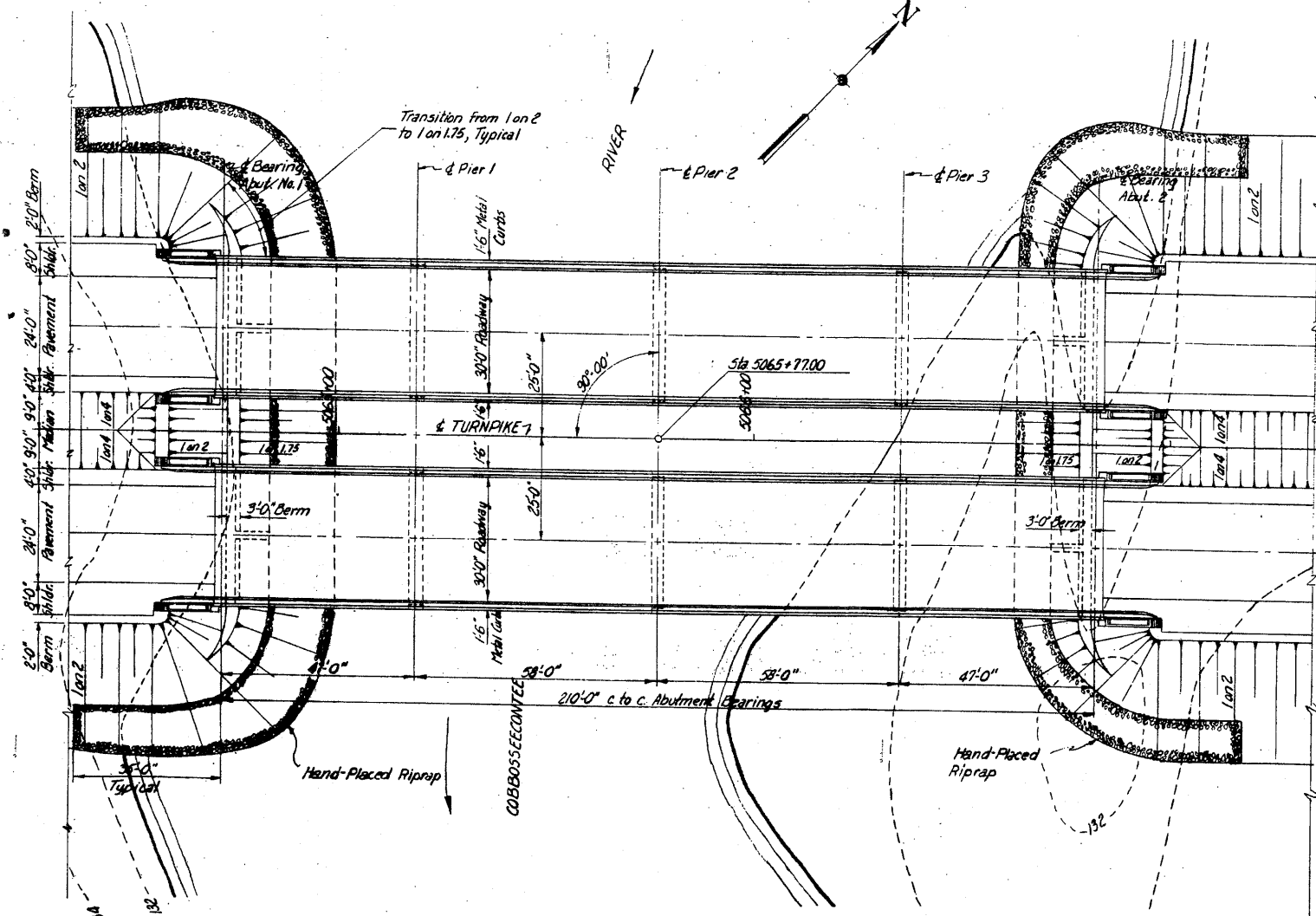
**BORING DATA**

**REFERENCES**

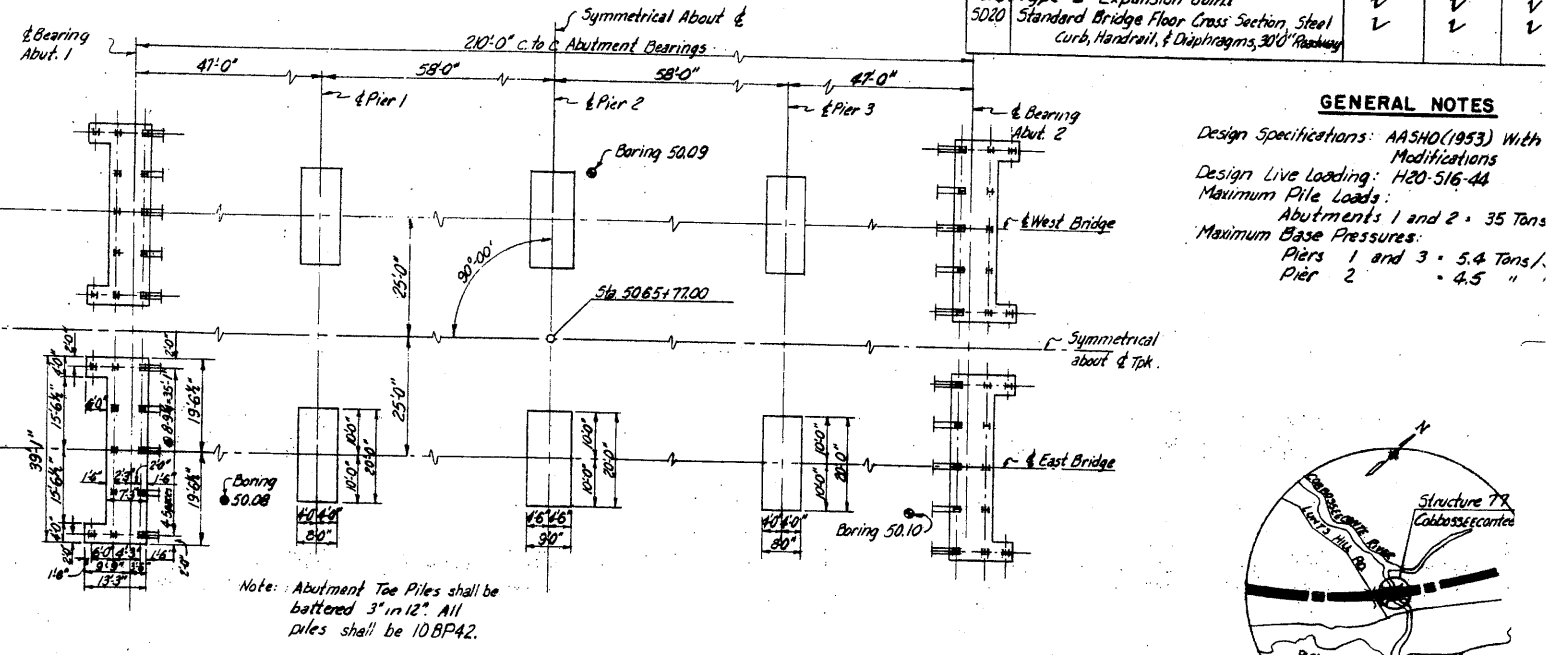
Dwg. No.	Title	Substructure Contractor	Superstructure Steel Fabricator	Superstructure Erector
SD14	Standard Abutment Details	✓	✓	✓
SD2	Standard Pier Details	✓	✓	✓
SD3	Abutment Drainage Details	✓	✓	✓
SD4	Standard Pile Details	✓	✓	✓
SD5	Standard Handrail, Barrier Devices & Miscellaneous Details	✓	✓	✓
SD5A	Standard Bearing Devices for Bridges Over Streams	✓	✓	✓
SD6	Standard Diaphragm Details	✓	✓	✓
SD8	Standard Type "N" Splices for 30W Beams	✓	✓	✓
SD12A	Type "Z" Expansion Joint	✓	✓	✓
SD20	Standard Bridge Floor Cross Section, Steel Curb, Handrail, & Diaphragms, 30' Roadway	✓	✓	✓

**GENERAL NOTES**

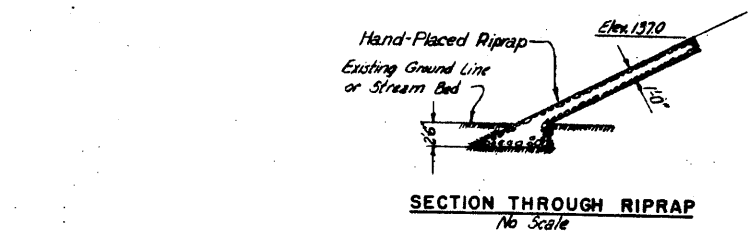
Design Specifications: AASHTO (1953) with Modifications  
 Design Live Loading: H20-516-44  
 Maximum Pile Loads:  
 Abutments 1 and 2 = 35 Tons  
 Piers 1 and 3 = 5.4 Tons/  
 Pier 2 = 4.5 "



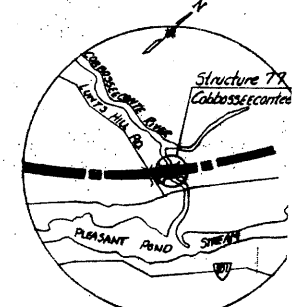
**PLAN**



**FOOTING PLAN**



**SECTION THROUGH RIPRAP**  
No Scale

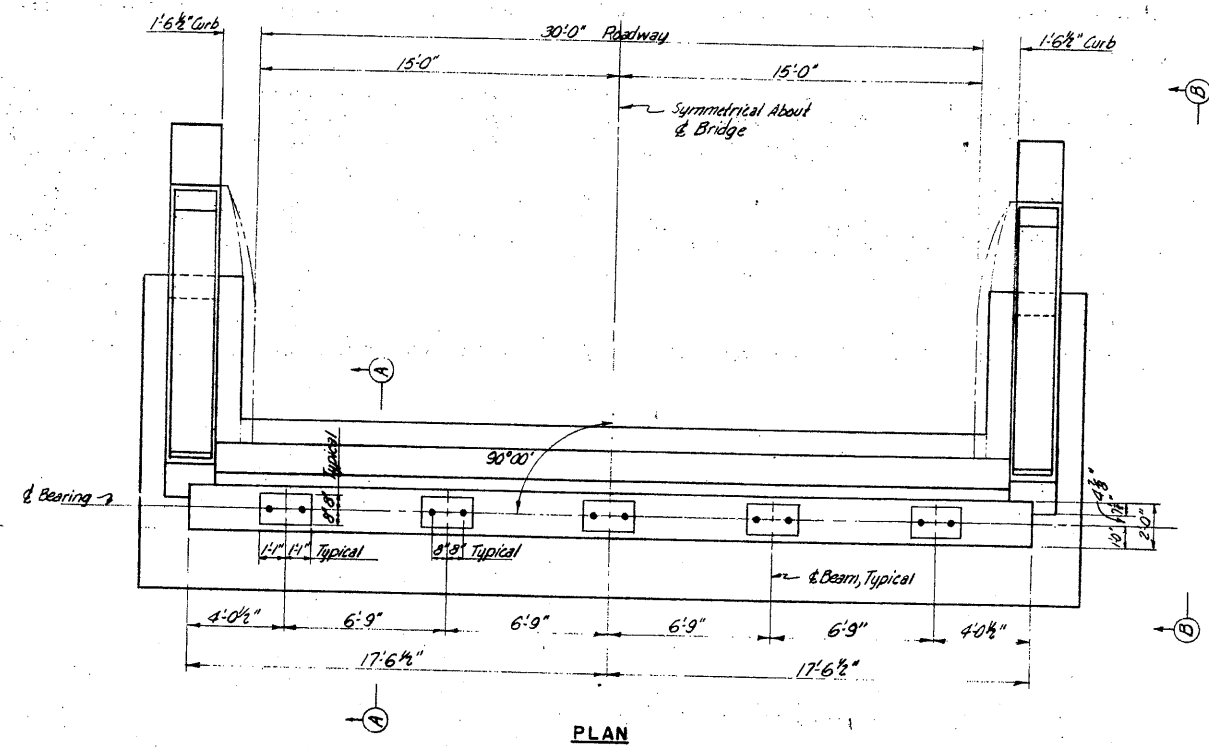


**VICINITY MAP**  
1" = 1 Mi.

**DRAWING 77.01.03**

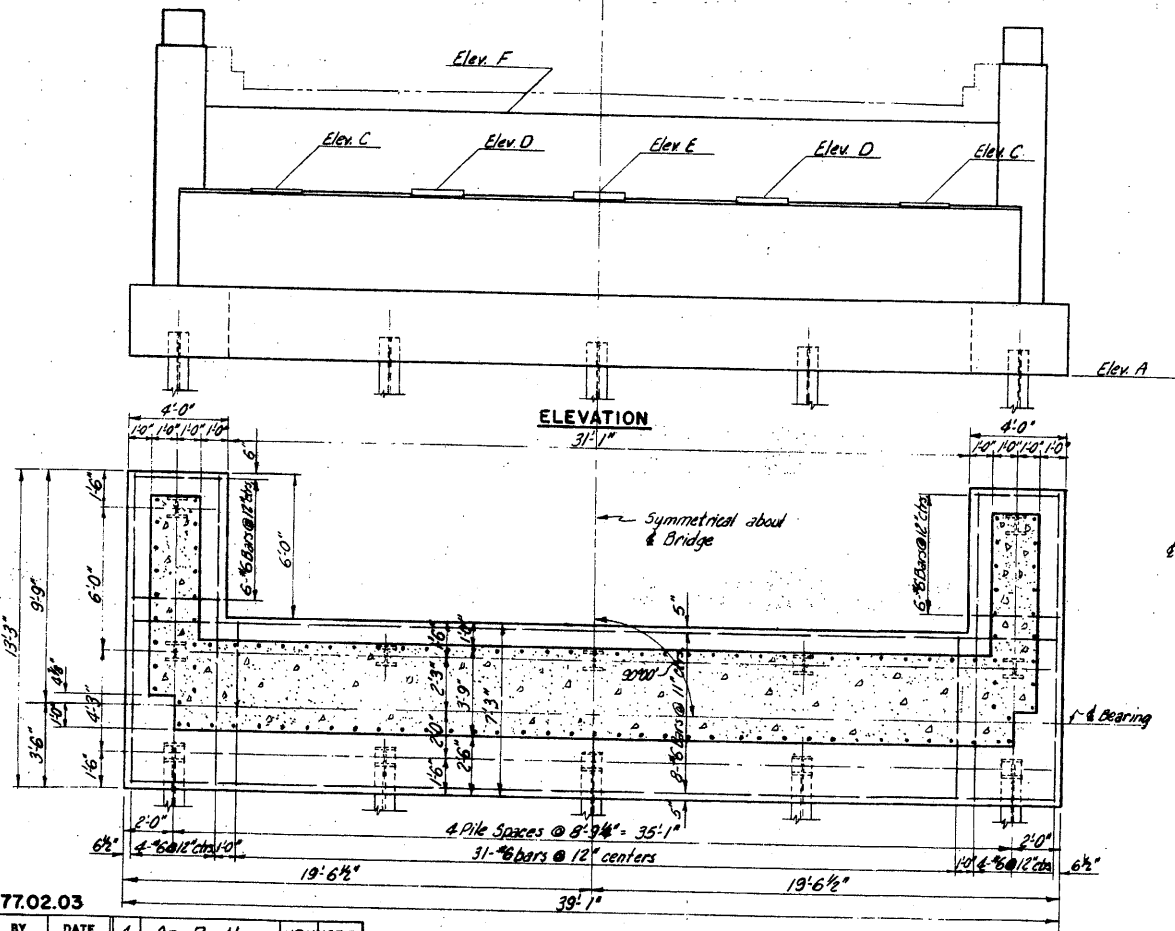
BY	DATE	REVISION	BY	DATE
AS-BUILT				
MADE	H.J.G. 1-13-54	3	Pier Ftyg. Elev.	CVA 01038
TRACED		2	Added notes under Elevation Views	REL 3-18-54
CHECKED	F.S.Jr. 1-19-54	1	Changed 17' to 16' under notes to 10' under elevations	MCH 3-1-54
IN CHARGE OF	IDSX	No.	REVISION	BY

**MAINE TURNPIKE AUTHORITY**  
**MAINE TURNPIKE**  
**SECTION 2— PORTLAND TO ALBANY**  
 STRUCTURE NO. 77 TURNPIKE OVER  
 COBBOSSEECONTEE RIVER  
 STA. 5065+77.00  
**GENERAL PLAN AND ELEVATION**  
 HOWARD, NEEDLES, TAMMEN & BERGENDOFF CONSULTING ENGINEERS  
 NEW YORK KANSAS CITY  
 SCALE: 1" = 20'  
 CONTRACT NO. 77-1  
 SHEET NO. 25

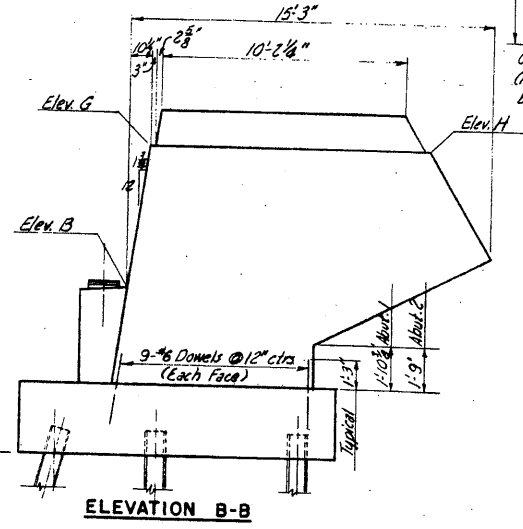


ABUTMENT ELEVATIONS		
POINT	Abut. 1W & 1E	Abut. 2W & 2E
A	136.3	135.7
B	143.39	142.76
C	143.47	142.84
D	143.59	142.96
E	143.66	143.03
F	146.87	146.24
G	149.98	148.73
H	149.41	148.70

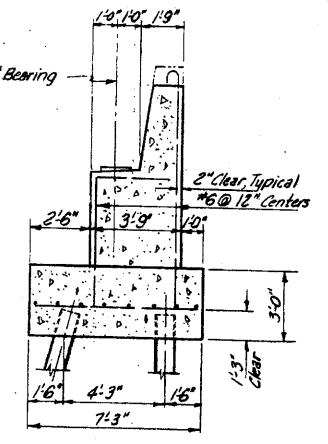
PLAN



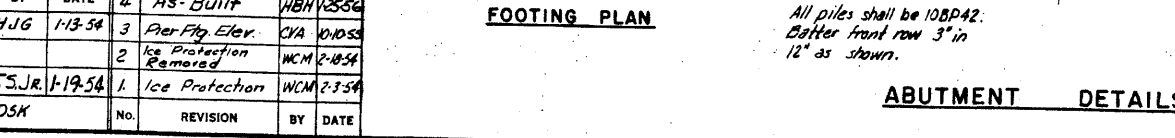
ELEVATION



ELEVATION B-B

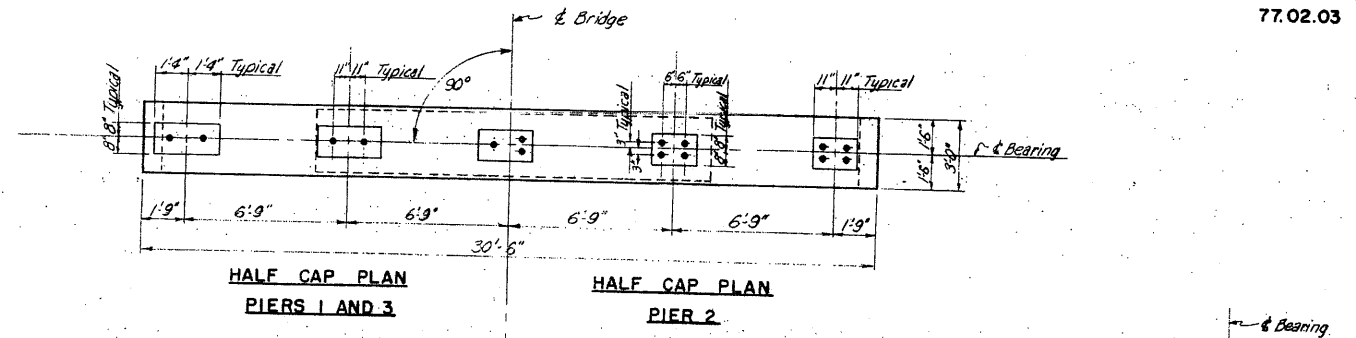


SECTION A-A



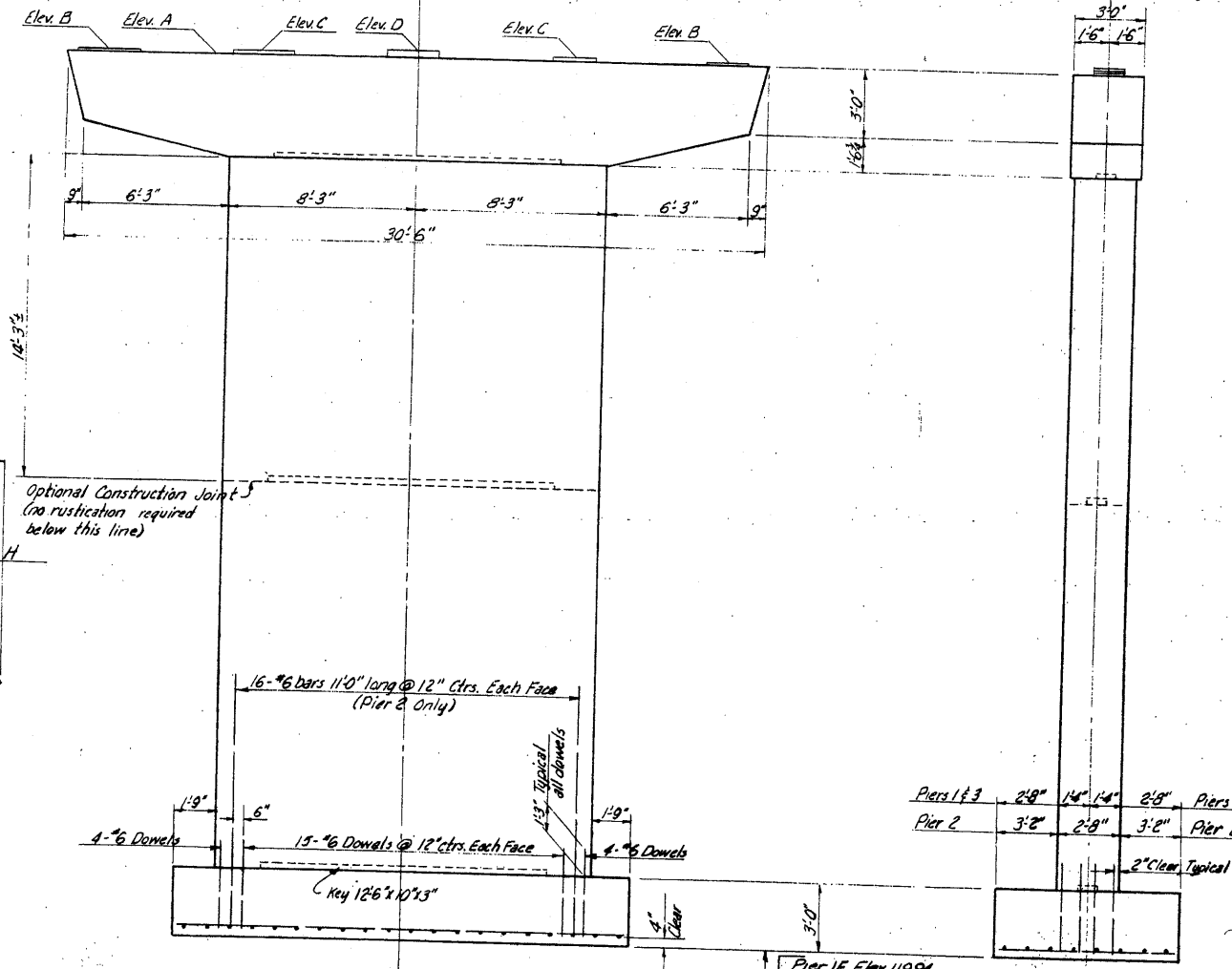
FOOTING PLAN

ABUTMENT DETAILS



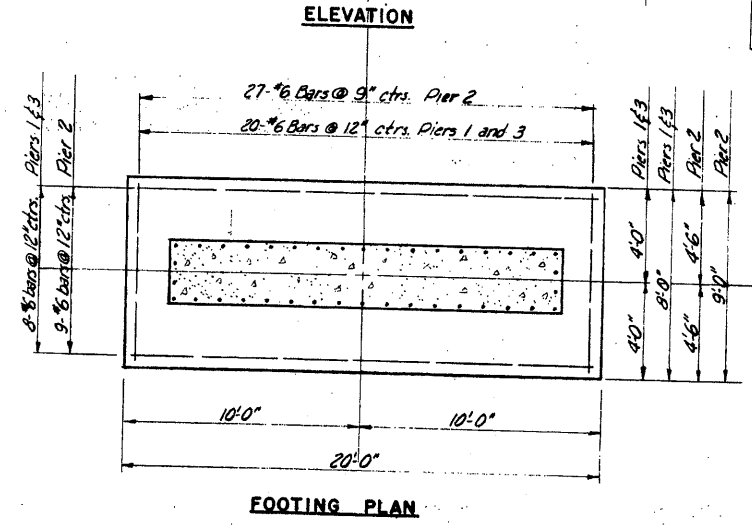
HALF CAP PLAN  
PIERS 1 AND 3

HALF CAP PLAN  
PIER 2



ELEVATION

END ELEVATION



FOOTING PLAN

PIER DETAILS

Pier 1E Elev.	119.94
Pier 1W Elev.	123.10
Pier 2E Elev.	115.70
Pier 2W Elev.	114.33
Pier 3E Elev.	109.36
Pier 3W Elev.	111.65

PIER ELEVATIONS			
Point	Pier 1	Pier 2	Pier 3
A	143.19	143.18	142.84
B	143.21	143.20	142.86
C	143.25	143.23	142.90
D	143.32	143.30	142.97

DRAWING 77.02.03				
NO	BY	DATE	REVISION	BY DATE
4	As-Built			
3	Pier Ftg Elev.	11-13-54		
2	Ice Protection Removed			
1	Ice Protection	1-19-54		

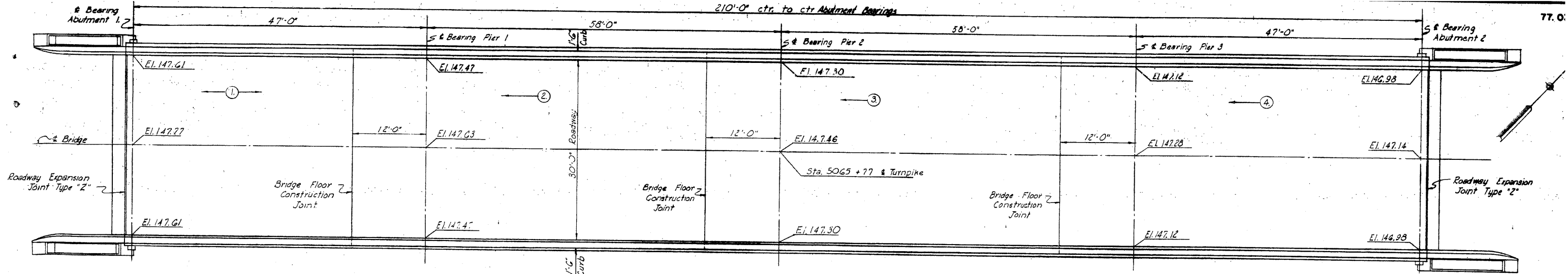
All piles shall be 10BP42.  
Batter front row 3" in  
12" as shown.

MAINE TURNPIKE AUTHORITY  
SECTION 2— PORTLAND TO AUGUSTA  
STRUCTURE NO. 77 TURNPIKE OVER  
COBBOSECONTEE RIVER  
STA. 5065 + 77.00  
SUBSTRUCTURE

HOWARD, NEEDLES, TAMMEN & BERGENDOFF  
CONSULTING ENGINEERS  
NEW YORK KANSAS CITY

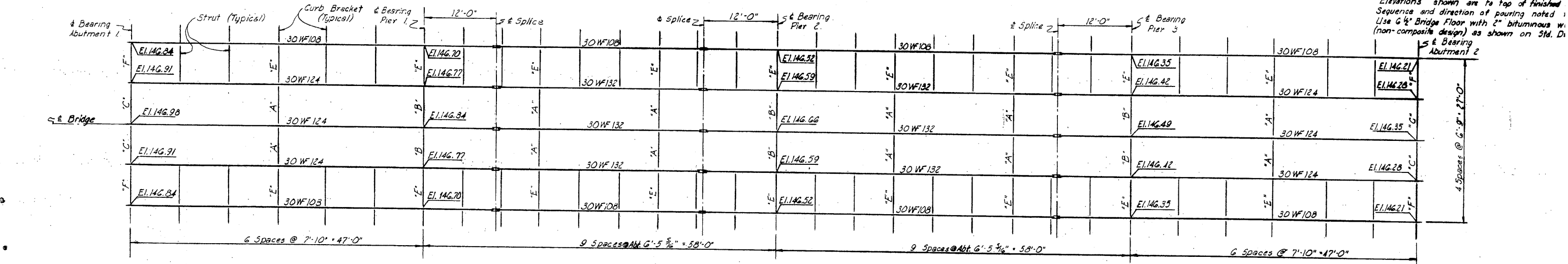
SCALE: 1/4" = 1'-0"  
CONTRACT NO. \_\_\_\_\_  
SHEET NO. 340

210'-0" ctr. to ctr. Abutment Bearings



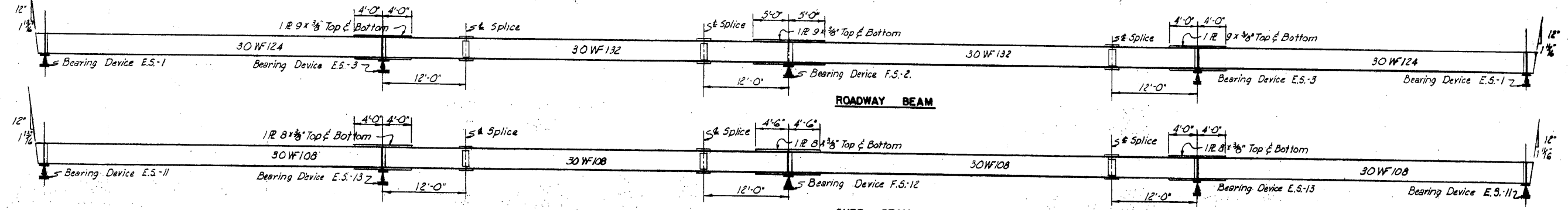
PLAN

Elevations shown are to top of finished Sequence and direction of pouring noted. Use 6" Bridge Floor with 2" bituminous w. (non-composite design) as shown on Std. D.



FRAMING PLAN

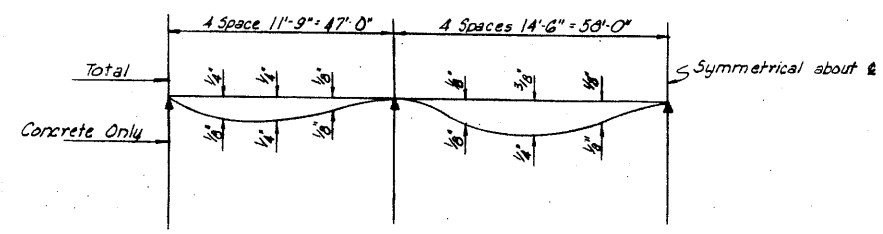
Elevations shown are to top flange of Diaphragms are noted thus "A" "B" "C" "E"



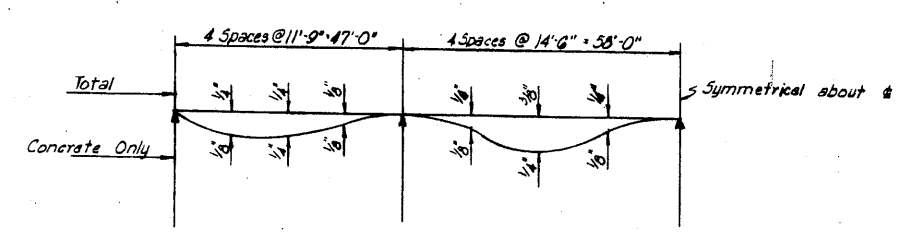
ROADWAY BEAM

CURB BEAM

All bearing stiffeners at points of support shall be 7x4x3/8 angles. Bevel shown at end of beams is true with respect to axis of beams only.



ROADWAY BEAM



CURB BEAM

BEAM DEFLECTION DIAGRAMS  
No Scale

DRAWING 77.03.03

BY	DATE			
MADE	B.K.	1-13-54		
TRACED				
CHECKED	F.S.J.R.	1-19-54	As-Built	HBN/25-54
IN CHARGE OF	IDSX			
NO.	REVISION	BY	DATE	

MAINE TURNPIKE AUTHORITY  
**MAINE TURNPIKE**  
 SECTION 2- PORTLAND TO AI  
 STRUCTURE NO. 77 TURNPIKE  
 COBOSSECONTEE RIVER  
 STA. 8065 + 77  
 SUPERSTRUCTURE  
 HOWARD, NEEDLES, TAMMEN & BERGENDOFF  
 CONSULTING ENGINEERS  
 NEW YORK KANSAS CITY  
 SCALE: 1/8"  
 CONTRACT 1  
 SHEET NO. 2