

ADDENDUM 2_April 18, 2024

FROM: Allied Engineering, Inc.
160 Veranda Street
Portland, Maine 04103
Telephone: (207) 221-2260

TO: Prospective Bidders, Suppliers, and Other Parties

RE: Addendum No. **Two (2)** to the Bidding Documents for:
York Maintenance Facility Vehicle Storage Garage, Mile 6.8, York, ME

This Addendum forms a part of the Contract Documents and modifies the original Bidding Documents dated March 25, 2024. Acknowledge receipt of this Addendum in the space provided on the Proposal Form. Failure to do so may subject Bidder to disqualification.

GENERAL - None

QUESTIONS

1. **Drawing A-6:** The Finish Schedule on drawing A-6 calls for Metal Liner Panel on the North & South walls. It appears the building sections are showing just the interior face of the exterior insulated panel as the finish on all walls.

AEI Response: All walls have insulated metal wall panels. Change the Finish Schedule on Sheet A-6 as attached.

2. **Specification Section 081113:** Specification section calls for Knock Down frames. Are you sure this is what is desired?

AEI Response: Specification Section 081113 is correct.

3. **Specification Section 133413:** Don't see any mention of the structural steel framing members getting field painted. They are shop primed per spec.

AEI Response: PEMB structure shall be touch up primed to match existing color and type at all areas that may be scratched, chipped, or damage during shipping, erection, and completion of adjacent work. If original primer cannot be matched, the entire PEMB structure shall be re-primed with a color as selected by the Architect.

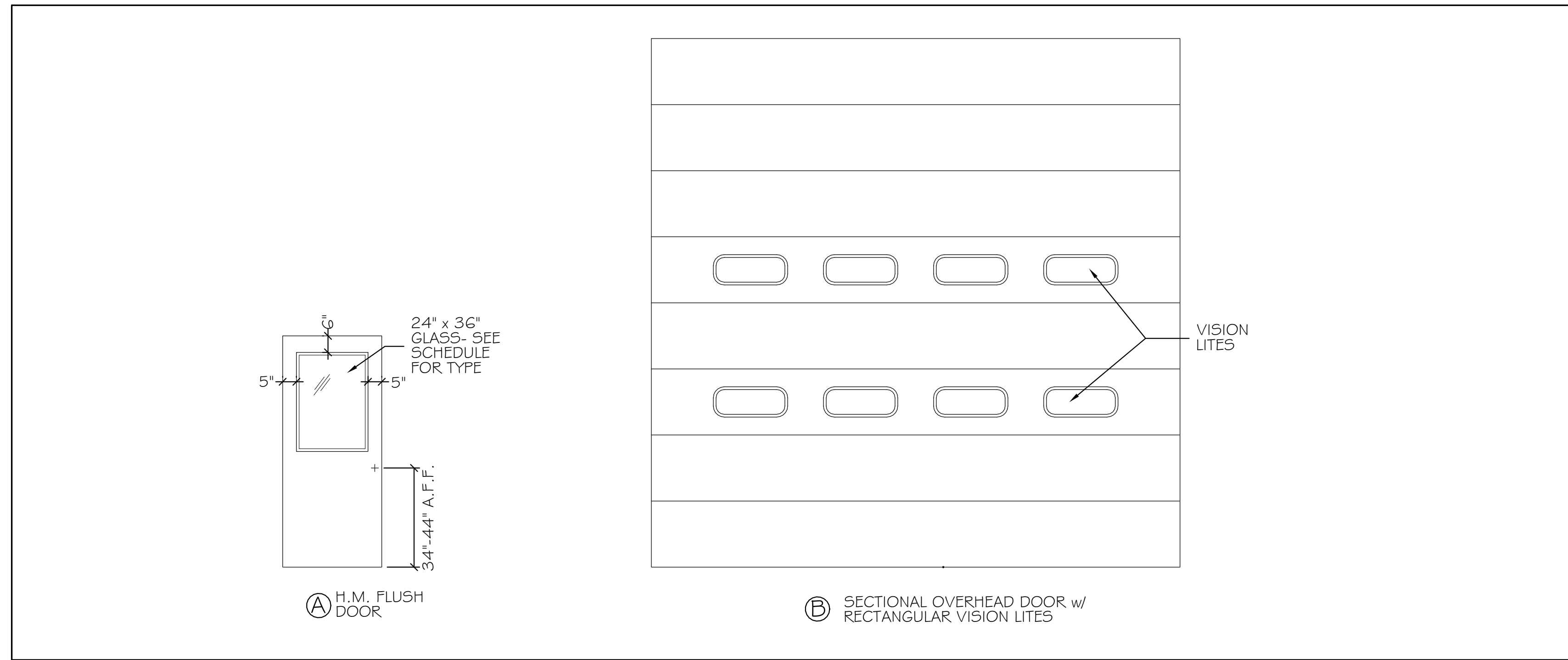
SPECIFICATIONS - None

PLANS SHEETS & SKETCHES

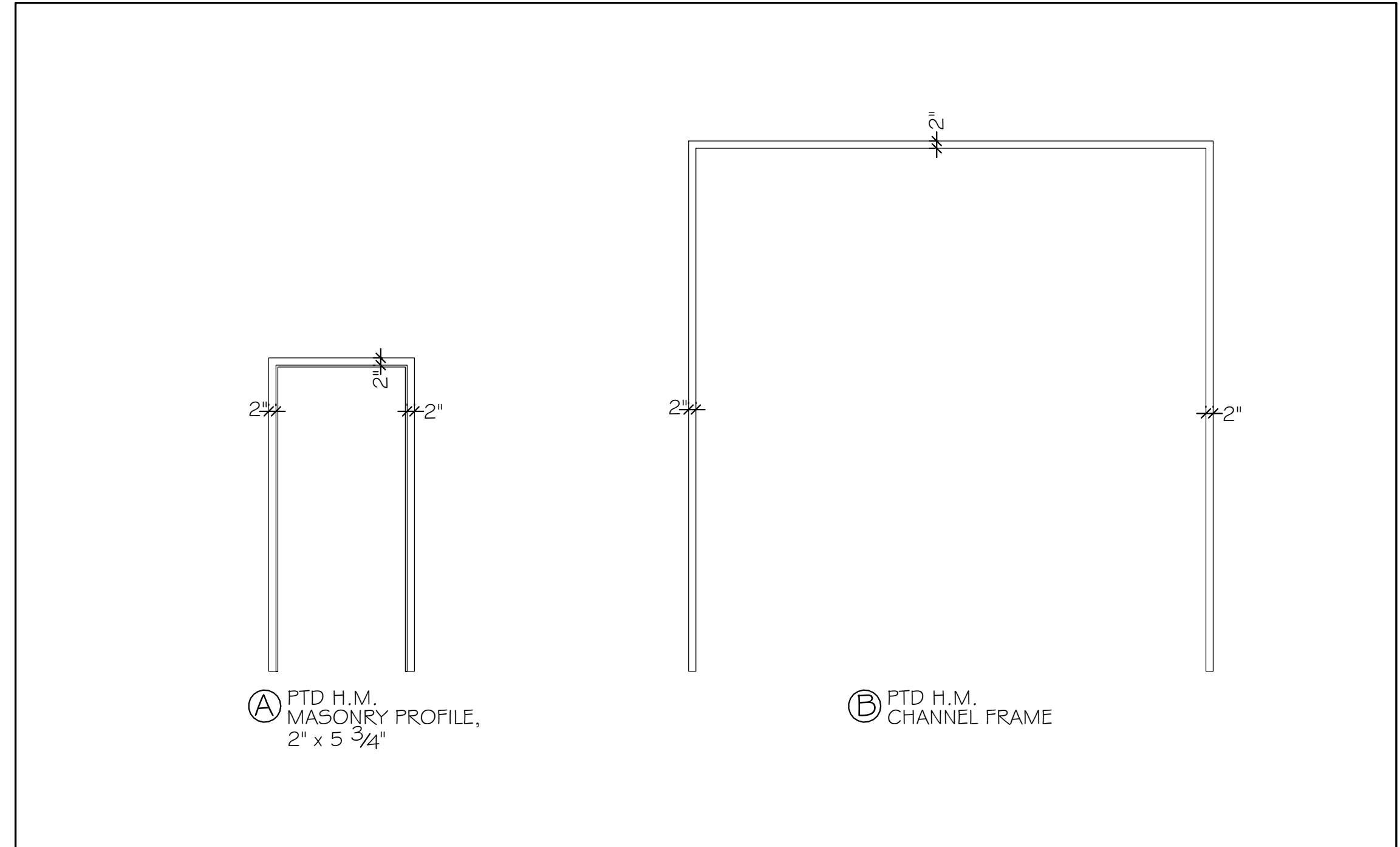
1. **DELETE** Sheet 7 of 32 - Details 1 Plan in its entirety. **ADD** in its place, Sheet 7 of 32 – Details 1 Plan, attached, reissued with revisions.

ATTACHMENTS

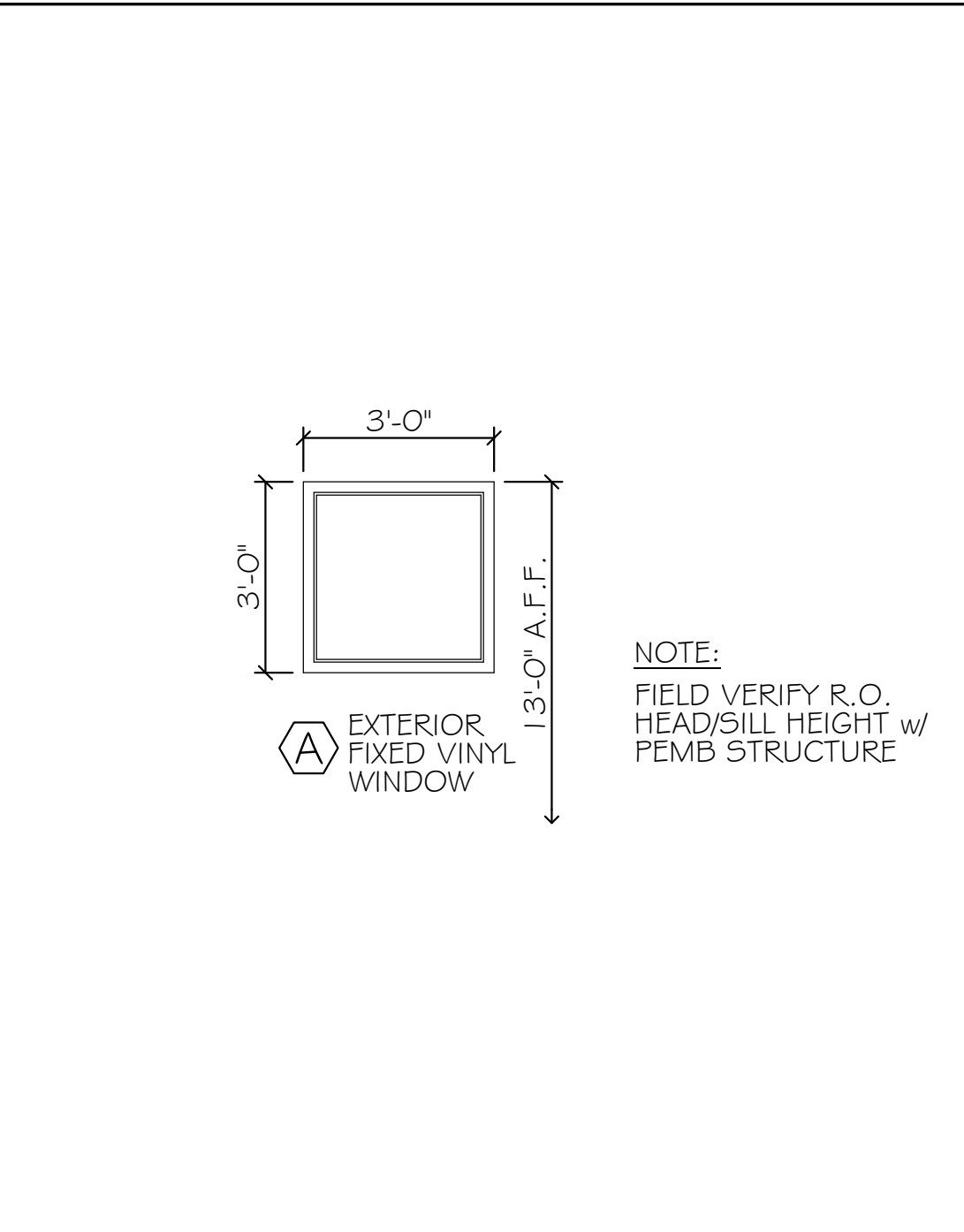
- | | |
|--------------------------------|-----------------------|
| A. Addendum 1 Summary Document | (1 Pages) |
| B. Plan Sheets and Sketches | (1 Pages) |
| Total Page Count | <u>2 Pages</u> |



DOOR TYPES 3/8" = 1'-0"



FRAME TYPES 3/8" = 1'-0"



WINDOW TYPE 3/8" = 1'-0"

DOOR SCHEDULE

ABBREVIATIONS

ALUM	AL	ALUMINUM	MAS	MASONRY
DW		DRYWALL	MFGR	MANUFACTURER
ES		EDGE STRIP	OCD	OVERHEAD COILING DOOR
EMHO		ELECTRO MAGNETIC HOLD OPENER	OHD	OVERHEAD DOOR
GL		GLASS	T	TEMPERED
HM		HOLLOW METAL	T-BREAK	THERMAL BREAK
INSUL		INSULATED	TH	THERMAL INSULATED
			TS	TRANSITION STRIP

NO.	TYPE	SIZE (w x h)	THK	INSUL	HDWE	FR	GLASS		REMARKS	FRAMES			THRESHOLDS				
							TYPE	SIZE		TYPE	FR	PROFILE	DETAILS HEAD	DETAILS JAMB	MATERIAL	DETAILS SILL	FIN
101	B	16x16' OHD	MFGR	YES	MFGR	---	MFGR	MFGR		B	---	MAS	5-A7	6-A7	---	---	7-A7
102	B	16x16' OHD	MFGR	YES	MFGR	---	MFGR	MFGR		B	---	MAS	5-A7	6-A7	---	---	7-A7
103	B	16x16' OHD	MFGR	YES	MFGR	---	MFGR	MFGR		B	---	MAS	5-A7	6-A7	---	---	7-A7
104	B	16x16' OHD	MFGR	YES	MFGR	---	MFGR	MFGR		B	---	MAS	5-A7	6-A7	---	---	7-A7
105	B	16x16' OHD	MFGR	YES	MFGR	---	MFGR	MFGR		B	---	MAS	5-A7	6-A7	---	---	7-A7
106	B	16x16' OHD	MFGR	YES	MFGR	---	MFGR	MFGR		B	---	MAS	5-A7	6-A7	---	---	7-A7
107	A	3' x 7'	1 3/4"	YES	HW-2	---	T / TH	24" x 36"		A	---	MAS	9-A7	10-A7	ALUM	11-A7	---
108	A	3' x 7'	1 3/4"	YES	HW-2	---	T / TH	24" x 36"		A	---	MAS	9-A7	10-A7	ALUM	11-A7	---
109	A	3' x 7'	1 3/4"	YES	HW-1	---	T / TH	24" x 36"		A	---	MAS	9-A7	10-A7	ALUM	11-A7	---

WINDOW SCHEDULE

ABBREVIATION MFGR MANUFACTURER

NO.	TYPE	MANUFACTURER		NOMINAL SIZE		DETAILS					REMARKS	
		MFGR	MODEL	WIDTH	HEIGHT	HEAD	JAMB	SILL	MUNT	MULL		
A	FIXED	VINYL	MFGR	3'-0"	3'-0"	13-A7	14-A7	15-A7	---	---	---	LOW 'E' INSULATED GLASS

FINISH SCHEDULE

ABBREVIATIONS

CH	CONCRETE w/ HARDENER	MLP	METAL LINER PANEL
CMU	CONCRETE MASONRY UNIT	P	PAINT
DFP	DRY FALL PAINT	RB	RUBBER BASE
E	EXISTING	RT	RUBBER TILE
EP	EPOXY PAINT		
FRP	FIBERGLASS REINFORCED PANELS	SAT	SUSPENDED ACOUSTICAL TILE
FV	FIELD VERIFY	SS	STAINLESS STEEL
GL	GLASS	WD	WOOD
GWB	GYP'SUM WALL BOARD		

RM NO.	NAME	WALLS				FLOORS				CEILING A		CEILING B		REMARKS
		N	E	S	W	MAT'L	BASE	MAT'L	BASE	TYPE	HT.	TYPE	HT.	
101	BAY 1	P / IMP	P / IMP	P / IMP	P / IMP	CONC	---	---	---	MLP	STRUCT.	---	---	
102	BAY 2	P / IMP	P / IMP	P / IMP	P / IMP	CONC	---	---	---	MLP	STRUCT.	---	---	
103	BAY 3	P / IMP	P / IMP	P / IMP	P / IMP	CONC	---	---	---	MLP	STRUCT.	---	---	
104	BAY 4	P / IMP	P / IMP	P / IMP	P / IMP	CONC	---	---	---	MLP	STRUCT.	---	---	
105	BAY 5	P / IMP	P / IMP	P / IMP	P / IMP	CONC	---	---	---	MLP	STRUCT.	---	---	
106	BAY 6	P / IMP	P / IMP	P / IMP	P / IMP	CONC	---	---	---	MLP	STRUCT.	---	---	

Scale: 3/8" = 1'-0"

No.	Revision	By	Date
2	ADDENDUM - 2	MFH	04/18/24

Designed by: MICHAEL F. HAYS, RA
 ISSUED FOR BID - NOT FOR CONSTRUCTION

By	Date	By	Date
Designed: MFH	03/25/24	Checked: MFH	03/25/24
Drawn: MGK	03/25/24		

MTA PROJECT MANAGER: Brian A. Taddeo, P.E.

CONTRACT 2024.09
 YORK VEHICLE STORAGE GARAGE
 DOOR, WINDOW & FINISH SCHEDULES

SHEET NUMBER: A-6

CONTRACT: 2024.09 17 OF 32