

MAINE TURNPIKE AUTHORITY

ADDENDUM NO. 2

CONTRACT 2022.07

INTERCHANGE IMPROVEMENTS

SACO (EXITS 35 & 36)

MM 34.7 TO MM 36.6

The bid opening date is Tuesday November 15, 2022 at 11:00 am.

The following changes are made to the Proposal, Specifications, and Plans.

GENERAL

All questions regarding Contract 2022.07 shall be submitted by November 4, 2022 at 12:00 pm. Questions received after that time may not be answered.

PROPOSAL

- Proposal Sheets P-10 to P-35 are deleted and replaced with sheets P-10 to P-35, included in this addendum. The revision to this proposal sheet reduces the quantity of item 603.28 Concrete Collar and adds item 603.2801 – Reinforced Concrete Collar.

SPECIAL PROVISIONS

- Page SP-80, Section 424 ASPHALT RUBBER MASTIC CRACK SEALER, Section 424.05: The first paragraph is deleted in its entirety and replaced with the following:

All cracks $\frac{3}{4}$ of an inch in width and depth shall be blown free and raked off of loose material, dirt, vegetation, and other debris by high pressure air. Material removed from the crack shall be removed from the pavement surface by means of a power sweeper or appropriate hand tools as required. Cracks showing evidence of vegetation after being blown out shall be additionally cleaned by appropriate hand tools and additionally blown out. All cracks must be blown and heated via the hot air lance 10 minutes prior to the crack being sealed. Distance between the hot air lance and the crack sealing unit should be no more than 50 ft to eliminate reinvasion of water, debris, and other incompressibles. All debris, vegetation, and water shall be removed to enhance adhesion of the crack sealing material. This work shall not be done in inclement weather.
- Page SP-110, Section 508 WATERPROOFING MEMBRANE, Section 508.02: The second paragraph is deleted in its entirety and replaced with the following:

High Performance Membrane shall be Sopralene Flam Antirock heat-applied membrane manufactured by Soprema USA.

- Page SP-161A, Section 603 PIPE CULVERTS AND STORM DRAINS (Reinforced Concrete Collar) has been added and is included in this addendum.
- Page SP-203A, Section 618 SEEDING has been added and is included in this addendum.
- Page SP-204, Section 618 SEEDING (Special Seeding), Section 618.10: The second paragraph is amended by adding the following at the end of the paragraph:

Areas that have not received final acceptance prior to September 15th will not be accepted until the spring following any necessary reseeding.
- Page SP-317, Section 645 HIGHWAY SIGNING, Section 645.02: The second paragraph is deleted in its entirety and replaced with the following:

Daktronics model VS6-60x225-15.85-RGB, or approved equal. The Sign shall also include a DM-100 hand controller or approved equal.

PLANS

- Plan Sheet 2 of 735, ESTIMATED QUANTITIES 1, has been deleted in its entirety and replaced with Plan Sheet 2 of 735, included in this addendum.
- Plan Sheets 254, 255, 256, & 262 of 735, POWER AND COMMUNICATION PLAN 8, 9, 10, 16, have been deleted in their entirety and replaced with Plan Sheets 254, 255, 256, & 262 of 735, included in this addendum.
- Plans Sheet 470 of 735, SB C-D ROADWAY, has been deleted in its entirety and replaced with Plan Sheet 470 of 735, included in this addendum.
- Plan Sheets 601, 603, & 608 of 735 GOOSEFARE BROOK CULVERT EXTENSION, have been deleted in their entirety and replaced with Plan Sheets 601, 603, & 608 of 735, included in this addendum.

QUESTIONS

The following are questions asked at the pre-bid meeting held on October 25, 2022 or submitted to the Maine Turnpike Authority in writing. Answers to the questions are noted. Bidders shall utilize this information in preparing their bid.

1. Question: Can Tuf-Bar by Tuf-Bar Inc. be added as an approved manufacturer for GRFP?
Tuf-Bar is approved by MaineDOT (MaineDOT ID# 21-051 Tuf-Bar)

Answer: Tuf-Bar by Tuf-Bar, Inc. is an acceptable product for the GRFP reinforcement.

2. Question: The Daktronics Canopy Mounted Sign model called out is no longer available. Is there a new model number to use?

Answer: The model number has been changed to VS6-60x225-15.85-RGB as noted in Addendum No. 2, Section 645.

3. Question: Can the metal lockers (Building SP 105113) be replaced with Scranton Duralife Lockers

Answer: No, the Authority would prefer to use the metal lockers as specified.

4. Question: Power & Comm Plan 6 (sheet 252) Are there any 4'x6' splice boxes required for communication? Typically, comm wants the same splice boxes that the primary has.

Answer: Communications splice boxes will be the 18x11 quazite junction boxes as noted on the plans.

5. Question: Power & Comm Plan 6 (Sheet 252) The 4x6 splice box with hatch is different the frame & cover in the specs. Please specify which you want.

Answer: The 4x6 splice boxes noted on the plans shall comply with SP 626 (SP-219) and CMP Utility Standards. Details are not provided in the plans.

6. Question: Power & Comm Plan 6 (Sheet 252) Pad mounted transformers are very long lead time currently. You may want to get account numbers set up with CMP so they can get them ordered.

Answer: Accounts have already been set up with CMP and materials have been requested to account for the anticipated long lead times.

7. Question: Power & Communication Drawing Plan 6 (Sheet 252), is the Comm heading to the traffic signal (2) 3" conduits? Once for 120-volt toll power and the other for communication?

Answer: Yes one conduit for power and one for communications.

8. Question: Power & Communication drawing Plan 8 (Sheet 254) shows (3) 3" comm with (1) 3" spare. Sheet 7 shows (3) 3" only at station 211. Station 1710+80 shows (3) 3" comm & (1) 3" spare. Please make corrections as necessary.

Answer: A spare conduit shall be installed at road crossings as called out. A 4th conduit is noted at the SB Plaza (Sta. 215+50, LT) and this note has been revised to delete 4th conduit on Sheet 254 in Addendum No. 2.

9. Question: Power & Comm Plan 8 (Sheet 254) Station 1715+00 bottom of the page shows (1) 3" with 3 #6 and 1 #6G, however you show 4 circuits. Please clarify.

Answer: This note on Sheet 254 has been revised to show 4#6, 1#6G in Addendum No. 2.

10. Question: Power & Comm Plan 9 (Sheet 255) Station 219+50. Is the #4 wire mislabeled crossing the ramp headed southeast? Its #6 wire on both sides of that circuit, but #4 crossing the Ramp.

Answer: Yes, the wire size has been changed from #4 AWG to #6 AWG on Sheet 255 in Addendum No. 2.

11. Question: Power & Comm Plan 9 (Sheet 255) Is the area where the primary conduit no longer follows the road accessible? Normally CMP would require the primary follow the road in case there are ever issues in the future for repairs.

Answer: Yes, this area is accessible. CMP has reviewed the location.

12. Question: Power & Comm Plan 10 (Sheet 256) shows (2) 3” Tolling Comm, (2) 3” Tolling Power and (1) 3” site lighting. Those same quantity of conduits don’t seem to carry through the intersection on Plan 9 (Sheet 255) station 219 to 220+50. The notes for the 2 #1 & 1 #1G don’t seem to carry to the exit toll or back to a power source.

Answer: Tolling Comm and Power quantities and sizes stay the same. See Toll System Drawings for Gantry Power conductor sizes. Notes have been added to Sheet 255 in Addendum No. 2. Traffic signal controller no longer crosses street and the (1) 3”C for Signal Power with 2#1,1#1G at street crossing has been eliminated on Sheet 256 in Addendum No. 2.

13. Question: Power & Comm Plan 11 (Sheet 257) Station 1729+50 to 1732+50 shows 3 #4 & 1 #4G. Assuming we are carrying a neutral in this run?

Answer: Yes, LD is a 240/480V single phase service.

14. Power & Comm Plan 15 (Sheet 261) At the bottom right of the page it shows in existing 3” conduit provide 6 #2 & 1 #2G. Are we missing drawings for this?

Answer: See note on Power and Communication Plan 13, 15, and 16 referring to conduit system installed under contract 2022.02.

15. Power & Comm Plan 16 (Sheet 262) Directional Drill across highway has 6 #2 and 1 #2G. Conduit station 2753 +75 to 2755+25 and the second directional bore has 8 #2 and 1 #2G. From there it takes off with #6’s. Please confirm this is correct.

Answer: Yes, feed from panel is #2 AWG and then changes to #6 AWG at handholes shown on plan. The number of wires have been changed from 8 wires to 6 on Sheet 262 in Addendum No. 2.

16. Power & Comm Plan 16 (Sheet 262) 955+25 – From junction box to pole not labeled with wire size or quantity.

Answer: See Note 21 on Power and Communication Notes, Schedules, and Details.

17. Can we get a door and frame type with hardware set required for the exterior door in the utility building?

Answer: See SP-433 for Door information in the utility building.

18. SP-80 424.05 “All cracks $\frac{3}{4}$ of an inch shall be.....” seems like a type, is it $\frac{3}{4}$ ” wide, or deep? Maybe a line was mistakenly omitted.

Answer: This has been revised to say "All cracks shall be 3/4" wide and deep..." in Addendum No. 2, Section 424.

19. Please confirm the waterproofing membrane type. There are two similarly named products.

Answer: The waterproofing material has been clarified to note High Performance Membrane shall be Sopralene Flam Antirock heat-applied membrane manufactured by Soprema USA in Addendum No. 2, Section 508.

20. On sheet 608 of the contract plans, the Goosefare Brook concrete collar is called out as item 603.28. There are 11 other collars that have significantly less scope. Will the MTA consider making the Goose Fare Brook Collar its own item.

Answer: Yes. Item 603.2801 - Reinforced Concrete Collar has been added for the Goosefare Brook culvert in the plans and special provisions in Addendum No. 2.

ATTACHMENTS

- Proposal Sheets (26 Pages)
- Special Provisions (2 Pages)
- Plans (9 Pages)

Item No	Item Description	Units	Approx. Quantities	Unit Prices in Numbers		Bid Amount in Numbers	
				Dollars	Cents	Dollars	Cents
BROUGHT FORWARD:							
603.2053	30 INCH REINFORCED CONCRETE PIPE - CLASS V	Linear Foot	52				
603.215	36 INCH REINFORCED CONCRETE PIPE - CLASS III	Linear Foot	170				
603.2153	36 INCH REINFORCED CONCRETE PIPE - CLASS V	Linear Foot	150				
603.235	48 INCH REINFORCED CONCRETE PIPE - CLASS III	Linear Foot	34				
603.245	54 INCH REINFORCED CONCRETE PIPE - CLASS III	Linear Foot	44				
603.28	CONCRETE COLLAR	Each	11				
603.2801	REINFORCED CONCRETE COLLAR	Each	1				
603.285	84 INCH REINFORCED CONCRETE PIPE - CLASS III	Linear Foot	26				
604.073	CATCH BASIN TYPE A1	Each	3				
604.09	CATCH BASIN TYPE B1	Each	5				
604.092	CATCH BASIN TYPE B1-C	Each	22				
604.096	60" CATCH BASIN TYPE B1-C	Each	2				

CARRIED FORWARD:

Item No	Item Description	Units	Approx. Quantities	Unit Prices in Numbers		Bid Amount in Numbers	
				Dollars	Cents	Dollars	Cents
BROUGHT FORWARD:							
604.15	MANHOLE	Each	2				
604.16	ALTERING CATCH BASIN TO MANHOLE	Each	1				
604.18	ADJUSTING MANHOLE OR CATCH BASIN TO GRADE	Each	7				
604.182	CLEANING EXISTING CATCH BASIN AND MANHOLE	Each	30				
604.246	CATCH BASIN TYPE F5	Each	12				
604.248	CATCH BASIN TYPE F6	Each	22				
604.249	CATCH BASIN TYPE F6-C	Each	2				
604.25	CATCH BASIN TYPE A5	Each	1				
604.26	CATCH BASIN TYPE B5	Each	28				
604.262	CATCH BASIN TYPE B5-C	Each	4				
604.263	60" CATCH BASIN TYPE B5	Each	2				
604.40	SECURE CATCH BASIN GRATE	Each	11				

CARRIED FORWARD:

Item No	Item Description	Units	Approx. Quantities	Unit Prices in Numbers		Bid Amount in Numbers	
				Dollars	Cents	Dollars	Cents
BROUGHT FORWARD:							
605.016	6" PVC UNDERDRAIN	Linear Foot	2,600				
605.018	8" PVC UNDERDRAIN	Linear Foot	820				
605.09	6 INCH UNDERDRAIN TYPE B	Linear Foot	2,180				
605.11	12 INCH UNDERDRAIN TYPE C	Linear Foot	3,739				
605.12	15 INCH UNDERDRAIN TYPE C	Linear Foot	1,870				
605.13	18 INCH UNDERDRAIN TYPE C	Linear Foot	1,250				
605.15	24 INCH UNDERDRAIN TYPE C	Linear Foot	406				
606.1301	31" W-BEAM GUARDRAIL - MID-WAY SPLICE (7' STEEL POSTS, 8" OFFSET BLOCKS, SINGLE FACED)	Linear Foot	6,900				
606.1303	31" W-BEAM GUARDRAIL - MID-WAY SPLICE - 15' RADIUS & LESS	Linear Foot	38				
606.1304	31" W-BEAM GUARDRAIL - MID-WAY SPLICE - OVER 15' RADIUS	Linear Foot	150				
606.1307	31" W-BEAM GUARDRAIL - MID-WAY SPLICE FLARED TERMINAL	Each	17				
606.132	31" W-BEAM GUARDRAIL - MID-WAY SPLICE (7' STEEL POSTS, 8" OFFSET BLOCKS, DOUBLE FACED)	Linear Foot	3,700				

CARRIED FORWARD:

Item No	Item Description	Units	Approx. Quantities	Unit Prices in Numbers		Bid Amount in Numbers	
				Dollars	Cents	Dollars	Cents
BROUGHT FORWARD:							
606.1351	31" W-BEAM GUARDRAIL - MID-WAY SPLICE TERMINAL END - ANCHORED END	Each	15				
606.1352	31" W-BEAM GUARDRAIL - MID-WAY SPLICE TERMINAL END - ANCHORED END, DOUBLE FACED	Each	1				
606.1723	BRIDGE TRANSITION - TYPE III	Each	6				
606.265	TERMINAL END - SINGLE RAIL - GALVANIZED STEEL	Each	6				
606.279	TERMINAL END - ANCHORED END, THRIE BEAM	Each	2				
606.352	REFLECTORIZED BEAM GUARDRAIL DELINEATOR	Each	190				
606.353	REFLECTORIZED FLEXIBLE GUARDRAIL MARKER	Each	50				
606.356	UNDERDRAIN DELINEATOR POST	Each	105				
606.3561	DELINEATOR POST - REMOVE AND RESET	Each	293				
606.36	GUARDRAIL - REMOVE AND RESET	Linear Foot	50				
606.47	SINGLE WOOD POST	Each	6				
606.51	MULTIPLE MAILBOX SUPPORT	Each	1				

CARRIED FORWARD:

Item No	Item Description	Units	Approx. Quantities	Unit Prices in Numbers		Bid Amount in Numbers	
				Dollars	Cents	Dollars	Cents
BROUGHT FORWARD:							
606.64	GUARDRAIL THRIE BEAM - DOUBLE RAIL	Linear Foot	430				
606.65	GUARDRAIL THRIE BEAM - SINGLE RAIL	Linear Foot	88				
606.701	ASYMMETRICAL THRIE BEAM TRANSITION	Each	3				
606.83	GUARDRAIL - REMOVE AND RESET EXISITNG CRASH END	Each	1				
607.09	WOVEN WIRE FENCE - METAL POSTS	Linear Foot	2,100				
607.32	BRACING ASSEMBLY TYPE 1 - METAL POSTS	Each	2				
607.33	BRACING ASSEMBLY TYPE II - METAL POSTS	Each	25				
607.45	STOCKADE FENCE - 6' TALL	Linear Foot	140				
608.08	REINFORCED CONCRETE SIDEWALK	Square Yard	210				
608.26	CURB RAMP DETECTABLE WARNING FIELD	Square Foot	240				
609.11	VERTICAL CURB TYPE 1	Linear Foot	390				
609.12	VERTICAL CURB TYPE 1 - CIRCULAR	Linear Foot	130				

CARRIED FORWARD:

Item No	Item Description	Units	Approx. Quantities	Unit Prices in Numbers		Bid Amount in Numbers	
				Dollars	Cents	Dollars	Cents
BROUGHT FORWARD:							
609.13	VERTICAL BRIDGE CURB TYPE 1	Linear Foot	520				
609.14	VERTICAL BRIDGE CURB TYPE 1 - CIRCULAR	Linear Foot	180				
609.15	SLOPED CURB TYPE 1	Linear Foot	16				
609.21	CONCRETE SLIPFORM CURB	Linear Foot	2,690				
609.219	CONCRETE SLIPFORM CURB - TERMINAL END	Linear Foot	256				
609.221	TERMINAL CURB TYPE 1	Linear Foot	95				
609.222	TERMINAL CURB TYPE 1 - CIRCULAR	Linear Foot	12				
609.26	CURB TRANSITION SECTION B TYPE 1	Each	2				
609.34	CURB TYPE 5	Linear Foot	1,450				
609.35	CURB TYPE 5 - CIRCULAR	Linear Foot	53				
610.08	PLAIN RIPRAP	Cubic Yard	816				
610.18	STONE DITCH PROTECTION	Cubic Yard	72				

CARRIED FORWARD:

Item No	Item Description	Units	Approx. Quantities	Unit Prices in Numbers		Bid Amount in Numbers	
				Dollars	Cents	Dollars	Cents
BROUGHT FORWARD:							
610.181	TEMPORARY STONE CHECK DAM	Cubic Yard	510				
610.213	VOID-FILLED RIPRAP - TYPE A OR B	Cubic Yard	120				
613.319	EROSION CONTROL BLANKET	Square Yard	37,000				
615.07	LOAM	Cubic Yard	5,720				
618.13	SEEDING METHOD NUMBER 1	Unit	77				
618.14	SEEDING METHOD NUMBER 2	Unit	779				
618.143	SPECIAL SEEDING	Unit	3				
618.15	TEMPORARY SEEDING	Pound	9				
619.1201	MULCH - PLAN QUANTITY	Unit	859				
619.1202	TEMPORARY MULCH	Lump Sum	1				
619.1401	EROSION CONTROL MIX	Cubic Yard	100				
620.56	DRAINAGE GEOTEXTILE	Square Yard	10,900				

CARRIED FORWARD:

Item No	Item Description	Units	Approx. Quantities	Unit Prices in Numbers		Bid Amount in Numbers	
				Dollars	Cents	Dollars	Cents
BROUGHT FORWARD:							
620.561	IMPERVIOUS LINER	Square Yard	5,200				
620.58	EROSION CONTROL GEOTEXTILE	Square Yard	3,645				
621.046	EVERGREEN TREE (8 - 10 FEET) GROUP A	Each	13				
621.264	MULTI-STEM DECIDUOUS TREE GROUP A	Each	2				
621.273	LARGE DECIDUOUS TREE (2" - 2.5" CALIPER) GROUP A	Each	15				
621.389	EVERGREENS (15" - 18") GROUP A	Each	6				
621.401	EVERGREENS (2 - 2.5 FEET) GROUP A	Each	4				
621.513	HYBRID RHODODENDRON (2.5 - 3 FEET)	Each	5				
621.552	DECIDUOUS SHRUBS (3 - 4 FEET) GROUP A	Each	60				
625.106	WATER SERVICE SUPPLY LINE (<3 IN)	Linear Foot	750				
625.107	WATER METER PIT	Each	2				
626.121	QUAZITE JUNCTION BOX (36X24)	Each	15				

CARRIED FORWARD:

Item No	Item Description	Units	Approx. Quantities	Unit Prices in Numbers		Bid Amount in Numbers	
				Dollars	Cents	Dollars	Cents
BROUGHT FORWARD:							
626.122	QUAZITE JUNCTION BOX (18X11)	Each	143				
626.123	QUAZITE JUNCTION BOX (48X36)	Each	4				
626.13	4' X 6' SPLICE BOX WITH ACCESS DOOR	Each	5				
626.22	NON-METALLIC CONDUIT	Linear Foot	38,000				
626.223	HORIZONTAL DIRECTIONAL DRILLED CONDUIT	Linear Foot	1,900				
626.31	18 INCH DIAMETER FOUNDATION	Each	15				
626.32	24 INCH DIAMETER FOUNDATION	Each	127				
626.33	30 INCH DIAMETER, LESS THAN 8 FEET OR LESS FOUNDATION	Each	4				
626.332	30-INCH DIAMETER, GREATER THAN 8-FEET LONG, ALL 36 INCH AND 42 INCH DIAMETER FOUNDATIONS	Cubic Yard	113				
626.333	48-INCH DIAMETER, 54-INCH DIAMETER, 60-INCH DIAMETER FOUNDATIONS	Cubic Yard	25				
626.35	CONTROLLER CABINET FOUNDATION	Each	4				
626.36	REMOVE OR MODIFY CONCRETE FOUNDATION	Each	39				

CARRIED FORWARD:

Item No	Item Description	Units	Approx. Quantities	Unit Prices in Numbers		Bid Amount in Numbers	
				Dollars	Cents	Dollars	Cents
BROUGHT FORWARD:							
626.38	GROUND MOUNTED CABINET FOUNDATION	Each	1				
627.18	12" SOLID WHITE PAVEMENT MARKING LINE	Linear Foot	7,500				
627.712	WHITE OR YELLOW PAVEMENT MARKING LINE	Linear Foot	120,650				
627.73	TEMPORARY 6 INCH PAVEMENT MARKING TAPE	Linear Foot	67,200				
627.731	TEMPORARY 6 INCH BLACK PAVEMENT MARKING TAPE	Linear Foot	1,400				
627.733	4" WHITE OR YELLOW PAINTED PAVEMENT MARKING LINE	Linear Foot	460				
627.75	WHITE OR YELLOW PAVEMENT & CURB MARKING	Square Foot	3,100				
627.77	REMOVING EXISTING PAVEMENT MARKING	Square Foot	20,400				
627.78	TEMPORARY PAVEMENT MARKING LINE, WHITE OR YELLOW	Linear Foot	197,000				
627.812	TEMPORARY RAISED PAVEMENT MARKERS	Each	7,050				
627.941	PAVEMENT MARKING TAPE – DOTTED WHITE LANE LINE, 6-INCH WIDTH	Linear Foot	670				
627.942	PAVEMENT MARKING TAPE – DOTTED WHITE LANE LINE, 12-INCH WIDTH	Linear Foot	860				

CARRIED FORWARD:

Item No	Item Description	Units	Approx. Quantities	Unit Prices in Numbers		Bid Amount in Numbers	
				Dollars	Cents	Dollars	Cents
BROUGHT FORWARD:							
627.944	PAVEMENT MARKING - RECESSED TAPE - WORDS, ARROWS, STOP BARS	Square Foot	360				
629.05	HAND LABOR, STRAIGHT TIME	Hour	200				
631.10	AIR COMPRESSOR (INCLUDING OPERATOR)	Hour	70				
631.11	AIR TOOL (INCLUDING OPERATOR)	Hour	70				
631.12	ALL PURPOSE EXCAVATOR (INCLUDING OPERATOR)	Hour	200				
631.13	BULLDOZER (INCLUDING OPERATOR)	Hour	200				
631.14	GRADER (INCLUDING OPERATOR)	Hour	100				
631.171	TRUCK - SMALL (INCLUDING OPERATOR)	Hour	100				
631.172	TRUCK - LARGE (INCLUDING OPERATOR)	Hour	100				
631.18	CHAIN SAW RENTAL (INCLUDING OPERATOR)	Hour	30				
631.21	ROAD BROOM (INCLUDING OPERATORS AND HAULER)	Hour	10				
631.22	FRONT END LOADER (INCLUDING OPERATOR)	Hour	100				

CARRIED FORWARD:

Item No	Item Description	Units	Approx. Quantities	Unit Prices in Numbers		Bid Amount in Numbers	
				Dollars	Cents	Dollars	Cents
BROUGHT FORWARD:							
631.32	CULVERT CLEANER (INCLUDING OPERATOR)	Hour	50				
631.36	FOREMAN	Hour	100				
631.51	BUCKET TRUCK	Hour	60				
631.52	SCISSOR LIFT	Hour	60				
631.53	ELECTRICIAN	Hour	100				
631.54	ELECTRICIAN'S APPRENTICE	Hour	100				
631.55	PLUMBER	Hour	60				
633.031	NATURAL GAS SERVICE - NORTHBOUND	Lump Sum	1				
633.0311	NATURAL GAS SERVICE - HOTEL	Lump Sum	1				
633.032	PROPANE SERVICE - SOUTHBOUND	Lump Sum	1				
633.21	PROPANE TANK SUPPORTS (12' X 4')	Each	2				
633.31	PROPANE TANK PAD	Square Yard	27				

CARRIED FORWARD:

Item No	Item Description	Units	Approx. Quantities	Unit Prices in Numbers		Bid Amount in Numbers	
				Dollars	Cents	Dollars	Cents
BROUGHT FORWARD:							
634.052	REMOVE HIGH MAST LIGHT STANDARD	Each	3				
634.1751	REPLACEMENT LED FIXTURE - SUPPLIED BY THE AUTHORITY	Each	12				
634.2078	HIGH MAST LIGHT STANDARD - SUPPLIED BY THE AUTHORITY	Each	1				
634.208	REMOVE AND RESET LIGHT STANDARD	Each	8				
634.2312	CONVENTIONAL LIGHT STANDARD WITH LED FIXTURE - SUPPLIED BY THE AUTHORITY	Each	80				
636.400	SOIL NAIL WALL DESIGN	Lump Sum	1				
636.401	SOIL NAIL WALL CONSTRUCTION MONITORING - EXISTING BRIDGE	Lump Sum	1				
636.411	SOIL NAIL WALL	Square Foot	3,750				
639.26	INSTRUMENTATION (GEOTECHNICAL)	Lump Sum	1				
643.712	LANE USE SIGNAL	Each	6				
643.713	PREEMPTIVE SYSTEM AT EXIT 35 NB INTERSECTION	Lump Sum	1				
643.714	PREEMPTIVE SYSTEM AT EXIT 35 SB INTERSECTION	Lump Sum	1				

CARRIED FORWARD:

Item No	Item Description	Units	Approx. Quantities	Unit Prices in Numbers		Bid Amount in Numbers	
				Dollars	Cents	Dollars	Cents
BROUGHT FORWARD:							
643.80	TRAFFIC SIGNAL AT ROUTE 112 AND EXIT 35 SB	Lump Sum	1				
643.81	TRAFFIC SIGNAL AT LUND RD AND EXIT 35 NB	Lump Sum	1				
643.82	VEHICLE DETECTION SYSTEM AT LUND RD AND EXIT 35 NB	Lump Sum	1				
643.83	VEHICLE DETECTION SYSTEM AT ROUTE 112 AND EXIT 35 SB	Lump Sum	1				
643.92	PEDESTAL POLE	Each	4				
643.941	DUAL PURPOSE POLE W/15' MAST ARM	Each	2				
643.942	DUAL PURPOSE POLE W/25' MAST ARM	Each	1				
643.943	DUAL PURPOSE POLE W/30' MAST ARM	Each	1				
643.944	DUAL PURPOSE POLE W/35' MAST ARM	Each	2				
643.945	DUAL PURPOSE POLE W/40' MAST ARM	Each	1				
643.946	DUAL PURPOSE POLE W/45' MAST ARM	Each	1				
645.105	REMOVE AND STACK SIGN	Each	1				

CARRIED FORWARD:

Item No	Item Description	Units	Approx. Quantities	Unit Prices in Numbers		Bid Amount in Numbers	
				Dollars	Cents	Dollars	Cents
BROUGHT FORWARD:							
645.109	REMOVE AND RESET SIGN	Each	23				
645.1092	CANOPY MOUNTED DYNAMIC MESSAGE SIGN	Each	2				
645.1099	REMOVE AND DISPOSE SIGN	Each	30				
645.121	OVERHEAD GUIDE SIGN NB 1 (STA. 1670+75)	Lump Sum	1				
645.14	CANOPY MOUNTED SIGN	Each	4				
645.151	CANTILEVER GUIDE SIGN NB 1 (STA. 1718+50)	Lump Sum	1				
645.152	CANTILEVER GUIDE SIGN NB 2 (STA. 1731+30)	Lump Sum	1				
645.153	CANTILEVER GUIDE SIGN SB 1 (STA 2728+75)	Lump Sum	1				
645.154	CANTILEVER GUIDE SIGN SB 2 (STA 2740+50)	Lump Sum	1				
645.155	CANTILEVER GUIDE SIGN SB 3 (STA. 2763+00)	Lump Sum	1				
645.156	CANTILEVER GUIDE SIGN SB 4 (STA. 1789+00)	Lump Sum	1				
645.161	BREAKAWAY DEVICE SINGLE POLE	Each	35				

CARRIED FORWARD:

Item No	Item Description	Units	Approx. Quantities	Unit Prices in Numbers		Bid Amount in Numbers	
				Dollars	Cents	Dollars	Cents
BROUGHT FORWARD:							
645.162	BREAKAWAY DEVICE MULTI POLE	Each	35				
645.251	ROADSIDE GUIDE SIGNS, TYPE I	Square Foot	3,400				
645.2511	SHEET ALUMINUM OVERLAY, TYPE I	Square Foot	3				
645.271	REGULATORY, WARNING, CONFIRMATION AND ROUTE ASSEMBLY SIGN, TYPE I	Square Foot	1,300				
645.289	STEEL H-BEAM POLES	Pound	28,600				
645.501	REMOVE AND RESET MAINLINE SIGN NO. 1	Lump Sum	1				
645.502	REMOVE AND RESET MAINLINE SIGN NO. 2	Lump Sum	1				
645.503	REMOVE AND RESET MAINLINE SIGN NO. 3	Lump Sum	1				
645.504	REMOVE AND RESET MAINLINE SIGN NO. 4	Lump Sum	1				
645.505	REMOVE AND RESET MAINLINE SIGN NO. 5	Lump Sum	1				
645.506	REMOVE AND RESET MAINLINE SIGN NO. 6	Lump Sum	1				
645.507	REMOVE AND RESET MAINLINE SIGN NO. 7	Lump Sum	1				

CARRIED FORWARD:

Item No	Item Description	Units	Approx. Quantities	Unit Prices in Numbers		Bid Amount in Numbers	
				Dollars	Cents	Dollars	Cents
BROUGHT FORWARD:							
645.508	REMOVE AND RESET MAINLINE SIGN NO. 8	Lump Sum	1				
645.509	REMOVE AND RESET MAINLINE SIGN NO. 9	Lump Sum	1				
645.510	REMOVE AND RESET MAINLINE SIGN NO. 10	Lump Sum	1				
645.511	REMOVE AND RESET MAINLINE SIGN NO. 11	Lump Sum	1				
648.00	INSTALL FLAGPOLE	Each	2				
650.1011	VARIABLE MESSAGE SIGN (VMS) SYSTEM: ROUTE 112 EB	Lump Sum	1				
650.1012	VARIABLE MESSAGE SIGN (VMS) SYSTEM: ROUTE 112 WB	Lump Sum	1				
650.2011	VMS GROUND MOUNTED CONTROL CABINET: ROUTE 112 EB	Each	1				
650.2012	VMS GROUND MOUNTED CONTROL CABINET: ROUTE 112 WB	Each	1				
650.9011	VMS SOLAR POWER SYSTEM: ROUTE 112 EB	Lump Sum	1				
650.9012	VMS SOLAR POWER SYSTEM: ROUTE 112 WB	Lump Sum	1				
652.30	FLASHING ARROW	Each	4				

CARRIED FORWARD:							
-------------------------	--	--	--	--	--	--	--

Item No	Item Description	Units	Approx. Quantities	Unit Prices in Numbers		Bid Amount in Numbers	
				Dollars	Cents	Dollars	Cents
BROUGHT FORWARD:							
652.312	TYPE III BARRICADES	Each	18				
652.313	TEMPORARY PEDESTRIAN BARRICADE, ADA COMPLIANT	Linear Foot	2,150				
652.33	DRUM	Each	550				
652.34	CONE	Each	100				
652.35	CONSTRUCTION SIGNS	Square Foot	4,400				
652.361	MAINTENANCE OF TRAFFIC CONTROL DEVICES	Lump Sum	1				
652.38	FLAGGERS	Hour	3,250				
652.381	TRAFFIC OFFICERS	Hour	50				
652.41	PORTABLE-CHANGEABLE MESSAGE SIGN	Each	10				
652.45	TRUCK MOUNTED ATTENUATOR	Cal. Day	200				
652.452	AUTOMATED TRAILER MOUNTED SPEED LIMIT SIGN	Each	3				
652.46	TEMPORARY PORTABLE RUMBLE STRIPS	Unit	50				

CARRIED FORWARD:

Item No	Item Description	Units	Approx. Quantities	Unit Prices in Numbers		Bid Amount in Numbers	
				Dollars	Cents	Dollars	Cents
BROUGHT FORWARD:							
652.47	SEQUENTIAL FLASHING WARNING LIGHTS	Each	30				
655.012	INSTALLATION OF CASH LANE CONTROLLER CABINET	Each	8				
655.02	DVAS MOUNT INSTALLATION	Each	8				
655.041	INSTALLATION OF SENSOR LOOPS - SOUTHBOUND	Lump Sum	1				
655.042	INSTALLATION OF SENSOR LOOPS - NORTHBOUND	Lump Sum	1				
655.05	INSTALLATION OF AVI ANTENNAS	Each	10				
655.07	TRAFFIC CONTROL PEDESTAL PREPARATION WORK	Each	6				
655.1000	#2/0 AWG WIRE	Linear Foot	4,820				
655.101	#6 AWG WIRE	Linear Foot	2,216				
655.102	#2 AWG WIRE	Linear Foot	12,400				
655.11	#10 AWG WIRE	Linear Foot	1,205				
655.12	#12 AWG WIRE	Linear Foot	24,900				

CARRIED FORWARD:

Item No	Item Description	Units	Approx. Quantities	Unit Prices in Numbers		Bid Amount in Numbers	
				Dollars	Cents	Dollars	Cents
BROUGHT FORWARD:							
655.13	#14 AWG WIRE	Linear Foot	100				
655.141	4PR/24 (CATEGORY 5E) CABLE	Linear Foot	6,830				
655.151	LMR 600 CABLE	Linear Foot	870				
655.16	6 STRAND MULTI-MODAL FIBER OPTIC CABLE	Linear Foot	4,700				
655.17	IVIS HOMERUN LOOP CABLE (IMSA 50-2 #14)	Linear Foot	100				
655.200	1-1/2" SCHEDULE 40 PVC CONDUIT	Linear Foot	60				
655.201	3" SCHEDULE 40 PVC CONDUIT	Linear Foot	100				
655.2021	1" SCHEDULE 80 PVC CONDUIT	Linear Foot	130				
655.203	1 1/2" SCHEDULE 80 PVC CONDUIT	Linear Foot	370				
655.2031	2" SCHEDULE 80 PVC CONDUIT	Linear Foot	180				
655.204	3" SCHEDULE 80 PVC CONDUIT	Linear Foot	14,420				
655.206	1" GALVANIZED RIGID METAL CONDUIT	Linear Foot	300				

CARRIED FORWARD:

Item No	Item Description	Units	Approx. Quantities	Unit Prices in Numbers		Bid Amount in Numbers	
				Dollars	Cents	Dollars	Cents
BROUGHT FORWARD:							
655.207	1 1/2" GALVANIZED RIGID METAL CONDUIT	Linear Foot	100				
655.2071	2" GALVANIZED RIGID METAL CONDUIT	Linear Foot	310				
655.208	3" GALVANIZED RIGID METAL CONDUIT	Linear Foot	210				
655.209	1/2" LIQUID TIGHT METALLIC FLEXIBLE CONDUIT	Linear Foot	50				
655.2101	1 1/2" LIQUID TIGHT METALLIC FLEXIBLE CONDUIT	Linear Foot	100				
655.2102	2" LIQUID TIGHT METALLIC FLEXIBLE CONDUIT	Linear Foot	100				
655.221	TYPE A PULL BOX INSIDE	Each	10				
655.2212	TYPE B PULL BOX OUTDOOR	Each	8				
655.222	TYPE C PULL BOX INSIDE	Each	12				
655.223	TYPE D PULL BOX OUTDOOR	Each	8				
655.224	TYPE E PULL BOX INSIDE	Each	8				
655.225	TYPE F PULL BOX OUTDOOR	Each	16				

CARRIED FORWARD:

Item No	Item Description	Units	Approx. Quantities	Unit Prices in Numbers		Bid Amount in Numbers	
				Dollars	Cents	Dollars	Cents
BROUGHT FORWARD:							
655.227	TYPE H PULL BOX OUTDOOR	Each	16				
655.42	36" X 30" X 20" NEMA 4X CABINET	Each	3				
655.421	EXIT TOLL POWER AND COMMUNICATION CABINET	Each	1				
655.501	1" PVC CONDUIT CONDULETS	Each	10				
655.502	1-1/2" PVC CONDUIT CONDULETS	Each	10				
655.503	2" PVC CONDUIT CONDULETS	Each	24				
655.504	3" PVC CONDUIT CONDULETS	Each	16				
655.512	1" RIGID METAL CONDUIT CONDULETS	Each	20				
655.513	1-1/2" RIGID METAL CONDUIT CONDULETS	Each	20				
655.514	2" RIGID METAL CONDUIT CONDULETS	Each	16				
655.515	3" RIGID METAL CONDUIT CONDULETS	Each	10				
655.63	4-INCH X 4-INCH PLASTIC NEMA 4X WIREWAY	Linear Foot	160				

CARRIED FORWARD:

Item No	Item Description	Units	Approx. Quantities	Unit Prices in Numbers		Bid Amount in Numbers	
				Dollars	Cents	Dollars	Cents
BROUGHT FORWARD:							
655.64	6-INCH X 6-INCH PLASTIC NEMA 4X WIREWAY	Linear Foot	160				
655.801	LIGHTNING SUPPRESSION SYSTEM - SOUTHBOUND ENTRY AND EXIT	Lump Sum	1				
655.802	LIGHTNING SUPPRESSION SYSTEM - NORTHBOUND ENTRY AND EXIT	Lump Sum	1				
655.81	KEY SWITCH	Each	14				
655.82	DUPLEX RECEPTACLE	Each	4				
655.84	QUADPLEX RECEPTACLE	Each	4				
655.92	LED CANOPY LIGHT FIXTURE	Each	12				
655.99	LED BUMPER BEACON	Each	6				
656.50	BALED HAY, IN-PLACE	Each	50				
656.60	TEMPORARY BERMS	Linear Foot	3,000				
656.62	TEMPORARY SLOPE DRAINS	Linear Foot	500				
656.632	30" TEMPORARY SILT FENCE	Linear Foot	21,660				

CARRIED FORWARD:

Item No	Item Description	Units	Approx. Quantities	Unit Prices in Numbers		Bid Amount in Numbers	
				Dollars	Cents	Dollars	Cents
BROUGHT FORWARD:							
659.10	MOBILIZATION	Lump Sum	1				
670.011	SEWAGE DISPOSAL SYSTEM - SOUTHBOUND	Lump Sum	1				
673.01	STORMWATER SOIL FILTER BED	Cubic Yard	1,400				
674.10	PREFABRICATED CONCRETE MODULAR GRAVITY WALL - GOOSEFARE BROOK	Lump Sum	1				
800.01	TOLL ADMINISTRATION BUILDING - NORTHBOUND	Lump Sum	1				
800.011	UTILITY BUILDING - NORTHBOUND	Lump Sum	1				
800.02	TOLL ADMINISTRATION BUILDING - SOUTHBOUND	Lump Sum	1				
800.401	NEW TOLL BOOTH INSTALLATION - SOUTHBOUND	Lump Sum	1				
800.402	NEW TOLL BOOTH INSTALLATION - NORTHBOUND	Lump Sum	1				
800.901	GENERATOR PAD - SOUTHBOUND	Lump Sum	1				
800.902	GENERATOR PAD - NORTHBOUND	Lump Sum	1				
800.91	TRANSFORMER PAD	Lump Sum	1				

CARRIED FORWARD:

Item No	Item Description	Units	Approx. Quantities	Unit Prices in Numbers		Bid Amount in Numbers	
				Dollars	Cents	Dollars	Cents
BROUGHT FORWARD:							
800.921	STAND-BY GENERATOR AND TRANSFER SWITCH - SOUTHBOUND	Lump Sum	1				
800.922	STAND-BY GENERATOR AND TRANSFER SWITCH - NORTHBOUND	Lump Sum	1				
801.16	6" PVC SANITARY SEWER (SDR-35)	Linear Foot	120				
801.17	8" PVC SANITARY SEWER (SDR-35)	Linear Foot	490				
803.01	TEST PITS	Each	11				
803.173	SEWER MANHOLE - 4 FOOT DIAMETER	Each	2				
810.01	MAIN INSTALLATION 6" VIA TRENCH ,DUCTILE IRON (HYDRANT LATERAL)	Linear Foot	50				
810.02	MAIN INSTALLATION 8" VIA TRENCH HDPE (INCLUDES HDPE SLEEVE)	Linear Foot	370				
810.03	MAIN INSTALLATION 12" VIA TRENCH, DUCTILE IRON	Linear Foot	600				
811.01	HYDRANT INSTALLATION	Each	3				
812.01	TEMPORARY BLOWOFF ASSEMBLY	Each	1				
813.01	CONNECT TO EXISTING MAIN	Each	6				

CARRIED FORWARD:

Item No	Item Description	Units	Approx. Quantities	Unit Prices in Numbers		Bid Amount in Numbers	
				Dollars	Cents	Dollars	Cents
BROUGHT FORWARD:							
820.01	THRUST BLOCK	Each	12				
832.41	TYPE A STEEL SITE BOLLARD	Each	30				
845.301	RELOCATE BUSINESS SIGN NO. 1	Each	1				
845.302	RELOCATE BUSINESS SIGN NO. 2	Each	1				
845.303	RELOCATE BUSINESS SIGN NO. 3	Each	1				
TOTAL:							

SPECIAL PROVISION

SECTION 603

PIPE CULVERTS AND STORM DRAINS

(Reinforced Concrete Collar)

603.01 Description

The following paragraphs are added:

This work also consists of furnishing and installing a concrete collar to join existing concrete pipe to the proposed concrete pipe in accordance with the details as shown on the Plans. The Contractor shall note that the pipe ends may be of different sizes and may not fit snugly together.

603.02 Materials

Concrete shall be Class “AAA”.

Reinforcing Steel shall be ASTM A615, Grade 60 epoxy coated.

603.11 Method of Measurement

The following paragraph is added:

The Reinforced Concrete Collar shall be measured by each unit installed, complete in place and accepted. This shall be full compensation for furnishing labor and materials to construct a Reinforced Concrete Collar to connect the existing and proposed pipe ends in a working like manner as shown in the plans.

603.12 Basis of Payment

Reinforced Concrete Collars will be paid for at the Contract unit price each regardless of the size of the existing and proposed pipes. This price shall be full compensation for supplying and installing reinforcement as shown in the plans and including all equipment, materials, incidentals, and labor necessary to satisfactorily complete the work.

Payment will be made under:

<u>Pay Item</u>		<u>Pay Unit</u>
603.2801	Reinforced Concrete Collar	Each

SPECIAL PROVISION

SECTION 618

SEEDING

618.10 Maintenance and Acceptance

The first paragraph is deleted in its entirety and replaced with the following:

The Authority will accept areas seeded with Seeding Method 1 or 2 upon attainment of a reasonably thick uniform stand of permanent grass species with at least 90 percent coverage of grass, free from sizable thin or bare spots. All reseeded shall comply with Sections 618.03 through 618.09, and will be completed as necessary to achieve a uniform grass coverage of 90% throughout the entire project site. Areas that have not received final acceptance prior to September 15th will not be accepted until the spring following any necessary reseeded.

Date: 11/4/2022

ESTIMATED QUANTITIES			
ITEM NO.	DESCRIPTION	TOTAL QUANTITY	UNIT
201.11	CLEARING	6	AC
201.23	REMOVING SINGLE TREE TOP ONLY	26	EA
201.24	REMOVING STUMP	15	EA
202.08	REMOVING BUILDING NO. 1	1	LS
202.12	REMOVING EXISTING STRUCTURAL CONCRETE	10	CY
202.15	REMOVING EXISTING MANHOLE OR CATCH BASIN	20	EA
202.202	REMOVING PAVEMENT SURFACE	18,850	SY
202.205	RUMBLE STRIPS	18,100	EA
202.206	REMOVING RUMBLE STRIPS	18,100	LF
203.20	COMMON EXCAVATION	120,600	CY
203.21	ROCK EXCAVATION	1800	CY
203.2312	HEALTH AND SAFETY PLAN (HASP)	1	LS
203.2319	MEDIA MANAGEMENT PLAN (EMMP)	1	LS
203.2333	DISPOSAL/TREATMENT OF SPECIAL EXCAVATION	540	TON
203.2334	DISPOSAL/TREATMENT OF GROUNDWATER	105,000	GAL
203.25	GRANULAR BORROW	21,150	CY
203.33	SPECIAL FILL - STREAMBED MATERIAL	20	CY
203.52	LOW PERMEABILITY FILL	300	CY
206.082	STRUCTURAL EARTH EXCAVATION - MAJOR STRUCTURES, PLAN QUANTITY	610	CY
209.29	PREFABRICATED VERTICAL DRAINS	85,800	LF
304.10	AGGREGATE SUBBASE COURSE - GRAVEL	40,050	CY
304.14	AGGREGATE BASE COURSE - TYPE A	23,200	CY
403.207	HOT MIX ASPHALT, 19.0 mm NOMINAL MAXIMUM SIZE	7900	TON
403.2072	19.0 mm ASPHALT RICH BASE HMA	7750	TON
403.208	HOT MIX ASPHALT, 12.5 mm	1710	TON
403.2081	HOT MIX ASPHALT, 12.5 mm (POLYMER MODIFIED) - RAP	7300	TON
403.209	HOT MIX ASPHALT, 9.5 mm NOMINAL MAXIMUM SIZE (SIDEWALKS, DRIVES, ISLANDS & INCIDENTALS)	382	TON
403.211	HOT MIX ASPHALT, 9.5 mm NOMINAL MAXIMUM SIZE (SHIMMING)	200	TON
403.213	HOT MIX ASPHALT, 12.5 mm NOMINAL MAXIMUM SIZE (BASE AND INTERMEDIATE BASE COURSE)	9010	TON
409.15	BITUMINOUS TACK COAT RS-1 OR RS1H - APPLIED	8450	GAL
409.152	BITUMINOUS TACK COAT NTSS - IHM TRACKLESS - APPLIED	6240	GAL
419.30	SAWING BITUMINOUS PAVEMENT	16,000	LF
424.323	ASHPALT RUBBER MASTIC CRACK SEALER - APPLIED	1890	LB
470.08	BERM DROPOFF CORRECTION - GRINDINGS	440	TON
501.231	DYNAMIC LOAD TEST	4	EA
501.54	STEEL H-BEAM PILES 117 LB/FT, DELIVERED	2500	LF
501.541	STEEL H-BEAM PILES 117 LB/FT, IN PLACE	2500	LF
501.90	PILE TIPS	44	EA
501.91	PILE SPLICES	38	EA
501.92	PILE DRIVING EQUIPMENT MOBILIZATION	1	LS
502.21	STRUCTURAL CONCRETE, ABUTMENTS AND RETAINING WALLS	10	CY
502.262	STRUCTURAL CONCRETE, PAVEMENT SLABS (659 CY)	1	LS
502.263	STRUCTURAL CONCRETE, PLAZA ISLANDS, BUMPERS, AND CURTAIN WALLS (124 CY)	1	LS
502.264	STRUCTURAL CONCRETE, PILE CAPS (148 CY)	1	LS
502.265	STRUCTURAL CONCRETE, UTILITY PITS (79 CY)	1	LS
502.266	STRUCTURAL CONCRETE, PEDESTALS AND FOOTINGS (18 CY)	1	LS
502.701	BRIDGE DRAIN DOWNSPOUT EXTENSION	4	EA
502.7011	WEEP DRAIN EXTENSIONS	1	LS
503.14	EPOXY-COATED REINFORCING STEEL, FABRICATED AND DELIVERED	132,000	LB
503.15	EPOXY-COATED REINFORCING STEEL, PLACING	132,000	LB
503.18	GLASS FIBER REINFORCED POLYMER (GFRP) REINFORCING BARS, FABRICATED AND DELIVERED	85,300	LF
503.19	GLASS FIBER REINFORCED POLYMER (GFRP) REINFORCING BARS, PLACING	85,300	LF
503.90	SYNTHETIC FIBER REINFORCEMENT	2000	LB
504.50	TOLL PLAZA CANOPY - NORTHBOUND	1	LS
504.51	TOLL PLAZA CANOPY - SOUTHBOUND	1	LS
504.61	TOLL GANTRY - NORTHBOUND	1	LS
504.62	TOLL DUAL PURPOSE MAST ARM - SOUTHBOUND	1	LS
506.142	FIELD PAINTING OF EXISTING STRUCTURAL STEEL	1	LS
508.14	HIGH PERFORMANCE WATERPROOFING MEMBRANE	1	LS
511.071	COFFERDAM - GOOSEFARE BROOK	1	LS
513.09	SLOPE PROTECTION - PORTLAND CEMENT CONCRETE	36	SY
514.06	CURING BOX FOR CONCRETE CYLINDERS	1	EA
515.201	PIGMENTED PROTECTIVE COATING FOR CONCRETE SURFACES	610	SY
515.202	CLEAR PROTECTIVE COATING FOR CONCRETE SURFACES	1100	SY
515.203	BROADCAST SEALANT FOR CONCRETE SURFACES	910	SY


ESTIMATED QUANTITIES			
ITEM NO.	DESCRIPTION	TOTAL QUANTITY	UNIT
515.23	EPOXY OVERLAY	86	SY
518.10	ABUTMENT REPAIRS	20	SF
518.39	GRANITE CURB JOINT MORTAR AND BEDDING MORTAR REPAIR	400	LF
518.40	EPOXY INJECTION CRACK REPAIR	5	LF
518.43	PARAPET JOINT REPAIR	100	LF
518.50	REPAIR OF UPWARD FACING SURFACES - TO REINFORCING STEEL < 8 INCHES	5	SF
518.60	REPAIR OF VERTICAL SURFACES < 8 INCHES	5	SF
518.80	PARTIAL BERTH CONCRETE DECK REPAIRS	100	SF
518.864	ELASTOMERIC CONCRETE HEADER REPAIR	24	CF
520.231	EXPANSION DEVICE - ASPHALTIC PLUG JOINT FOR CRACK CONTROL	180	LF
526.301	TEMPORARY CONCRETE BARRIER, TYPE I	5000	LF
526.306	TEMPORARY CONCRETE BARRIER, TYPE I - SUPPLIED BY AUTHORITY	1	LS
526.307	CONCRETE BARRIER TYPE I - STORMWATER FILTER	90	LF
526.351	CONCRETE BARRIER - TYPE A	1	LS
526.368	CONCRETE BARRIER - TYPE C GUARDRAIL TRANSITION BARRIER	2	EA
527.307	CENTER BARRIER CRASH ATTENUATOR (SMART CUSHION)	2	EA
527.341	WORK ZONE CRASH CUSHION - TL-3	7	UNIT
527.342	WORK ZONE CRASH CUSHION - TL-2	1	UNIT
602.40	PUMPED GROUT FILL	12	CY
603.151	12 INCH CORRUGATED METAL PIPE	6	LF
603.155	12 INCH REINFORCED CONCRETE PIPE - CLASS III	230	LF
603.1553	12 INCH REINFORCED CONCRETE PIPE - CLASS V	55	LF
603.159	12 INCH CULVERT PIPE OPTION III	740	LF
603.165	15 INCH REINFORCED CONCRETE PIPE - CLASS III	40	LF
603.1653	15 INCH REINFORCED CONCRETE PIPE - CLASS V	3	LF
603.169	15 INCH CULVERT PIPE OPTION III	77	LF
603.175	18 INCH REINFORCED CONCRETE PIPE - CLASS III	280	LF
603.1753	18 INCH REINFORCED CONCRETE PIPE - CLASS V	190	LF
603.179	18 INCH CULVERT PIPE OPTION III	20	LF
603.195	24 INCH REINFORCED CONCRETE PIPE - CLASS III	140	LF
603.2053	30 INCH REINFORCED CONCRETE PIPE - CLASS V	52	LF
603.215	36 INCH REINFORCED CONCRETE PIPE - CLASS III	170	LF
603.2153	36 INCH REINFORCED CONCRETE PIPE - CLASS V	150	LF
603.235	48 INCH REINFORCED CONCRETE PIPE - CLASS III	34	LF
603.245	54 INCH REINFORCED CONCRETE PIPE - CLASS III	44	LF
603.28	CONCRETE COLLAR	11	EA
603.2801	REINFORCED CONCRETE COLLAR	1	EA
603.285	84 INCH REINFORCED CONCRETE PIPE - CLASS III	26	LF
604.073	CATCH BASIN TYPE A	3	EA
604.09	CATCH BASIN TYPE BI	5	EA
604.092	CATCH BASIN TYPE BI-C	22	EA
604.096	60" CATCH BASIN TYPE BI-C	2	EA
604.15	MANHOLE	2	EA
604.16	ALTERING CATCH BASIN TO MANHOLE	1	EA
604.18	ADJUSTING MANHOLE OR CATCH BASIN TO GRADE	7	EA
604.182	CLEANING EXISTING CATCH BASIN AND MANHOLE	30	EA
604.246	CATCH BASIN TYPE F5	12	EA
604.248	CATCH BASIN TYPE F6	22	EA
604.249	CATCH BASIN TYPE F6-C	2	EA
604.25	CATCH BASIN TYPE A5	1	EA
604.26	CATCH BASIN TYPE B5	28	EA
604.262	CATCH BASIN TYPE B5-C	4	EA
604.263	60" CATCH BASIN TYPE B5	2	EA
604.40	SECURE CATCH BASIN GRATE	11	EA
605.016	6" PVC UNDERDRAIN	2600	LF
605.018	8" PVC UNDERDRAIN	820	LF
605.09	6 INCH UNDERDRAIN TYPE B	2180	LF
605.11	12 INCH UNDERDRAIN TYPE C	3739	LF
605.12	15 INCH UNDERDRAIN TYPE C	1870	LF
605.13	18 INCH UNDERDRAIN TYPE C	1250	LF
605.15	24 INCH UNDERDRAIN TYPE C	406	LF
606.1301	3" W-BEAM GUARDRAIL - MID-WAY SPLICE (7' STEEL POSTS, 8" OFFSET BLOCKS, SINGLE FACED)	6800	LF
606.1303	3" W-BEAM GUARDRAIL - MID-WAY SPLICE - 15' RADIUS & LESS	38	LF
606.1304	3" W-BEAM GUARDRAIL - MID-WAY SPLICE - OVER 15' RADIUS	150	LF
606.1307	3" W-BEAM GUARDRAIL - MID-WAY SPLICE FLARED TERMINAL	17	EA
606.132	3" W-BEAM GUARDRAIL - MID-WAY SPLICE (7' STEEL POSTS, 8" OFFSET BLOCKS, DOUBLE FACED)	3700	LF
606.1351	3" W-BEAM GUARDRAIL - MID-WAY SPLICE TERMINAL END - ANCHORED END	15	EA
606.1352	3" W-BEAM GUARDRAIL - MID-WAY SPLICE TERMINAL END - ANCHORED END, DOUBLE FACED	1	EA
606.1723	BRIDGE TRANSITION - TYPE III	6	EA
606.265	TERMINAL END - SINGLE RAIL - GALVANIZED STEEL	6	EA
606.279	TERMINAL END - ANCHORED END, THRIE BEAM	2	EA
606.352	REFLECTORIZED BEAM GUARDRAIL DELINEATOR	190	EA
606.356	UNDERDRAIN DELINEATOR POST	105	EA

△

Scale:

No.	Revision	By	Date
△	ADDED REINFORCED CONCRETE COLLAR	JRH	11/22


Designed by:



CONSULTANT PROJECT MANAGER: LAUREN MEEK, P.E.

	By	Date	By	Date
Designed	JRH	10\22	Checked	PLP 10\22
Drawn	THG	10\22	In Charge of	LEM 10\22

STANTEC CONSULTING SERVICES INC.
2211 CONGRESS STREET SUITE 380
PORTLAND, ME 04102
TEL (207) 887-3448
FAX (207) 883-3376



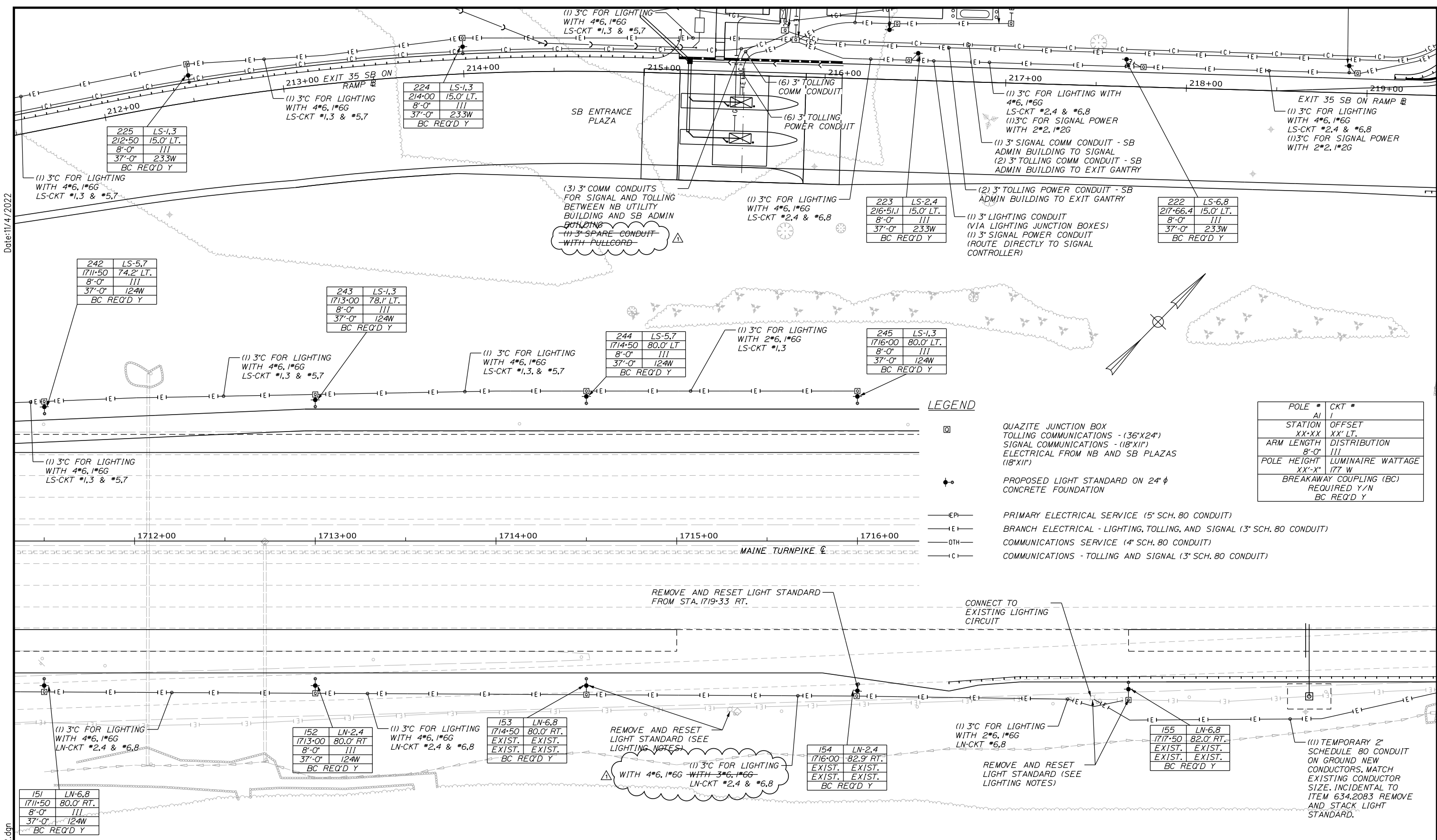
THE GOLD STAR MEMORIAL HIGHWAY

MTA PROJECT MANAGER: RYAN BARNES, PE, CPESC

INTERCHANGE IMPROVEMENTS
SACO (EXITS 35 & 36)
ESTIMATED QUANTITIES 1

SHEET NUMBER: QN-01
CONTRACT: 2022.07
2 OF 735

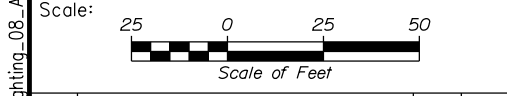
Date: 11/4/2022



LEGEND

☐	QUAZITE JUNCTION BOX TOLLING COMMUNICATIONS - (36\"X24\") SIGNAL COMMUNICATIONS - (18\"X12\") ELECTRICAL FROM NB AND SB PLAZAS (18\"X12\")
⬤	PROPOSED LIGHT STANDARD ON 24\" φ CONCRETE FOUNDATION
—EP—	PRIMARY ELECTRICAL SERVICE (5\" SCH. 80 CONDUIT)
—EI—	BRANCH ELECTRICAL - LIGHTING, TOLLING, AND SIGNAL (3\" SCH. 80 CONDUIT)
—OTH—	COMMUNICATIONS SERVICE (4\" SCH. 80 CONDUIT)
—C—	COMMUNICATIONS - TOLLING AND SIGNAL (3\" SCH. 80 CONDUIT)

POLE #	AI	CKT #	I
STATION	XX.XX	OFFSET	XX' LT.
ARM LENGTH	8'-0"	DISTRIBUTION	III
POLE HEIGHT	XX'-X"	LUMINAIRE WATTAGE	177 W
BREAKAWAY COUPLING (BC)		REQUIRED Y/N	BC REQ'D Y



Designed by:

Stantec

CONSULTANT PROJECT MANAGER: LAUREN MEEK, P.E.

No.	Revision	By	Date
Δ	REVISED NOTE	JRH	11/22

Designed	MRC	10\22	Checked	PJV	10\22
Drawn	CHL	10\22	In Charge of	LEM	10\22

STANTEC CONSULTING SERVICES INC.
2211 CONGRESS STREET SUITE 380
PORTLAND, ME 04102
TEL (207) 887-3448
FAX (207) 883-3376

MAINE TURNPIKE

THE GOLD STAR MEMORIAL HIGHWAY

MTA PROJECT MANAGER: RYAN BARNES, PE, CPESC

INTERCHANGE IMPROVEMENTS
SACO (EXITS 35 & 36)

POWER AND COMMUNICATION PLAN 8

SHEET NUMBER: LP-09
254 OF 735

CONTRACT: 2022.07

Contract 2022.07
Addendum No. 2
Page 35 of 42

Filename: ...Lighting_08_A2.dgn

LEGEND

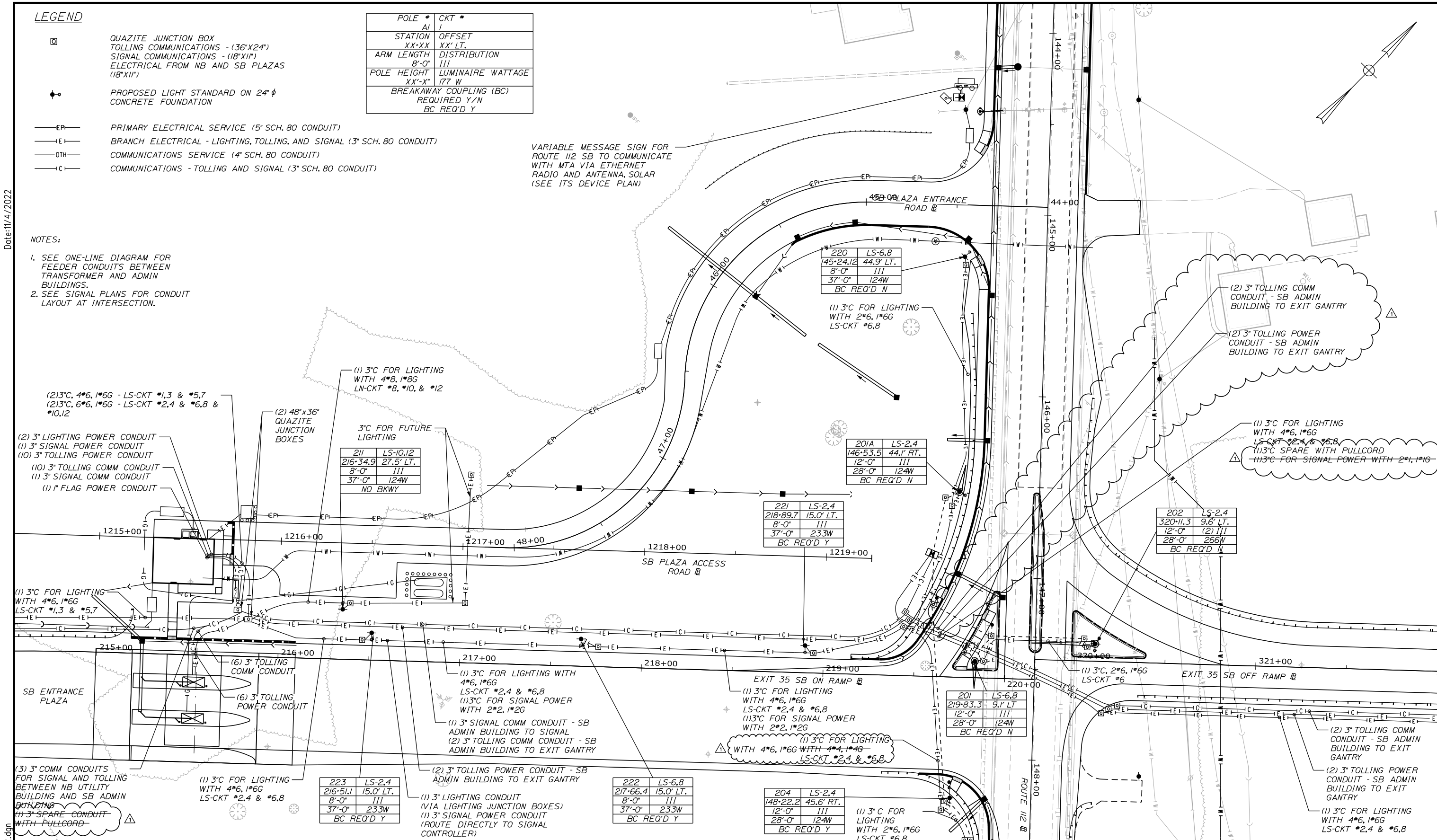
- ☐ QUAZITE JUNCTION BOX
TOLLING COMMUNICATIONS - (36"x24")
SIGNAL COMMUNICATIONS - (18"x11")
ELECTRICAL FROM NB AND SB PLAZAS
(18"x11")
- ⊕ PROPOSED LIGHT STANDARD ON 24" φ
CONCRETE FOUNDATION
- EP— PRIMARY ELECTRICAL SERVICE (5" SCH. 80 CONDUIT)
- EI— BRANCH ELECTRICAL - LIGHTING, TOLLING, AND SIGNAL (3" SCH. 80 CONDUIT)
- OTH— COMMUNICATIONS SERVICE (4" SCH. 80 CONDUIT)
- C— COMMUNICATIONS - TOLLING AND SIGNAL (3" SCH. 80 CONDUIT)

POLE #	AI	CKT #	/
STATION	XX'XX	OFFSET	XX' LT.
ARM LENGTH	8'-0"	DISTRIBUTION	III
POLE HEIGHT	XX'-X"	LUMINAIRE WATTAGE	177 W
BREAKAWAY COUPLING (BC) REQUIRED Y/N BC REQ'D Y			

VARIABLE MESSAGE SIGN FOR
ROUTE 112 SB TO COMMUNICATE
WITH MTA VIA ETHERNET
RADIO AND ANTENNA, SOLAR
(SEE ITS DEVICE PLAN)

NOTES:

1. SEE ONE-LINE DIAGRAM FOR FEEDER CONDUITS BETWEEN TRANSFORMER AND ADMIN BUILDINGS.
2. SEE SIGNAL PLANS FOR CONDUIT LAYOUT AT INTERSECTION.



Date: 11/4/2022

Scale: 25 0 25 50
Scale of Feet

No.	Revision	By	Date
Δ	REVISED NOTE	JRH	11/22

Designed by:

Stantec

CONSULTANT PROJECT MANAGER: LAUREN MEEK, P.E.

	By	Date	By	Date	
Designed	MRC	10\22	Checked	PJV	10\22
Drawn	CHL	10\22	In Charge of	LEM	10\22

STANTEC CONSULTING SERVICES INC.
2211 CONGRESS STREET SUITE 380
PORTLAND, ME 04102
TEL (207) 887-3448
FAX (207) 883-3376

MAINE TURNPIKE

THE GOLD STAR MEMORIAL HIGHWAY

MTA PROJECT MANAGER: RYAN BARNES, PE, CPESC

INTERCHANGE IMPROVEMENTS
SACO (EXITS 35 & 36)

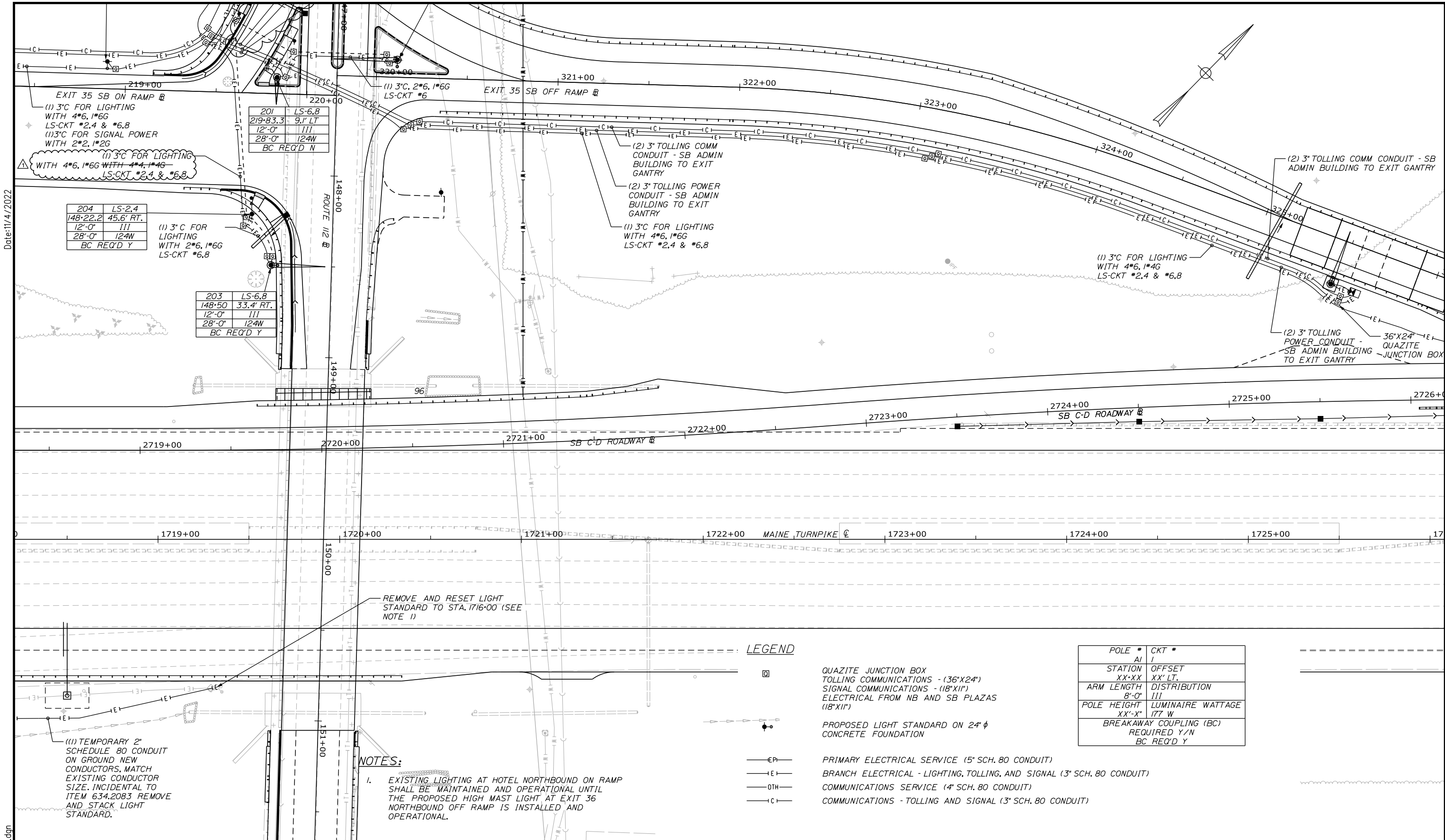
POWER AND COMMUNICATION PLAN 9

SHEET NUMBER: LP-10
255 OF 735

CONTRACT: 2022.07

Contract 2022.07
Addendum No. 2
Page 36 of 42

Filename: ...Lighting_09_A2.dgn



Date: 11/4/2022

Filename: ...Lighting_10_A2.dwg

204	LS-2,4
148-22.2	45.6' RT.
12'-0"	111
28'-0"	124W
BC REQ'D Y	

(1) 3" C FOR LIGHTING WITH 2*6, 1*6G LS-CKT *6,8

203	LS-6,8
148-50	33.4' RT.
12'-0"	111
28'-0"	124W
BC REQ'D Y	

201	LS-6,8
219-83.3	91' LT
12'-0"	111
28'-0"	124W
BC REQ'D N	

NOTES:

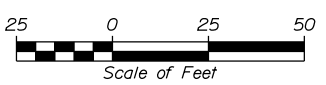
- EXISTING LIGHTING AT HOTEL NORTHBOUND ON RAMP SHALL BE MAINTAINED AND OPERATIONAL UNTIL THE PROPOSED HIGH MAST LIGHT AT EXIT 36 NORTHBOUND OFF RAMP IS INSTALLED AND OPERATIONAL.

REMOVE AND RESET LIGHT STANDARD TO STA. 1716+00 (SEE NOTE 1)

LEGEND

- QUAZITE JUNCTION BOX TOLLING COMMUNICATIONS - (36"x24") SIGNAL COMMUNICATIONS - (18"x12") ELECTRICAL FROM NB AND SB PLAZAS (18"x12")
- PROPOSED LIGHT STANDARD ON 24" φ CONCRETE FOUNDATION
- PRIMARY ELECTRICAL SERVICE (5" SCH. 80 CONDUIT)
- BRANCH ELECTRICAL - LIGHTING, TOLLING, AND SIGNAL (3" SCH. 80 CONDUIT)
- COMMUNICATIONS SERVICE (4" SCH. 80 CONDUIT)
- COMMUNICATIONS - TOLLING AND SIGNAL (3" SCH. 80 CONDUIT)

POLE #	CKT #
AI	I
STATION XX-XX	OFFSET XX' LT.
ARM LENGTH 8'-0"	DISTRIBUTION 111
POLE HEIGHT XX'-X"	LUMINAIRE WATTAGE 177 W
BREAKAWAY COUPLING (BC) REQUIRED Y/N BC REQ'D Y	



Designed by:



STANTEC CONSULTING SERVICES INC.
2211 CONGRESS STREET SUITE 380
PORTLAND, ME 04102
TEL (207) 887-3448
FAX (207) 883-3376



THE GOLD STAR MEMORIAL HIGHWAY

INTERCHANGE IMPROVEMENTS SACO (EXITS 35 & 36)

POWER AND COMMUNICATION PLAN 10

No.	Revision	By	Date
1	REVISED NOTE	JRH	11/22

CONSULTANT PROJECT MANAGER: LAUREN MEEK, P.E.					
Designed	MRC	10\22	Checked	PJV	10\22
Drawn	CHL	10\22	In Charge of	LEM	10\22

SHEET NUMBER: LP-11

CONTRACT: 2022.07

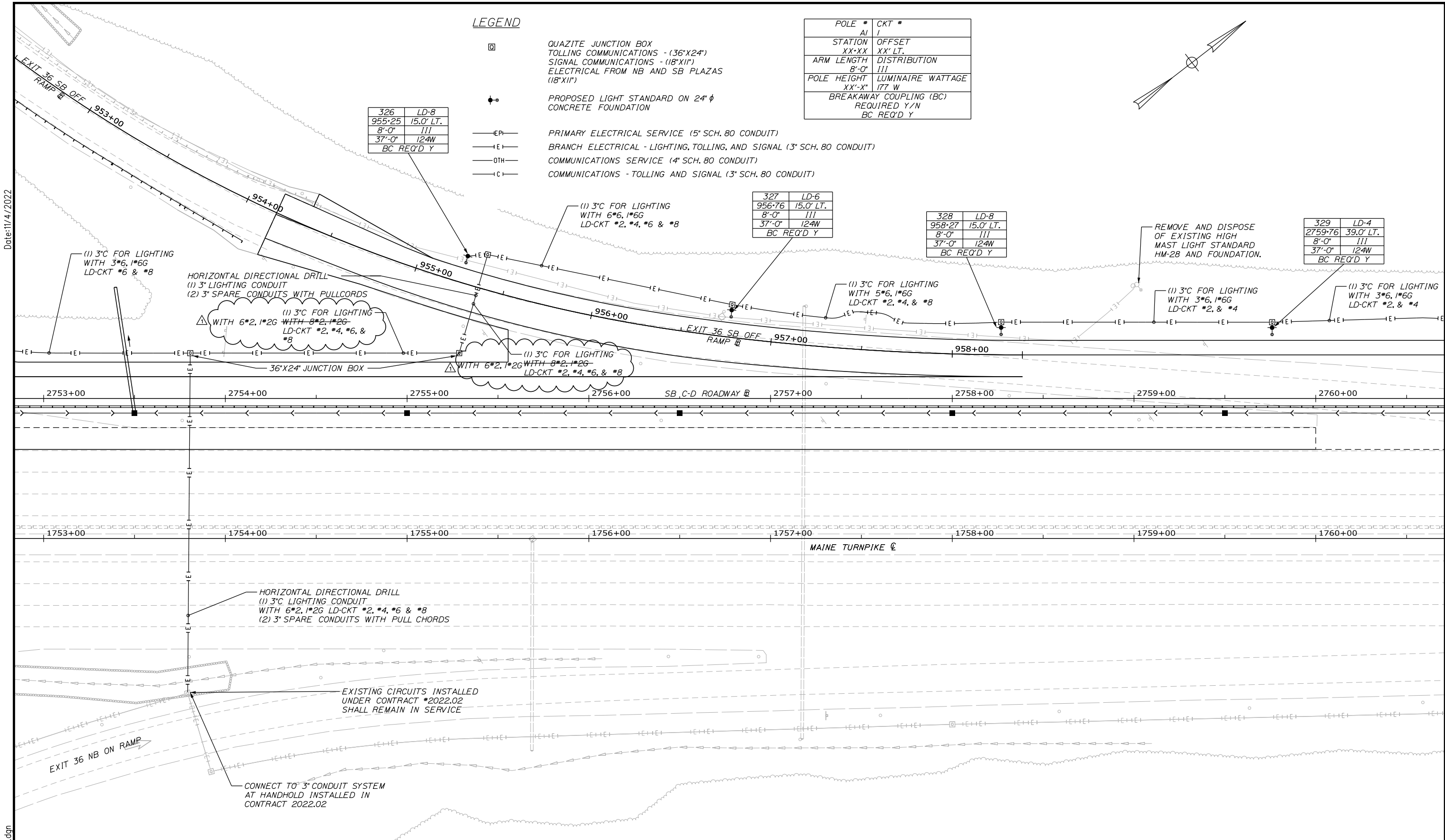
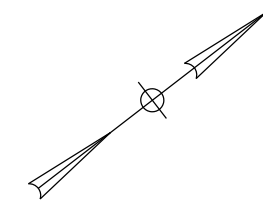
256 OF 735

Date: 11/4/2022

LEGEND

- QUAZITE JUNCTION BOX
- TOLLING COMMUNICATIONS - (36"X24")
- SIGNAL COMMUNICATIONS - (18"X18")
- ELECTRICAL FROM NB AND SB PLAZAS (18"X18")
- ◆ PROPOSED LIGHT STANDARD ON 24" φ CONCRETE FOUNDATION
- EP— PRIMARY ELECTRICAL SERVICE (5" SCH. 80 CONDUIT)
- EI— BRANCH ELECTRICAL - LIGHTING, TOLLING, AND SIGNAL (3" SCH. 80 CONDUIT)
- OTH— COMMUNICATIONS SERVICE (4" SCH. 80 CONDUIT)
- C— COMMUNICATIONS - TOLLING AND SIGNAL (3" SCH. 80 CONDUIT)

POLE #	CKT #
AI	1
STATION	OFFSET
XX-XX	XX' LT.
ARM LENGTH	DISTRIBUTION
8'-0"	111
POLE HEIGHT	LUMINAIRE WATTAGE
XX'-X"	177 W
BREAKAWAY COUPLING (BC)	
REQUIRED Y/N	
BC REQ'D Y	



326	LD-8
955-25	15.0' LT.
8'-0"	111
37'-0"	124W
BC REQ'D Y	

327	LD-6
956-76	15.0' LT.
8'-0"	111
37'-0"	124W
BC REQ'D Y	

328	LD-8
958-27	15.0' LT.
8'-0"	111
37'-0"	124W
BC REQ'D Y	

329	LD-4
2759-76	39.0' LT.
8'-0"	111
37'-0"	124W
BC REQ'D Y	

Scale: 25 0 25 50
Scale of Feet

No.	Revision	By	Date
1	REVISED NOTE	JRH	11/22

Designed by:

CONSULTANT PROJECT MANAGER: LAUREN MEEK, P.E.

Designed	MRC	10\22	Checked	PJV	10\22
Drawn	CHL	10\22	In Charge of	LEM	10\22

STANTEC CONSULTING SERVICES INC.
2211 CONGRESS STREET SUITE 380
PORTLAND, ME 04102
TEL (207) 887-3448
FAX (207) 883-3376

THE GOLD STAR MEMORIAL HIGHWAY

MTA PROJECT MANAGER: RYAN BARNES, PE, CPESC

INTERCHANGE IMPROVEMENTS
SACO (EXITS 35 & 36)

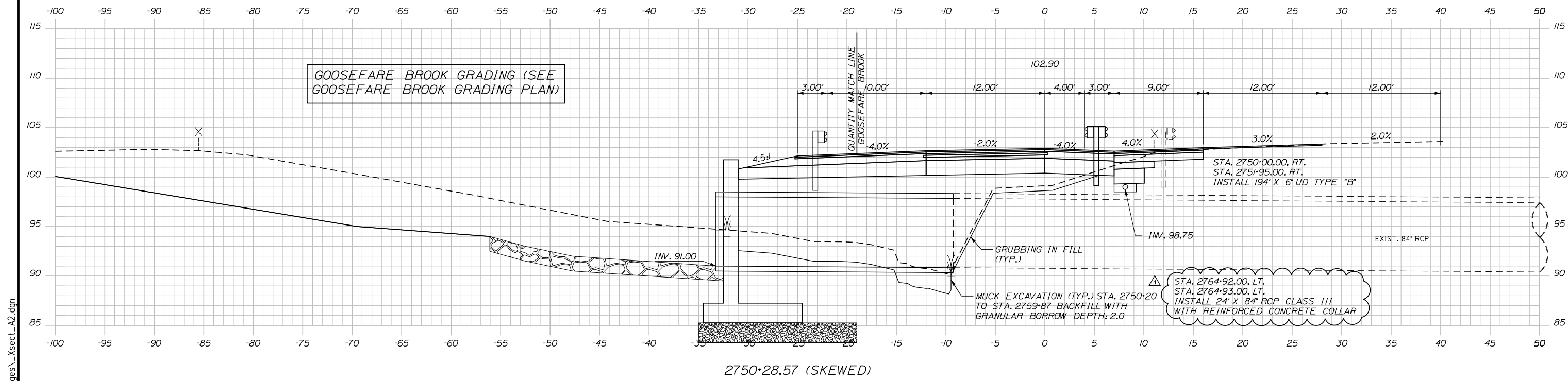
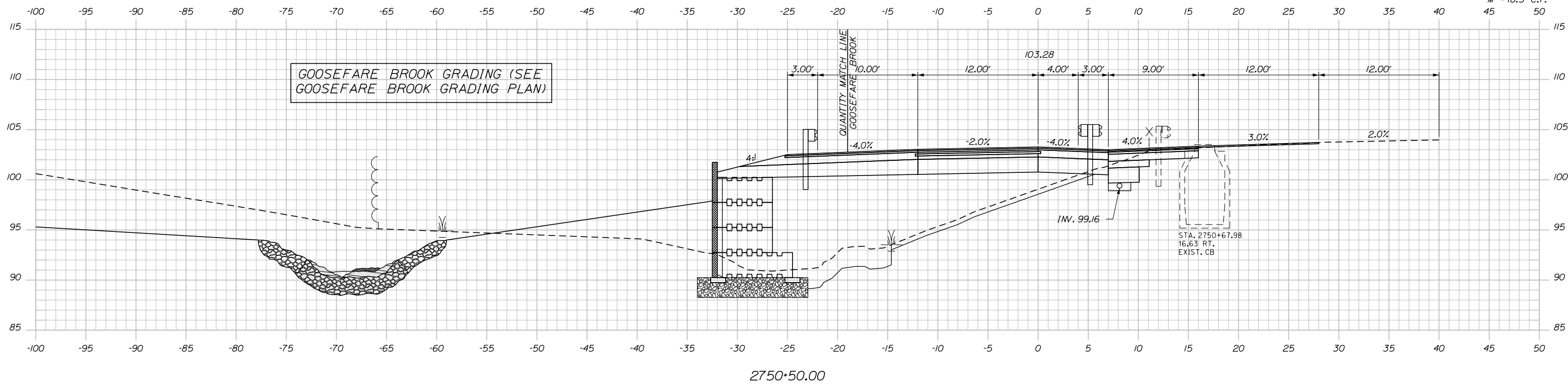
POWER AND COMMUNICATION PLAN 16

SHEET NUMBER: LP-17
262 OF 735

CONTRACT: 2022.07

C = 28.2 C.Y.
 F = 180.1 C.Y.
 G = 27.1 C.Y.
 M = 18.3 C.Y.

Date: 11/4/2022



Scale: 5 0 5 10
 Scale of Feet

No.	Revision	By	Date
1	ADDED REINFORCED CONCRETE COLLAR	JRH	11/22

Designed by:

Stantec

CONSULTANT PROJECT MANAGER: LAUREN MEEK, P.E.

	By	Date	Checked	By	Date
Designed	PLP	10\22	Checked	JRH	10\22
Drawn	THG	10\22	In Charge of	LEM	10\22

STANTEC CONSULTING SERVICES INC.
 2211 CONGRESS STREET SUITE 380
 PORTLAND, ME 04102
 TEL (207) 887-3448
 FAX (207) 883-3376

MAINE TURNPIKE

THE GOLD STAR MEMORIAL HIGHWAY

MTA PROJECT MANAGER: RYAN BARNES, PE, CPESC

INTERCHANGE IMPROVEMENTS
 SACO (EXITS 35 & 36)
 SB C-D ROADWAY
 STA. 2750+28.57 TO STA. 2750+50.00

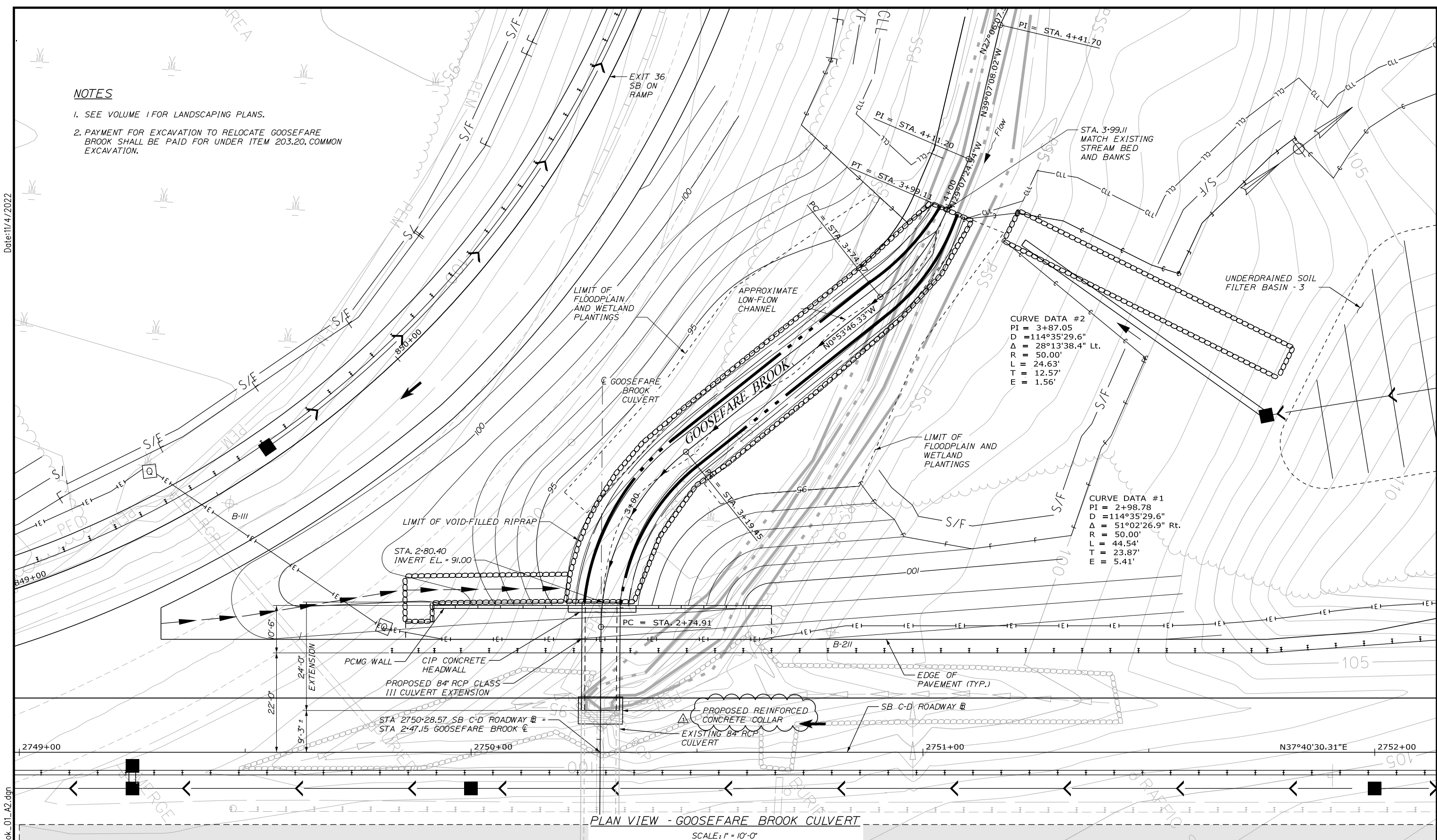
SHEET NUMBER: XS-169
 470 OF 735

CONTRACT: 2022.07

NOTES

- SEE VOLUME I FOR LANDSCAPING PLANS.
- PAYMENT FOR EXCAVATION TO RELOCATE GOOSEFARE BROOK SHALL BE PAID FOR UNDER ITEM 203.20, COMMON EXCAVATION.

Date: 11/4/2022



PLAN VIEW - GOOSEFARE BROOK CULVERT
SCALE: 1" = 10'-0"

Contract 2022.07
Addendum No. 2
Page 40 of 42

Scale: AS NOTED

No.	Revision	By	Date
1	ADDED REINFORCED CONCRETE COLLAR	JRH	11/22

Designed by: Stantec

CONSULTANT PROJECT MANAGER: LAUREN MEEK, P.E.

	By	Date	By	Date	
Designed	SJW	10\22	Checked	TWM	10\22
Drawn	SJW	10\22	In Charge of	LEM	10\22

STANTEC CONSULTING SERVICES INC.
2211 CONGRESS STREET SUITE 380
PORTLAND, ME 04102
TEL (207) 887-3448
FAX (207) 883-3376

MAINE TURNPIKE

THE GOLD STAR MEMORIAL HIGHWAY

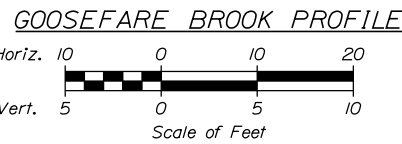
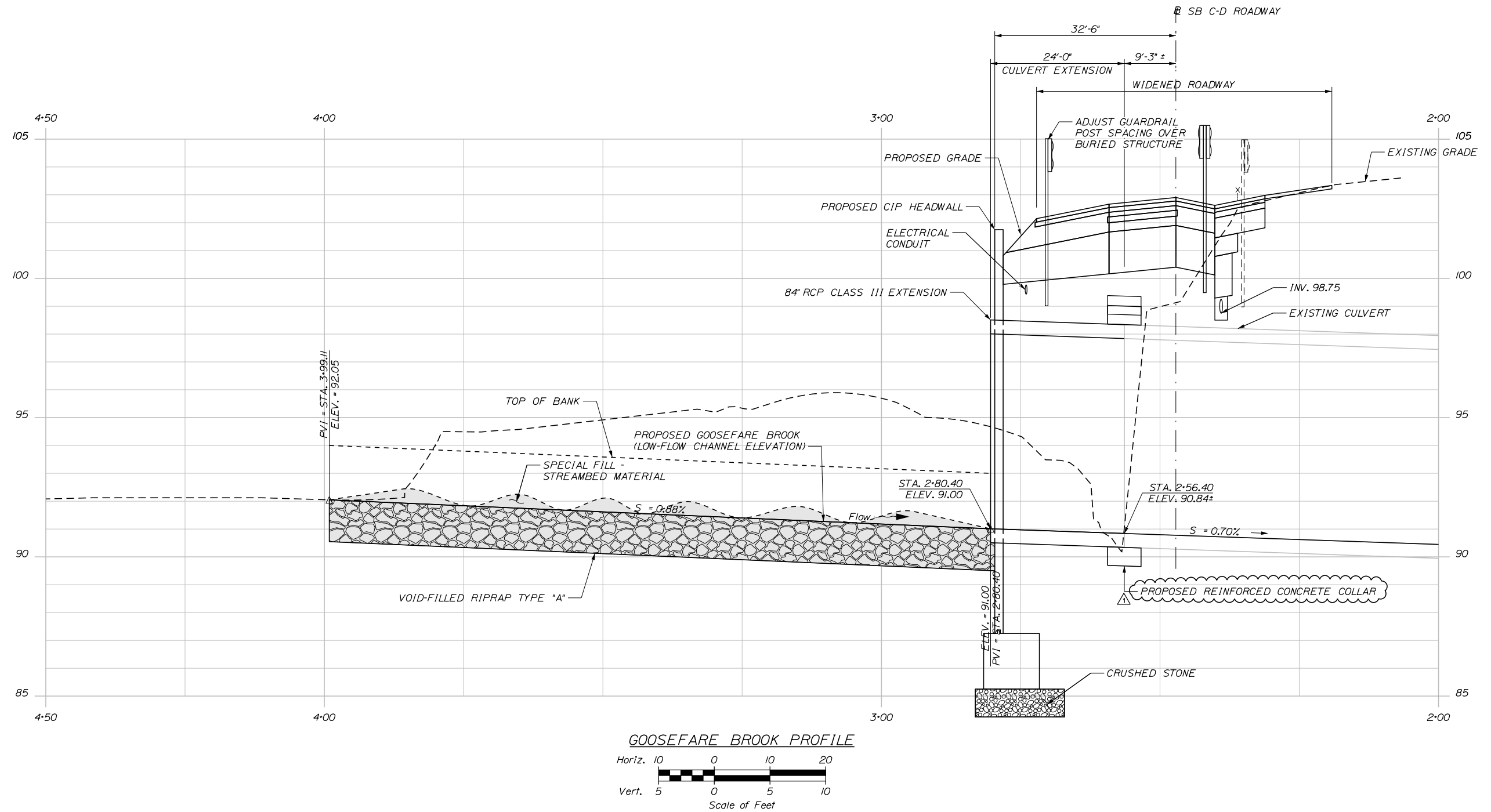
MTA PROJECT MANAGER: RYAN BARNES, PE, CPESC

INTERCHANGE IMPROVEMENTS
SACO (EXITS 35 & 36)
GOOSEFARE BROOK CULVERT EXTENSION
GENERAL PLAN

SHEET NUMBER: GB-02
601 OF 735

CONTRACT: 2022.07

Date: 11/4/2022



Filename: ...Goosefare_Brook_03_A2.dgn

Contract 2022.07
Addendum No. 2
Page 41 of 42

Scale: **AS NOTED**

No.	Revision	By	Date
1	ADDED REINFORCED CONCRETE COLLAR	JRH	11/22

Designed by:

Stantec

CONSULTANT PROJECT MANAGER: LAUREN MEEK, P.E.

	By	Date	Checked	By	Date
Designed	SJW	10\22		TWM	10\22
Drawn	SJW	10\22	In Charge of	LEM	10\22

STANTEC CONSULTING SERVICES INC.
2211 CONGRESS STREET SUITE 380
PORTLAND, ME 04102
TEL (207) 887-3448
FAX (207) 883-3376

MAINE TURNPIKE

THE GOLD STAR MEMORIAL HIGHWAY

MTA PROJECT MANAGER: RYAN BARNES, PE, CPESC

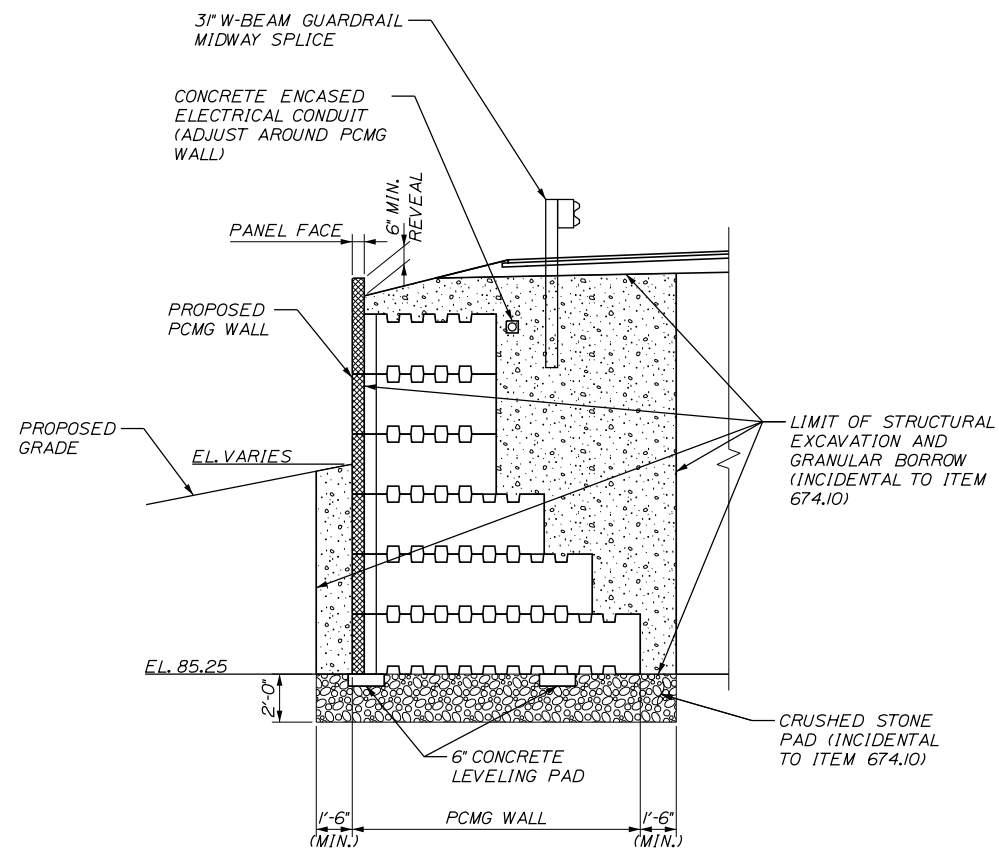
INTERCHANGE IMPROVEMENTS
SACO (EXITS 35 & 36)
GOOSEFARE BROOK CULVERT EXTENSION
DETAILS

SHEET NUMBER: GB-04
603 OF 735

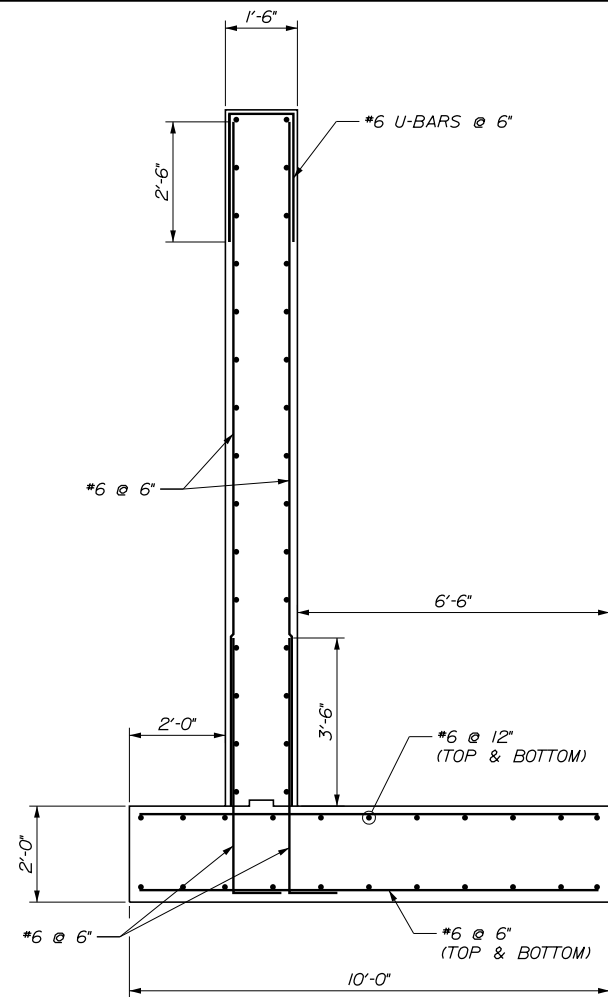
CONTRACT: 2022.07

Date: 11/4/2022

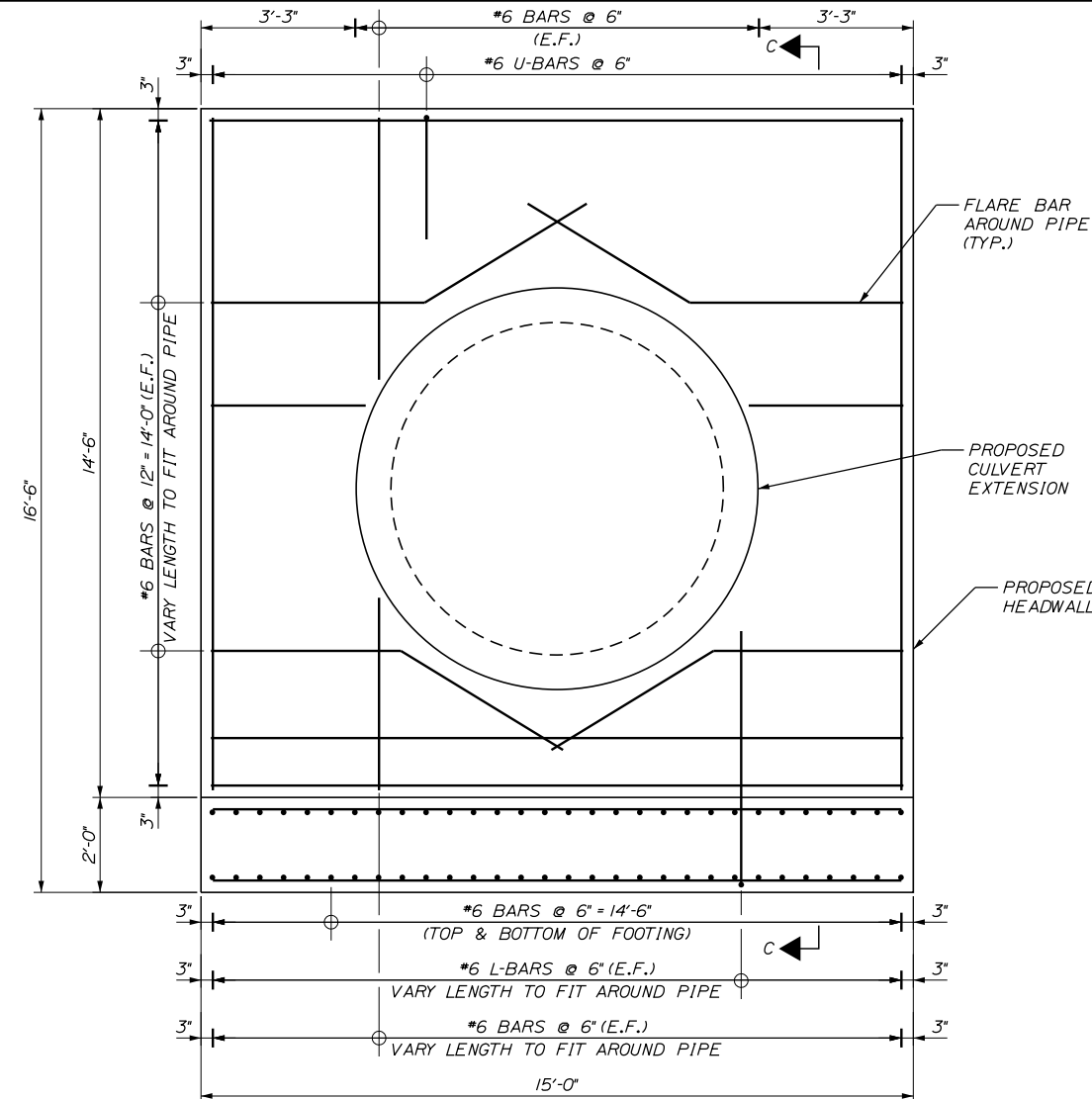
Contract 2022.07
Addendum No. 2
Page 42 of 42



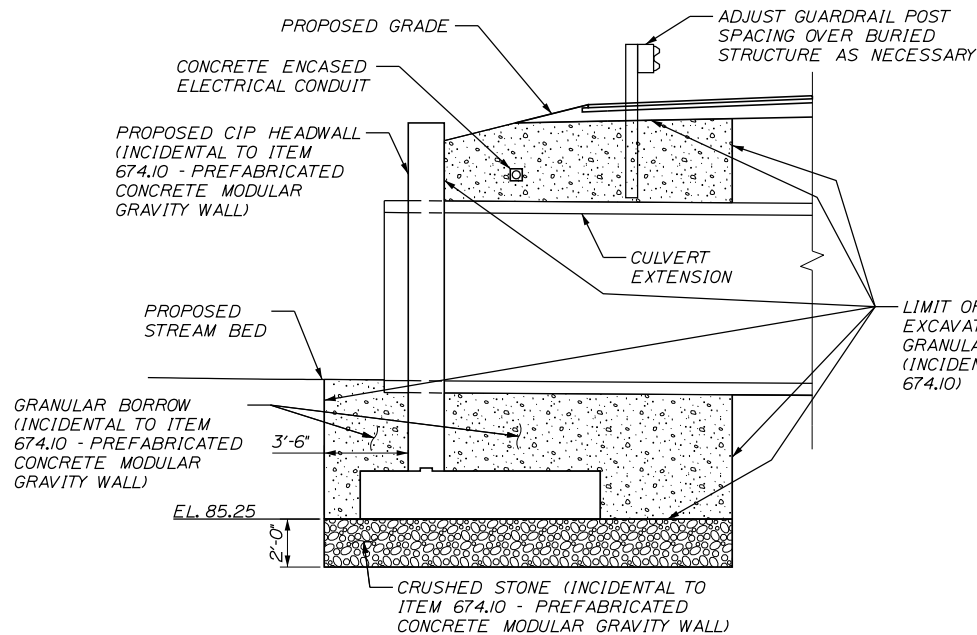
SECTION A-A
SCALE: 1/4" = 1'-0"



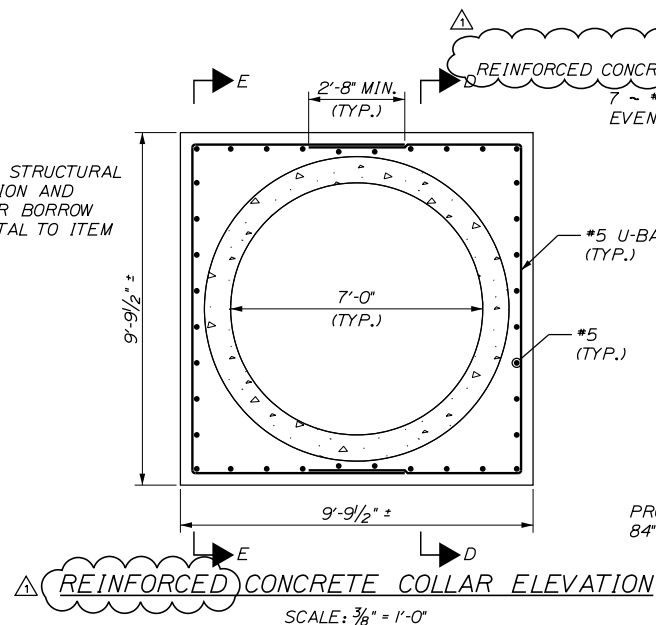
SECTION C-C
SCALE: 1/2" = 1'-0"



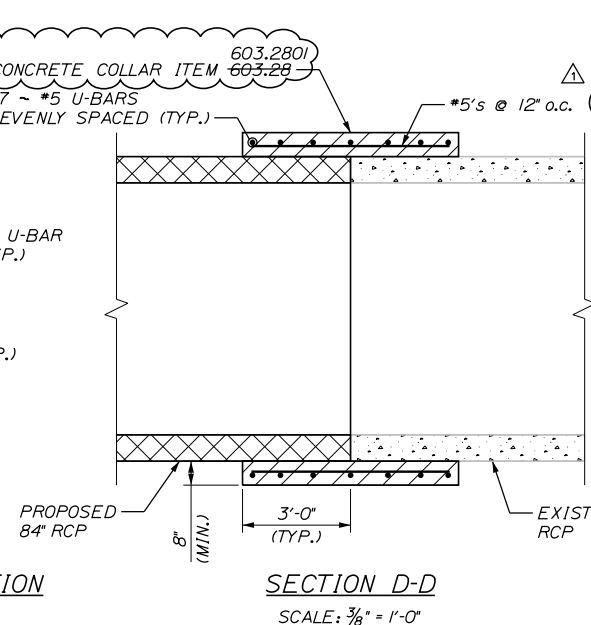
CIP HEADWALL DETAIL
SCALE: 1/2" = 1'-0"



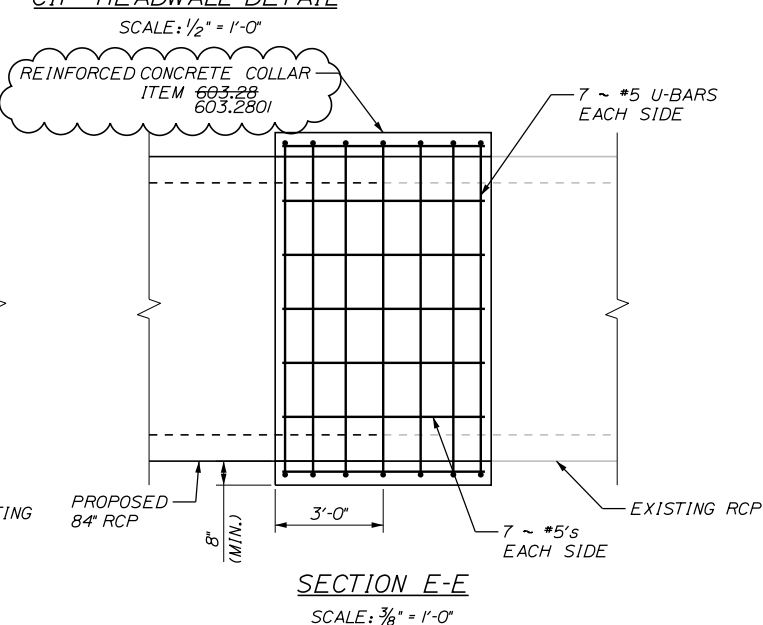
SECTION B-B
SCALE: 1/4" = 1'-0"



REINFORCED CONCRETE COLLAR ELEVATION
SCALE: 3/8" = 1'-0"



SECTION D-D
SCALE: 3/8" = 1'-0"

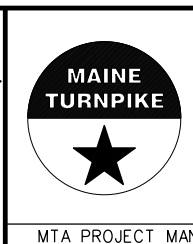


SECTION E-E
SCALE: 3/8" = 1'-0"

Scale: AS NOTED			
No.	Revision	By	Date
1	ADDED REINFORCED CONCRETE COLLAR	JRH	11/22

Designed by:			
CONSULTANT PROJECT MANAGER: LAUREN MEEK, P.E.			
Designed	SJW	10\22	Checked
Drawn	SJW	10\22	In Charge of
			TWM
			LEM
			10\22
			10\22

STANTEC CONSULTING SERVICES INC.
2211 CONGRESS STREET SUITE 380
PORTLAND, ME 04102
TEL (207) 887-3448
FAX (207) 883-3376



THE GOLD STAR
MEMORIAL HIGHWAY

INTERCHANGE IMPROVEMENTS
SACO (EXITS 35 & 36)
GOOSEFARE BROOK CULVERT EXTENSION
DETAILS

SHEET NUMBER: GB-09
CONTRACT: 2022.07
608 OF 735

MTA PROJECT MANAGER: RYAN BARNES, PE, CPESC