

MAINE TURNPIKE AUTHORITY

ADDENDUM NO. 2

CONTRACT 2019.15

GRAY TRAVEL PLAZA
FUEL SYSTEM REPLACEMENT
MILE 58.8 NB

The bid opening date is July 18, 2019 at 11am.

The following changes are made to the Proposal, Specifications and the Plans.

GENERAL

All reference to a Fire Suppression System at the Diesel Dispensing Island and/or Canopy, within the Plans and Specifications, shall be deleted; a Fire Suppression System at the Diesel Island is not part of this Contract.

PROPOSAL

Proposal Sheet P-2 through P-7 shall be revised by the following:

- Changing Item 202.202 Quantity to 80.
- Changing Item 403.207 Quantity to 220.
- Changing Item 403.208 Quantity to 130.
- Adding Item 403.213 Hot Mix Asphalt, 12.5 mm Nominal Maximum Size (Base and Intermediate Base Course)
- Changing Item 409.15 Quantity to 130.
- Changing Item 603.165 Quantity to 60.
- Added Item 603.169 15 inch Culvert Pipe Option III
- Changing Item 604.09 Quantity to 1.
- Removed Item 604.15 Manhole
- Added Item 604.248 Catch Basin Type F6
- Removed Item 605.09 6 inch Underdrain Type B
- Added Item 627.73 Temporary 6 Inch Pavement Marking Tape
- Removed Item 627.78 Temporary Pavement Marking Line White or Yellow
- Changing Item 652.35 Quantity to 140.

SPECIFICATIONS

Special Provision Section 107.4.6 Prosecution of Work shall be revised. See attached revised page SP-9.

Special Provision Section 403 Hot Mix Asphalt Pavement shall be revised with an addition of item 403.213 Hot Mix Asphalt, 12.5 mm Nominal Maximum Size (Base and Intermediate Base Course) See attached revised page SP-30.

Special Provision Section 604 Manholes, Inlets, and Catch Basins (Oil-Water Separator System) shall be revised. See attached revised page SP-46.

All reference to a Fire Suppression System at the Diesel Dispensing Island and/or Canopy, within the Plans and Specifications, shall be deleted; a Fire Suppression System at the Diesel Island is not part of this Contract.

PLANS

Plan Sheets 2, 6, 8, 9-11,13,14-16, 20 and 24 out of 32 total sheets shall be revised.

All reference to a Fire Suppression System at the Diesel Dispensing Island and/or Canopy, within the Plans and Specifications, shall be deleted; a Fire Suppression System at the Diesel Island is not part of this Contract.

QUESTIONS

- 1) Where and when are flaggers to be used?

Response: Flaggers are not necessary for the MOT Phases shown therefore Flagger Hours have been removed from the Bid Items.

- 2) Typical buried fuel piping detail, what is the pay limit of special excavation, the dashed line ends at the top of the conduit fill section, I suspect the limits goes to the bottom of the trench?

Response: The detail shall be revised to clarify pay limits.

- 3) Can tape be used to delineate the no parking zone prior to the fuel station for diesel?

Response: Yes, temporary striping shall be revised to tape.

- 4) Can you clarify the components of the oil water separator?

Response: The Oil-Water Separator consists of the oil-water separator structure, two F-basins that collect oil and water from the diesel slab area, and connecting pipes, including the connection pipe from the oil-water separator to the first downstream catch basin, CB 1.

The plans have been modified with specific labeling of these components. This modification also changes the Bid Items.

- 5) Can you clarify the pavement layers and Bid Items?

Response:

- Pavement Bid Items and Quantities have been updated to include the 403.213 pay item.

- 6) We could not find elevations of the dispenser pads or the tank pads on the plans. These elevations control the depth of the tank needed for the estimates.

Response: Additional grading and spot elevation detail is provided for the diesel dispensing slab and the portion of the perimeter road that will be excavated for tank removal and replacement.

- 7) Sheet S-8, should this be Epoxy Rebar?

Response: Yes, this shall be clarified to note epoxy rebar.

- 8) Where does the MTA require any unused granite curb be stockpiled?

Response: Unused granite curb shall become the property of the contractor. Plan notes shall be revised.

- 9) We're assuming there are only (2)-diesel dispensers under the diesel canopy and no gasoline dispensers like Kennebunk's and Gardiner. Is this correct?

Response: The diesel island will have two diesel dispensers, operational from both sides; there will be no gasoline dispensers.

- 10) Per HNTB drawing 26 of 32, there appears to be no diesel dispenser under the gasoline canopy unlike the Kennebunk's and Gardiner. Is this correct?

Response: There will be no diesel dispenser at the gasoline dispensing islands; only gasoline dispensers.

- 11) Diesel canopy fire system: The State Fire Marshall and NFPA do not require a fire system over diesel dispensers. Is it required by the MTA?

Response: All reference to a Fire Suppression System at the Diesel Dispensing Island and/or Canopy, within the Plans and Specifications, shall be deleted; a Fire Suppression System at the Diesel Island is not part of this Contract.

ATTACHMENTS

- Proposal Sheets P-2 through P-7 (6 pages)
- Special Provision 107.4.6 (Page SP-9 Revised) (1 pages)
- Special Provision 403 (Page SP-30 Revised) (1 pages)
- Special Provision 604 (Page SP-46 Revised) (1 page)
- Plan Sheet 2, 6, 8, 9-11,13,14,15,16,20 and 24 out of 32 (12 page)

Notes: The above items shall be considered as part of the bid submittal.

The total number of pages included with this addendum is twenty-five (25).

All bidders are requested to acknowledge the receipt of the Addendum No. 2 by signing below and faxing this sheet to Nathaniel Carll, Purchasing Department, Maine Turnpike Authority at 207-871-7739. Bidders are also required to acknowledge receipt of this Addendum No. 2 on Page P-8 of the bid package.

Business Name

Print Name and Title

Signature

Date

July 16, 2019

Very truly yours,

MAINE TURNPIKE AUTHORITY

Nathaniel Carll
Purchasing Department
Maine Turnpike Authority

**SCHEDULE OF BID PRICES
CONTRACT NO. 2019.15
Fuel System Replacement
Gray Service Plaza
Mile 58.8**

Item No	Item Description	Units	Approx. Quantities	Unit Prices in Numbers		Bid Amount in Numbers	
				Dollars	Cents	Dollars	Cents
202.17	Removing Existing Structural Concrete	Lump Sum	1				
202.202	Removing Pavement Surface	Square Yard	80				
203.20	Common Excavation	Cubic Yard	340				
203.2312	Health and Safety Plan	Lump Sum	1				
203.2333	Disposal/Treatment of Special Excavation	Ton	535				
203.2334	Disposal/Treatment of Contaminated Groundwater	Gallon	300,000				
206.061	Structural Earth Excavation - Drainage Minor Structures Below Grade	Cubic Yard	25				
304.10	Aggregate Subbase Course - Gravel	Cubic Yard	450				
304.14	Aggregate Base Course - Type A	Cubic Yard	90				
403.207	Hot Mix Asphalt, 19.0 mm Nominal Maximum Size	Ton	220				
403.208	Hot Mix Asphalt, 12.5 mm Nominal Maximum Size	Ton	130				

CARRIED FORWARD:

Item No	Item Description	Units	Approx. Quantities	Unit Prices in Numbers		Bid Amount in Numbers	
				Dollars	Cents	Dollars	Cents
BROUGHT FORWARD:							
403.213	Hot Mix Asphalt, 12.5 mm Nominal Maximum Size (Base and Intermediate Base Course)	Ton	130				
409.15	Bituminous Tack Coat, Applied	Gallon	130				
419.30	Sawing Bituminous Pavement	Linear Foot	1,110				
502.701	Concrete Gas Island and Slab	Cubic Yard	74				
502.702	Concrete Diesel Island and Slab	Cubic Yard	37				
502.703	Concrete Fuel Tank Slab	Cubic Yard	39				
503.14	Epoxy-Coated Reinforcing Steel, Fabricated and Delivered	Pound	12,200				
503.15	Epoxy-Coated Reinforcing Steel, Placing	Pound	12,200				
524.30	Temporary Structural Support	Each	1				
526.306	Temporary Concrete Barrier, Type I - Supplied by Authority (500 LF)	Lump Sum	1				
603.165	15 Inch Reinforced Concrete Pipe - Class III	Linear Foot	60				
603.169	15 Inch Culvert Pipe Option III	Linear Foot	300				

CARRIED FORWARD:

Item No	Item Description	Units	Approx. Quantities	Unit Prices in Numbers		Bid Amount in Numbers	
				Dollars	Cents	Dollars	Cents
BROUGHT FORWARD:							
604.09	Catch Basin Type B1	Each	1				
604.248	Catch Basin Type F6	Each	1				
604.30	Oil-water Separator	Each	1				
606.265	Terminal End - single rail-Galvanized steel	Each	4				
606.356	Underdrain Delineator Post	Each	3				
606.3605	Guardrail Remove and Reset	Linear Foot	187.5				
607.18	6 Foot Chain Link Safety Fence	Linear Foot	500				
609.31	Curb Type 3	Linear Foot	120				
610.08	Plain Riprap	Cubic Yard	9				
613.319	Erosion Control Blanket	Square Yard	18				
615.07	Loam	Cubic Yard	80				
618.13	Seeding Method Number 1	Unit	5				

CARRIED FORWARD:

Item No	Item Description	Units	Approx. Quantities	Unit Prices in Numbers		Bid Amount in Numbers	
				Dollars	Cents	Dollars	Cents
BROUGHT FORWARD:							
619.1201	Mulch - Plan Quantity	Unit	5				
619.1202	Temporary Mulch	Lump Sum	1				
622.10	Transplanting Shrub	Each	13				
626.13	18" X 12" X 18" Quazite Junction Box	Each	1				
626.22	Non-Metallic Conduit	Linear Foot	70				
626.32	24 Inch Diameter Foundation	Each	2				
626.36	Remove or Modify Concrete Foundation	Each	2				
627.73	Temporary 6 Inch Pavement Marking Tape	Linear Foot	840				
627.731	Temporary 6 Inch Black Pavement Marking Tape	Linear Foot	100				
627.733	4" White or Yellow Painted Pavement Marking Line	Linear Foot	650				
629.05	Hand Labor, Straight Time	Man Hour	20				
631.12	All Purpose Excavator (including operator)	Hour	20				

CARRIED FORWARD:

Item No	Item Description	Units	Approx. Quantities	Unit Prices in Numbers		Bid Amount in Numbers	
				Dollars	Cents	Dollars	Cents
BROUGHT FORWARD:							
631.172	Truck Large (including operator)	Hour	40				
631.221	Small Front End Loader (including operator)	Hour	20				
631.32	Culvert Cleaner (including operator)	Hour	12				
631.36	Foreman	Hour	20				
634.208	Remove and Reset Light Standards	Each	2				
634.23	Temporary Lighting	Lump Sum	1				
639.19	Field Office, Type B	Each	1				
645.109	Remove and Reset Sign	Each	1				
652.33	Drum	Each	70				
652.34	Cones	Each	25				
652.35	Construction Signs	Square Foot	140				
652.361	Maintenance of Traffic Control Devices	Lump Sum	1				

CARRIED FORWARD:

Item No	Item Description	Units	Approx. Quantities	Unit Prices in Numbers		Bid Amount in Numbers	
				Dollars	Cents	Dollars	Cents
BROUGHT FORWARD:							
652.41	Portable Changeable Message Sign	Each	1				
655.101	#6 AWG Wire	Linear Foot	180				
655.11	#10 AWG Wire	Linear Foot	90				
656.50	Baled Hay, in place	Each	12				
656.632	30 Inch Temporary Silt Fence	Linear Foot	280				
659.10	Mobilization	Lump Sum	1				
800.01	Removal of Underground Tanks (Gasoline and Diesel)	Lump Sum	1				
800.02	Underground Tank Installation (Gasoline and Diesel)	Lump Sum	1				
800.03	Aboveground Diesel Tank Installation	Lump Sum	1				
800.04	Aboveground Gasoline Tank Installation	Lump Sum	1				
800.50	New Canopy (Diesel)	Lump Sum	1				
TOTAL:							

107.4.6 Prosecution of Work

The Authority's fuel operator is responsible for removing the existing gas and diesel dispensers. The Contractor shall provide a minimum of five days' notice to the Resident of when the dispensers need to be removed. The fuel operator shall have five working days to remove dispensers.

The Authority's fuel operator shall operate the aboveground storage tanks. Contractor shall provide Resident with five working days' notice of when the aboveground storage tanks will be operational.

The contractor shall plan for and provide access to the travel plaza and temporary fuel systems for delivery vehicles (food, supplies, gas, diesel, maintenance, etc.).

The following is a list of major milestone activities required:

- Pick up, delivery and install of owner purchased above ground gas and diesel storage tanks, protective barrier, point of sale, and temporary lighting
- Install temporary kiosk (supplied by the Authority's fuel operator) including providing power and communication protective barrier and temporary lighting
- Decommission (including but not limited to all systems disconnected, lines and tanks drained and purged and prepped for removal and disposal) and remove underground gas and diesel tanks
- Submit 90% and 100% complete Fuel System plans, including but not limited to fuel tanks, piping, electrical, communication, fire suppression, lighting, and all other components required for a fully function fuel system. These submittals are required. They will be reviewed by MTA. Construction shall not proceed without approval of the MTA.
- Take receipt of and install owner purchased underground gas and diesel tanks
- Take receipt of and install vendor supplied gas and diesel dispensers
- Design and install of diesel canopy

SPECIAL PROVISIONSECTION 403HOT MIX ASPHALT PAVEMENT

Course	HMA Grading	Item Number	Total Thickness	No. of Layers	Complimentary Notes
--------	-------------	-------------	-----------------	---------------	---------------------

Service Plaza- Full Depth Construction

Intermediate	12.5mm	403.213	1.5"	1	B,E,J,L,N
Base	19.0mm	403.207	2.5"	1	B,E,J,L,N
Surface	12.5 mm	403.208	1.5	1	B,E,J,L,N

COMPLEMENTARY NOTES

- A. The required PGAB for this mixture shall be **64E-28**.
- B. The required PGAB for this mixture shall be **64-28**.
- C. A maximum of 15 percent RAP may be used.
- D. RAP may not be used.
- E. The Maine DOT will conduct the job mix verification. The aggregate qualities shall meet the design traffic level of 3 to <10 million ESALS for mix placed under this contract. The design verification, Quality Control, and Acceptance tests for this mix will be performed at **75 gyrations**. (N design) Minimum and Maximum PGAB content shall not apply.
- F. The MTA will conduct the job mix verification. The aggregate qualities shall meet the design traffic level of 10 to <30 million ESALS for mix placed under this contract. The design verification, Quality Control, and Acceptance tests for this mix will be performed at **75 gyrations**. (N design)
- G. A material transfer vehicle (MTV) shall be used for the placement of Hot Mix Asphalt wearing surface on all roadways including acceleration and deceleration lanes and all ramps.
- H. Joints shall be constructed as the “notched wedge” type in accordance with Subsection 401.17.
- I. Joint density will be measured in accordance with Subsection 401.165.
- J. Tack coat shall be applied between all layers of pavement at a rate of 0.04 G/SY.
- K. PGAB shall conform to the provisions of 403.02 – Polymer Modified PGAB for HMA
- L. The contractor shall furnish a quality control technician equipped with an approved densometer to ensure density requirements are met.
- M. Hydrated Lime shall be incorporated into the mixture.
- N. No vehicular loads shall be permitted on newly completed pavement until adequate stability has been attained and the material has cooled sufficiently to prevent distortion or loss of fines. The newly paved area may be opened to traffic after the internal temperature of the pavement has cooled to 120° F. The Resident will test the internal temperature of the pavement and shall be the sole judge as to the opening to traffic. The period of time before opening to traffic may be extended at the discretion of the Resident. The lane closure may not be removed until the internal temperature has cooled to 120° F.

SPECIAL PROVISION

SECTION 604

MANHOLES, INLETS, AND CATCH BASINS

(Oil-Water Separator System)

604.01 Description

This work shall include furnishing and installing an oil-water separator system. The oil-water separator system shall consist of a precast oil-water separator structure, including a swirl chamber, baffles, manways and covers for access and maintenance, design and shop drawing submittal(s). The system shown on the plans is for informational purposes only. The limits of the oil-water separator system will be from the manhole connecting to the upstream drainage system to the catch basin connecting to the downstream drainage system.

The oil-water separator system shall tie into the existing upstream and downstream plaza drainage system as shown on the plans.

The work shall also include design of the proposed drainage system to include connections to the existing drainage system as required, all testing and all other work necessary to complete the construction, all in accordance with these Specifications and as shown on the Plans or as directed by the Resident.

604.02 Materials

The following sentences are added:

Elastomeric sealer shall be Sikaflex 1a as manufactured by Sika or an approved equal.

Class AAA concrete shall conform to Subsection 502.05; except that the minimum cement factor shall be 750 pounds per cubic yard and the coarse aggregate size shall conform to ASTM C33 Grading 7.

The third paragraph should be deleted and replaced with:

Catch Basin Frames and Grates shall be as outlined below and be manufactured by EJ Company of Brockton, Massachusetts or an approved equal and shall meet or exceed the AASHTO M306 Loading Requirements.

Catch Basin Frames shall be manufactured by EJ Company of Brockton, Massachusetts (or an approved equal) with the following product numbers:

5521Z - 8 Inch Frame Product Number 00552111

5546Z – 6 Inch Frame Product Number 00554611

Date: 7/15/2019

ITEM NO.	ITEM DESCRIPTION	UNIT	TOTAL QUANTITY
202.17	Removing Existing Structural Concrete	LS	1
202.202	Removing Pavement Surface	SY	80
203.20	Common Excavation	CY	340
203.2312	Health and Safety Plan	LS	1
203.2333	Disposal/Treatment of Special Excavation	TON	535
203.2334	Disposal/Treatment of Contaminated Groundwater	GAL	300,000
206.061	Structural Earth Excavation - Drainage Minor Structures Below Grade	CY	25
304.10	Aggregate Subbase Course - Gravel	CY	450
304.14	Aggregate Base Course - Type A	CY	90
403.207	Hot Mix Asphalt, 19.0 mm Nominal Maximum Size	Ton	220
403.208	Hot Mix Asphalt, 12.5 mm Nominal Maximum Size	Ton	130
403.213	Hot Mix Asphalt, 12.5 mm Nominal Maximum Size (Base and Intermediate Base Course)	Ton	130
409.15	Bituminous Tack Coat, Applied	Gal	130
419.30	Sawing Bituminous Pavement	LF	1,110
502.701	Concrete Gas Island and Slab	CY	74
502.702	Concrete Diesel Island and Slab	CY	37
502.703	Concrete Fuel Tank Slab	CY	39
503.14	Epoxy-Coated Reinforcing Steel, Fabricated and Delivered	LB	12,200
503.15	Epoxy-Coated Reinforcing Steel, Placing	LB	12,200
524.30	Temporary Structural Support	EA	1
526.306	Temporary Concrete Barrier, Type I - Supplied by Authority (500 LF)	LS	1
603.165	15 Inch Reinforced Concrete Pipe - Class III	LF	60
603.169	15 Inch Culvert Pipe Option III	LF	300
604.09	Catch Basin Type B1	EA	1
604.248	Catch Basin Type F6	EA	1
604.30	Oil-water Separator	EA	1
606.265	Terminal End - single rail- Galvanized steel	EA	4
606.356	Underdrain Delineator Post	EA	3
606.3605	Guardrail Remove and Reset	LF	187.5
607.18	6 Foot Chain Link Safety Fence	LF	500
609.31	Curb Type 3	LF	120
610.08	Plain Riprap	CY	9
613.319	Erosion Control Blanket	SY	18
615.07	Loam	CY	80
618.13	Seeding Method Number 1	Unit	5
619.1201	Mulch - Plan Quantity	Unit	5
619.1202	Temporary Mulch	LS	1
622.10	Transplanting Shrub	EA	13
626.13	18" X 12" X 18" Quazite Junction Box	EA	1
626.22	Non-Metallic Conduit	LF	70
626.32	24 Inch Diameter Foundation	EA	2
626.36	Remove or Modify Concrete Foundation	EA	2
627.73	Temporary 6 Inch Pavement Marking Tape	LF	840
627.731	Temporary 6 Inch Black Pavement Marking Tape	LF	100
627.733	4" White or Yellow Painted Pavement Marking Line	LF	650
629.05	Hand Labor, Straight Time	MH	20

ITEM NO.	ITEM DESCRIPTION	UNIT	TOTAL QUANTITY
631.12	All Purpose Excavator (including operator)	HR	20
631.172	Truck Large (including operator)	HR	40
631.221	Small Front End Loader (including operator)	HR	20
631.32	Culvert Cleaner (including operator)	HR	12
631.36	Foreman	HR	20
634.208	Remove and Reset Light Standards	EA	2
634.23	Temporary Lighting	LS	1
639.19	Field Office, Type B	EA	1
645.109	Remove and Reset Sign	EA	1
652.33	Drum	EA	70
652.34	Cones	EA	25
652.35	Construction Signs	SF	140
652.361	Maintenance of Traffic Control Devices	LS	1
652.41	Portable Changeable Message Sign	EA	1
655.101	#6 AWG Wire	LF	180
655.11	#10 AWG Wire	LF	90
656.50	Baled Hay, in place	EA	12
656.632	30 Inch Temporary Silt Fence	LF	280
659.10	Mobilization	LS	1
800.01	Removal of Underground Tanks (Gasoline and Diesel)	LS	1
800.02	Underground Tank Installation (Gasoline and Diesel)	LS	1
800.03	Aboveground Diesel Tank Installation	LS	1
800.04	Aboveground Gasoline Tank Installation	LS	1
800.50	New Canopy (Diesel)	LS	1

Filename: 002_Estimate Quantities.dgn

Scale:			
No.	Revision	By	Date
1	REVISED QUANTITIES	DAM	7/19

Designed by:			
HNTB			
CONSULTANT PROJECT MANAGER: Dale A. Mitchell, P.E.			
	By	Date	
Designed	DSS	4\19\2019	Checked DAM 4\19\2019
Drawn	WAD	4\19\2019	In Charge of RAL 4\19\2019

HNTB CORPORATION
 340 County Road, Suite 6-C
 Westbrook, ME 04092
 TEL (207) 774-5155
 FAX (207) 228-0909

THE GOLD STAR
MEMORIAL HIGHWAY

MTA PROJECT MANAGER: Ralph C. Norwood, IV, P.E., P.T.O.E.

GRAY SERVICE PLAZA
FUEL SYSTEM REPLACEMENT

ESTIMATED QUANTITIES

CONTRACT: 2019.15

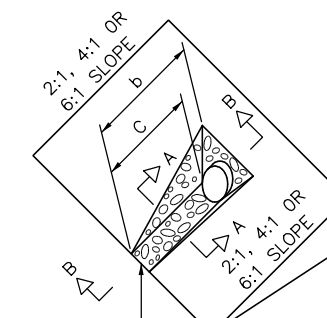
SHEET NUMBER: EQ-01

Page 14 of 25

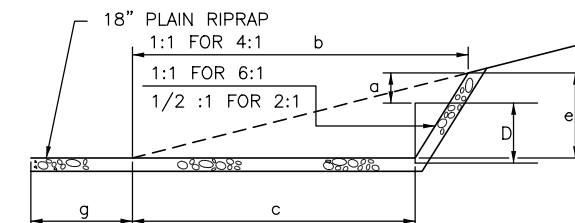
2 OF 23

DIMENSIONS FOR SLOPE OF 2:1

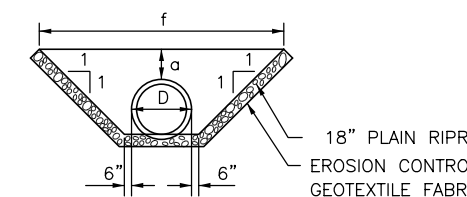
D	a (FT)	b (FT)	c (FT)	e (FT)	f (FT)	g (FT)	STONE DEPTH (FT)	STONE (CY)
12"	1.00	4.00	3.00	2.00	6.00	1.00	1.50	1.30
15"	1.00	4.50	3.37	2.25	6.75	1.63	1.50	1.70
18"	1.00	5.00	3.75	2.50	7.50	2.25	1.50	2.09
21"	1.00	5.50	4.13	2.75	8.25	2.88	1.50	2.58
24"	1.00	6.00	4.50	3.00	9.00	3.50	1.50	3.12
30"	1.00	7.00	5.25	3.50	10.50	4.75	1.50	4.33
36"	1.00	8.00	6.00	4.00	12.00	6.00	1.50	5.75
42"	1.00	9.00	6.75	4.50	13.50	7.25	1.50	7.37
48"	1.00	10.00	7.50	5.00	15.00	8.50	1.50	9.18
54"	1.00	11.00	8.25	5.50	16.50	9.75	1.50	11.19
60"	1.00	12.00	9.00	6.00	18.00	11.00	1.50	13.40
66"	1.00	13.00	9.75	6.50	19.50	12.25	1.50	15.81
72"	1.00	14.00	10.50	7.00	21.00	13.50	1.50	18.41
84"	1.00	16.00	12.00	8.00	24.00	16.00	1.50	24.22



PLAIN RIPRAP (ITEM 610.08)



SECTION B-B

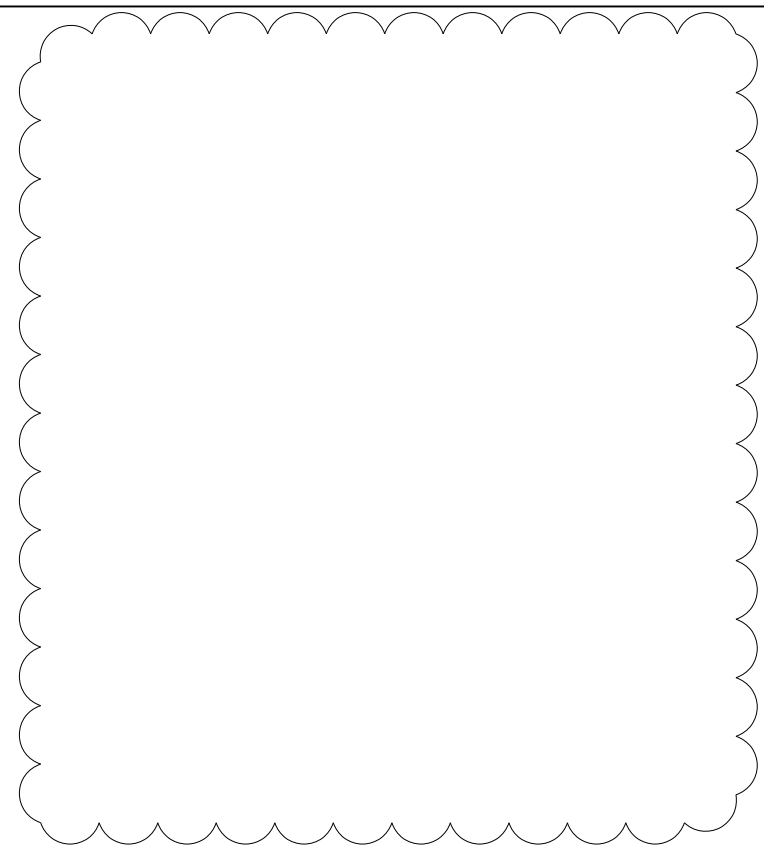


SECTION A-A

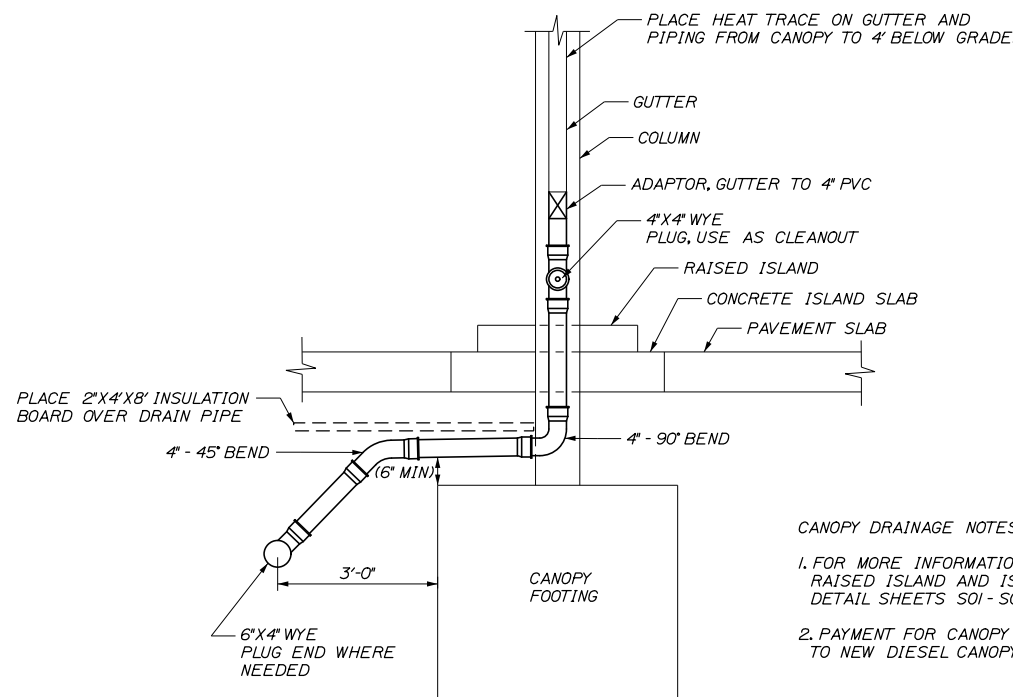
ROADWAY CULVERT END SLOPE TREATMENT

CULVERT NOTES:

1. THE DIMENSIONS SHOWN ARE APPROXIMATE AND MAY BE MODIFIED BY THE RESIDENT.
2. STONE QUANTITIES ARE FOR ONE END OF THE PIPE.



Date: 7/15/2019



CANOPY DRAINAGE DETAIL
N.T.S.

CANOPY DRAINAGE NOTES:

1. FOR MORE INFORMATION ON FOOTING, PAVEMENT SLAB, RAISED ISLAND AND ISLAND SLAB SEE STRUCTURAL DETAIL SHEETS S01 - S04
2. PAYMENT FOR CANOPY DRAINAGE SHALL BE INCIDENTAL TO NEW DIESEL CANOPY INSTALLATION.

Scale: NOT TO SCALE

No.	Revision	By	Date
1	REMOVED DIVERSION STRUCTURE	DAM	7/19

Designed by:

HNTB

CONSULTANT PROJECT MANAGER: Dale A. Mitchell, P.E.			
By	Date	By	Date
Designed	DSS 4\19\2019	Checked	DAM 4\19\2019
Drawn	WAD 4\19\2019	In Charge of	RAL 4\19\2019

HNTB CORPORATION
340 County Road, Suite 6-C
Westbrook, ME 04092
TEL (207) 774-5155
FAX (207) 228-0909

MAINE TURNPIKE

THE GOLD STAR MEMORIAL HIGHWAY

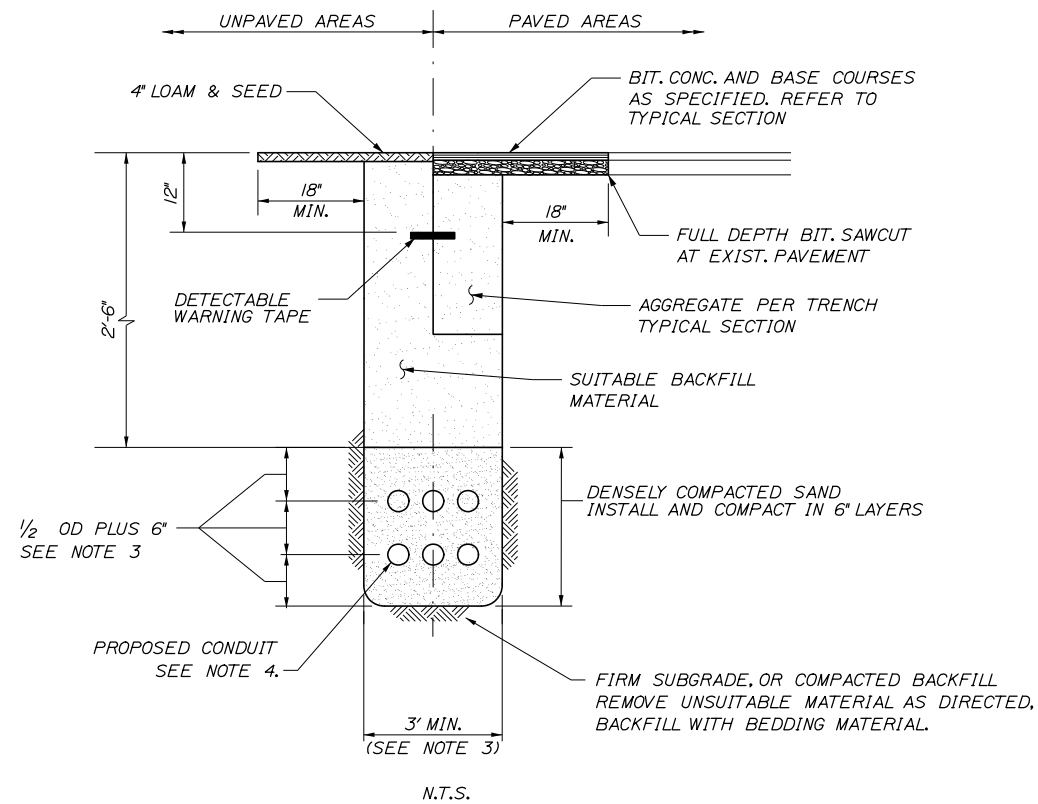
MTA PROJECT MANAGER: Ralph C. Norwood, IV, P.E., P.T.O.E.

GRAY SERVICE PLAZA
FUEL SYSTEM REPLACEMENT
DRAINAGE DETAILS

SHEET NUMBER: MD-01
Page 15 of 25

CONTRACT: 2019.15
6 OF 25

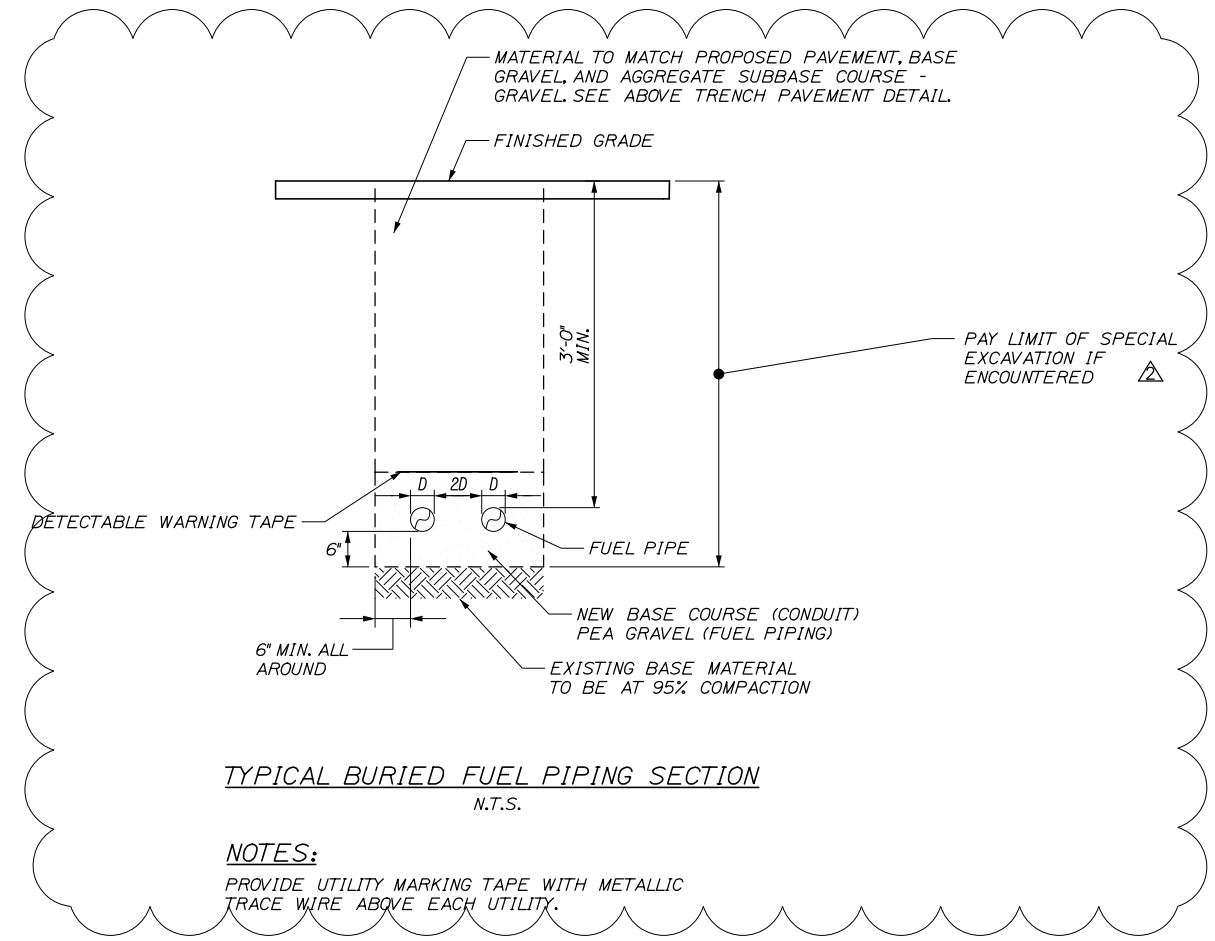
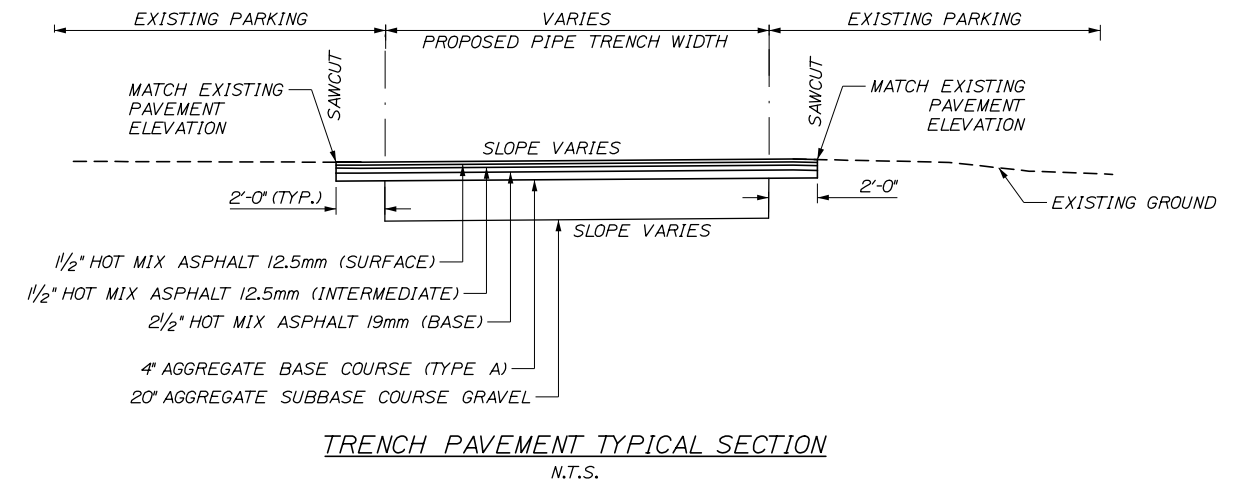
Date: 7/15/2019



STANDARD PIPE/CONDUIT TRENCH DETAIL

NOTES:

1. BEDDING SHALL BE COMPACTED TO A MINIMUM 95% STANDARD PROCTOR DENSITY. USE HAND TAMPERS OR VIBRATORY COMPACTORS.
2. CONTRACTOR SHALL SHORE TRENCH SIDES WHEN REQUIRED OR AS DIRECTED BY THE RESIDENT.
3. CONTRACTOR SHALL COMPLY WITH MINIMUM DISTANCES, BOTH HORIZONTALLY AND VERTICALLY, BETWEEN UTILITIES PER APPLICABLE CODE REQUIREMENTS. DIMENSIONS ABOVE ARE MINIMUMS.
4. CONDUIT SHALL BE SCHEDULE 80 OR RMC UNDER PAVEMENT. IF CONTRACTOR USES OTHER CONDUIT TYPE, 4" CONCRETE COVER OVER TRENCH WIDTH IS REQUIRED.
5. MINIMUM OF 6" BETWEEN PIPES OR CONDUITS TO TRENCH WALLS IS REQUIRED.



Filename: 008_Trench_Dtl.dgn

Scale: NOT TO SCALE

No.	Revision	By	Date
1	CLARIFIED PAY LIMITS	DAM	7/19

Designed by:

HNTB

CONSULTANT PROJECT MANAGER: Dale A. Mitchell, P.E.

	By	Date	By	Date	
Designed	DSS	4\19\2019	Checked	DAM	4\19\2019
Drawn	WAD	4\19\2019	In Charge of	RAL	4\19\2019

HNTB CORPORATION
 340 County Road, Suite 6-C
 Westbrook, ME 04092
 TEL (207) 774-5155
 FAX (207) 228-0909

MAINE TURNPIKE

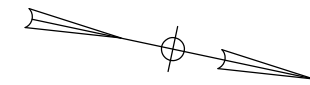
THE GOLD STAR MEMORIAL HIGHWAY

MTA PROJECT MANAGER: Ralph C. Norwood, IV, P.E., P.T.O.E.

GRAY SERVICE PLAZA
 FUEL SYSTEM REPLACEMENT
 STANDARD TRENCH DETAILS

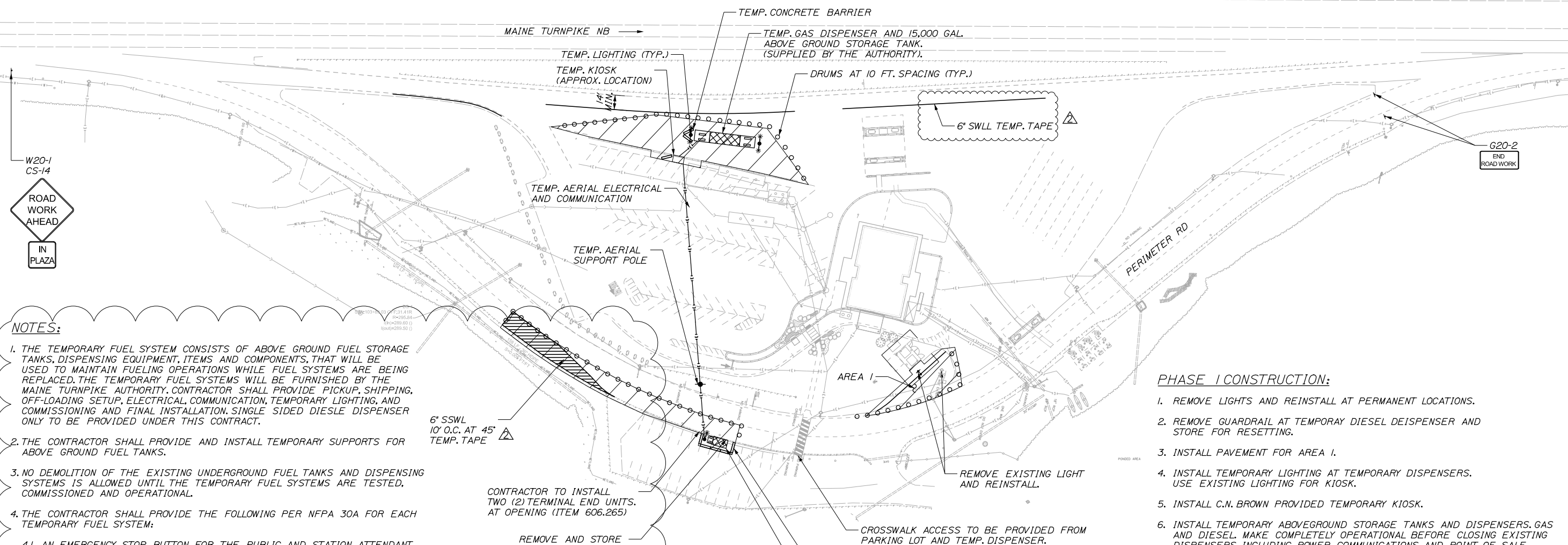
CONTRACT: 2019.15

SHEET NUMBER: TD-01
 Page 16 of 25
 8 OF 32



← MAINE TURNPIKE SB

MAINE TURNPIKE NB →



NOTES:

1. THE TEMPORARY FUEL SYSTEM CONSISTS OF ABOVE GROUND FUEL STORAGE TANKS, DISPENSING EQUIPMENT, ITEMS AND COMPONENTS, THAT WILL BE USED TO MAINTAIN FUELING OPERATIONS WHILE FUEL SYSTEMS ARE BEING REPLACED. THE TEMPORARY FUEL SYSTEMS WILL BE FURNISHED BY THE MAINE TURNPIKE AUTHORITY. CONTRACTOR SHALL PROVIDE PICKUP, SHIPPING, OFF-LOADING SETUP, ELECTRICAL, COMMUNICATION, TEMPORARY LIGHTING, AND COMMISSIONING AND FINAL INSTALLATION. SINGLE SIDED DIESEL DISPENSER ONLY TO BE PROVIDED UNDER THIS CONTRACT.
2. THE CONTRACTOR SHALL PROVIDE AND INSTALL TEMPORARY SUPPORTS FOR ABOVE GROUND FUEL TANKS.
3. NO DEMOLITION OF THE EXISTING UNDERGROUND FUEL TANKS AND DISPENSING SYSTEMS IS ALLOWED UNTIL THE TEMPORARY FUEL SYSTEMS ARE TESTED, COMMISSIONED AND OPERATIONAL.
4. THE CONTRACTOR SHALL PROVIDE THE FOLLOWING PER NFPA 30A FOR EACH TEMPORARY FUEL SYSTEM:
 - 4.1 AN EMERGENCY STOP BUTTON FOR THE PUBLIC AND STATION ATTENDANT.
 - 4.2 DRY CHEMICAL 2A:40B:C FIRE EXTINGUISHER AT EACH TEMPORARY DISPENSER.
 - 4.3 CONTRACTOR TO PROVIDE AND INSTALL SHEAR VALVES FOR EACH DISPENSER IN THE EVENT OF IMPAIRMENT.
5. THE CONTRACTOR WILL BE ALLOWED UP TO A 24-HOUR SHUTDOWN WITH THE APPROVAL OF THE MTA RESIDENT ENGINEER. FOR THE SHUTDOWN OF THE EXISTING UST SYSTEMS IN ORDER TO TEST AND COMMISSION THE ABOVE GROUND TEMPORARY SYSTEMS AND PUT THEM INTO FULL OPERATIONS. A MINIMUM 7-DAY NOTICE SHALL BE GIVEN FOR APPROVAL OF THE SHUTDOWN.
6. CONTRACTOR SHALL MAKE ACCOMMODATIONS FOR SCHEDULED SERVICE PLAZA AND FUEL STATION DELIVERIES.
7. CONTRACTOR SHALL SEE SPECIFICATIONS FOR PROSECUTION OF WORK, ADDITIONAL INFORMATION AND OTHER IMPORTANT SCHEDULE CONSTRAINTS.
8. SEE SHEET SS-01 FOR SIGN DETAILS.

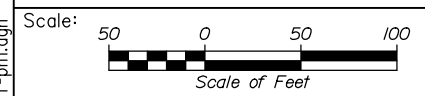
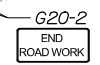
PHASE I CONSTRUCTION:

1. REMOVE LIGHTS AND REINSTALL AT PERMANENT LOCATIONS.
2. REMOVE GUARDRAIL AT TEMPORARY DIESEL DISPENSER AND STORE FOR RESETTING.
3. INSTALL PAVEMENT FOR AREA I.
4. INSTALL TEMPORARY LIGHTING AT TEMPORARY DISPENSERS. USE EXISTING LIGHTING FOR KIOSK.
5. INSTALL C.N. BROWN PROVIDED TEMPORARY KIOSK.
6. INSTALL TEMPORARY ABOVEGROUND STORAGE TANKS AND DISPENSERS. GAS AND DIESEL MAKE COMPLETELY OPERATIONAL BEFORE CLOSING EXISTING DISPENSERS, INCLUDING POWER COMMUNICATIONS, AND POINT OF SALE.

LEGEND

- WORK AREA - PHASE I
- PORTABLE CONCRETE BARRIER
- 6' CHAIN LINK SAFETY FENCE

Date: 7/15/2019



Designed by:

HNTB

No.	Revision	By	Date
1	REVISED NOTES & TEMP. PAINT	DAM	7/19

CONSULTANT PROJECT MANAGER: Dale A. Mitchell, P.E.

	By	Date	By	Date	
Designed	DSS	7/15/2019	Checked	DAM	7/15/2019
Drawn	WAD	7/15/2019	In Charge of	RAL	7/15/2019

HNTB CORPORATION
 340 County Road, Suite 6-C
 Westbrook, ME 04092
 TEL (207) 774-5155
 FAX (207) 228-0909



**THE GOLD STAR
 MEMORIAL HIGHWAY**

GRAY SERVICE PLAZA
 FUEL SYSTEM REPLACEMENT
 MAINTENANCE OF TRAFFIC
 PHASE 1

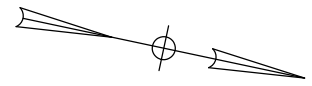
Filename: 009_MOT-ph1.dgn

MTA PROJECT MANAGER: Ralph C. Norwood, IV, P.E., P.T.O.E.

CONTRACT: 2019.15

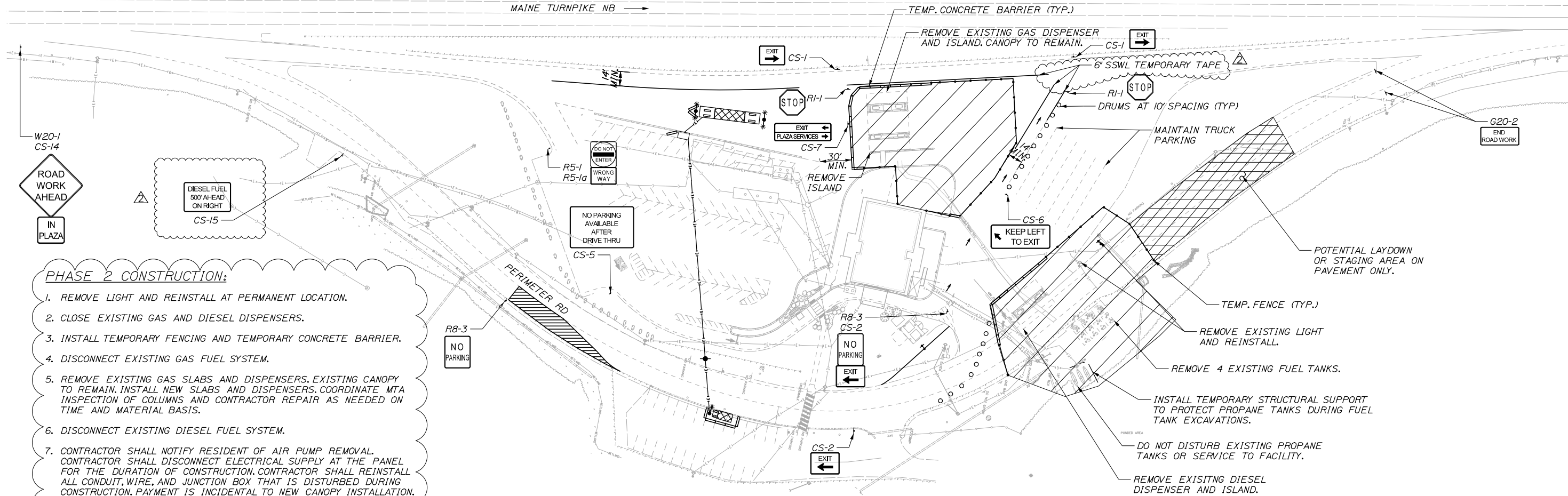
SHEET NUMBER: MOT-01
 Page 17 of 25

9 OF 23



← MAINE TURNPIKE SB

MAINE TURNPIKE NB →



PHASE 2 CONSTRUCTION:

1. REMOVE LIGHT AND REINSTALL AT PERMANENT LOCATION.
2. CLOSE EXISTING GAS AND DIESEL DISPENSERS.
3. INSTALL TEMPORARY FENCING AND TEMPORARY CONCRETE BARRIER.
4. DISCONNECT EXISTING GAS FUEL SYSTEM.
5. REMOVE EXISTING GAS SLABS AND DISPENSERS. EXISTING CANOPY TO REMAIN. INSTALL NEW SLABS AND DISPENSERS. COORDINATE MTA INSPECTION OF COLUMNS AND CONTRACTOR REPAIR AS NEEDED ON TIME AND MATERIAL BASIS.
6. DISCONNECT EXISTING DIESEL FUEL SYSTEM.
7. CONTRACTOR SHALL NOTIFY RESIDENT OF AIR PUMP REMOVAL. CONTRACTOR SHALL DISCONNECT ELECTRICAL SUPPLY AT THE PANEL FOR THE DURATION OF CONSTRUCTION. CONTRACTOR SHALL REINSTALL ALL CONDUIT, WIRE, AND JUNCTION BOX THAT IS DISTURBED DURING CONSTRUCTION. PAYMENT IS INCIDENTAL TO NEW CANOPY INSTALLATION.
8. REMOVE EXISTING DIESEL SLABS AND DISPENSERS. INSTALL NEW SLAB, CANOPY, AND DISPENSERS.
9. CONTRACTOR SHALL COORDINATE WITH RESIDENT AND C.N. BROWN FOR REMOVAL AND INSTALLATION OF DISPENSERS. C.N. BROWN WILL TAKE DELIVERY OF DISPENSERS, STORE THEM, AND PROVIDE NEW/REFURBISHED DISPENSERS FOR INSTALLATION.
10. REMOVE EXISTING RAISED ISLAND NEAR GAS DISPENSERS.
11. EXCAVATE AND REMOVE EXISTING GAS AND DIESEL FUEL TANKS. INSTALL NEW TANKS.
12. RUN ELECTRICAL SLEEVES AND/OR PIPING UNDER PERIMETER ROAD TO DIESEL DISPENSERS AND LIMIT OF WORK ZONE.
13. INSTALL FUEL TANKS PRIOR TO INSTALLING GUARDRAIL ALONG PERIMETER ROAD.

LEGEND

- WORK AREA - PHASE 2
- PORTABLE CONCRETE BARRIER
- 6' CHAIN LINK SAFETY FENCE
- POTENTIAL LAYDOWN AREA

NOTES:

1. CONTRACTOR SHALL MAKE ACCOMMODATIONS FOR SCHEDULED SERVICE PLAZA AND FUEL STATION DELIVERIES.
2. GRANITE CURB REMOVED AND NOT REUSED SHALL BECOME THE PROPERTY OF THE CONTRACTOR
3. SEE SHEET SS-01 FOR SIGN DETAILS.

Date: 7/15/2019

Scale: Scale of Feet

No.	Revision	By	Date
1	REVISED NOTES & TEMP. PAINT	DAM	7/19

Designed by:

HNTB

CONSULTANT PROJECT MANAGER: Dale A. Mitchell, P.E.			
Designed	DSS	7/15/2019	Checked
Drawn	WAD	7/15/2019	In Charge of

HNTB CORPORATION
 340 County Road, Suite 6-C
 Westbrook, ME 04092
 TEL (207) 774-5155
 FAX (207) 228-0909

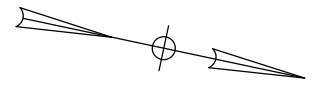
THE GOLD STAR
MEMORIAL HIGHWAY

MTA PROJECT MANAGER: Ralph C. Norwood, IV, P.E., P.T.O.E.

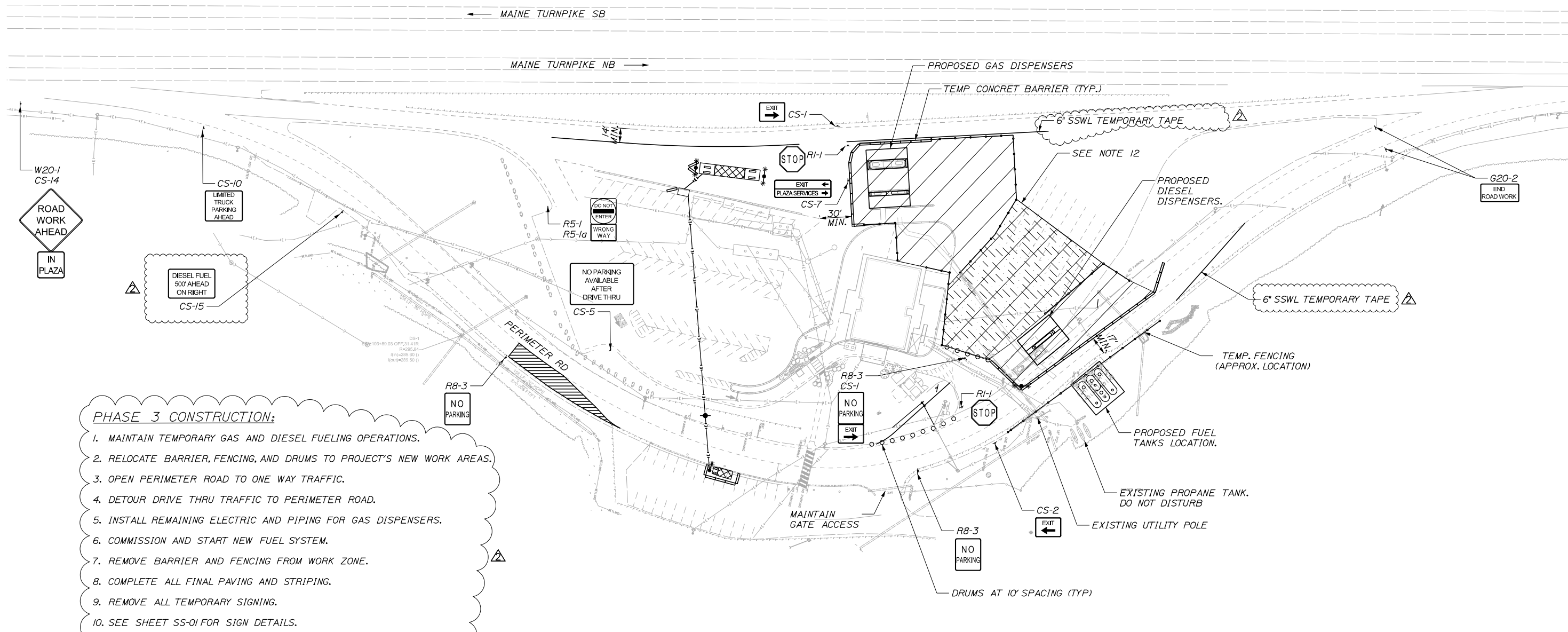
GRAY SERVICE PLAZA
FUEL SYSTEM REPLACEMENT
MAINTENANCE OF TRAFFIC
PHASE 2

CONTRACT: 2019.15

SHEET NUMBER: MOT-02
Page 18 of 25
10 OF 32

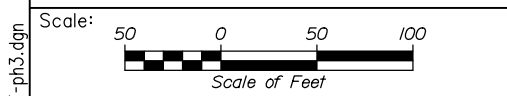


Date: 7/15/2019



- PHASE 3 CONSTRUCTION:**
- I. MAINTAIN TEMPORARY GAS AND DIESEL FUELING OPERATIONS.
 2. RELOCATE BARRIER, FENCING, AND DRUMS TO PROJECT'S NEW WORK AREAS.
 3. OPEN PERIMETER ROAD TO ONE WAY TRAFFIC.
 4. DETOUR DRIVE THRU TRAFFIC TO PERIMETER ROAD.
 5. INSTALL REMAINING ELECTRIC AND PIPING FOR GAS DISPENSERS.
 6. COMMISSION AND START NEW FUEL SYSTEM.
 7. REMOVE BARRIER AND FENCING FROM WORK ZONE.
 8. COMPLETE ALL FINAL PAVING AND STRIPING.
 9. REMOVE ALL TEMPORARY SIGNING.
 10. SEE SHEET SS-01 FOR SIGN DETAILS.
- II. RESTRICTED WORK AREA IS LIMITED TO TWO (2) WEEK MAXIMUM CLOSURE DURING PHASE 3 WORK (24 HRS PER DAY). FOR THE REMAINDER OF PHASE 3, TRUCK PARKING SHALL BE AVAILABLE FROM 7 PM TO 7 AM. CONTRACTOR MAY UTILIZE THE FULL PHASE 3 WORK ZONE 7 AM TO 7 PM.

- LEGEND**
- WORK AREA - PHASE 3
 - PORTABLE CONCRETE BARRIER
 - 6' CHAIN LINK SAFETY FENCE
 - RESTRICTED WORK AREA



Designed by:

HNTB

CONSULTANT PROJECT MANAGER: Dale A. Mitchell, P.E.			
By	Date	By	Date
Designed	DSS 7/15/2019	Checked	DAM 7/15/2019
Drawn	WAD 7/15/2019	In Charge of	RAL 7/15/2019

HNTB CORPORATION
 340 County Road, Suite 6-C
 Westbrook, ME 04092
 TEL (207) 774-5155
 FAX (207) 228-0909

THE GOLD STAR
MEMORIAL HIGHWAY

MTA PROJECT MANAGER: Ralph C. Norwood, IV, P.E., P.T.O.E.

GRAY SERVICE PLAZA
FUEL SYSTEM REPLACEMENT
MAINTENANCE OF TRAFFIC
PHASE 3

CONTRACT: 2019.15

SHEET NUMBER: MOT-03
Page 19 of 25

11 OF 32

Filename: 011_MOT-ph.3.dgn

CONSTRUCTION SIGN SUMMARY

IDENTIFICATION NUMBER	SIZE OF SIGN		TEXT	TEXT DIMENSIONS (INCHES)			NUMBER OF SIGNS REQUIRED	COLOR		AREA IN SQUARE FEET
	WIDTH	HEIGHT		LETTER HEIGHT	VERTICAL SPACING	ARROW RTE. MKR.		BACK-GROUND	LEGEND BORDER	
CS-1	30"	24"		4"C	3" 3" 11" 3"	4.5"x18"	2	ORANGE	BLACK	6.75 (13.50)
CS-2	30"	24"		4"C	3" 3" 11" 3"	4.5"x18"	2			6.75 (13.50)
CS-5	48"	36"		4"C 4"C 4"C 4"C	6" 3" 3" 3" 5"	4"x6"	1			12.00 (12.00)
CS-6	42"	18"		4"C 4"C	3.5" 3" 3.5"	4"x6"	1			5.25 (5.25)
CS-7	54"	18"		4"C 4"C	3" 4" 3"	4"x6" 4"x6"	1			6.75 (6.75)
CS-10	36"	30"		4"C 4"C 4"C 4"C	2.5" 3" 3" 3" 2.5"		1			7.50 (7.50)
CS-14	18"	18"		4"C 4"C	3.5" 3" 3.5"		1			2.25 (2.25)
CS-15	42"	30"		4"C 4"C 4"C	5" 4" 4" 5"		1			8.75 (8.75)

IDENTIFICATION NUMBER	SIZE OF SIGN		TEXT	TEXT DIMENSIONS (INCHES)			NUMBER OF SIGNS REQUIRED	COLOR		AREA IN SQUARE FEET
	WIDTH	HEIGHT		LETTER HEIGHT	VERTICAL SPACING	ARROW RTE. MKR.		BACK-GROUND	LEGEND BORDER	
TEXT DIMENSIONS SHALL CONFORM TO THE STANDARD HIGHWAY SIGNS 2004 EDITION AND 2012 SUPPLEMENT										
R1-1	36"	36"					2	RED	WHITE	9.00 (18.00)
R8-3	18"	24"					3	WHITE	RED	3.00 (9.00)
G20-2	36"	18"					2	ORANGE	BLACK	4.50 (9.00)
W20-1	48"	48"					1	ORANGE	BLACK	16.00 (16.00)
R5-1	36"	36"					1	RED	WHITE	9.00 (9.00)
R5-1a	36"	24"					1	ORANGE	BLACK	6.00 (6.00)

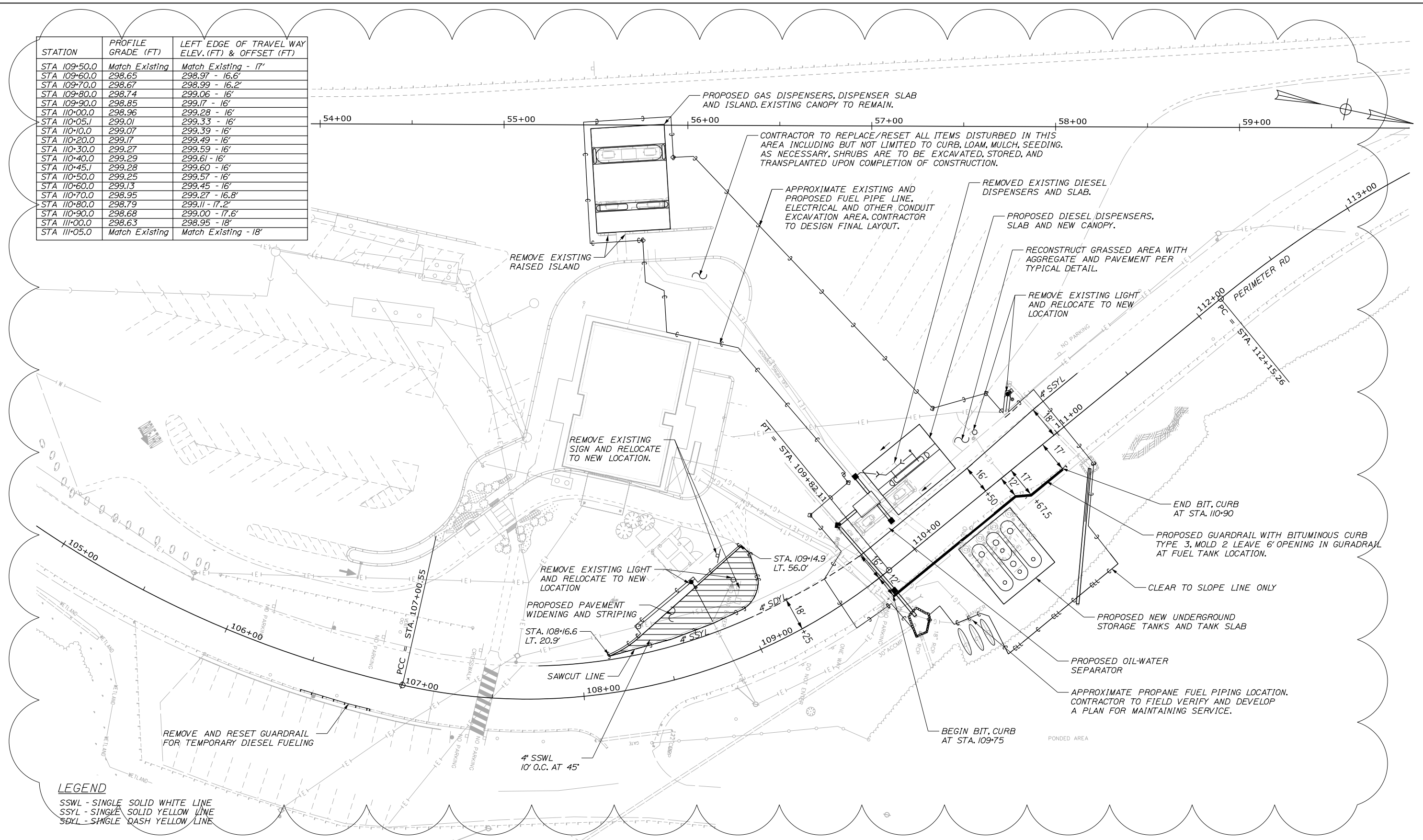
Date: 7/15/2019

Filename: 013_Sign Summary_1.dgn

Scale: NOT TO SCALE	Designed by: 	HNTB CORPORATION 340 County Road, Suite 6-C Westbrook, ME 04092 TEL (207) 774-5155 FAX (207) 228-0909		THE GOLD STAR MEMORIAL HIGHWAY	GRAY SERVICE PLAZA FUEL SYSTEM REPLACEMENT MAINTENANCE OF TRAFFIC SIGN SUMMARY																								
<table border="1" style="width: 100%; border-collapse: collapse;"> <thead> <tr> <th>No.</th> <th>Revision</th> <th>By</th> <th>Date</th> </tr> </thead> <tbody> <tr> <td>1</td> <td>REVISED SIGNING</td> <td>DAM</td> <td>7/19</td> </tr> </tbody> </table>	No.	Revision	By	Date	1	REVISED SIGNING	DAM	7/19	<table border="1" style="width: 100%; border-collapse: collapse;"> <thead> <tr> <th colspan="4">CONSULTANT PROJECT MANAGER: Dale A. Mitchell, P.E.</th> </tr> <tr> <th>By</th> <th>Date</th> <th>By</th> <th>Date</th> </tr> </thead> <tbody> <tr> <td>Designed</td> <td>DSS 4\19\2019</td> <td>Checked</td> <td>DAM 4\19\2019</td> </tr> <tr> <td>Drawn</td> <td>WAD 4\19\2019</td> <td>In Charge of</td> <td>RAL 4\19\2019</td> </tr> </tbody> </table>		CONSULTANT PROJECT MANAGER: Dale A. Mitchell, P.E.				By	Date	By	Date	Designed	DSS 4\19\2019	Checked	DAM 4\19\2019	Drawn	WAD 4\19\2019	In Charge of	RAL 4\19\2019		MTA PROJECT MANAGER: Ralph C. Norwood, IV, P.E., P.T.O.E.	CONTRACT: 2019.15
No.	Revision	By	Date																										
1	REVISED SIGNING	DAM	7/19																										
CONSULTANT PROJECT MANAGER: Dale A. Mitchell, P.E.																													
By	Date	By	Date																										
Designed	DSS 4\19\2019	Checked	DAM 4\19\2019																										
Drawn	WAD 4\19\2019	In Charge of	RAL 4\19\2019																										
SHEET NUMBER: SS-01					Page 20 of 25																								
					13 OF 32																								

Date: 7/15/2019

STATION	PROFILE GRADE (FT)	LEFT EDGE OF TRAVEL WAY ELEV. (FT) & OFFSET (FT)
STA 109+50.0	Match Existing	Match Existing - 17'
STA 109+60.0	298.65	298.97 - 16.6'
STA 109+70.0	298.67	298.99 - 16.2'
STA 109+80.0	298.74	299.06 - 16'
STA 109+90.0	298.85	299.17 - 16'
STA 110+00.0	298.96	299.28 - 16'
STA 110+05.1	299.01	299.33 - 16'
STA 110+10.0	299.07	299.39 - 16'
STA 110+20.0	299.17	299.49 - 16'
STA 110+30.0	299.27	299.59 - 16'
STA 110+40.0	299.29	299.61 - 16'
STA 110+45.1	299.28	299.60 - 16'
STA 110+50.0	299.25	299.57 - 16'
STA 110+60.0	299.13	299.45 - 16'
STA 110+70.0	298.95	299.27 - 16.8'
STA 110+80.0	298.79	299.11 - 17.2'
STA 110+90.0	298.68	299.00 - 17.6'
STA 111+00.0	298.63	298.95 - 18'
STA 111+05.0	Match Existing	Match Existing - 18'



LEGEND

SSWL - SINGLE SOLID WHITE LINE
 SSYL - SINGLE SOLID YELLOW LINE
 SDYL - SINGLE DASH YELLOW LINE



Designed by:



HNTB CORPORATION
 340 County Road, Suite 6-C
 Westbrook, ME 04092
 TEL (207) 774-5155
 FAX (207) 228-0909



**THE GOLD STAR
 MEMORIAL HIGHWAY**

**GRAY SERVICE PLAZA
 FUEL SYSTEM REPLACEMENT**

FINAL SITE PLAN

No.	Revision	By	Date
1	REVISED SHEET	DAM	7/19

CONSULTANT PROJECT MANAGER: Dale A. Mitchell, P.E.			
Designed	DSS	7/15/2019	Checked
Drawn	WAD	7/15/2019	In Charge of

MTA PROJECT MANAGER: Ralph C. Norwood, IV, P.E., P.T.O.E.

CONTRACT: 2019.15

SHEET NUMBER: SP-02
 Page 21 of 25

14 OF 23

Date: 7/15/2019

CBI
 STA. 109+75.2, 36.4' LT.
 INSTALL CB TYPE F6
 GRATE ELEV. = 298.70'
 EXIST. 12" RCP INV IN = 295.46'
 12" INV. IN (P3) = 295.21'
 15" INV. OUT (P4) = 295.21'

P4
 CB4 TO CBI
 INSTALL 44' x 15" RCP

CB4
 STA. 109+77.5, 11.0' RT.
 INSTALL CB TYPE B1
 GRATE ELEV. = 298.39'
 15" INV. IN = 293.74'
 15" INV. OUT = 293.49'

P5
 CB4 TO OUTLET AT STA. 109+78 29' RT.
 INSTALL 16' x 15" RCP

P6
 STA. 111+02, 26.3' RT TO UNKNOWN
 INSTALL 300' (ESTIMATED) X 15" OPTION III

CB3 TO DIESEL CANOPY
 INSTALL 60' X 6"
 PVC CANOPY DRAINAGE
 PAID UNDER ITEM 800.50 NEW CANOPY (DIESEL)

OIL WATER SEPARATOR SYSTEM
 SHOWN BELOW FOR INFORMATIONAL PURPOSES
 PAYMENT SHALL BE MADE UNDER ITEM 604.30
 OIL-WATER SEPARATOR

CB2
 STA. 110+00.1, 20.0' LT.
 INSTALL CB TYPE F6
 GRATE ELEV. = 299.08'
 12" INV. OUT = 295.52'

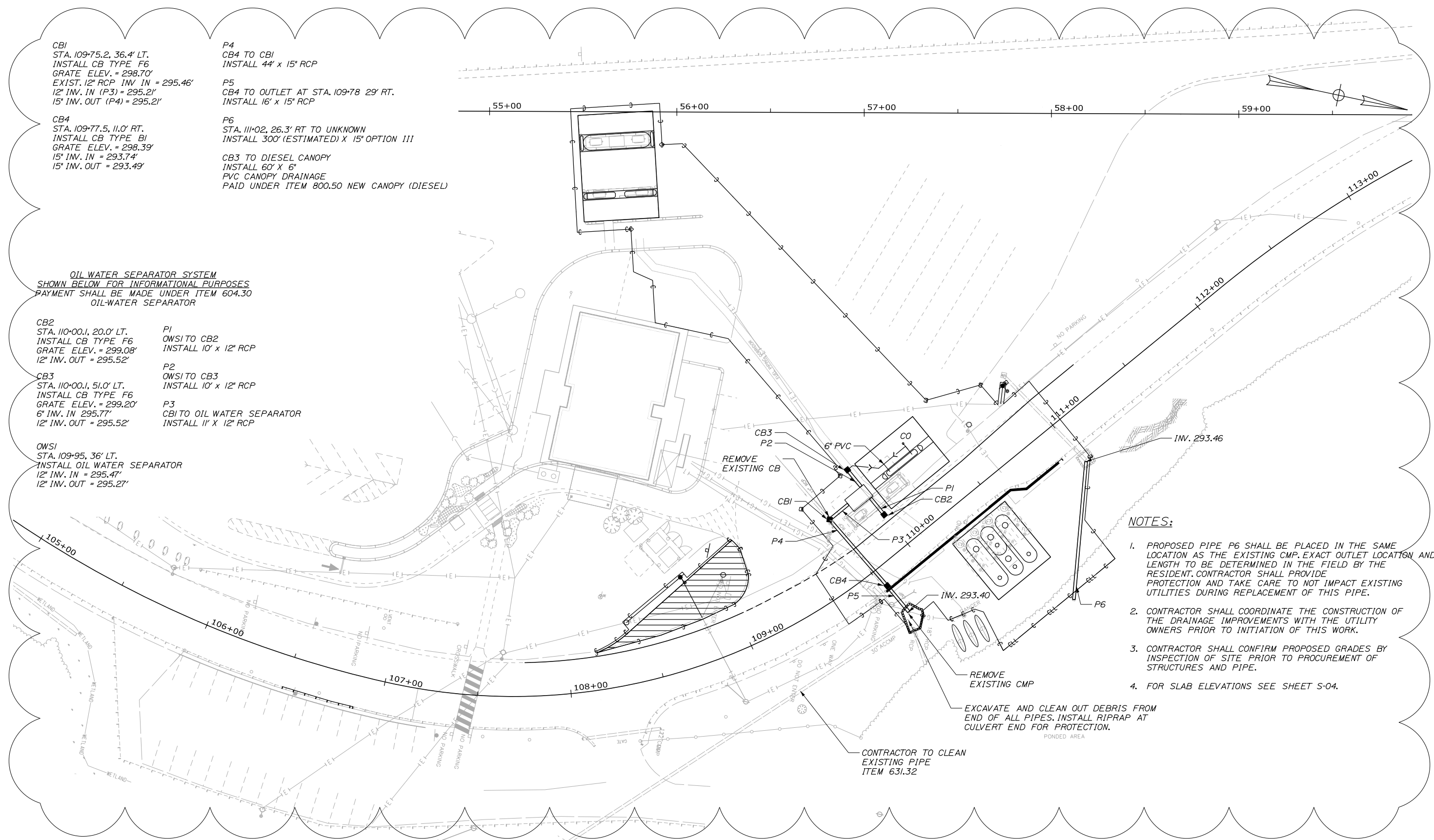
P1
 OWSI TO CB2
 INSTALL 10' x 12" RCP

CB3
 STA. 110+00.1, 51.0' LT.
 INSTALL CB TYPE F6
 GRATE ELEV. = 299.20'
 6" INV. IN 295.77'
 12" INV. OUT = 295.52'

P2
 OWSI TO CB3
 INSTALL 10' x 12" RCP

P3
 CBI TO OIL WATER SEPARATOR
 INSTALL 11' x 12" RCP

OWSI
 STA. 109+95, 36' LT.
 INSTALL OIL WATER SEPARATOR
 12" INV. IN = 295.47'
 12" INV. OUT = 295.27'



NOTES:

1. PROPOSED PIPE P6 SHALL BE PLACED IN THE SAME LOCATION AS THE EXISTING CMP. EXACT OUTLET LOCATION AND LENGTH TO BE DETERMINED IN THE FIELD BY THE RESIDENT. CONTRACTOR SHALL PROVIDE PROTECTION AND TAKE CARE TO NOT IMPACT EXISTING UTILITIES DURING REPLACEMENT OF THIS PIPE.
2. CONTRACTOR SHALL COORDINATE THE CONSTRUCTION OF THE DRAINAGE IMPROVEMENTS WITH THE UTILITY OWNERS PRIOR TO INITIATION OF THIS WORK.
3. CONTRACTOR SHALL CONFIRM PROPOSED GRADES BY INSPECTION OF SITE PRIOR TO PROCUREMENT OF STRUCTURES AND PIPE.
4. FOR SLAB ELEVATIONS SEE SHEET S-04.

EXCAVATE AND CLEAN OUT DEBRIS FROM END OF ALL PIPES. INSTALL RIPRAP AT CULVERT END FOR PROTECTION.

CONTRACTOR TO CLEAN EXISTING PIPE ITEM 631.32



Designed by:



HNTB CORPORATION
 340 County Road, Suite 6-C
 Westbrook, ME 04092
 TEL (207) 774-5155
 FAX (207) 228-0909



**THE GOLD STAR
 MEMORIAL HIGHWAY**

**GRAY SERVICE PLAZA
 FUEL SYSTEM REPLACEMENT**

DRAINAGE PLAN

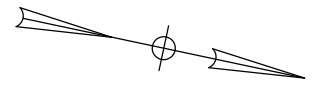
No.	Revision	By	Date
1	REVISED DRAINAGE	DAM	7/19

CONSULTANT PROJECT MANAGER: Dale A. Mitchell, P.E.			
Designed	DSS	7/15/2019	Checked
Drawn	WAD	7/15/2019	In Charge of

MTA PROJECT MANAGER: Ralph C. Norwood, IV, P.E., P.T.O.E.

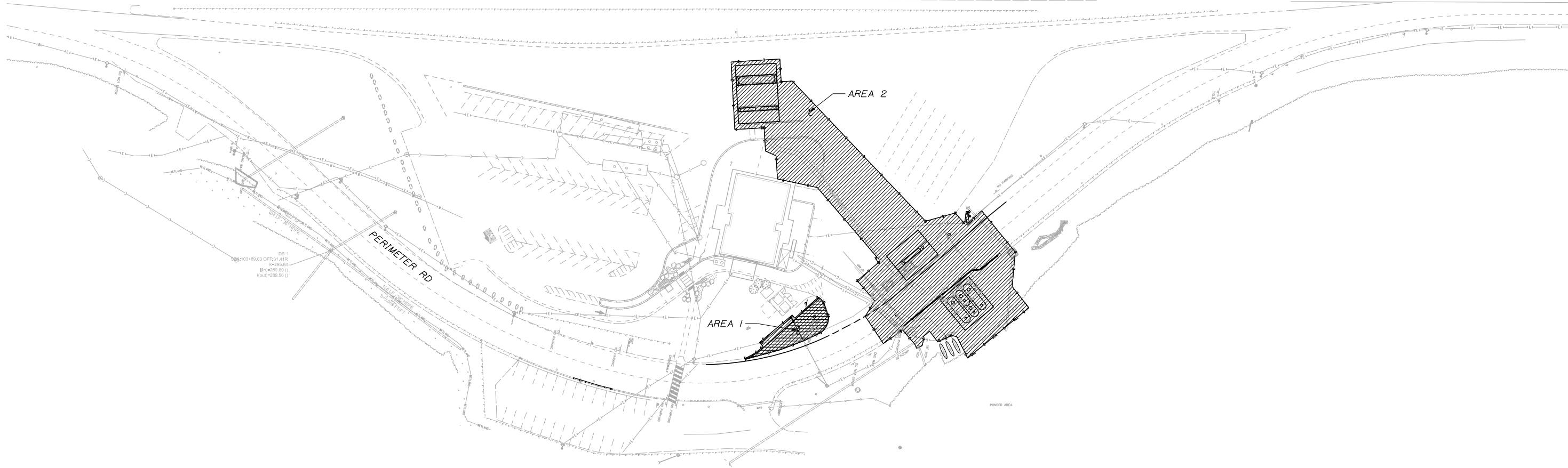
CONTRACT: 2019.15


SHEET NUMBER: SP-02
 Page 22 of 25
 15 OF 25



← MAINE TURNPIKE SB

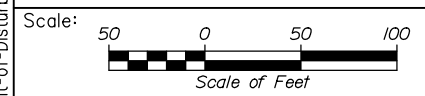
MAINE TURNPIKE NB →



 NORTHBOUND PLAZA LIMIT OF DISTURBANCE
 AREA 1 = 1,733 SF
 AREA 2 = 28,913 SF
 TOTAL = 30,645 SF (0.70 ACRES)

Date: 7/15/2019

Filename: 016_Limit-of-Disturbance-Plan.dgn



Designed by:


HNTB

No.	Revision	By	Date
1	REVISED LOD PLAN	DAM	7/19

CONSULTANT PROJECT MANAGER: Dale A. Mitchell, P.E.

	By	Date	Checked	By	Date
Designed	DSS	7/15/2019		DAM	7/15/2019
Drawn	WAD	7/15/2019	In Charge of	RAL	7/15/2019

HNTB CORPORATION
 340 County Road, Suite 6-C
 Westbrook, ME 04092
 TEL (207) 774-5155
 FAX (207) 228-0909



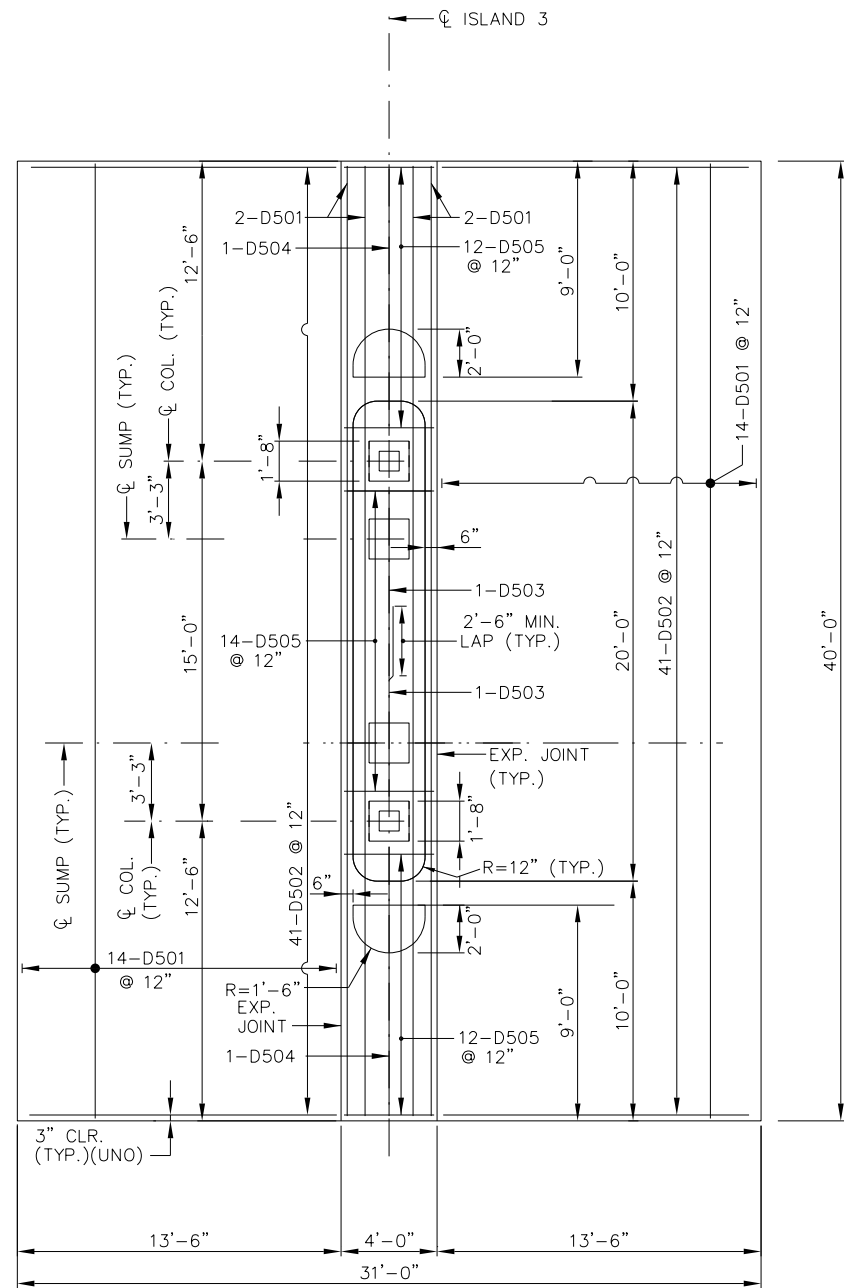
**THE GOLD STAR
MEMORIAL HIGHWAY**

MTA PROJECT MANAGER: Ralph C. Norwood, IV, P.E., P.T.O.E.

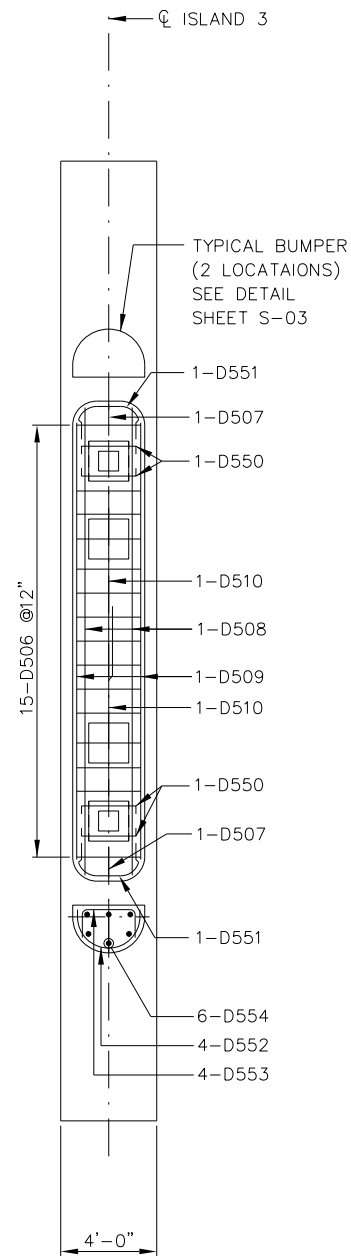
GRAY SERVICE PLAZA
 FUEL SYSTEM REPLACEMENT
 LIMIT OF DISTURBANCE PLAN

SHEET NUMBER: XX-01
 Page 23 of 25
 CONTRACT: 2019.15
 16 OF 32

Date: 7/15/2019



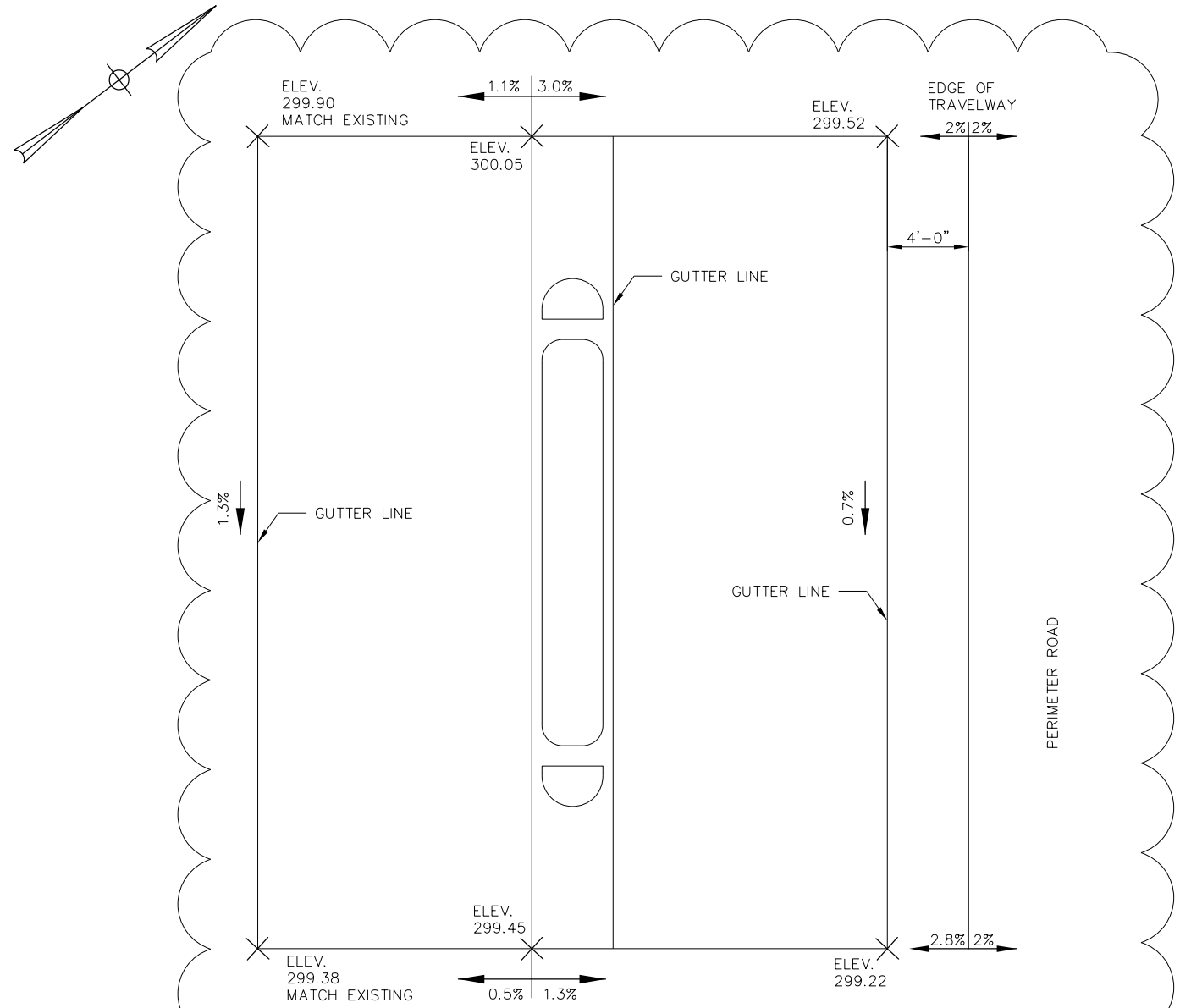
PLAN
DIESEL PLAZA
1/4" = 1'-0"



PLAN
RAISED ISLAND 3
DIESEL DISPENSER
1/4" = 1'-0"

NOTES

1. FOR NOTES SEE SHEET S-02.
2. FIELD CUT D503 BARS TO AVOID SUMP.



DIESEL SLAB, ELEVATION,
AND GRADING DETAIL
1/4" = 1'-0"

NOTES

1. CONTRACTOR SHALL FIELD VERIFY PROPOSED ELEVATIONS SHOWN ABOVE PRIOR TO CONSTRUCTION OF SLAB.
2. CONTRACTOR SHALL ENSURE THAT SLAB AND SURROUNDING AREA DRAINS TO CB2 AND CB3.

Filename: 020_Diesel-SlabPlan.dgn

Scale:				Designed by:			
AS NOTED							
No.	Revision	By	Date				
1	REVISED SLAB GRADING	DAM	7/19				

CONSULTANT PROJECT MANAGER: Dale A. Mitchell, P.E.					
By	Date	By	Date	By	Date
Designed	JDW 4\19\2019	Checked	GLS 4\19\2019		
Drawn	WAD 4\19\2019	In Charge of	RAL 4\19\2019		

HNTB CORPORATION
340 County Road, Suite 6-C
Westbrook, ME 04092
TEL (207) 774-5155
FAX (207) 228-0909

**THE GOLD STAR
MEMORIAL HIGHWAY**

MTA PROJECT MANAGER: Ralph C. Norwood, IV, P.E., P.T.O.E.

GRAY SERVICE PLAZA
FUEL SYSTEM REPLACEMENT
CONCRETE SLAB AND ISLANDS
AT DIESEL DISPENSERS

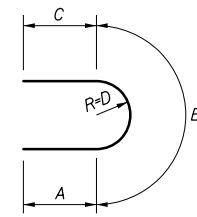
SHEET NUMBER: S-04
Page 24 of 25

CONTRACT: 2019.15
20 OF 23

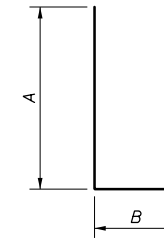
Date: 7/15/2019

GRAY TRAVEL PLAZA FUEL SYSTEM REPLACEMENT										
MARK	SIZE	NO.	LENGTH	TYPE	A	B	C	D	REMARKS	
GASOLINE DISPENSER SLAB										
G500	5	58	39'	-	6"	Str				
G501	5	41	10'	-	0"	Str				
G502	5	41	21'	-	6"	Str				
G503	5	41	11'	-	0"	Str				
G504	5	37	3'	-	6"	Str				
G505	5	6	3'	-	10"	Str				
G506	5	4	16'	-	0"	Str				
G507	5	39	8'	-	6"	Str				
G508	5	8	3'	-	2"	Str				
G509	5	2	3'	-	4"	Str				
G510	5	2	11'	-	8"	Str				
G511	5	4	15'	-	3"	Str				
G512	5	4	14'	-	6"	Str				
G513	5	28	2'	-	6"	Str				
G514	5	4	16'	-	0"	Str				
G515	5	2	35'	-	1"	Str				
G516	5	2	34'	-	3"	Str				
G517	5	2	32'	-	8"	Str				
G518	5	2	28'	-	6"	Str				
G519	5	29	7'	-	6"	Str				
G520	5	4	1'	-	4"	Str				
G521	5	4	2'	-	8"	Str				
G522	5	4	2'	-	4"	Str				
G523	5	2	5'	-	0"	Str				
G524	5	16	6'	-	0"	Str				
G550	5	4	4'	-	2"	129	2'-6"	10"		
G551	5	2	9'	-	4"	140	3'-0"	1'-2"	1'-0"	9"
G552	5	2	17'	-	3"	117	2'-9"	11'-9"	2'-9"	3'-9"
G553	5	10	4'	-	5"	117	3"	3'-11"	3"	1'-3"
G554	5	8	4'	-	2"	129	2'-2"	1'-0"		
G555	5	52	4'	-	0"	118	3'-2"	10"		
G556	5	16	7'	-	1"	117	2'-9"	1'-7"	2'-9"	6"
G557	5	32	1'	-	11 1/2"	135	6"	1'-0"	5 1/2"	3 3/4"
DIESEL DISPENSER SLAB										
D501	5	32	39'	-	6"	Str				
D502	5	82	13'	-	0"	Str				
D503	5	2	8'	-	9"	Str				
D504	5	2	10'	-	4"	Str				
D505	5	38	3'	-	6"	Str				
D506	5	15	2'	-	6"	Str				
D507	5	2	1'	-	2"	Str				
D508	5	2	19'	-	2"	Str				
D509	5	2	18'	-	1"	Str				
D510	5	2	7'	-	8"	Str				
D550	5	4	4'	-	2"	129	2'-6"	10"		
D551	5	2	9'	-	4"	140	3'-0"	1'-2"	1'-0"	9"
D552	5	8	4'	-	5"	117	3"	3'-11"	3"	1'-3"
D553	5	8	4'	-	2"	129	2'-2"	1'-0"		
D554	5	12	4'	-	0"	118	3'-2"	10"		
FUEL SLAB										
F500	5	39	38'	-	0"	Str				
F501	5	78	12'	-	6"	Str				
F502	5	39	9'	-	6"	Str				

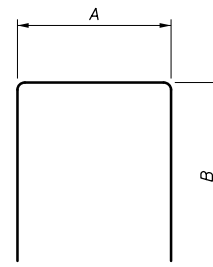
NOTE:
REINFORCED STEEL USED IN DISPENSER SLABS, ISLANDS, AND FUEL SLABS SHALL BE EPOXY COATED.



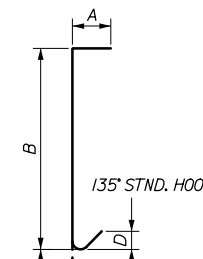
TYPE 117



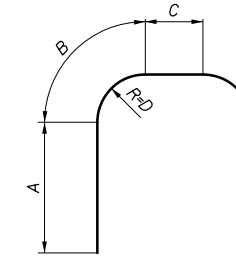
TYPE 118



TYPE 129



TYPE 135



TYPE 140

Filename: 024_Reinforce-Schedule.dgn

Scale:		NONE		Designed by:		HNTB	
No.	Revision	By	Date	CONSULTANT PROJECT MANAGER: Dale A. Mitchell, P.E.			
1	ADDED NOTE	DAM	7/19	By	Date	By	Date
				Designed	JDW 4\19\2019	Checked	DAM 4\19\2019
				Drawn	WAD 4\19\2019	In Charge of	RAL 4\19\2019

HNTB CORPORATION
340 County Road, Suite 6-C
Westbrook, ME 04092
TEL (207) 774-5155
FAX (207) 228-0909

**THE GOLD STAR
MEMORIAL HIGHWAY**

MTA PROJECT MANAGER: Ralph C. Norwood, IV, P.E., P.T.O.E.

GRAY SERVICE PLAZA
FUEL SYSTEM REPLACEMENT
REINFORCING SCHEDULE

SHEET NUMBER: S-8
Page 25 of 25

CONTRACT: 2019.15

24 OF 32