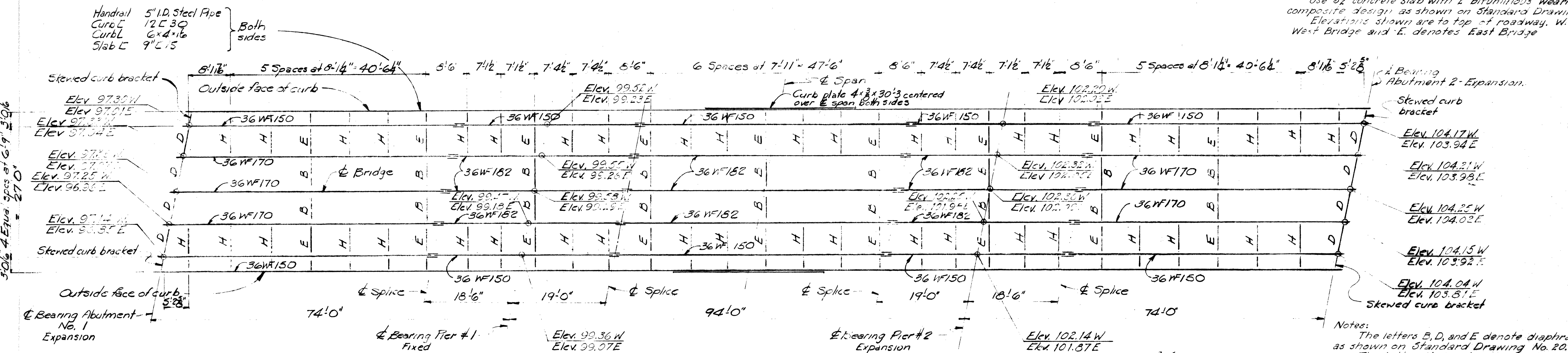
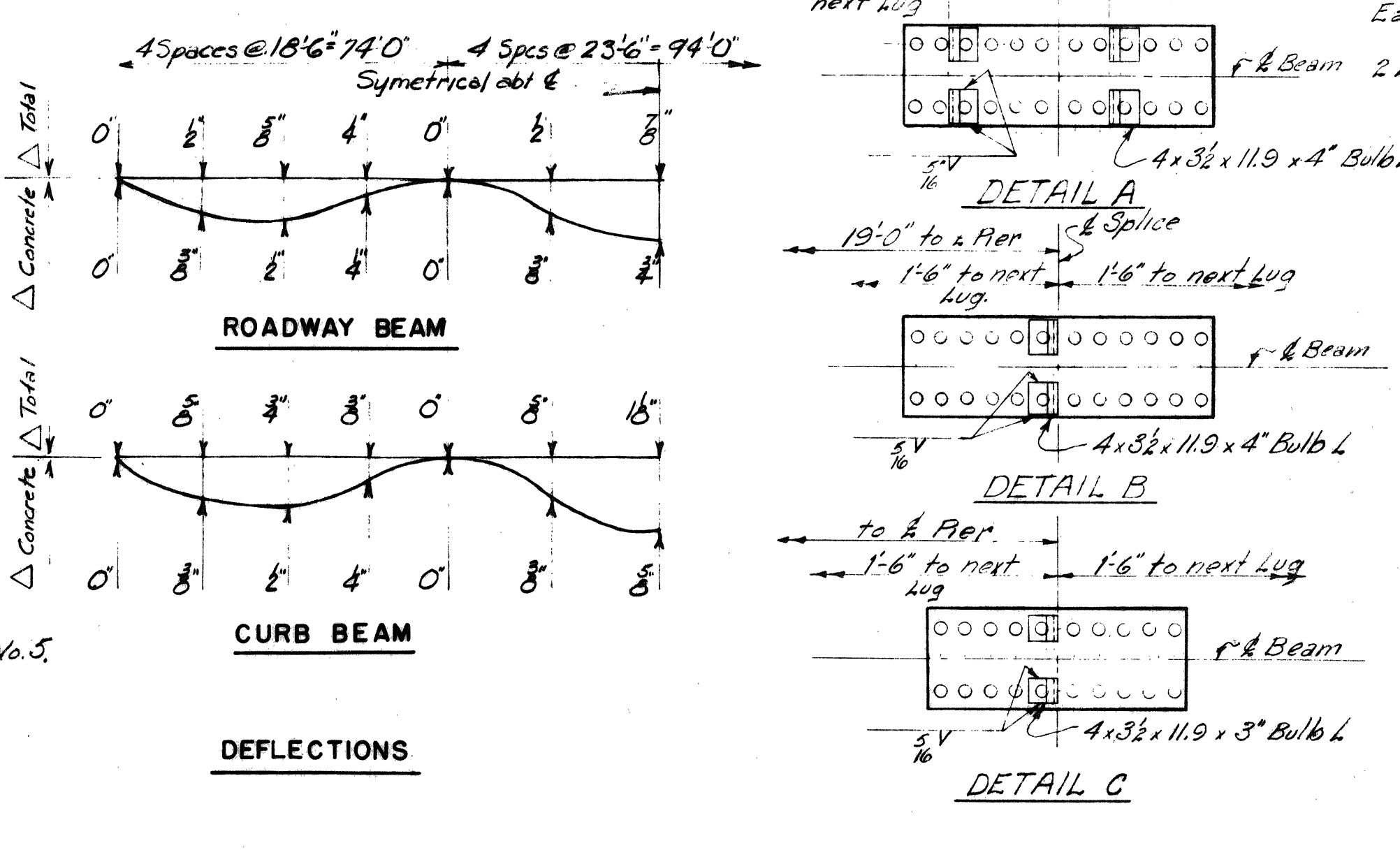
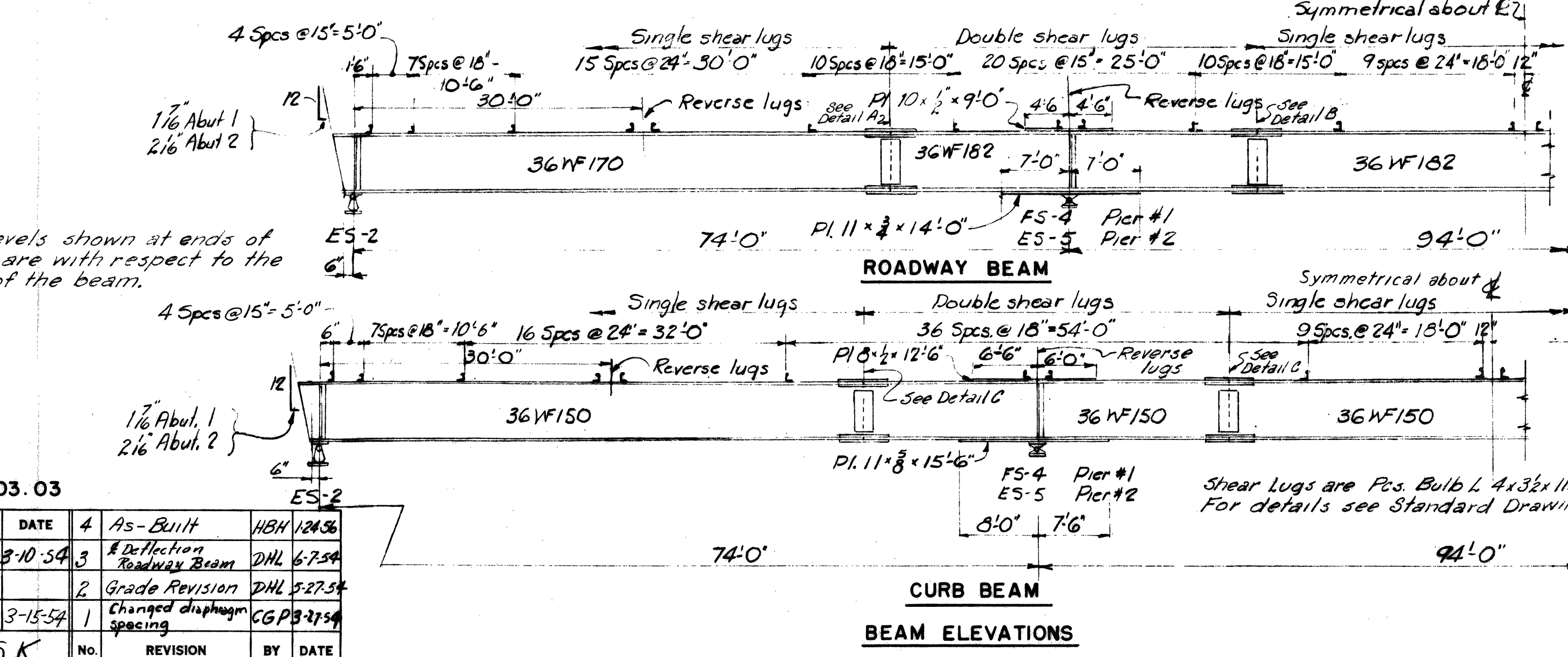


FLOOR PLAN



FRAMING PLAN



DRAWING 7.03.03

NO.	REVISION	BY	DATE
1	As-Built	HBH	12/26/36
2	Deflection	DHL	6/7/54
3	Grade Revision	DHL	5/27/54
4	Changed diaphragm spacing	CGP	3/15/54

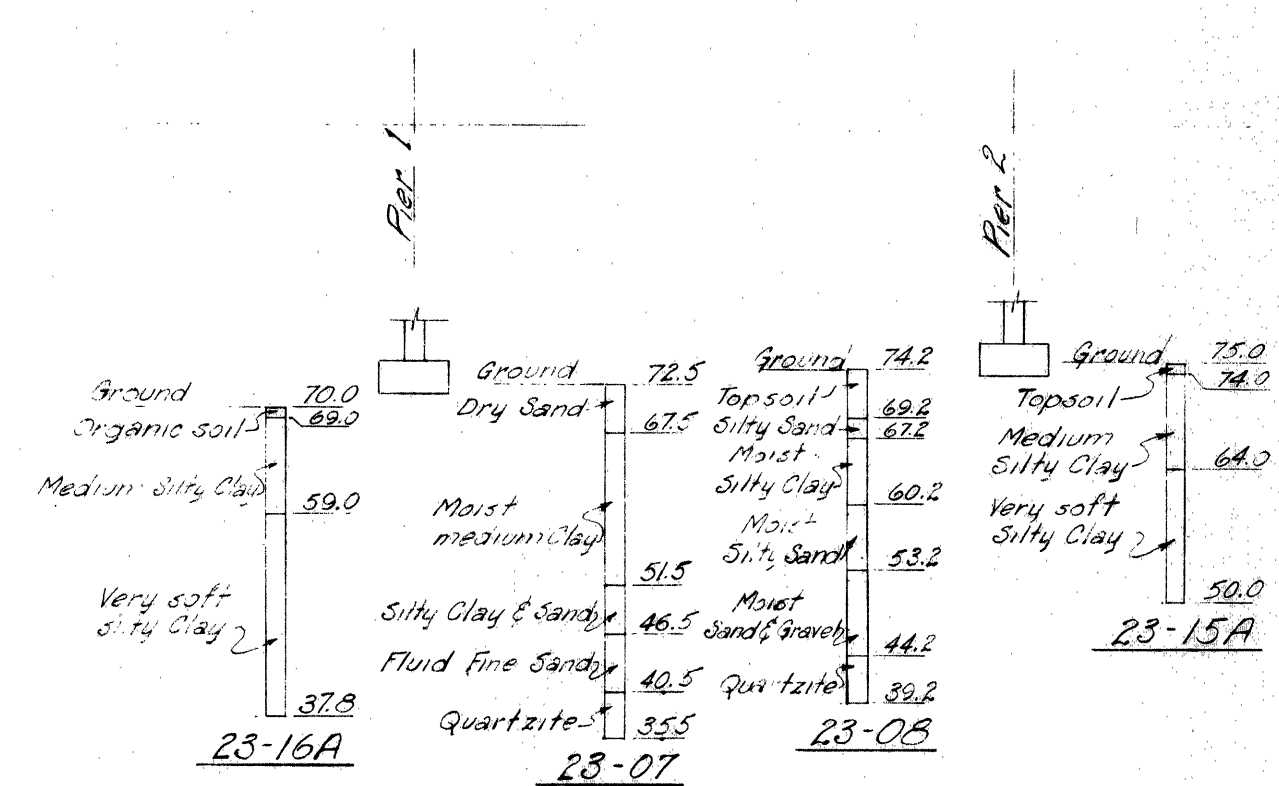
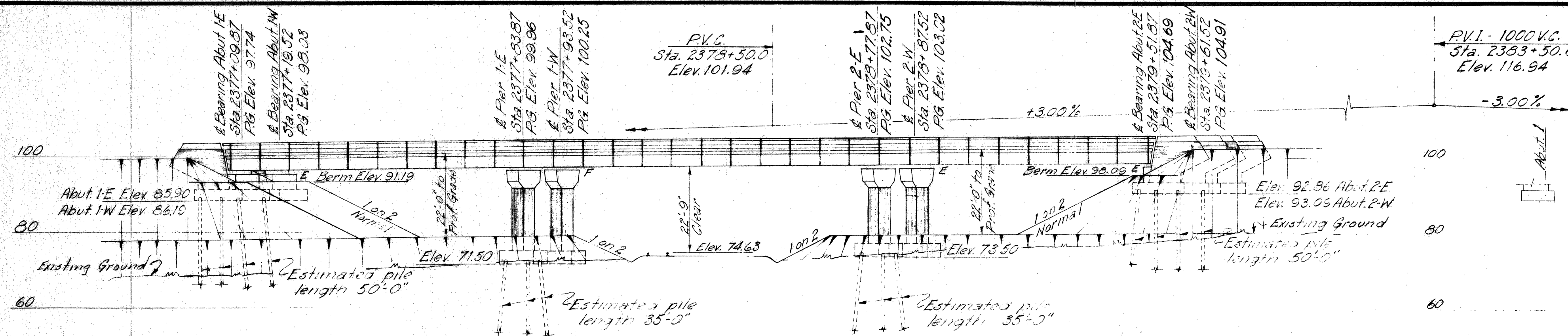
IN CHARGE OF: I.D.S.K.

MAINE TURNPIKE AUTHORITY
MAINE TURNPIKE
 SECTION 2 - PORTLAND TO AUGUSTA

STRUCTURE NO. 7 TURNPIKE OVER
 MAINE CENTRAL RAILROAD
 STA. 2378 + 28.82
 SUPERSTRUCTURE

HOWARD, NEEDLES, TAMMEN & BERGENDOFF
 CONSULTING ENGINEERS
 NEW YORK KANSAS CITY

SCALE: 3/8" = 1'-0"
 CONTRACT NO.
 SHEET NO. 52 OF 382

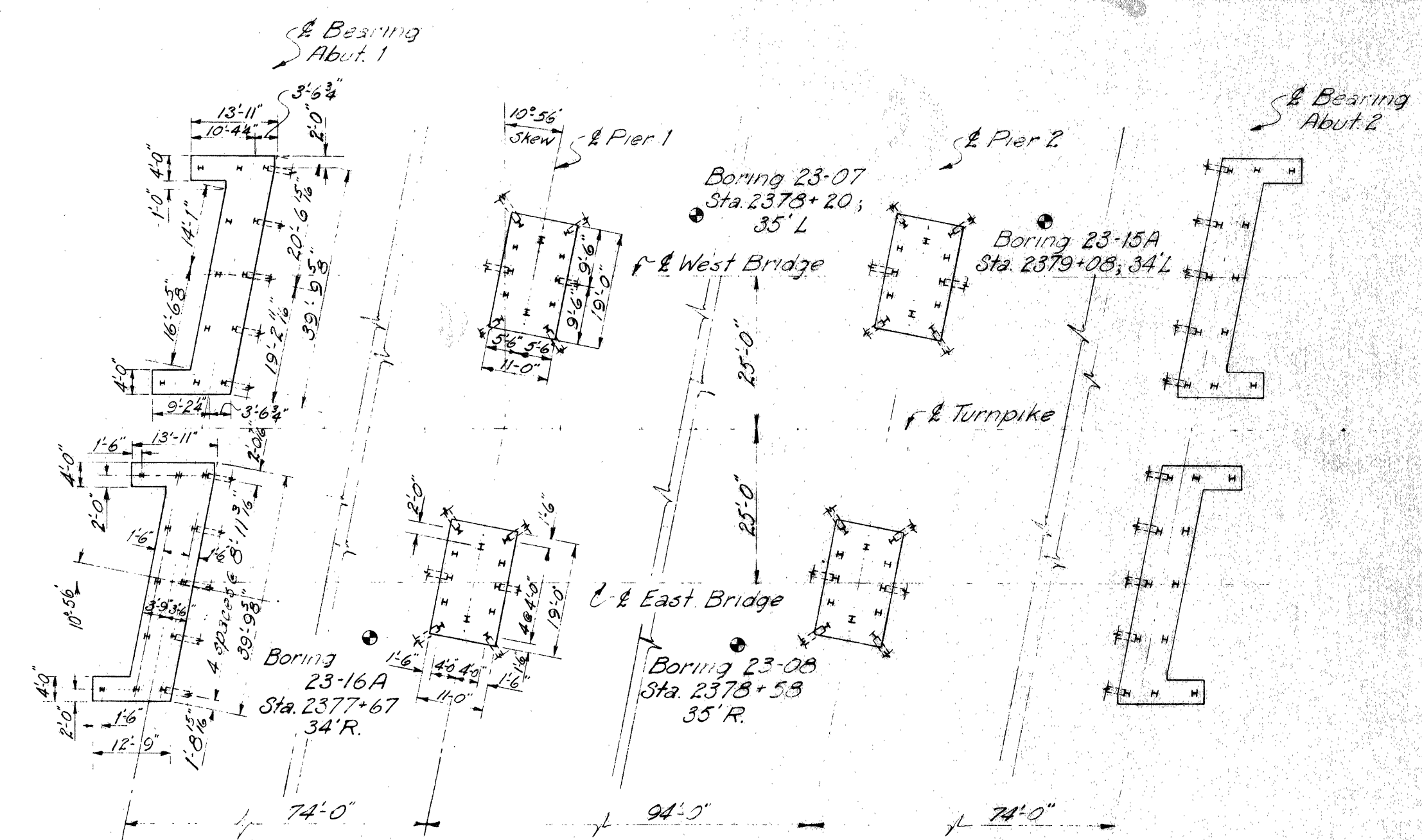
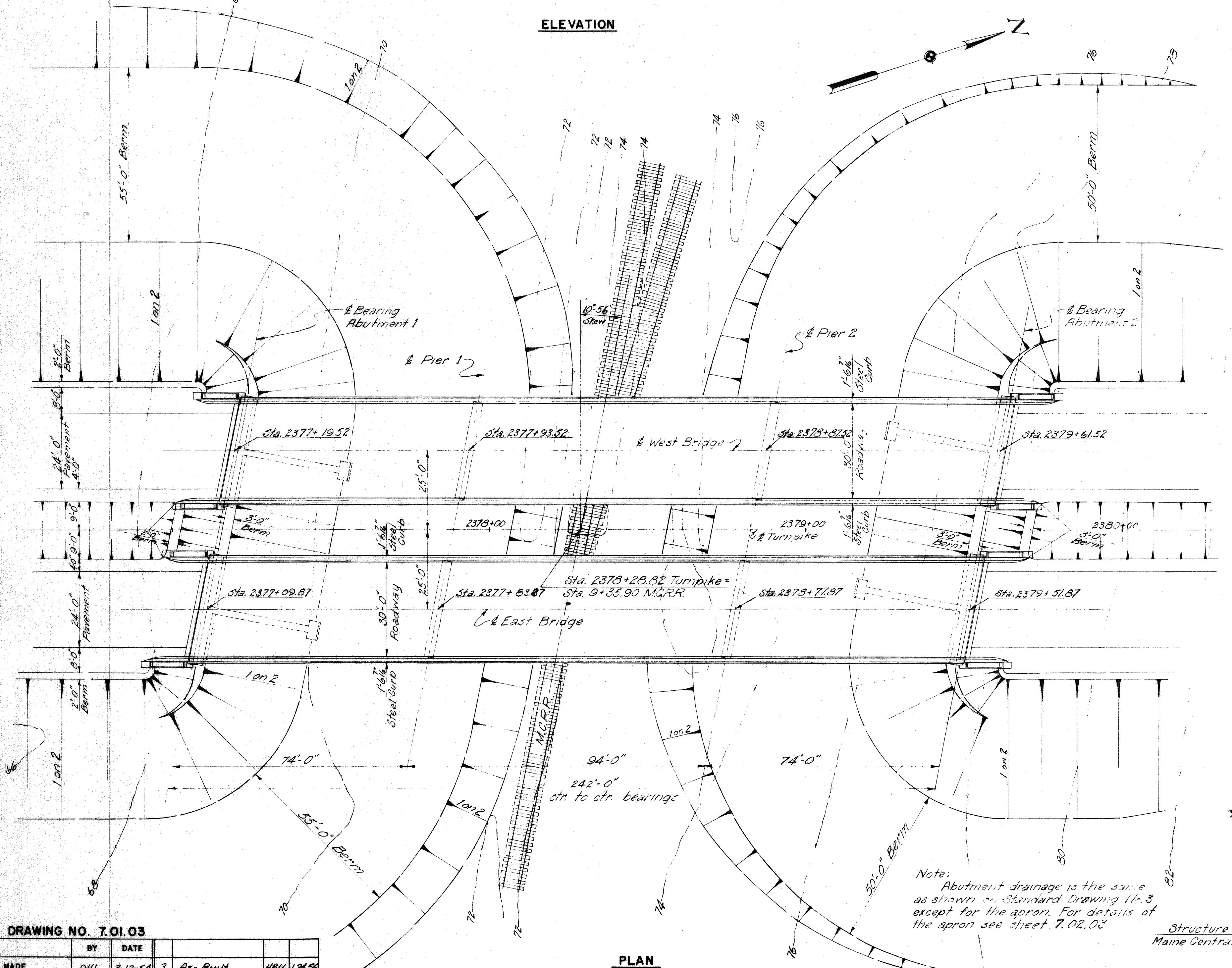


REFERENCES

Dwg No	Title	Superstructure			
		Sub-structure	Steel Fabricator	Erector	Floor Contractor
SD1A	Standard Abutment Details	✓	✓	✓	✓
SD2	Standard Pier Details	✓	✓	✓	✓
SD4	Standard Pile Details	✓			
SD5	Standard Handrail, Bearing Devices and Miscellaneous Details	✓	✓	✓	✓
SD3	Abutment Drainage Details	✓			
SD6	Standard Diaphragm Details	✓	✓	✓	✓
SD10	Type 'A' Splices for 36 W Beams	✓	✓	✓	✓
SD11A	Type 'X' and 'Y' Expansion Joints	✓	✓	✓	✓
SD12A	Type 'Z' Expansion Joints	✓	✓	✓	✓
SD20	Standard Bridge Floor Cross Section, Steel Curb, Handrail and Diaphragms - 30' Roadway	✓	✓	✓	✓

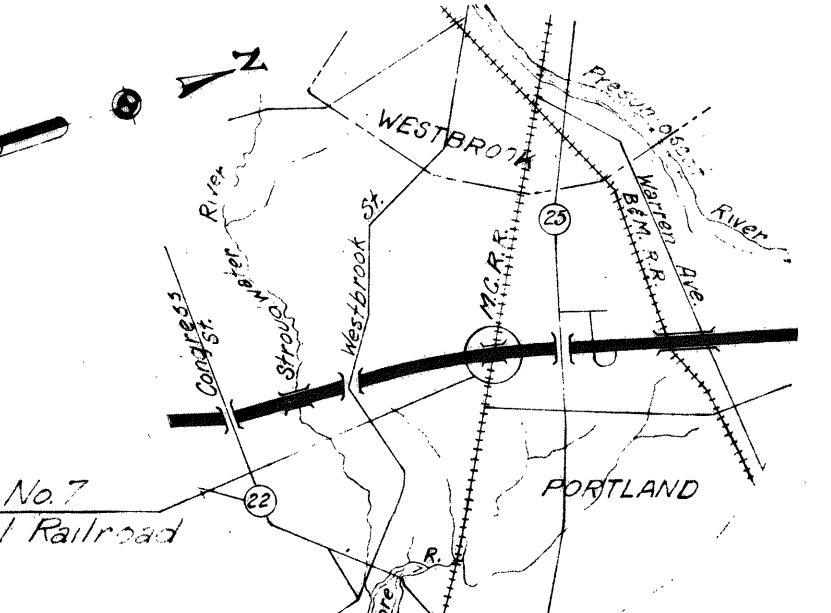
GENERAL NOTES

Design Specifications: AASHTO (1953) with minor modifications.
 Design Live Load: H 20-315
 Maximum Pile Loads:
 For Abutments is 347 Tons.
 For Piers is 57 Tons.



FOOTING PLAN

Footings plans for the East and West bridges are identical except for elevations.
 Pier 2 is the same as Pier 1.
 Abutment 2 is the same as Abutment 1 by rotation.
 Pier piles are 12 BP53 and Abutment piles are 10 BP42. All batters are 3" per foot.



VICINITY MAP
Scale 1" = 1 mile

DRAWING NO. 7.01.03

MADE	BY	DATE	NO.	REVISION	BY	DATE
	DHL	3-12-54	3	As-Built	HBH	1-24-54
			2	P.G. Elevs. Piers & Abut. 2	DHL	6-7-54
	VDG	3-15-54	1	Grade Revision	DHL	5-27-54

PLAN

Note: Abutment drainage is the same as shown on Standard Drawing 11-3 except for the apron. For details of the apron see sheet 7.02.03

MAINE TURNPIKE AUTHORITY
MAINE TURNPIKE
SECTION 2— PORTLAND TO AUGUSTA

STRUCTURE NO. 7 TURNPIKE OVER
MAINE CENTRAL RAILROAD
 STA. 2378+28.82
GENERAL PLAN AND ELEVATION

HOWARD, NEEDLES, TAMMEN & BERGENDOFF CONSULTING ENGINEERS
 NEW YORK KANSAS CITY

SCALE: 1" = 20'
 CONTRACT NO. _____
 SHEET NO. 57 OF 392