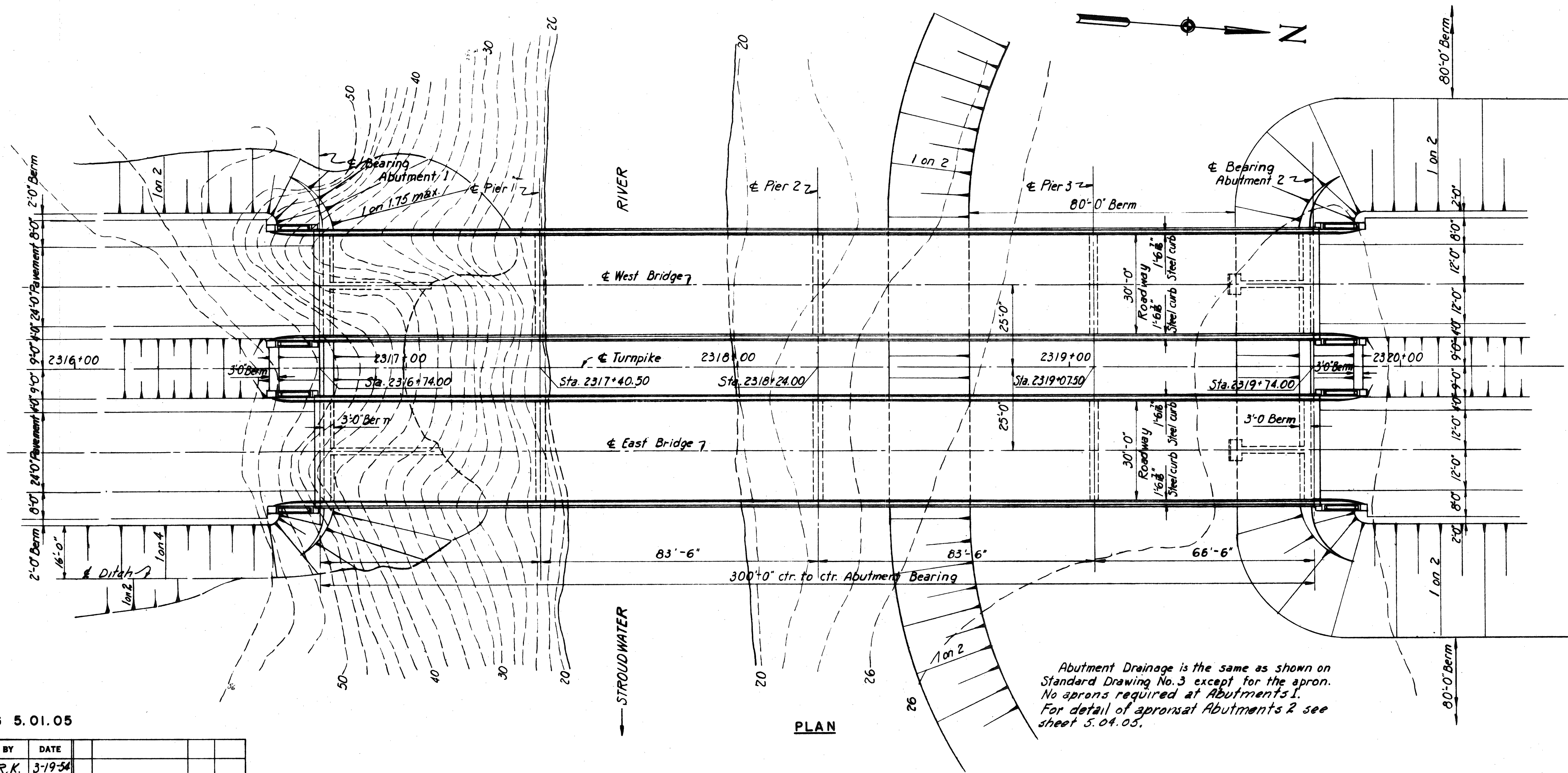


ELEVATION

REFERENCES

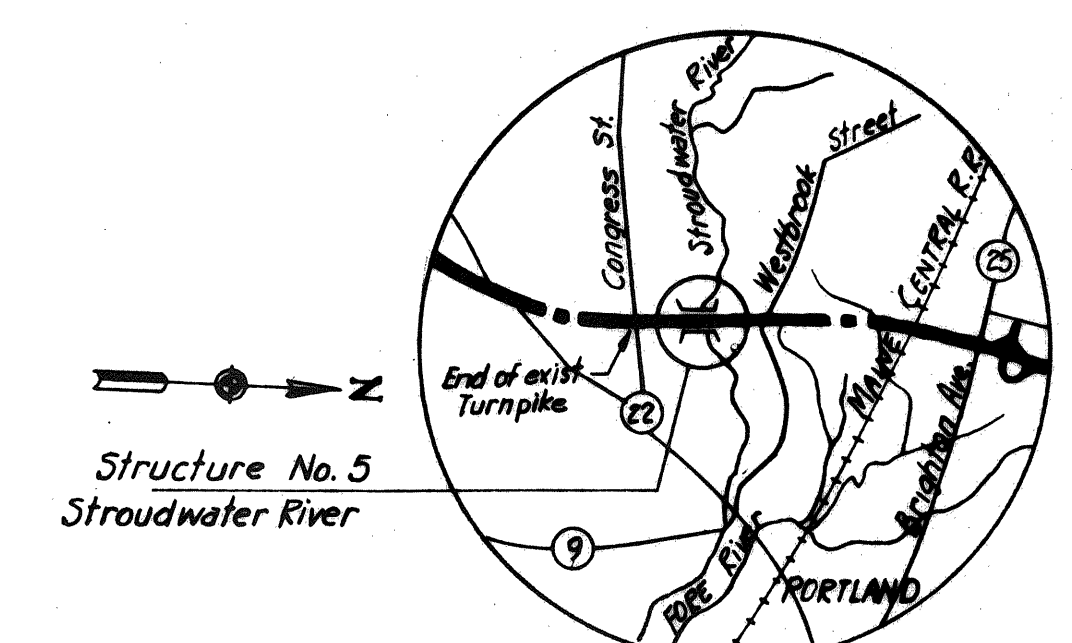
Dwg No.	Title	Substr. Con. Tractor	Steel Fabr. Yr	Steel Erector	Floor Contor
SD1A	Standard Abutment Details	✓	✓	✓	✓
SD2	Standard Pier Details	✓	✓	✓	✓
SD3	Abutment Drainage Details	✓	✓	✓	✓
SD4	Standard Pile Details	✓	✓	✓	✓
SD5	Standard Handrail, Bearing Devises and Miscellaneous Details	✓	✓	✓	✓
SD5A	Standard Bearing Devises for Bridges over Streams	✓	✓	✓	✓
SD6	Standard Diaphragm Details	✓	✓	✓	✓
SD10	Standard Type 'A' Splices for 36 WF Beams	✓	✓	✓	✓
SD12A	Type 'Z' Expansion Joints	✓	✓	✓	✓
SD20	Standard Bridge Floor Cross-Section, Steel Curb, Handrail and Diaphragms, 30 FT. Roadway	✓	✓	✓	✓



PLAN

GENERAL NOTES

Design Specification: AASMO (1953) with Minor Modifications
 Design Live Loading: H 20-516-44
 Maximum Pile Loads
 Abutments 1 and 2 = 34 tons
 Piers 1 and 2 = 58 tons
 Pier 3 = 54.7 tons



VICINITY MAP
Scale 1"=1 Mile

Abutment Drainage is the same as shown on Standard Drawing No. 3 except for the apron. No aprons required at Abutments 1. For detail of aprons at Abutments 2 see sheet 5.04.05.

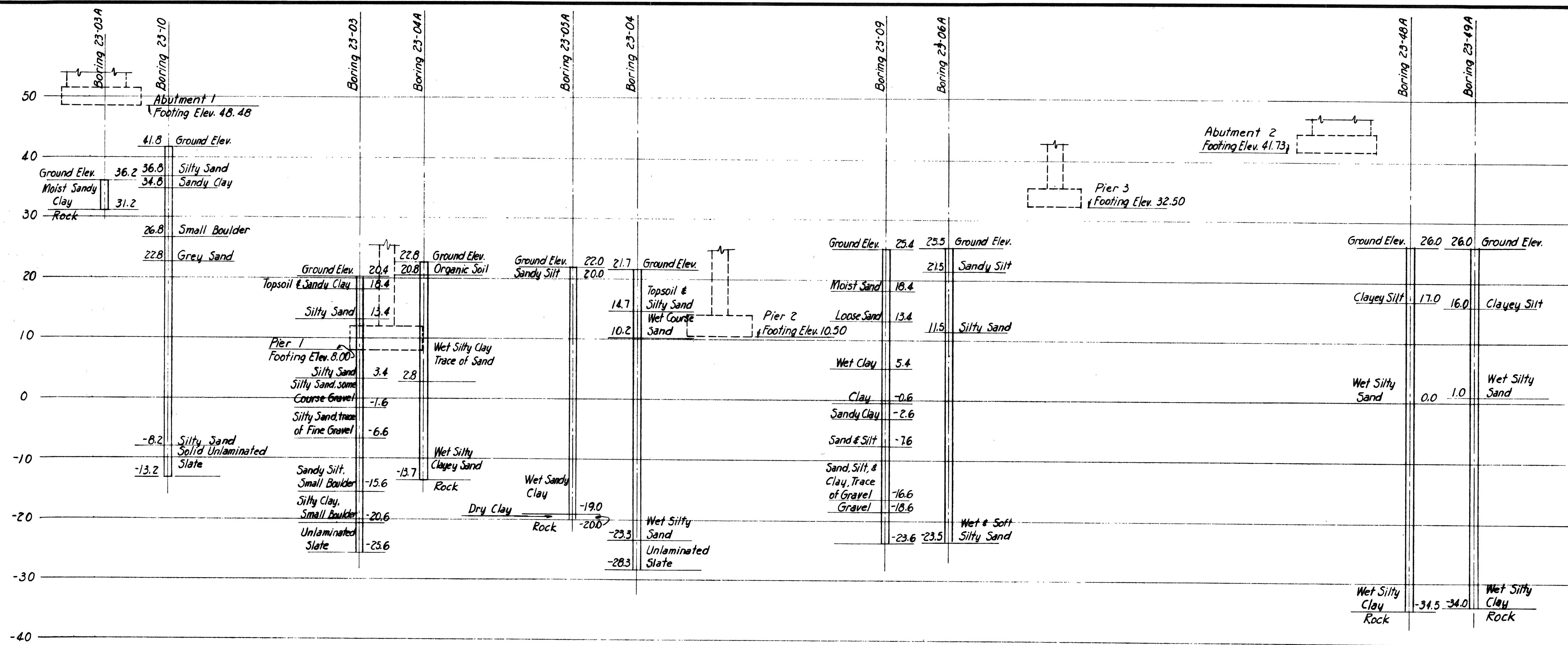
DRAWING 5.01.05

BY	DATE				
MADE	R.K.	3-19-54			
TRACED					
CHECKED	DHL	3-24-54	1	As-Built	MBH VMS
IN CHARGE OF	IDSK		No.	REVISION	BY DATE

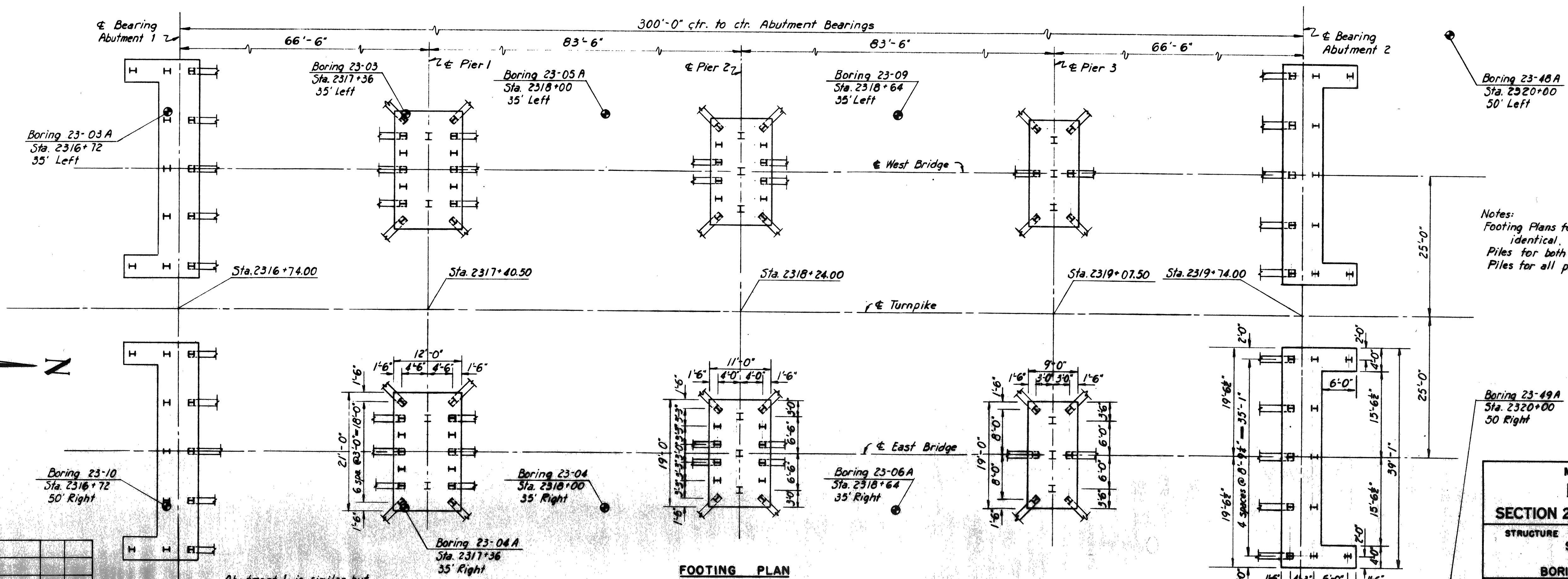
MAINE TURNPIKE AUTHORITY
MAINE TURNPIKE
SECTION 2 — PORTLAND TO AUGUSTA

STRUCTURE NO. 5 TURNPIKE OVER
 STROUDWATER RIVER
 STA. 2318+24
GENERAL PLAN AND ELEVATION

HOWARD, NEEDLES, TAMMEN & BERGENDOFF SCALE: 1"=20'-0"
 CONSULTING ENGINEERS CONTRACT NO.
 NEW YORK KANSAS CITY SHEET NO. 48 OF 322



BORINGS



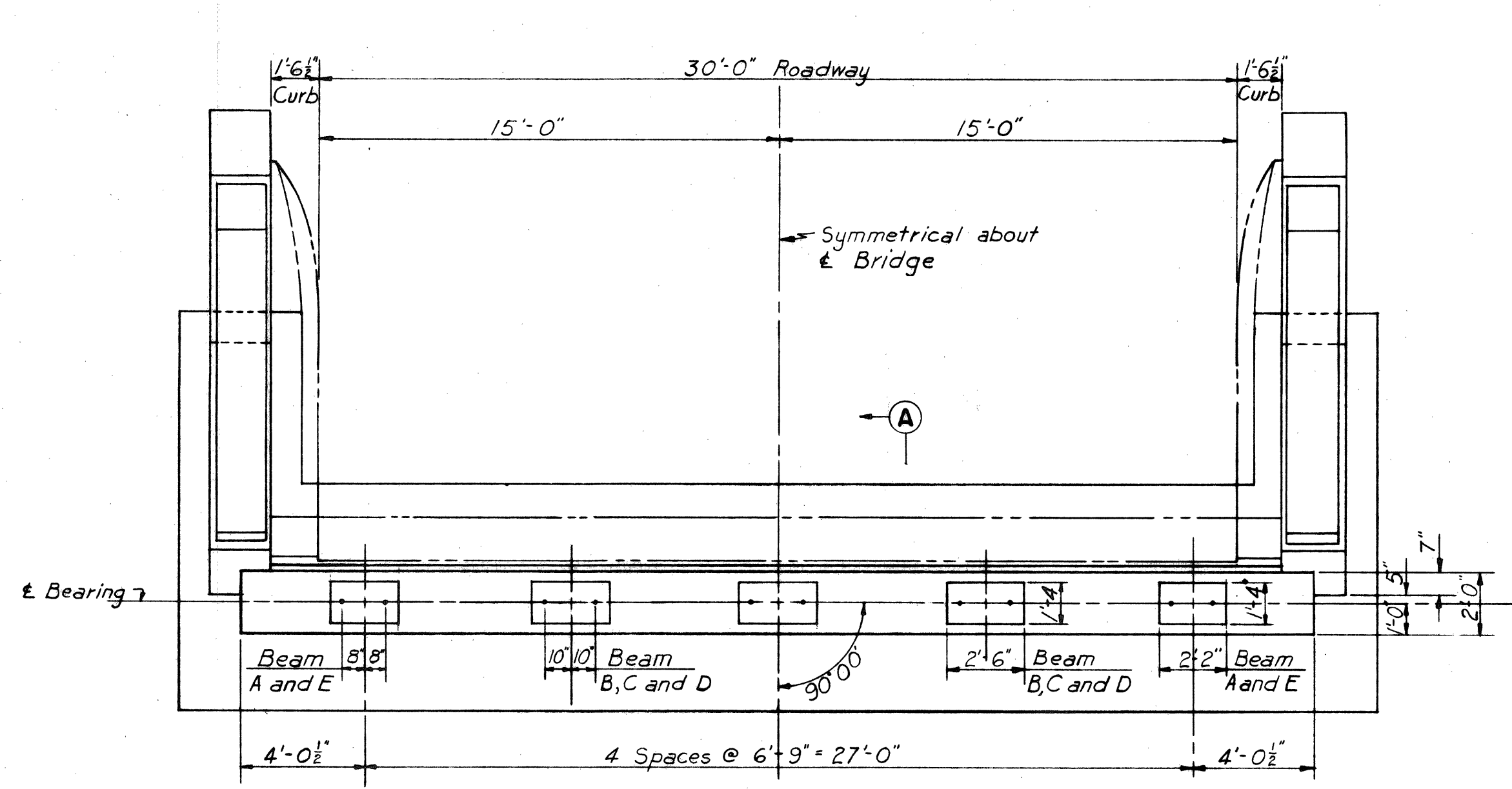
Notes:
 Footing Plans for East and West Bridges are identical.
 Piles for both abutments are 10 BP 42 Sections.
 Piles for all piers are 12 BP 53 Sections.

DRAWING 5.02.05

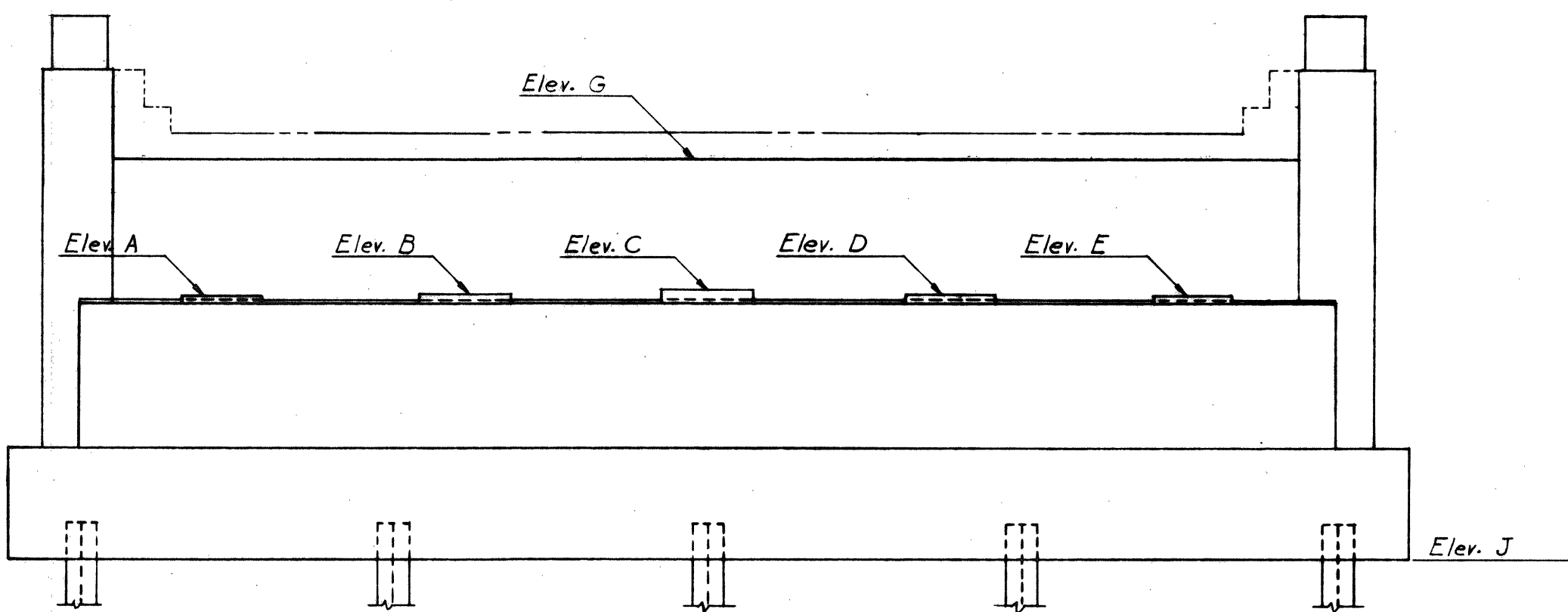
BY	DATE			
MADE	R.K.	3-22-54		
TRACED				
CHECKED	DHL	3-24-54	As-Built	NBH 124.56
IN CHARGE OF	IDSK			
No.	REVISION	BY	DATE	

Abutment 1 is similar but opposite to Abutment 2

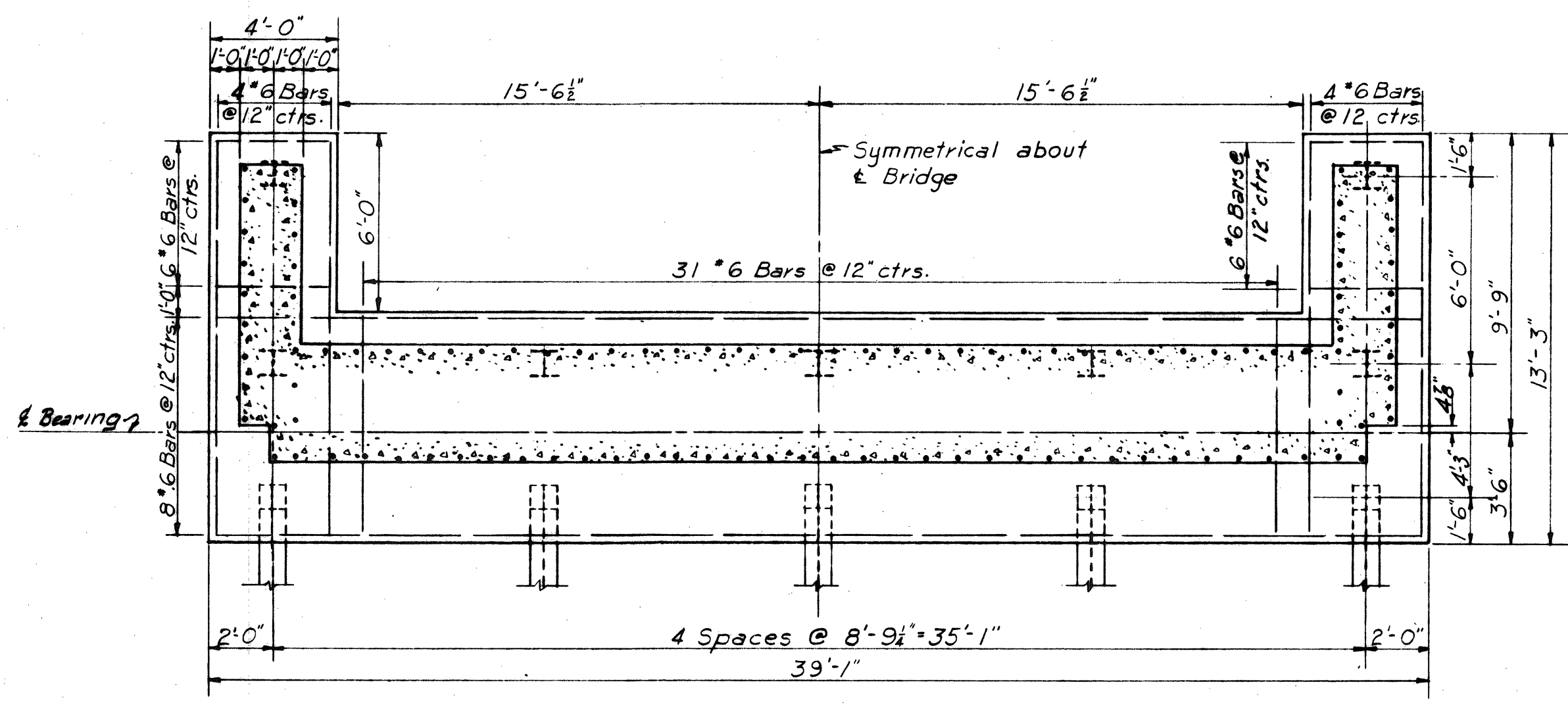
MAINE TURNPIKE AUTHORITY
MAINE TURNPIKE
SECTION 2 — PORTLAND TO AUGUSTA
 STRUCTURE NO. 5 TURNPIKE OVER
 STROUDWATER RIVER
 STA. 2318+24
BORINGS AND FOOTING PLAN
 HOWARD, NEEDLES, TAMMEN & BERGENDOFF
 CONSULTING ENGINEERS
 NEW YORK KANSAS CITY
 SCALE: 1/4"=1'-0"
 CONTRACT NO.
 SHEET NO. 42 OF 222



PLAN

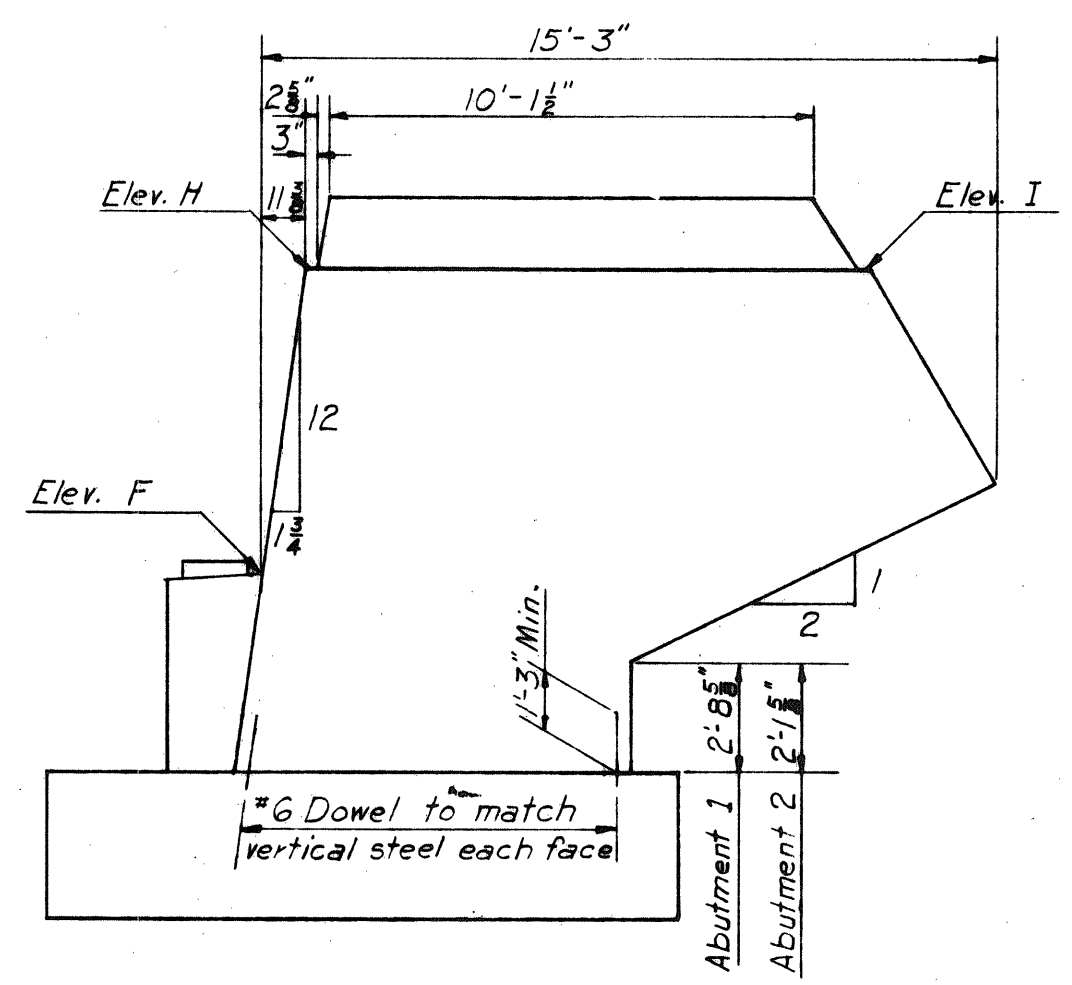


ELEVATION

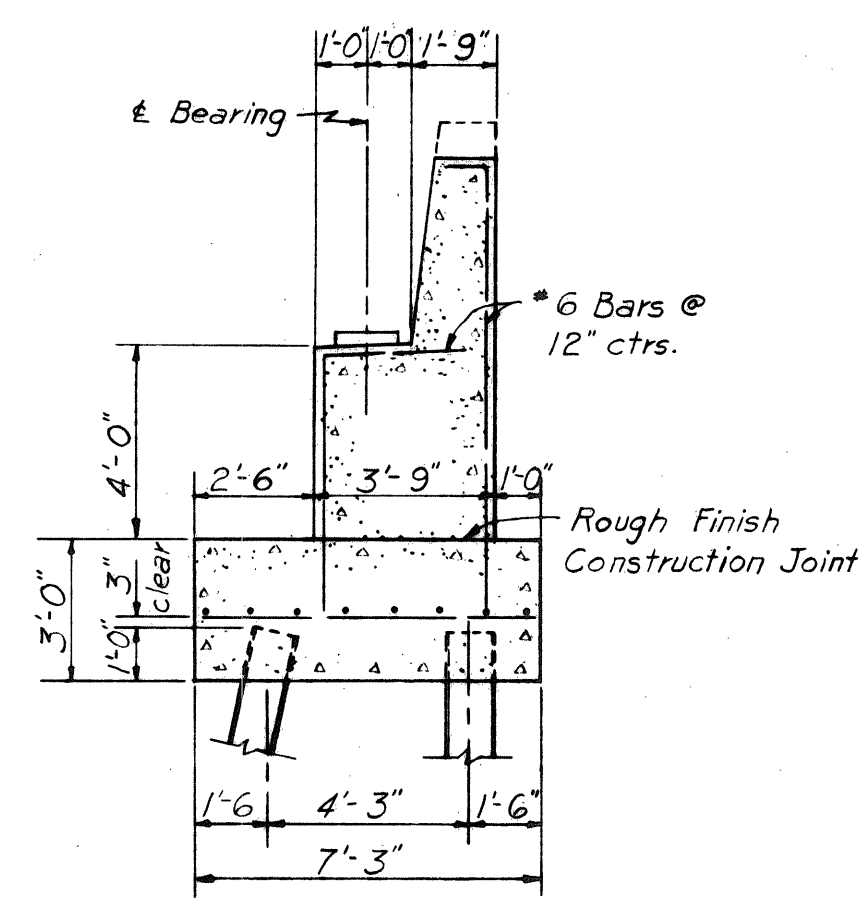


FOOTING PLAN

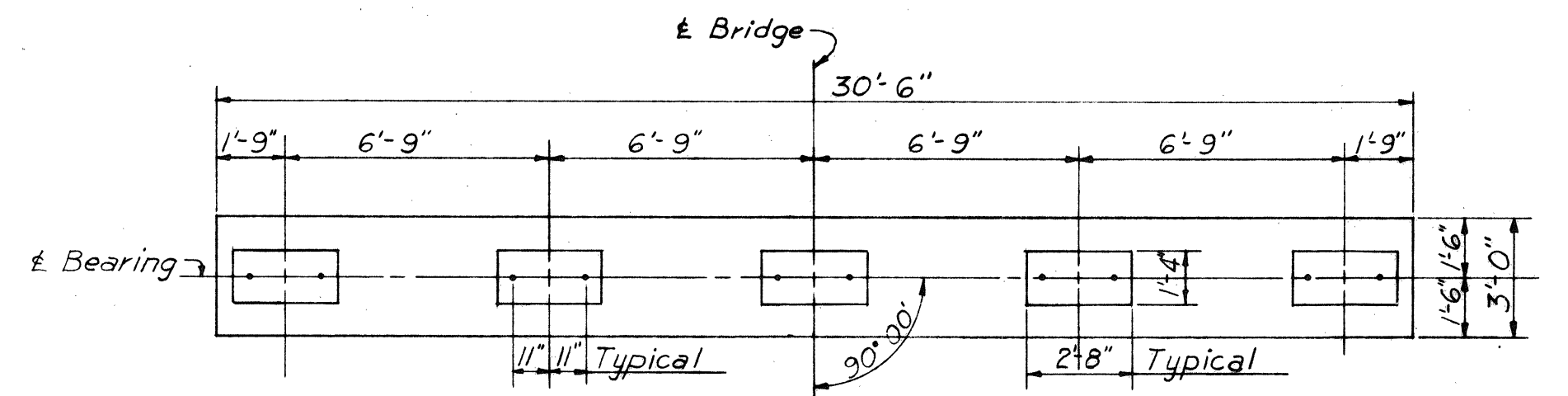
ELEVATIONS			
Point	ABUT. 1 E and W	ABUT. 2 E and W	
A	55.64	48.90	
B	55.75	49.01	
C	55.82	49.08	
D	55.75	49.01	
E	55.64	48.90	
F	55.56	48.81	
G	59.54	52.77	
H	62.10	55.27	
I	62.45	55.12	
J	48.48	41.73	



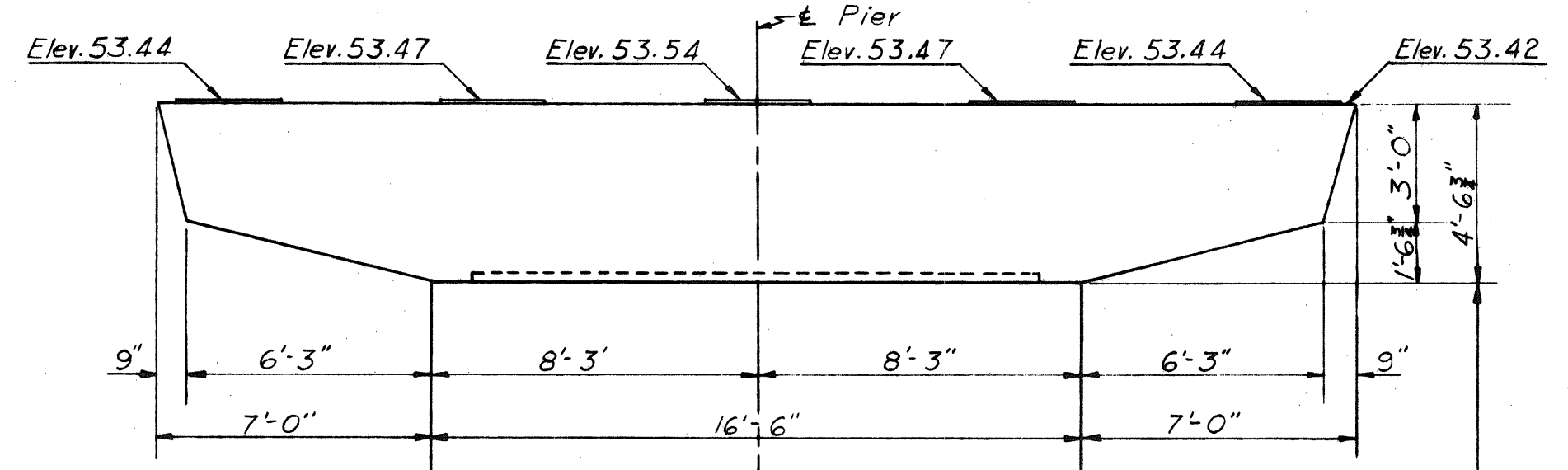
END ELEVATION



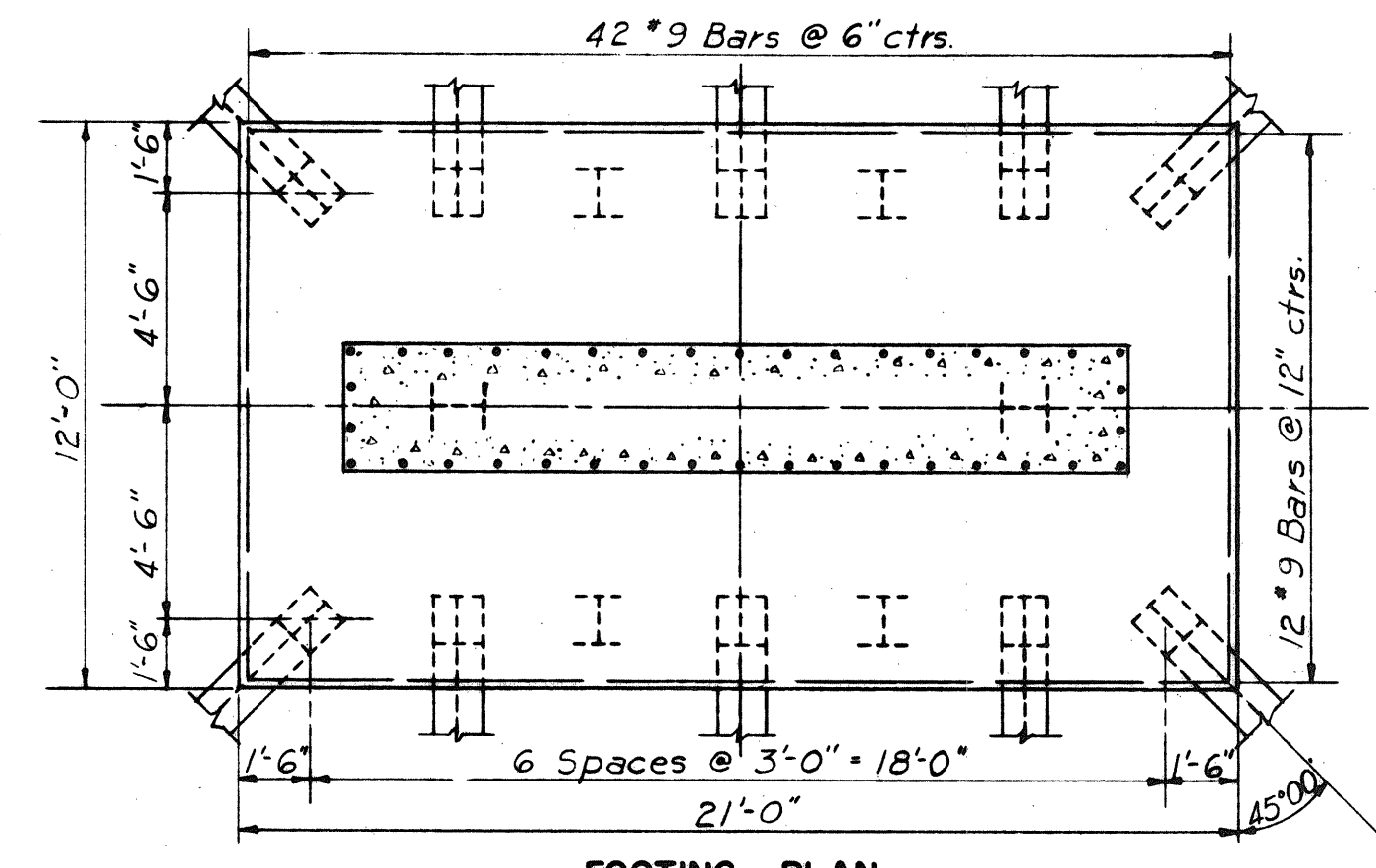
SECTION A-A



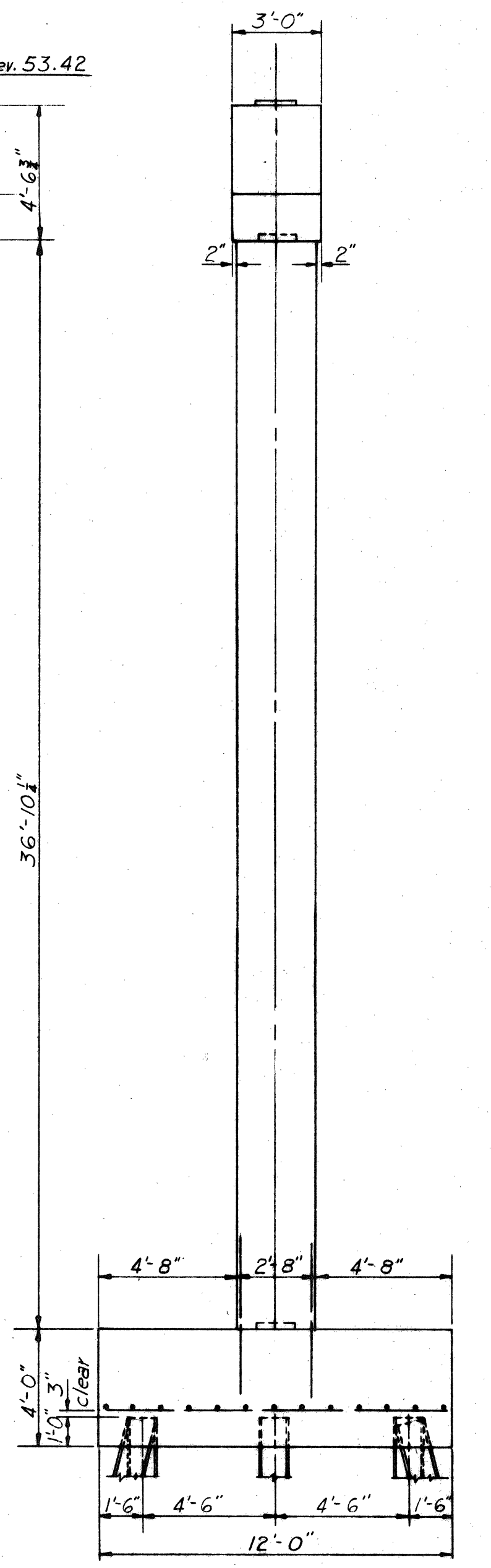
PLAN



ELEVATION



FOOTING PLAN



END ELEVATION

PIER I-W

Pier I-E is the same

MAINE TURNPIKE AUTHORITY MAINE TURNPIKE SECTION 2 — PORTLAND TO AUGUSTA	
STRUCTURE NO. 5 STROUDWATER RIVER STA. 2318 + 24 ABUTMENTS AND PIER I	TURNPIKE OVER SCALE: 3/4" = 1'-0" CONTRACT NO. _____
HOWARD, NEEDLES, TAMMEN & BERGENDOFF CONSULTING ENGINEERS NEW YORK KANSAS CITY	SHEET NO. 50 OF 302

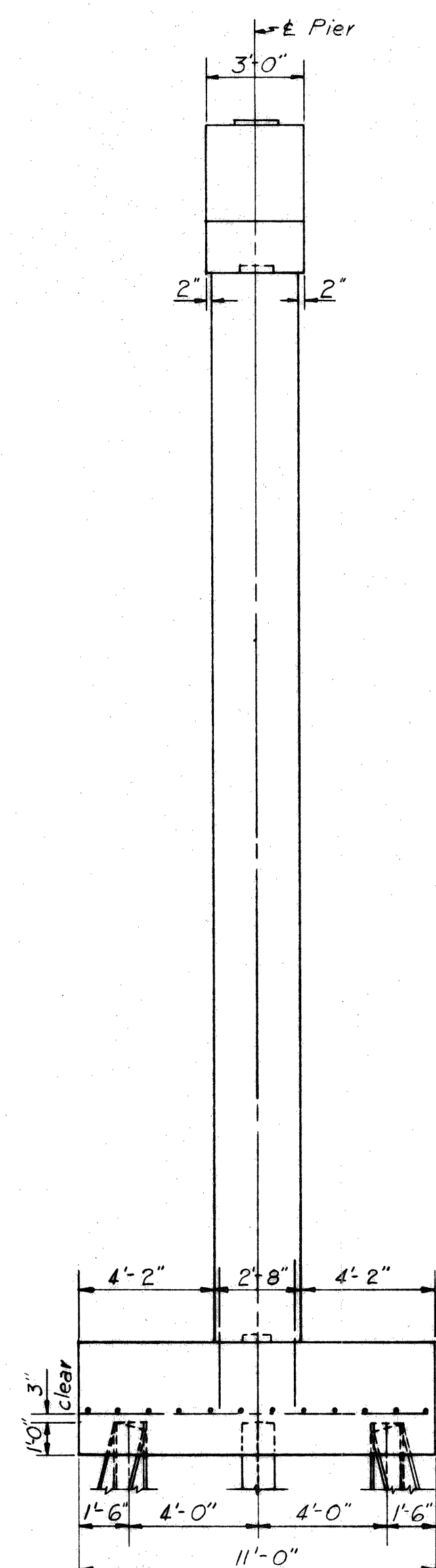
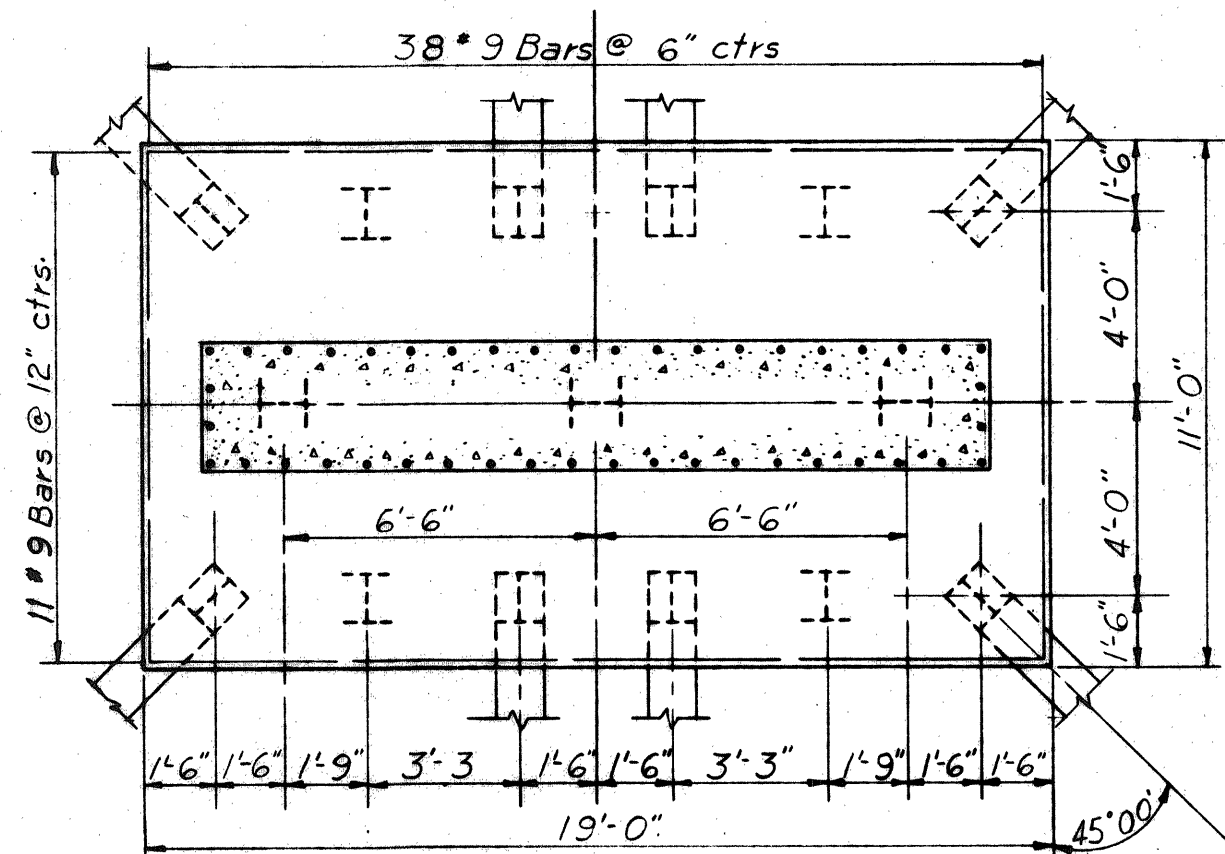
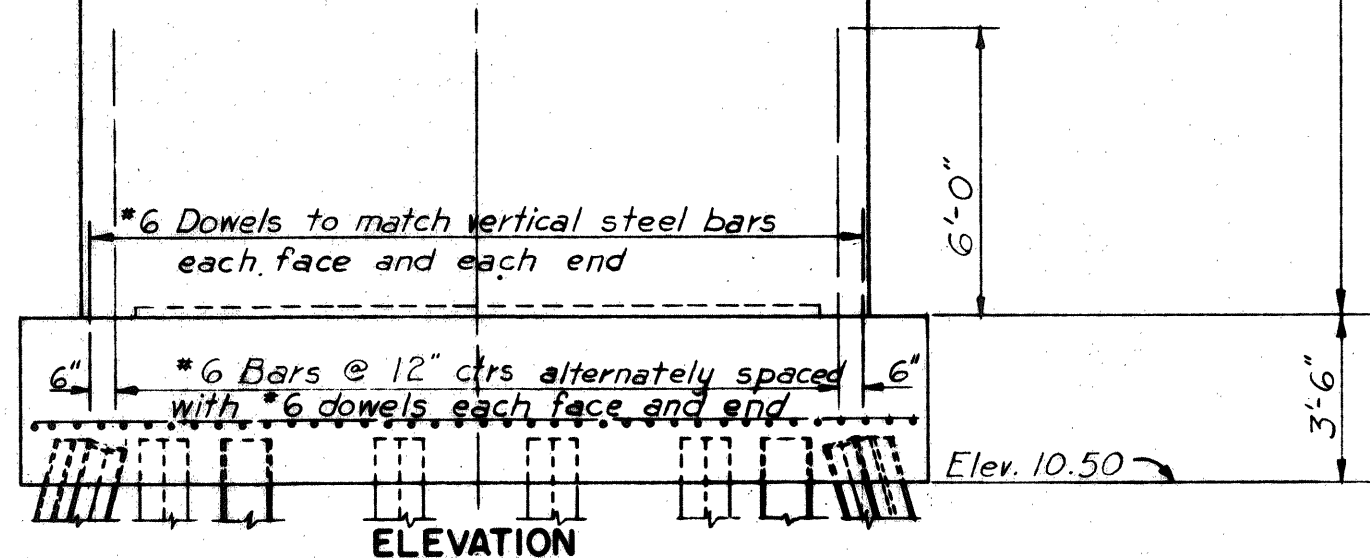
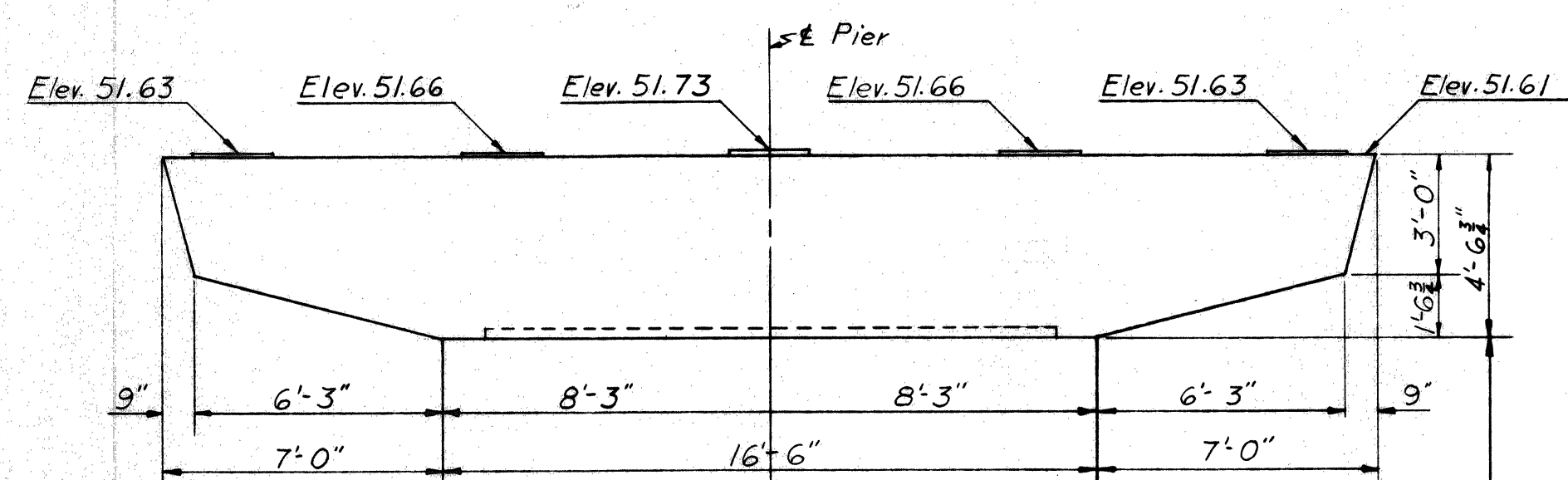
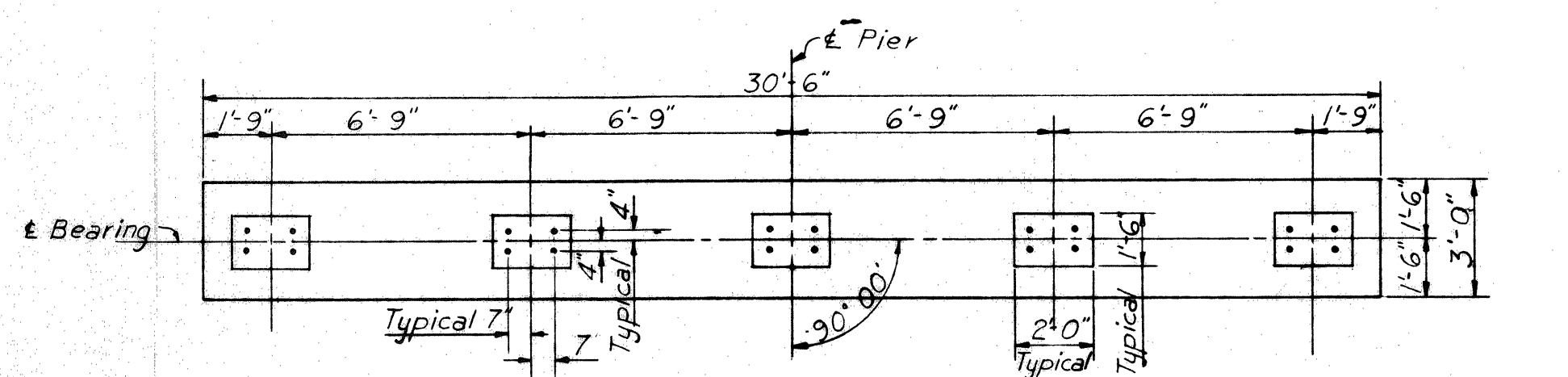
DRAWING 5.03.05

BY	DATE	REVISION	BY	DATE
MADE	LWL	3-19-54		
TRACED				
CHECKED	WEG	3-23-54	As-Built	HBH 1/24/54
IN CHARGE OF				

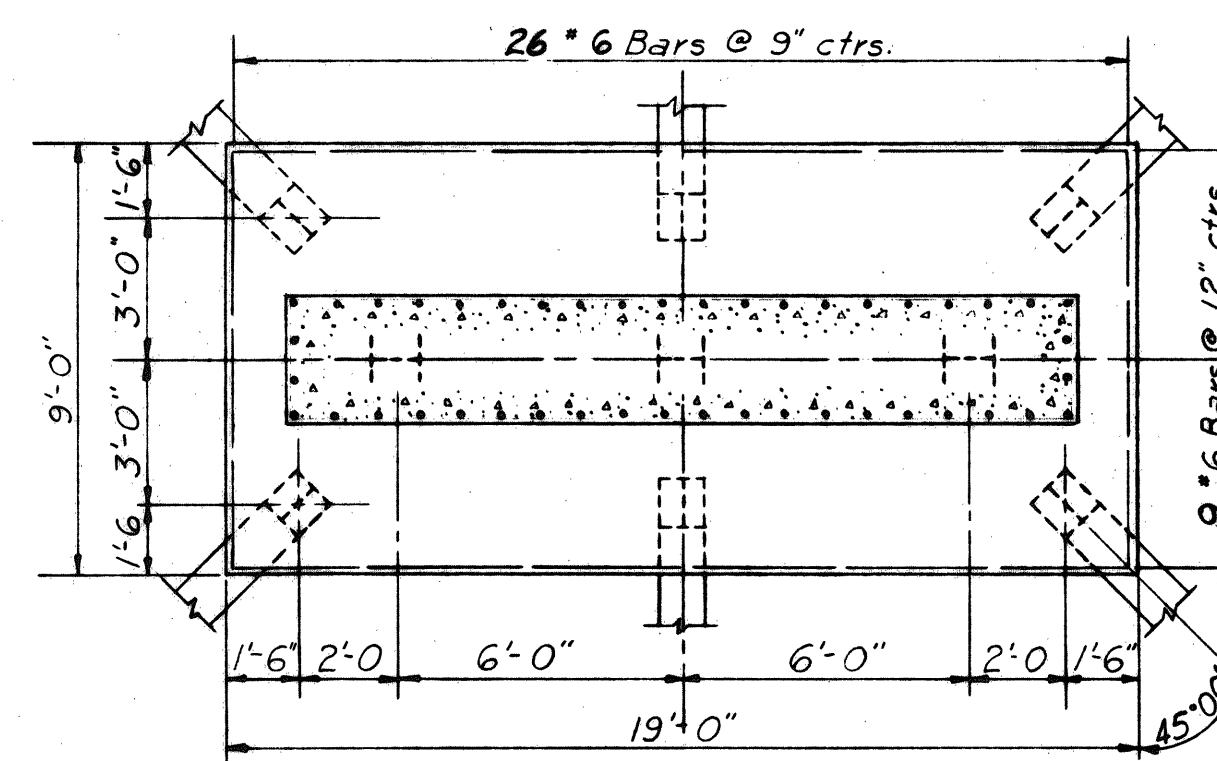
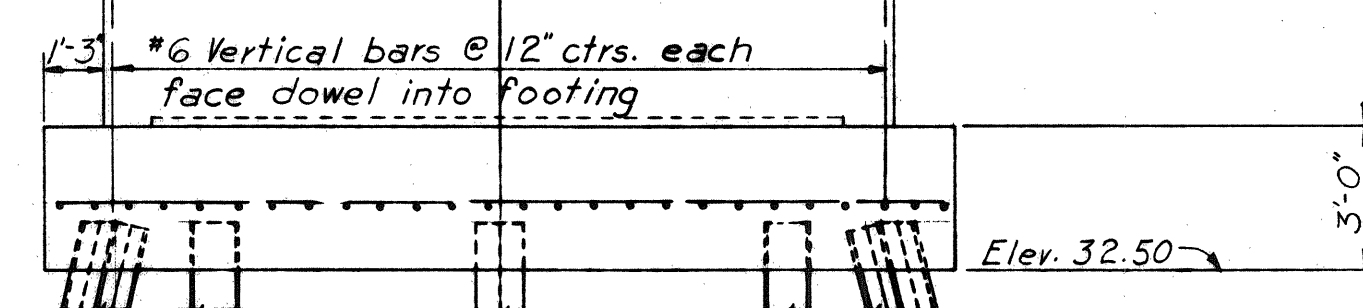
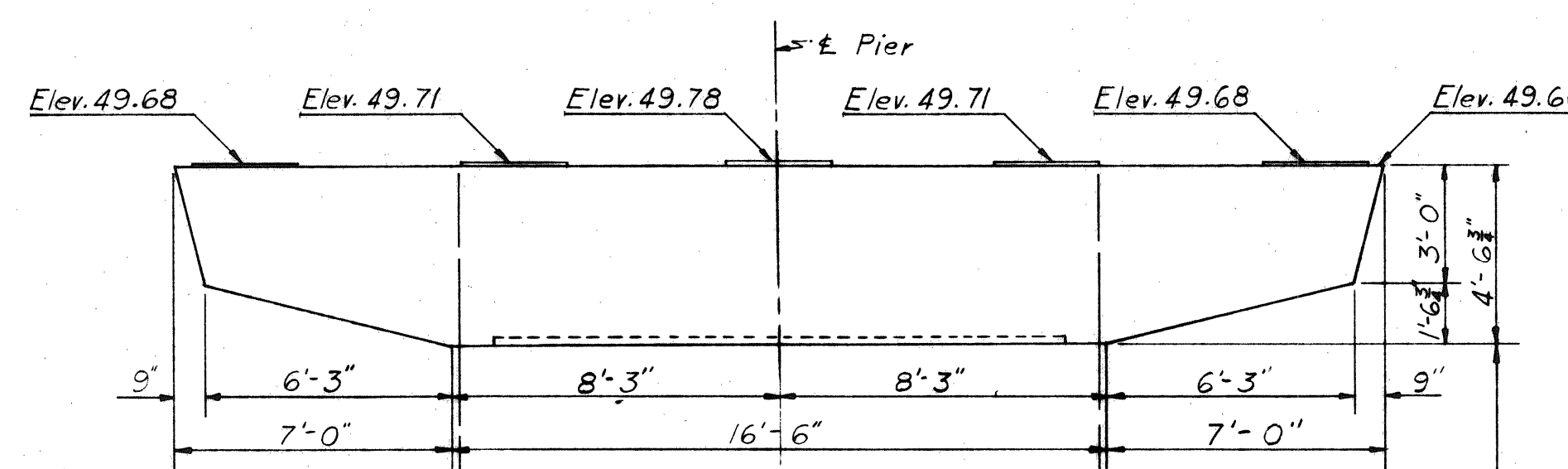
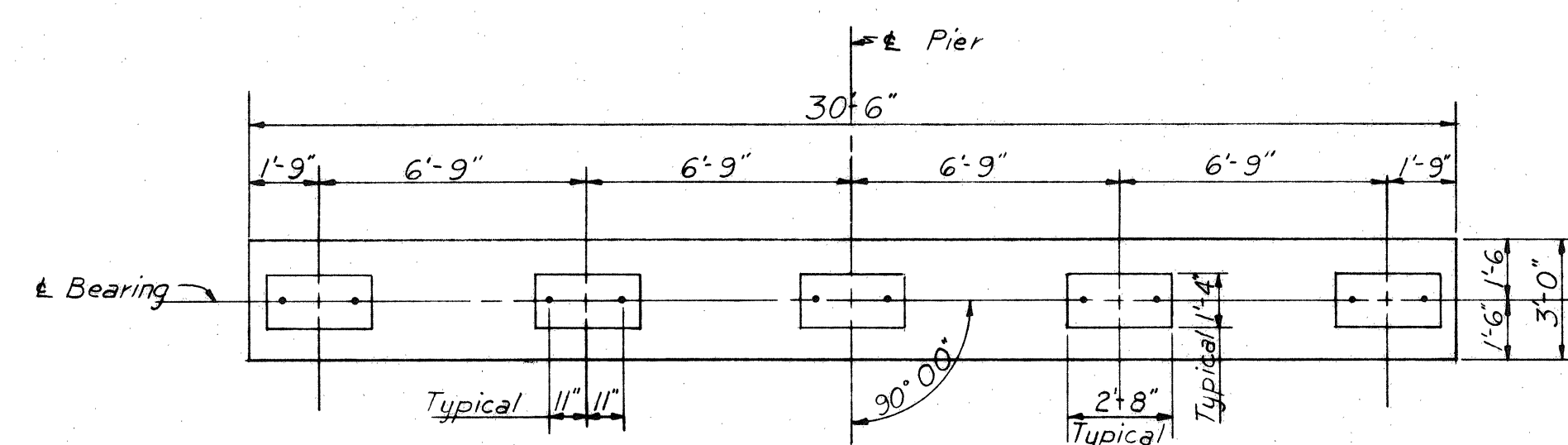
ABUTMENTS 1-W

Abutment 1-E is the same
 Abutment 2-W and 2-E
 similar but opposite hand.

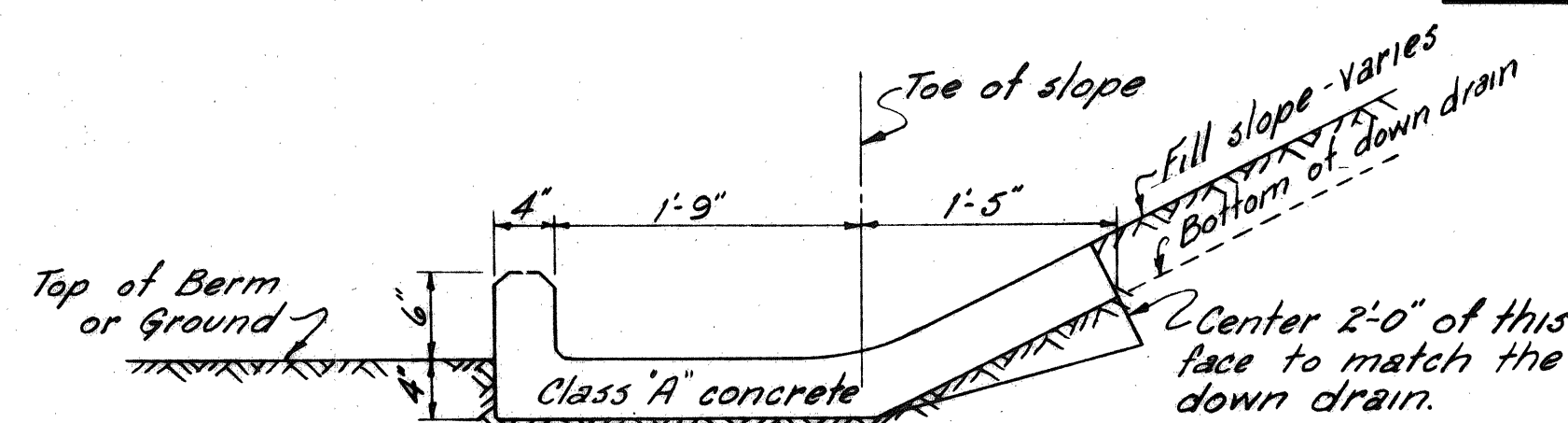
Note: Abutment piles shall be 10BP42.
 Pier piles shall be 12BP53.
 Batter piles 3" per foot as shown.



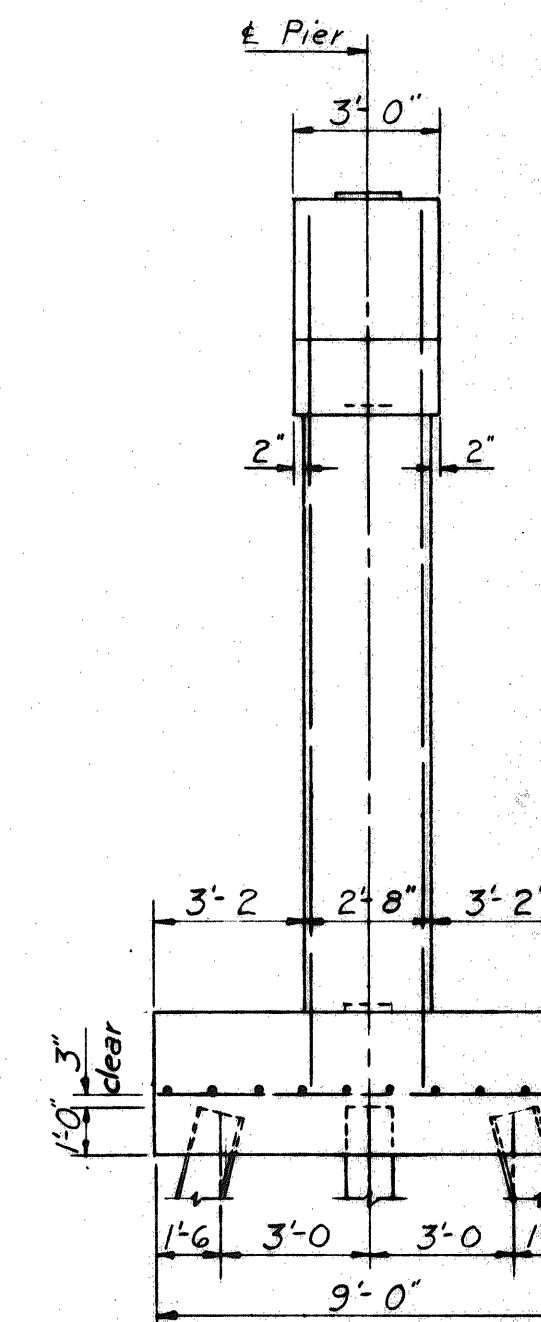
PIER 2-W
 Pier 2-E is identical



PIER 3-W
 Pier 3-E is identical



DRAINAGE APRON
 For details not shown see Standard Drawing No. 3. Scale 1" = 1'-0"



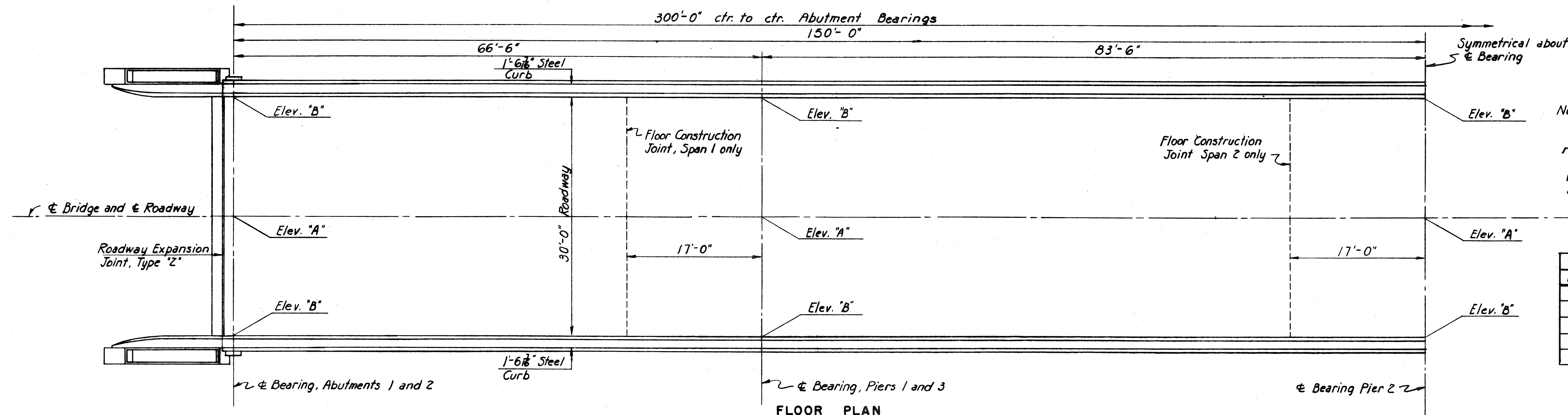
END ELEVATION

Note:
 Pier piles shall be 12 BP53.
 Batter piles 3" per foot as shown.

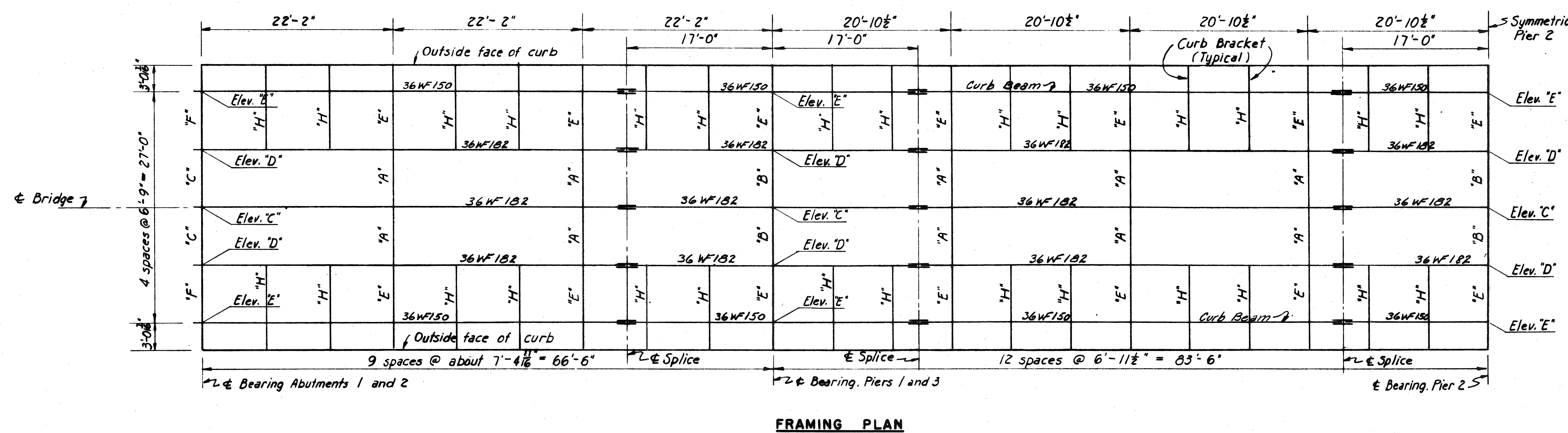
DRAWING 5. 04. 05			
BY	DATE		
MADE	LWL	3-20-54	
TRACED			
CHECKED	WEG	3-23-54	1 As-Built HBH HBSG
IN CHARGE OF	No.	REVISION	BY DATE

FOOTING PLAN

MAINE TURNPIKE AUTHORITY			
MAINE TURNPIKE			
SECTION 2 — PORTLAND TO AUGUSTA			
STRUCTURE NO. 5	TURNPIKE OVER		
STROUDWATER RIVER			
STA. 2310+24			
PIER 2 AND PIER 3			
HOWARD, NEEDLES, TAMMEN & BERGENDOFF		SCALE: 1/4" = 1'-0"	
CONSULTING ENGINEERS		CONTRACT NO.	
NEW YORK	KANSAS CITY	SHEET NO. 57	of 322

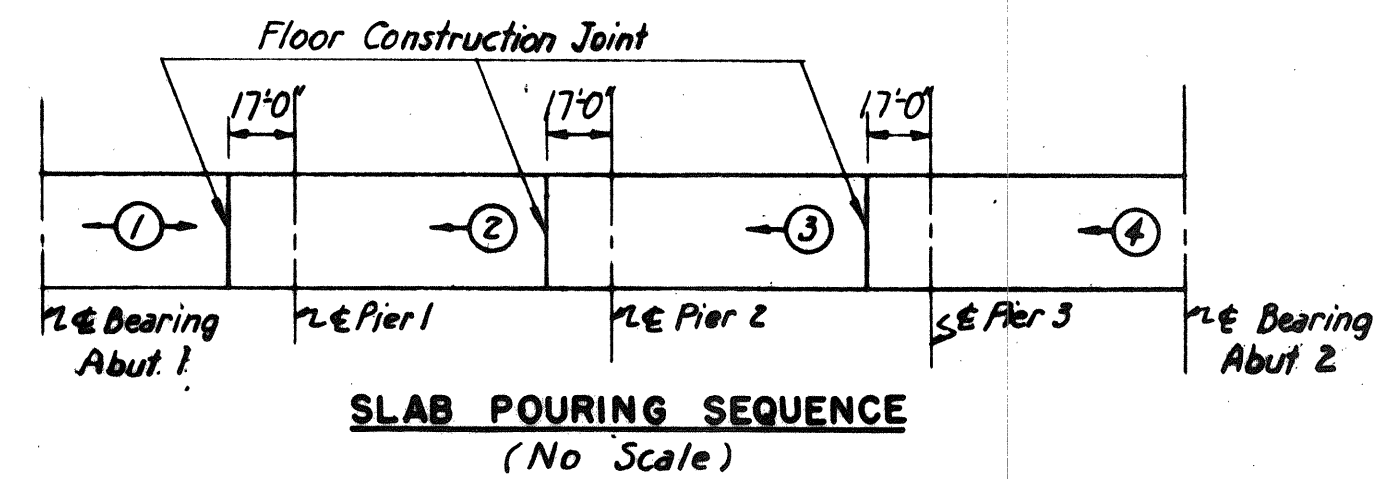
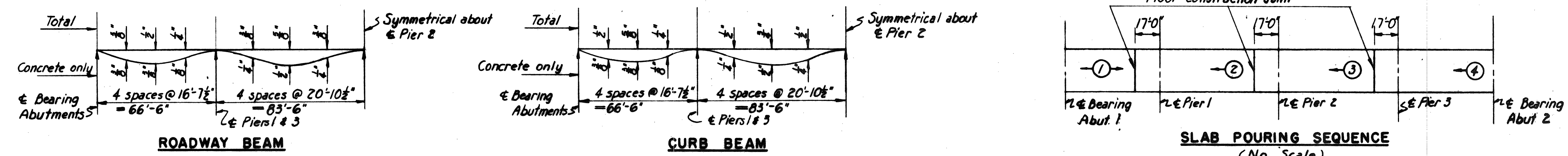
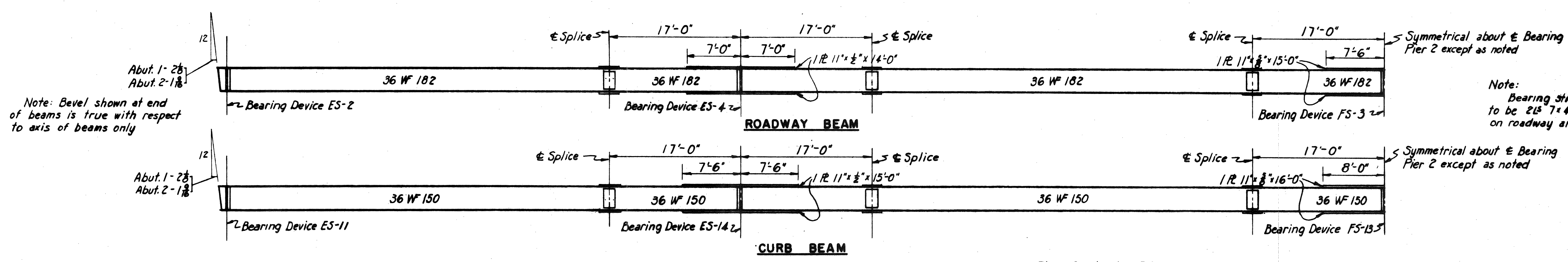


TOP OF ROADWAY ELEVATIONS		
LOCATION	"A"	"B"
Abut. 1	60.45	60.29
Pier 1	58.50	58.34
Pier 2	56.41	56.25
Pier 3	54.73	54.58
Abut. 2	53.70	53.54



Note:
Elevation shown are to top Hange of beams
Diaphragms are noted thus "A" "B" "C" "D" "E"
Curb bracket is noted thus "H". For details see Std. Dwg. No. 20

TOP OF BEAM ELEVATIONS			
LOCATION	"C"	"D"	"E"
Abut. 1	59.63	59.58	59.51
Pier 1	57.71	57.64	57.57
Pier 2	55.62	55.53	55.47
Pier 3	53.94	53.87	53.80
Abut. 2	52.91	52.84	52.77



DRAWING 5.05.05

BY	DATE				
MADE	R. K.	3-17-54			
TRACED					
CHECKED	W.E.G.	9-22-54	As-Built	H.B.W.	1/24/54
IN CHARGE OF	IDSK				

MAINE TURNPIKE AUTHORITY
MAINE TURNPIKE
SECTION 2 - PORTLAND TO AUGUSTA

STRUCTURE NO. 5 TURNPIKE OVER
STROUDWATER RIVER
STA. 2318+24
SUPERSTRUCTURE

HOWARD, NEEDLES, TAMMEN & BERGENDORFF
CONSULTING ENGINEERS
NEW YORK KANSAS CITY

SCALE: 1/4" = 1'-0"
CONTRACT NO. _____
SHEET NO. 52 OF 382