

2019 CONSTRUCTION PROJECT



Plains Road Bridge, Litchfield



Project Highlights

- \$475,000 project part of \$3.6 million contract
- Awarded to Scott Construction Corporation
- Replacement of the bridge wearing surface
- Rehabilitation of the bridge substructure
- Bridge to be closed for approximately 3 weeks
- Closure scheduled to begin Monday, May 6
- Detour route will be signed during closure

This project consists of repairs to the Plains Road Bridge that crosses over the Turnpike at Mile 96.5 in the Town of Litchfield.

Repairs to the bridge will include substructure rehabilitation, roadway approach work, replacement of the bridge wearing surface and bridge joint repairs.

The bridge will remain open during much of the construction. The contractor will be allowed to close the bridge to traffic for up to three weeks to replace the bridge joints and wearing surface.

The closure is scheduled to begin on Monday, May 6, 2019. During the closure, a detour route will be signed.

The project completion is scheduled for late July 2019.

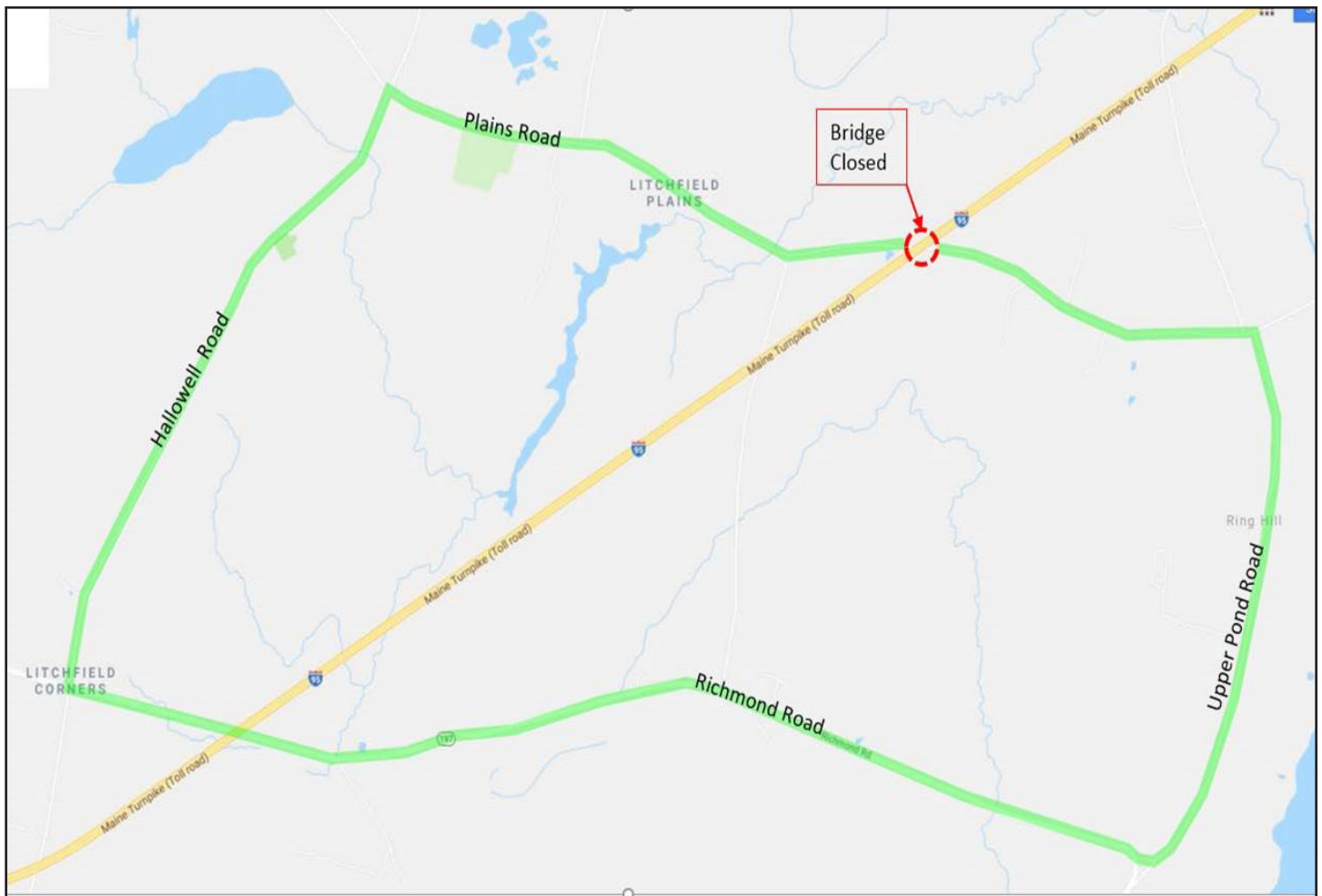
Looking for more information on Turnpike projects?

Visit our website at www.MaineTurnpike.com or contact:

Erin Courtney, MTA Public Relations phone: 207.482.8119 email: ecourtney@maineturnpike.com



Plains Road Detour Route



The Plains Road Bridge carries approximately 765 vehicles per day over the mainline of the Maine Turnpike. Traffic will be routed around the site via a detour using Upper Pond Road, Richmond Road and Hollowell Road. The detour as signed is approximately 9 miles long.