

MAINE TURNPIKE AUTHORITY

ADDENDUM NO. 6

CONTRACT 2022.04

BRIDGE REPAIRS

ROUTE 236 UNDERPASS (MM 1.25)

ROUTE 1 OFF-RAMP (RAMP J) UNDERPASS (MM 1.50)

ROUTE 1 ON-RAMP (RAMP H) UNDERPASS (MM 1.60)

WILSON ROAD UNDERPASS (MM 2.00)

SPRUCE CREEK OVERPASS (MM 2.20)

LITTLEFIELD ROAD (MM 17.30)

EMERGENCY VEHICLE RAMPS

LITTLEFIELD ROAD (MM 17.30)

Questions:

The following are questions submitted to the Maine Turnpike Authority in writing. Answers to the questions are noted. Bidders shall utilize this information in preparing their bid.

Question 1: Please provide the bearing reactions for all jacking locations. It would also be helpful to know the breakdown of dead load, live load, impact, etc.

Response: *Per Special Provision Section 524 – 524.03, Design: “As part of the jacking system design computations, the Contractor shall determine all applicable live load and dead load reactions based on the proposed jacking scheme. The Route 236 Underpass and Spruce Creek Overpass are not anticipated to be closed to live load traffic and the proposed jacking scheme shall be capable of supporting live load traffic as noted in this section.”*

To aid in the determination of the loads, excerpts of the as-built plans for the Route 236 Underpass, Ramp J Underpass, and Spruce Creek Overpass are attached. The completeness and accuracy of these plans is not guaranteed.

After award of the contract, the Turnpike will assist the Contractor with the determination of the bearing reactions based on the Contractor’s proposed means, methods, and jacking scheme, if requested.

Attachments

- Excerpts from the Route 236 Underpass as-built plans (3 pages)
- Excerpts from the Route 1 Off-Ramp (Ramp J) Underpass as-built plans (2 pages)
- Excerpts from the Spruce Creek Overpass as-built plans (3 pages)

Note: The above items shall be considered as part of the bid submittal.

The total number of pages included with this addendum is thirteen (13).

All bidders are requested to acknowledge the receipt of the Addendum No. 6 by signing below and faxing this sheet to Nate Carll, Purchasing Department, (207) 871-7739. Bidders are also required to acknowledge receipt of this Addendum No. 6 on Page P-11 of the bid package.

Business Name

Print Name and Title

Signature

Date

February 18, 2022

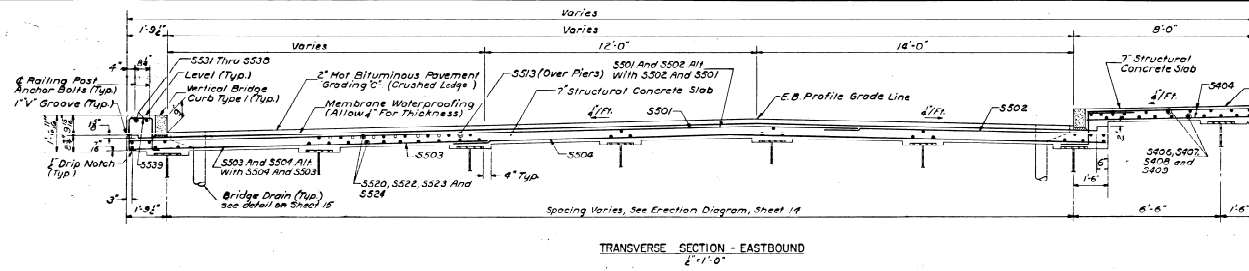
Very truly yours,

MAINE TURNPIKE AUTHORITY

Purchasing Manager
Maine Turnpike Authority

Excerpts from Route 236 Underpass As-Builts

DATE	BY	CHKD	APP'D
2-28-11 (4)	37	1/32	

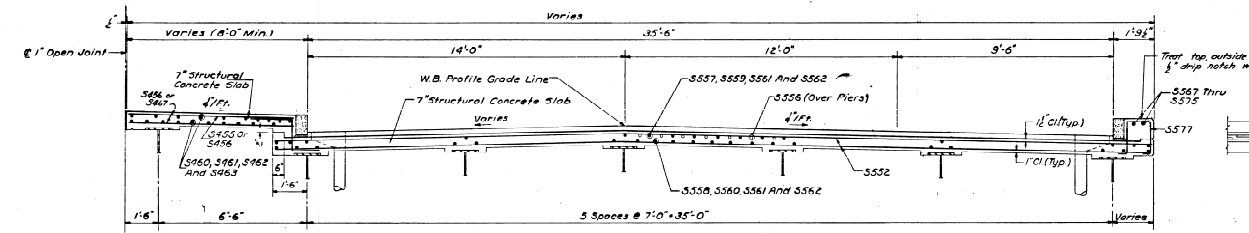


TRANSVERSE SECTION - EASTBOUND
2'-11'-0"

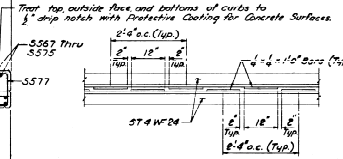
Median to be finished in accordance with Section 504.16, State of Maine Standard Specifications, Highways and Bridges, Revision of June 1988. (Curb and Sidewalk Finish)

Treat median concrete with Protective Coating for Concrete Surfaces.

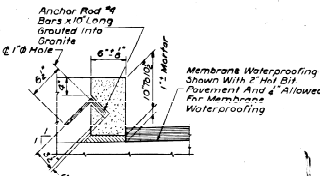
10" on Shoulder across EB4 WB on the etc 250 Bridge. It was merely notification of a possible condition in the shoulder areas that could not be noticed accurately due to traffic. It was recommended that those areas be sealed to prevent penetration of water and/or soil affecting the surface.



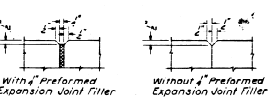
TRANSVERSE SECTION - WESTBOUND
2'-11'-0"



PLAN - ARMORED JOINT
3'-11'-0"



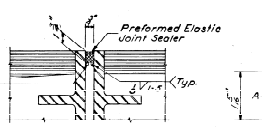
TYPICAL CURB SECTION
1'-0"



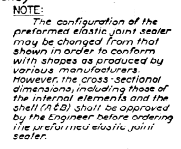
With 4" Preformed Expansion Joint Filler
Without 4" Preformed Expansion Joint Filler

1" V GROOVES
3'-11'-0"

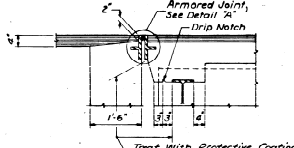
(For Details not shown see Transverse Section - Eastbound)



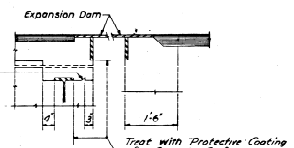
PREFORMED ELASTIC JOINT SEALER
4'-0"



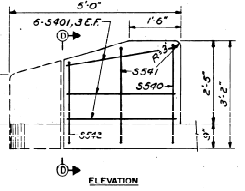
EXPANSION DAM
1'-0"



SECTION A-A
1'-0"

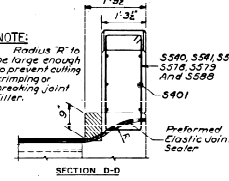


SECTION B-B
1'-0"



ELEVATION

END POST DETAIL
(As Required)
3'-11'-0"



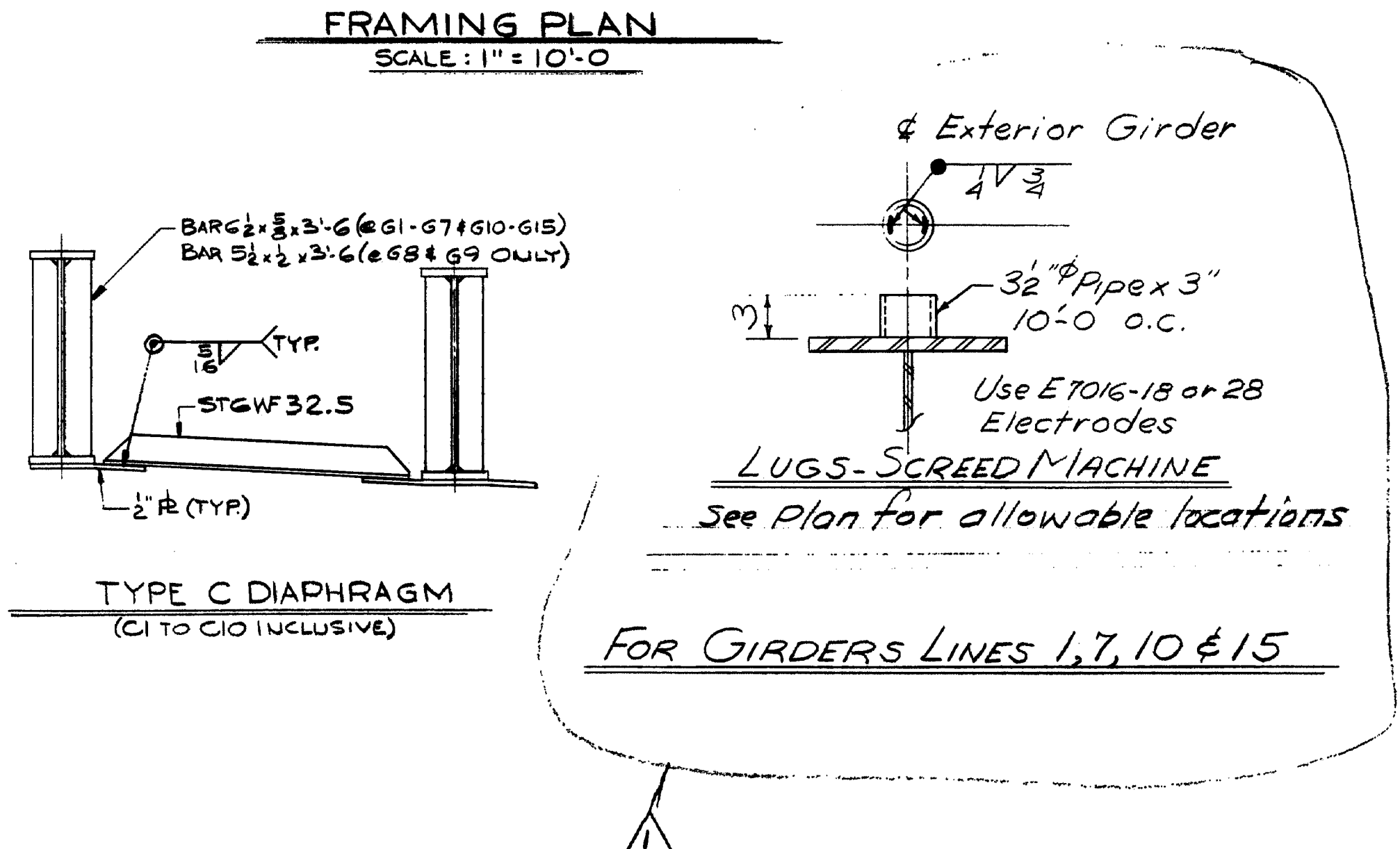
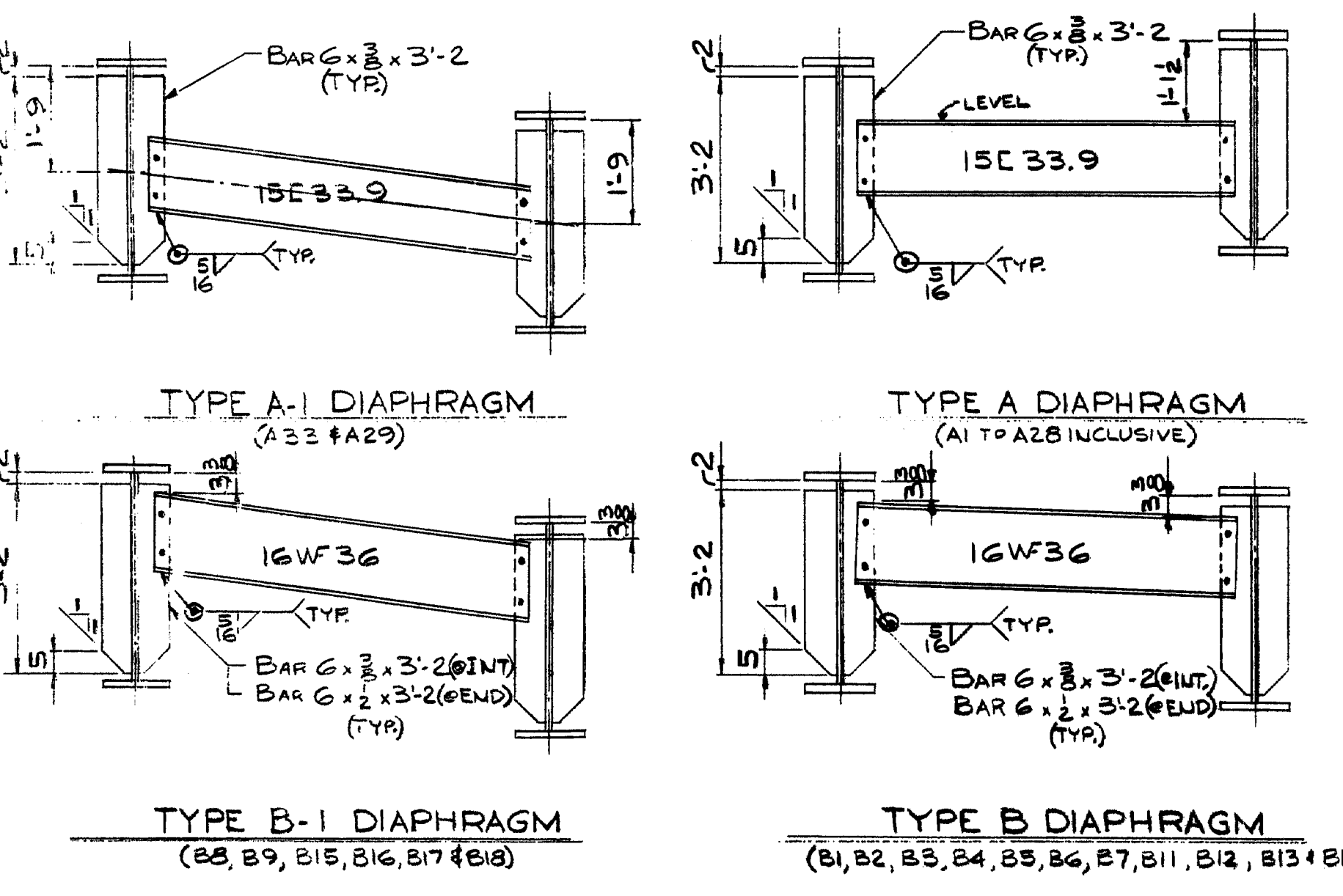
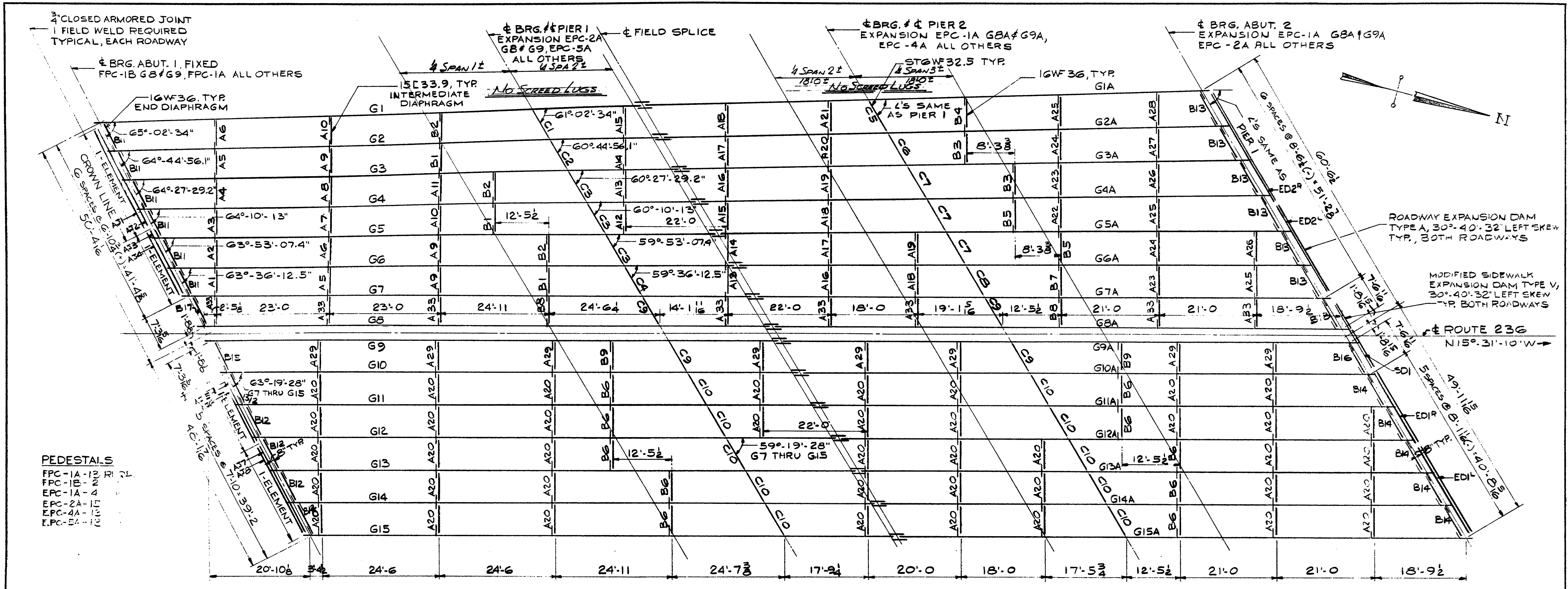
SECTION D-D
1'-0"

BRIDGE DRAIN NOTES:
1. 10 Bridge Drains required, 5 each roadway, for approximate locations, see Sheet 10.
2. Drains shall be placed so they are at least 5' clear of abutments, exact positions to be determined in field.

DESIGN NO. 13	DETAIL - R.B.T.	DATE	NO.
CONTRACT - R.E.P.		2-28-11	37
STATE HIGHWAY COMMISSION			
ROUTE 236			
OR			
INTERSTATE 95			
IN THE TOWN OF			
KITTERY			
YORK COUNTY			
SUPERSTRUCTURE DETAILS			
SHEET 17 OF 21 AUGUSTA, MAINE AUGUST 1, 1997			

HOWARD, NEEDLES, TAMMEN & BERGENDOFF
CONSULTING ENGINEERS
700 STATE STREET
BOULDER, COLORADO 80502

Contract 2022.04
SUPERSTRUCTURE DETAILS
Addendum No. 6
KITTERY



NOTE: FORM BRACKET HOLES ARE TO BE PLUGGED WITH 3/8" x 1 1/2" CARRIAGE BOLTS, HEADS TO BE ON OUTSIDE. HOLES ARE TO BE COMPLETELY COVERED. TACK WELD NUTS TO GIRDER WEB.

SPLICE NOTE: IN ORDER TO MAINTAIN THE 4" GAP SHOWN, THE WEBS & FLANGES ARE TO BE CUT (WITH THE USE OF A MECH. GUIDE) AT THE TIME OF SHOP ASSEMBLY OF THE FIELD SPLICES.

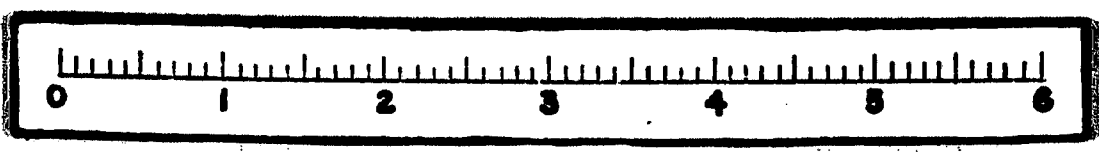
HOLES TO BE DRILLED FULL SIZE FROM THE SOLID WITH ALL THE MATERIAL IN EXACT RELATIVE FIELD POSITION FOR ERECTION.

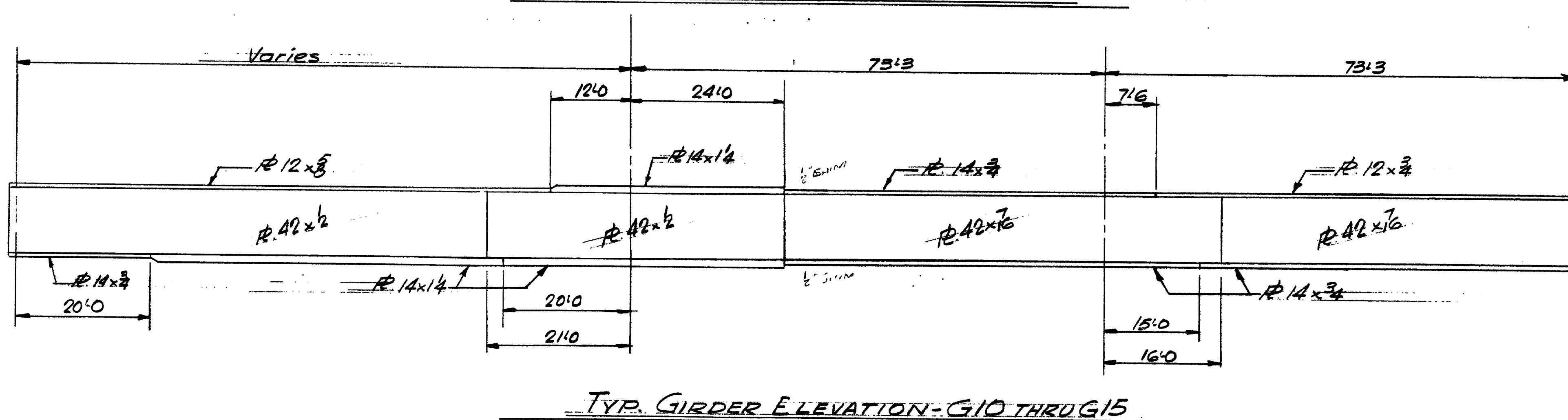
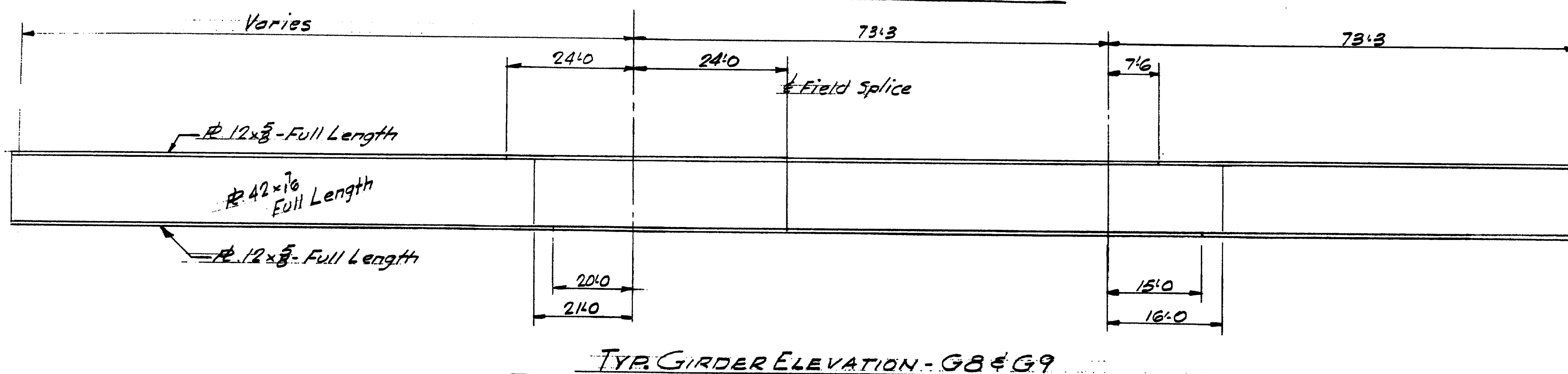
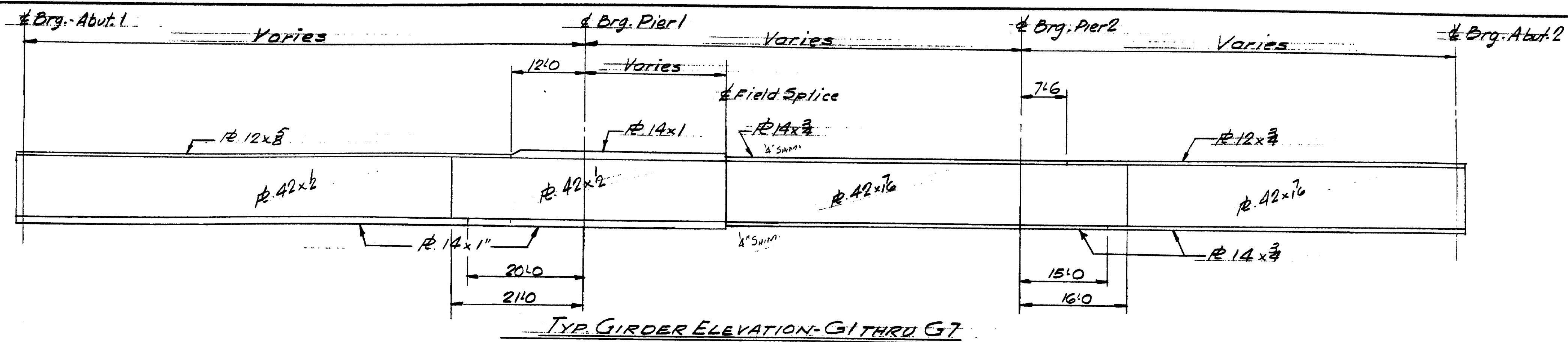
BOLTS @ FIELD SPLICES ARE 3/4" HIGH STRENGTH (A193) (SEE DETAILS OF SPLICES ON DRGS. C2 - C31)

ERECTION BOLTS AT WELDED CONNECTIONS ARE 3/4" (A193)

FRAMING PLAN		Proj. No. I-95	
REV.	DATE	BY	CHKD.
2p	12-3-70	FA	
4	1-14-71	SHOP	
8	1-14-71	STATE	
2	1-26-71	CUST	
8	3-30-71	STATE	

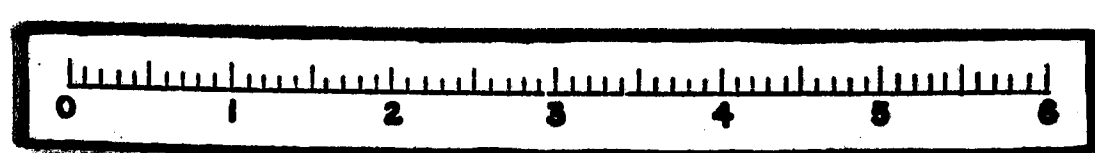
Bancroft & Martin Inc. South Portland, Maine 04106	
JOB: RT. 236 OVER I-95 KITTELY, MAINE	
CUSTOMER: CALLAHAN BROS.	
DESIGNER: M. S. H. COMM., BRIDGE DIV.	
ORDER NO.	JOB NO.
70-189	AI





APPROVED 7-17-70

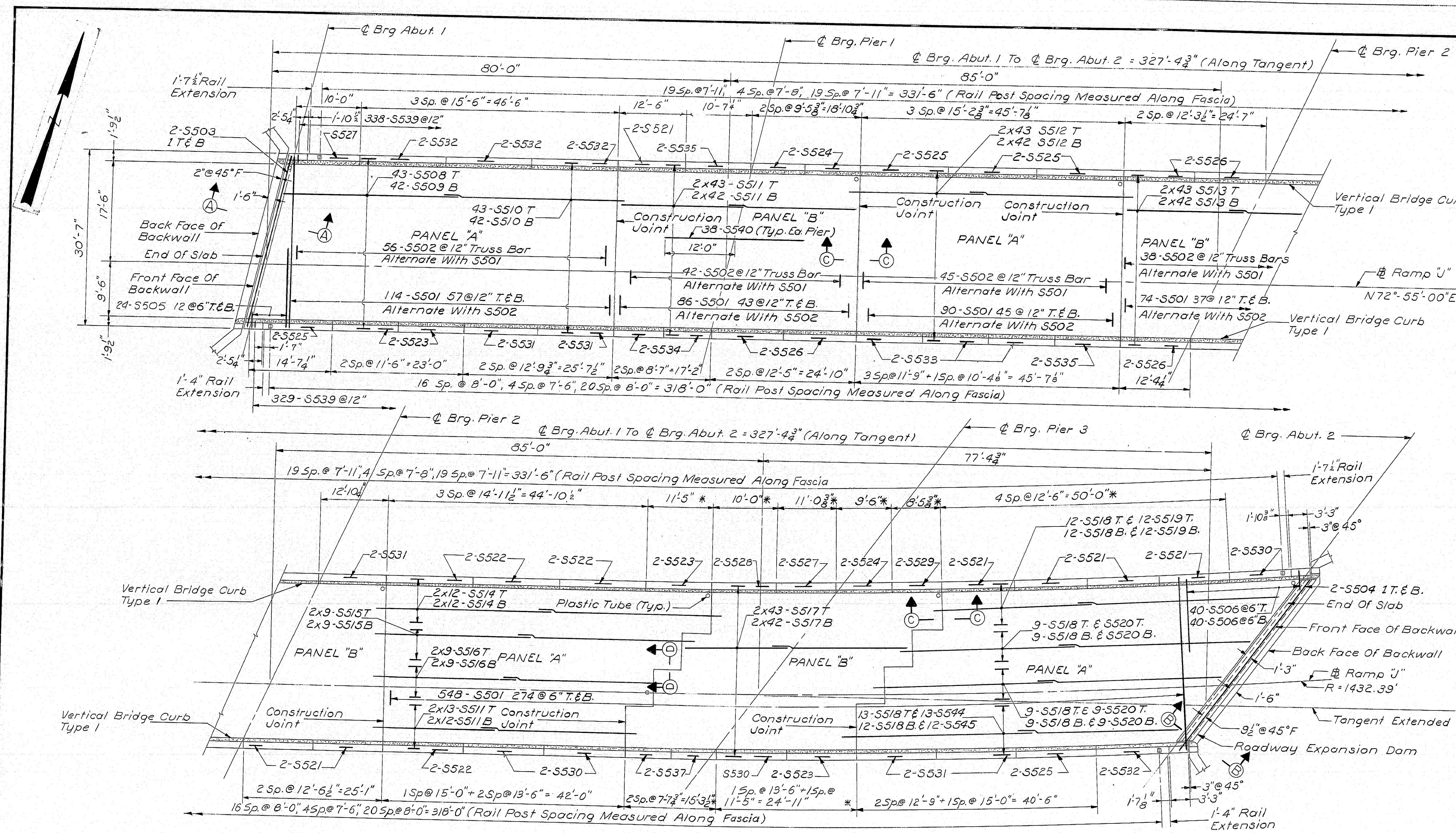
FLANGE & WEB BUTT LOCATIONS			
PRINT DIST.			
FA	7-2-70	3	Bancroft & Martin Inc.
STATE	7-16-70	8	South Portland, Maine 04106
JOB:		RT. 236 OVER I-95	
		KITTEBY, MAINE	
CUSTOMER:		CALLAHAN, BROS.	
DESIGNER:		M. S. H. C. BRIDGE DIV.	
REV.	7-16-70	ORDER NO.	JOB NO.
CHECKED			DRAWING NO.
DRAWN	7-17-70 JRE		70-189 M1



118-75

Excerpts from Route 1 Off-Ramp (Ramp J) Underpass As-Builts

B. P. R. REG. NO.	STATE	PROJECT NUMBER	SHEET NO.	TOTAL SHEETS
1	MAINE	7-95-1(5)	49	199

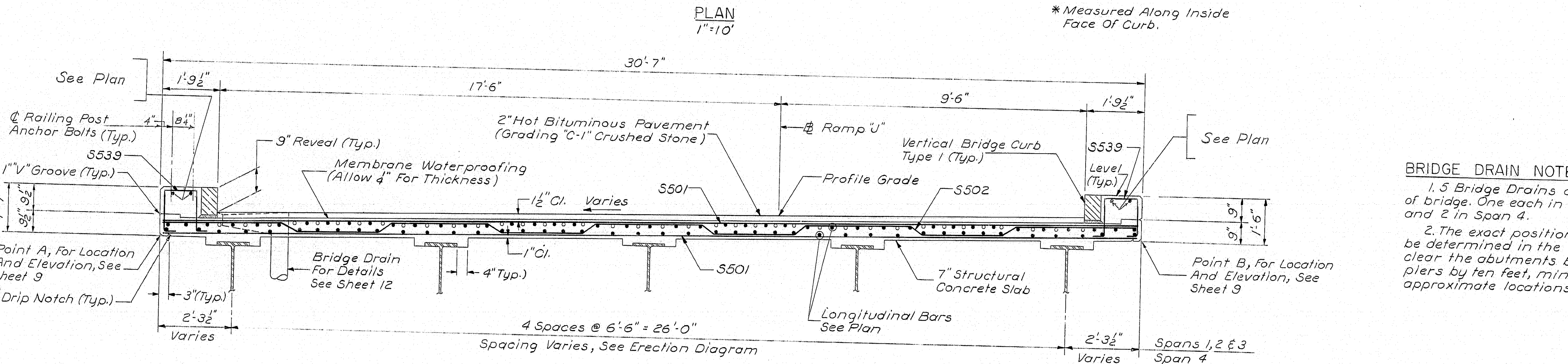


GENERAL SUPERSTRUCTURE NOTES

- At all curb joints, break the bond between concrete surfaces with a suitable grade of clear oil. Form "V" grooves on outside face of curb and slab at each vertical joint. Provide joints in vertical bridge curb of curb construction joints.
- For Bridge Rail, see Standard Details BD 106-69
- Place concrete in "A" panels before placing concrete in "B" panels. See Note "A".
- Vertical bridge curb will be paid for under Item 609.13.
- Reinforcing steel to have 2" minimum cover unless otherwise shown.
- For Sections A-A, B-B, C-C and D-D, see Sheet 12.
- Coat the top and outside face of curb down to the 1/2" drip notch and all exposed faces of the end posts with Protective Coating for Concrete Surfaces.

NOTE "A"

As an alternate and at the contractors option, the deck concrete may be placed in one continuous operation, thus eliminating slab construction joints and waterstops. Continuous placing of concrete in the deck shall be made with the use of an acceptable set-retarder and liquid concrete curing compound. Payment for set-retarder shall be in accordance with Section 502 of the Standard Specifications. Payment for liquid curing compound to be incidental to the various contract items.



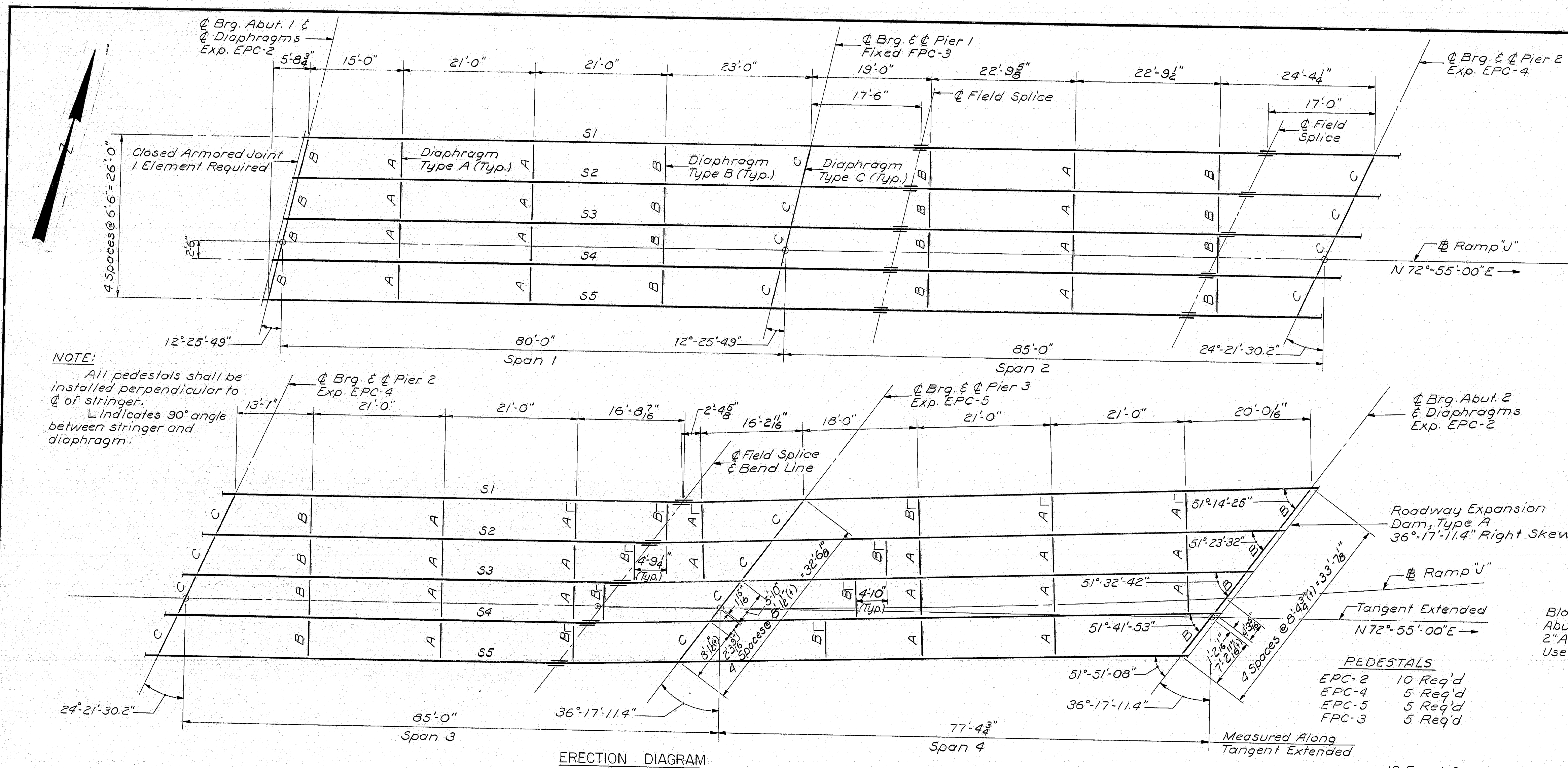
BRIDGE DRAIN NOTES

- 5 Bridge Drains on North Side of bridge. One each in Spans 1, 2 and 3, and 2 in Span 4.
- The exact position of drains is to be determined in the field. Drains shall clear the abutments by five feet and piers by ten feet, minimum. For approximate locations, see Sheet 1.

DESIGN - I.S.	DETAIL - R.D.F.	BRIDGE NO.
TRACE - R.E.F.	CHECK - R.E.F.	106-69
STATE HIGHWAY COMMISSION		
BRIDGE DIVISION		
RAMP "J"		
OVER		
ROUTE 1 S.B. & RAMP "M"		
IN THE TOWN OF		
KITTERY		
YORK COUNTY		
SUPERSTRUCTURE		
SHEET 11 OF 15 AUGUSTA, MAINE		
183-11 KITTERY (5)		

HOWARD, NEEDLES, TAMMEN & BERGENDOFF
CONSULTING ENGINEERS
NEW YORK BOSTON KANSAS CITY

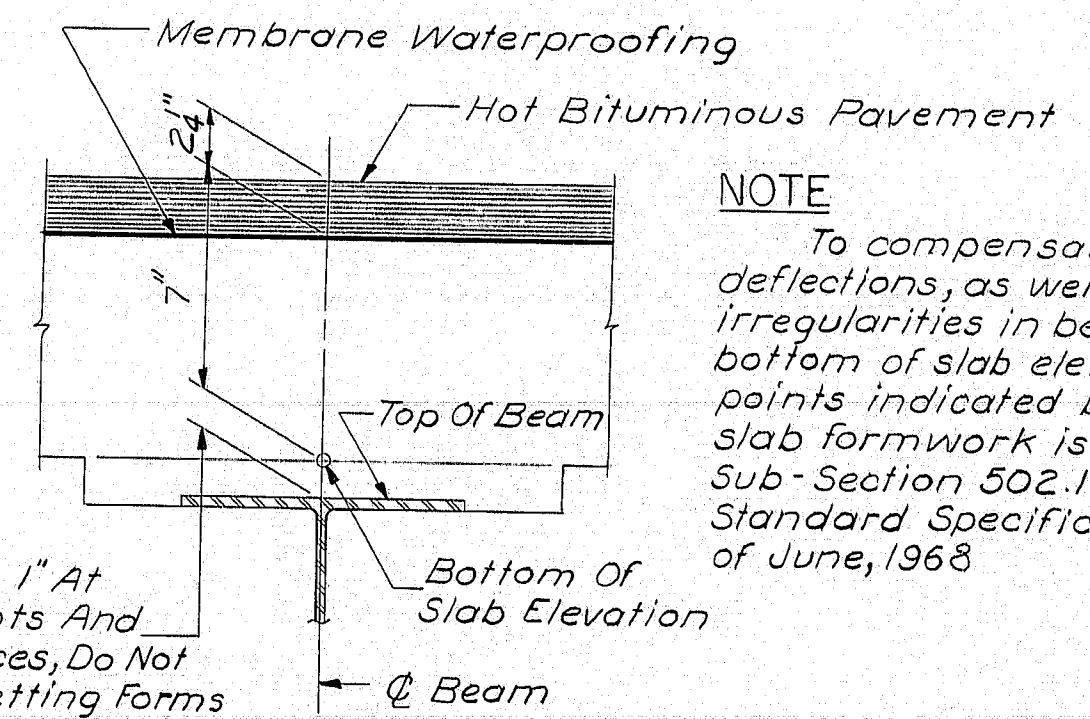
B. R. R. REG. NO.	STATE	PROJECT NUMBER	SHEET NO.	TOTAL SHEETS
1	MAINE	1-95-1(5)	47	199



REFERENCES
 Splices: See Standard Details Sheet BD103-64.
 Pedestals: See Standard Details Sheet BD101-70.
 Expansion Joints: See Standard Details Sheet BD105-64, and Sheet 12.
 Armored Joint, Shear Connector and Diaphragms: See Standard Details Sheet BD104-66 and Sheet 10.
 For additional steel details, see Sheet 10.

SPECIFICATIONS
Fabrication and Erection: State of Maine Standard Specifications, Highways and Bridges, Revision of June 1968.
Design and Detail: A.A.S.H.O. Standard Specifications for Highway Bridges of 1965.
Material: Except as otherwise noted on the Standard Details, all material shall conform to A.S.T.M. designation A36.

NOTE:
 All pedestals shall be installed perpendicular to \bar{C} of stringer.
 L indicates 90° angle between stringer and diaphragm.



NOTE
 To compensate for dead load deflections, as well as possible irregularities in beams, set the bottom of slab elevations at the points indicated before any of the slab formwork is started. See Sub-Section 502.10 (a) of the Standard Specifications, Revision of June, 1968.

PEDESTALS
 EPC-2 10 Req'd
 EPC-4 5 Req'd
 EPC-5 5 Req'd
 FPC-3 5 Req'd

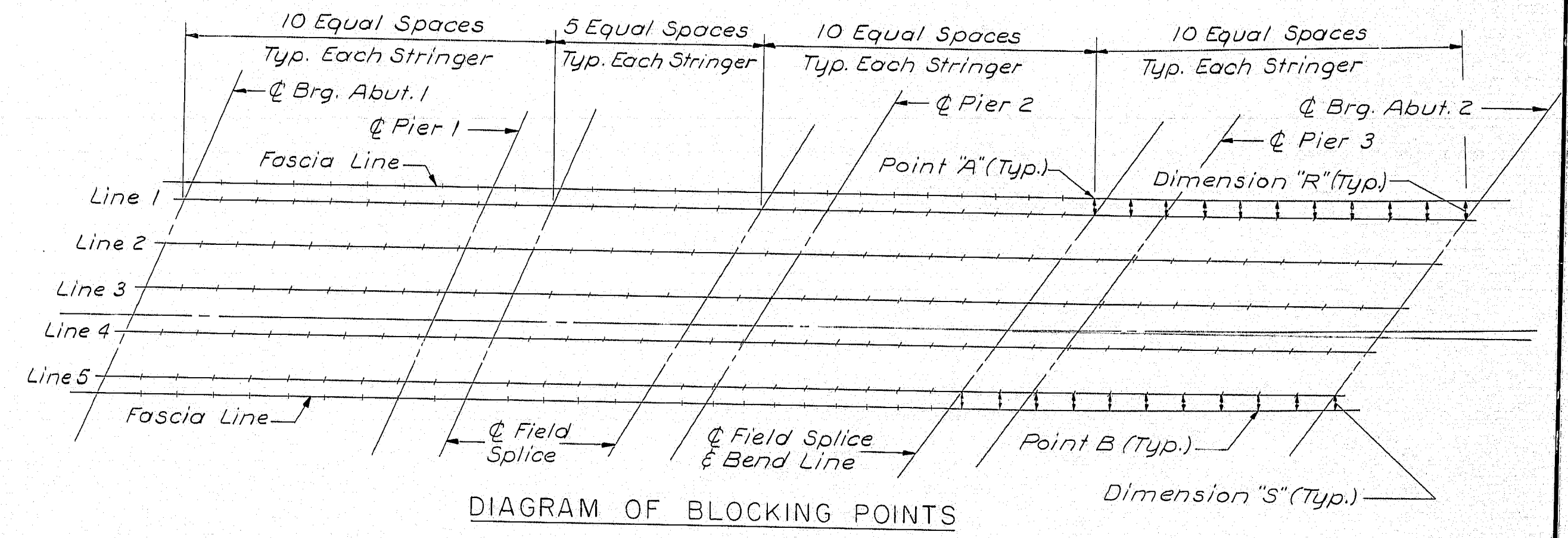
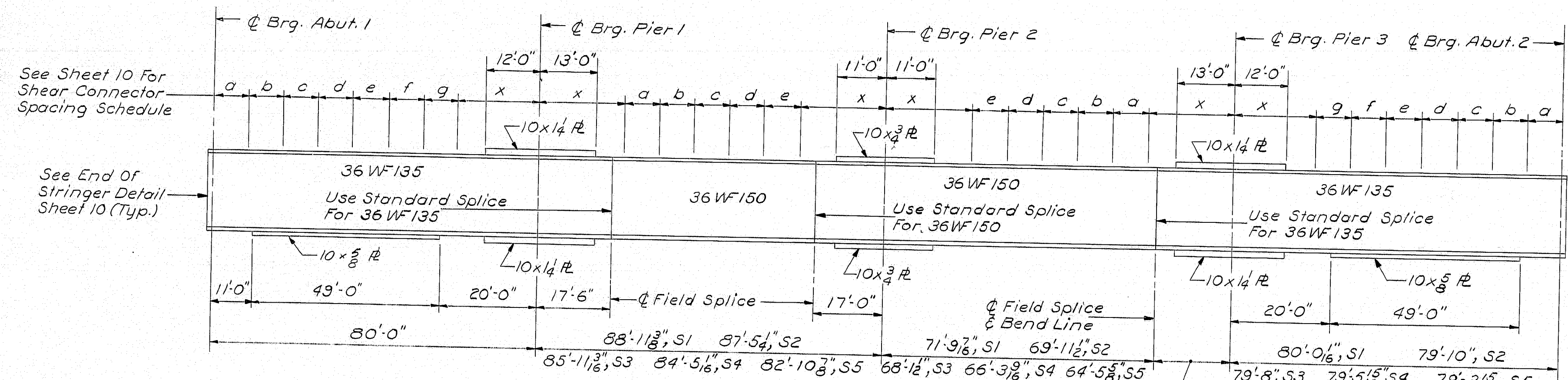


TABLE FOR DIMENSIONS "R" & "S"

Span	SPAN 4									Brg. Abut. 2
	Splice & Bend Line	0.1L	0.2L	0.3L	0.4L	0.5L	0.6L	0.7L	0.8L	
"R"	2'-4 3/8"	2'-0 3/8"	1'-10"	1'-8 1/2"	1'-7 1/8"	1'-5 3/8"	1'-11 1/4"	2'-2 1/2"	2'-6"	
"S"	2'-3 3/8"	2'-7 1/4"	2'-10 1/4"	3'-0 1/2"	3'-2"	3'-2 1/8"	3'-1 1/8"	2'-11 1/8"	2'-9 3/8"	2'-6"

BOTTOM OF SLAB ELEVATION AT BLOCKING POINTS

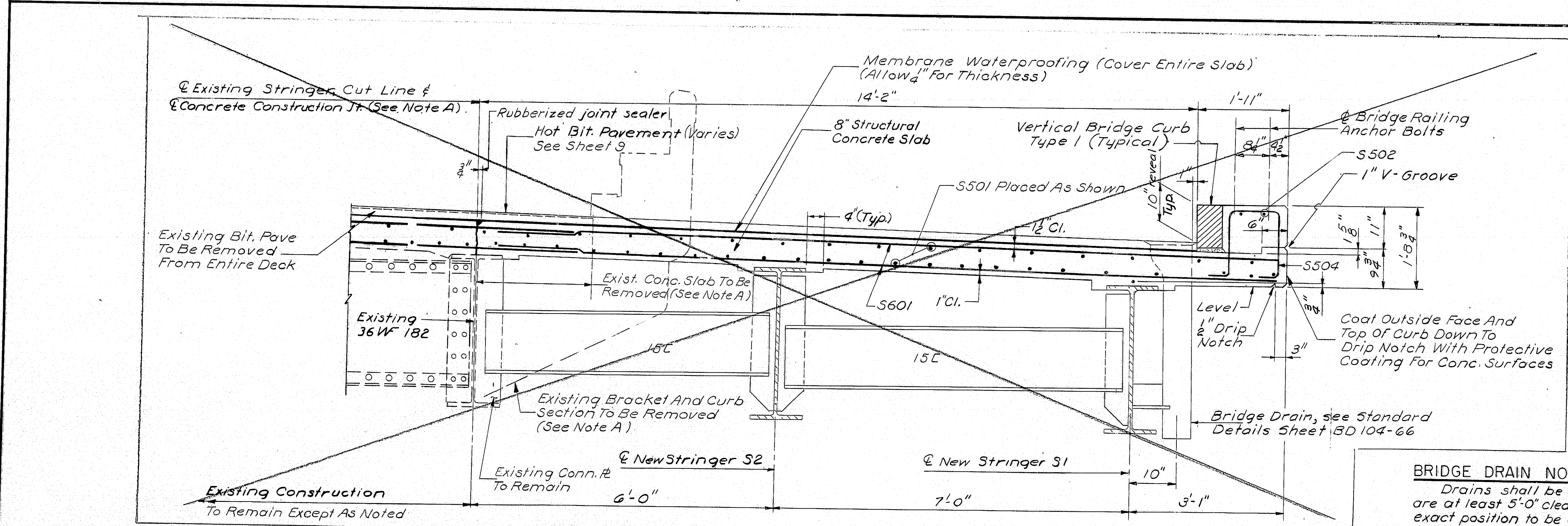
Point	Brg. Abut. 1									Splice	SPAN 4									Splice	Brg. Abut. 2															
	0.1L	0.2L	0.3L	0.4L	0.5L	0.6L	0.7L	0.8L	0.9L		0.1L	0.2L	0.3L	0.4L	0.5L	0.6L	0.7L	0.8L	0.9L		0.1L	0.2L	0.3L	0.4L	0.5L	0.6L	0.7L	0.8L	0.9L							
Point A	47.70	47.78	47.83	47.87	47.88	47.87	47.83	47.79	47.75	47.71	47.68	47.64	47.57	47.47	47.36	47.26	47.16	47.07	46.98	46.89	46.79	46.68	46.56	46.43	46.28	46.12	45.97	45.84	45.72	45.58	45.43	45.25	45.05	44.83	44.58	
Line 1	47.78	47.85	47.91	47.94	47.95	47.94	47.91	47.86	47.83	47.80	47.78	47.76	47.71	47.62	47.55	47.44	47.34	47.24	47.15	47.06	46.97	46.87	46.76	46.64	46.51	46.36	46.19	46.04	45.90	45.77	45.64	45.49	45.31	45.12	44.91	44.67
Line 2	47.91	47.98	48.04	48.08	48.09	48.07	48.04	48.00	47.96	47.94	47.93	47.91	47.87	47.81	47.72	47.62	47.53	47.45	47.37	47.29	47.22	47.13	47.03	46.91	46.79	46.65	46.49	46.34	46.21	46.08	45.95	45.81	45.64	45.45	45.24	45.01
Line 3	48.04	48.11	48.17	48.21	48.22	48.21	48.18	48.14	48.10	48.08	48.07	48.05	48.02	47.97	47.89	47.81	47.72	47.65	47.58	47.52	47.45	47.37	47.29	47.18	47.07	46.94	46.78	46.64	46.51	46.39	46.27	46.12	45.96	45.77	45.57	45.35
Line 4	48.17	48.24	48.30	48.34	48.35	48.34	48.31	48.27	48.24	48.22	48.21	48.20	48.17	48.13	48.06	47.98	47.91	47.85	47.79	47.74	47.68	47.61	47.54	47.44	47.34	47.22	47.07	46.93	46.81	46.70	46.58	46.44	46.28	46.10	45.90	45.68
Line 5	48.30	48.38	48.43	48.47	48.49	48.48	48.45	48.41	48.38	48.36	48.35	48.34	48.32	48.29	48.23	48.15	48.09	48.04	47.99	47.95	47.90	47.85	47.78	47.70	47.60	47.49	47.36	47.23	47.11	47.00	46.89	46.75	46.60	46.42	46.22	46.01
Point B	48.33	48.41	48.47	48.51	48.52	48.51	48.48	48.44	48.41	48.39	48.38	48.37	48.35	48.31	48.26	48.19	48.12	48.07	48.02	47.98	47.94	47.89	47.82	47.73	47.64	47.53	47.40	47.28	47.18	47.07	46.96	46.82	46.67	46.48	46.28	46.06

HOWARD, NEEDLES, TAMMEN & BERGENDOFF
CONSULTING ENGINEERS
NEW YORK BOSTON KANSAS CITY

DESIGN - I.S. DETAIL - R.D.F. BRIDGE NO. SURVEY PLOT -
 CHECK - R.E.F.
STATE HIGHWAY COMMISSION
BRIDGE DIVISION
 RAMP "J"
 OVER
 ROUTE 1 S.B. & RAMP "M"
 IN THE TOWN OF
 KITTERY
 YORK COUNTY
 STRUCTURAL STEEL & BLOCKING
 SHEET 9 OF 15 AUGUSTA, MAINE

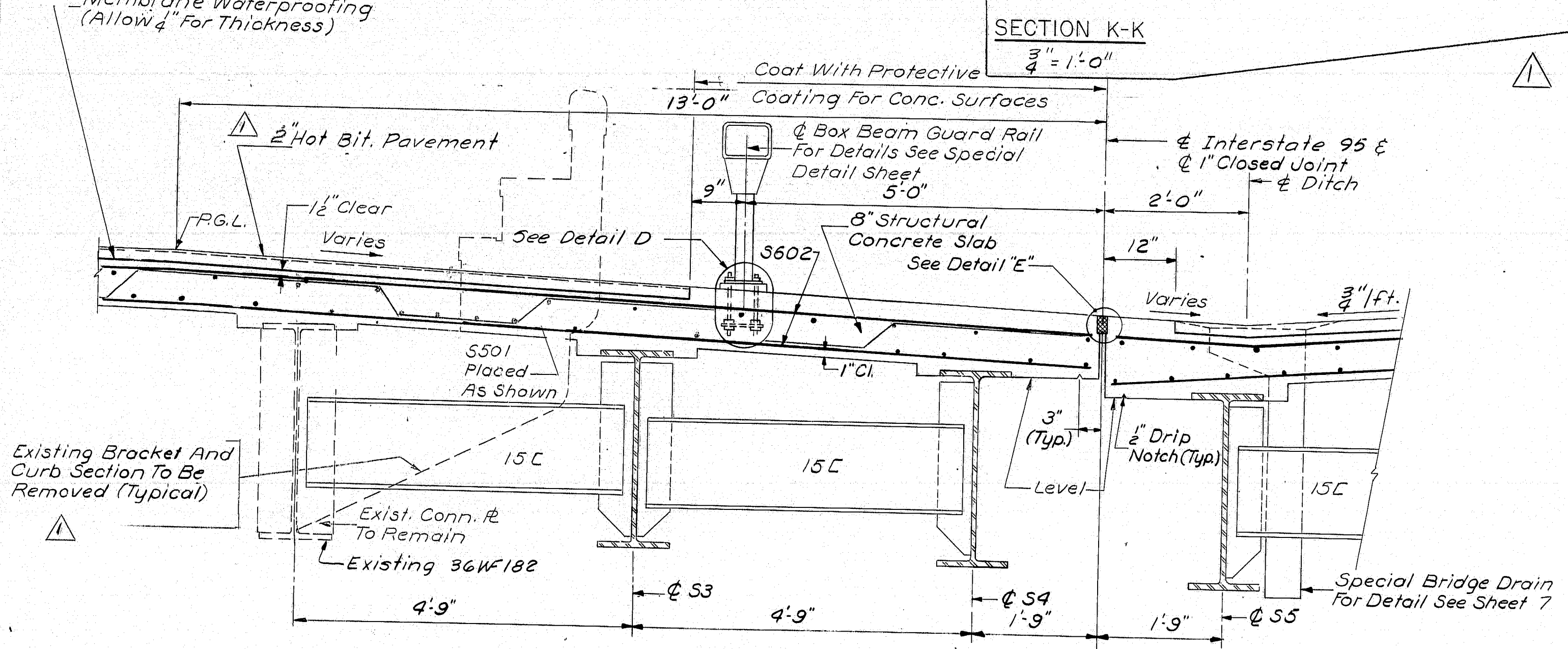
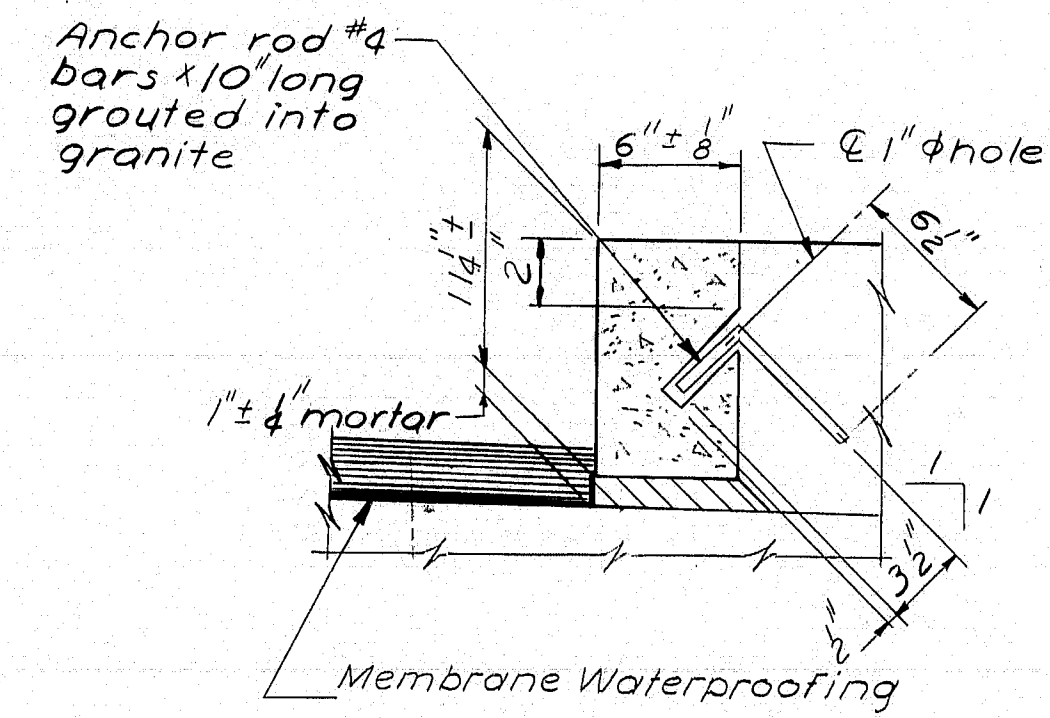
Excerpts from Spruce Creek Overpass As-Builts

F.P.D. No.	STATE	PROJECT NUMBER	SHEET NO.	TOTAL SHEETS
1	MAINE	I-95-1(5)	73	1133

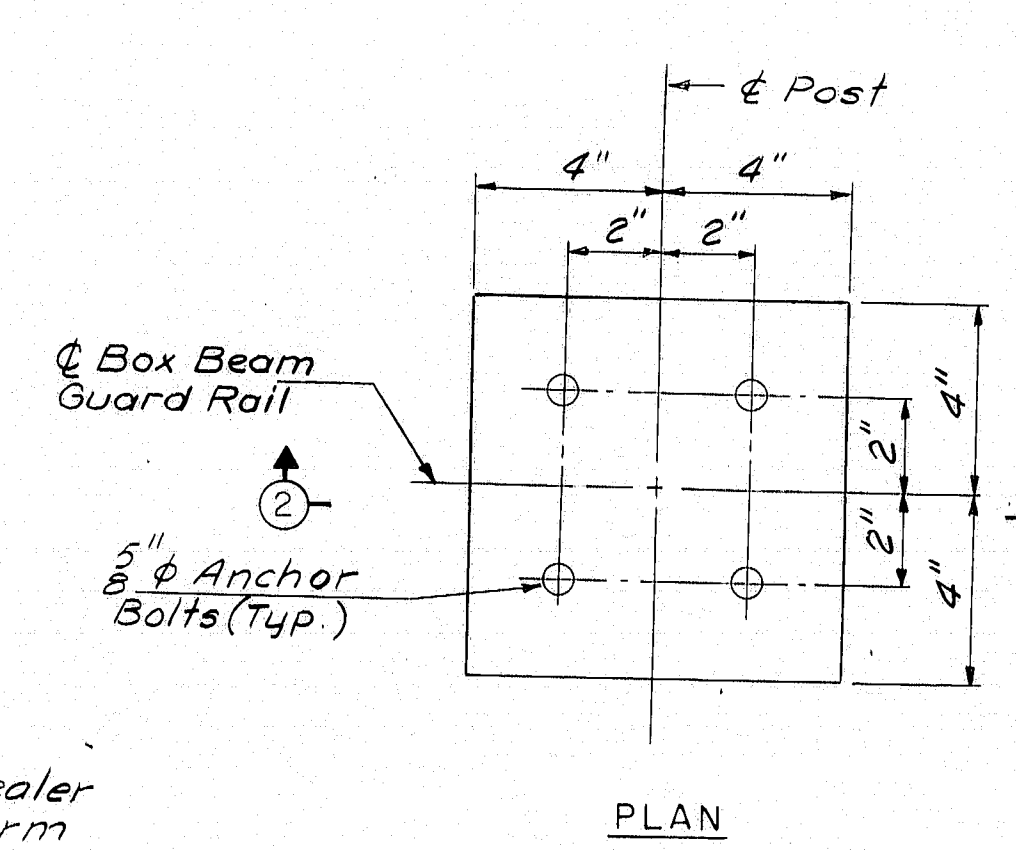
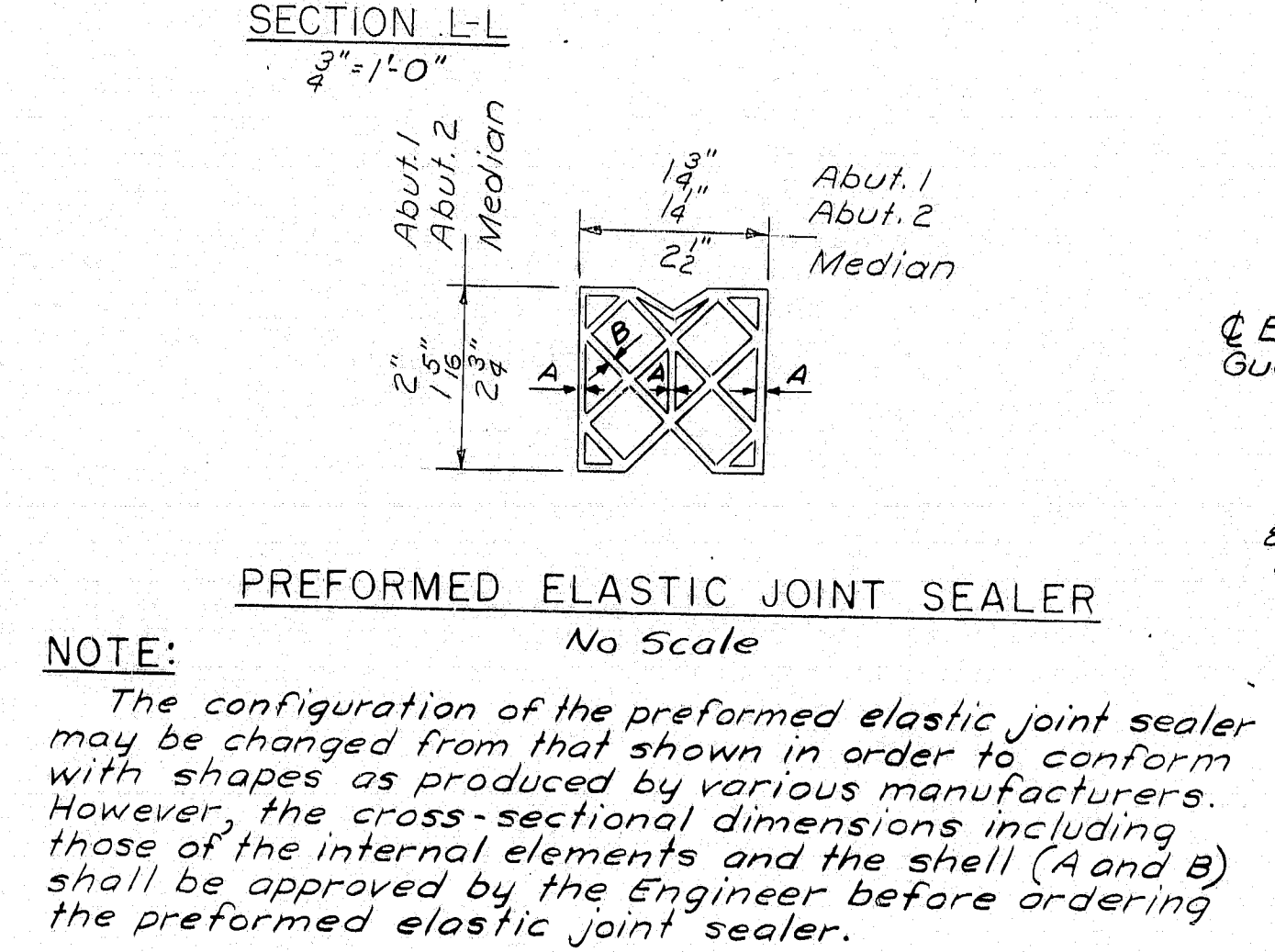
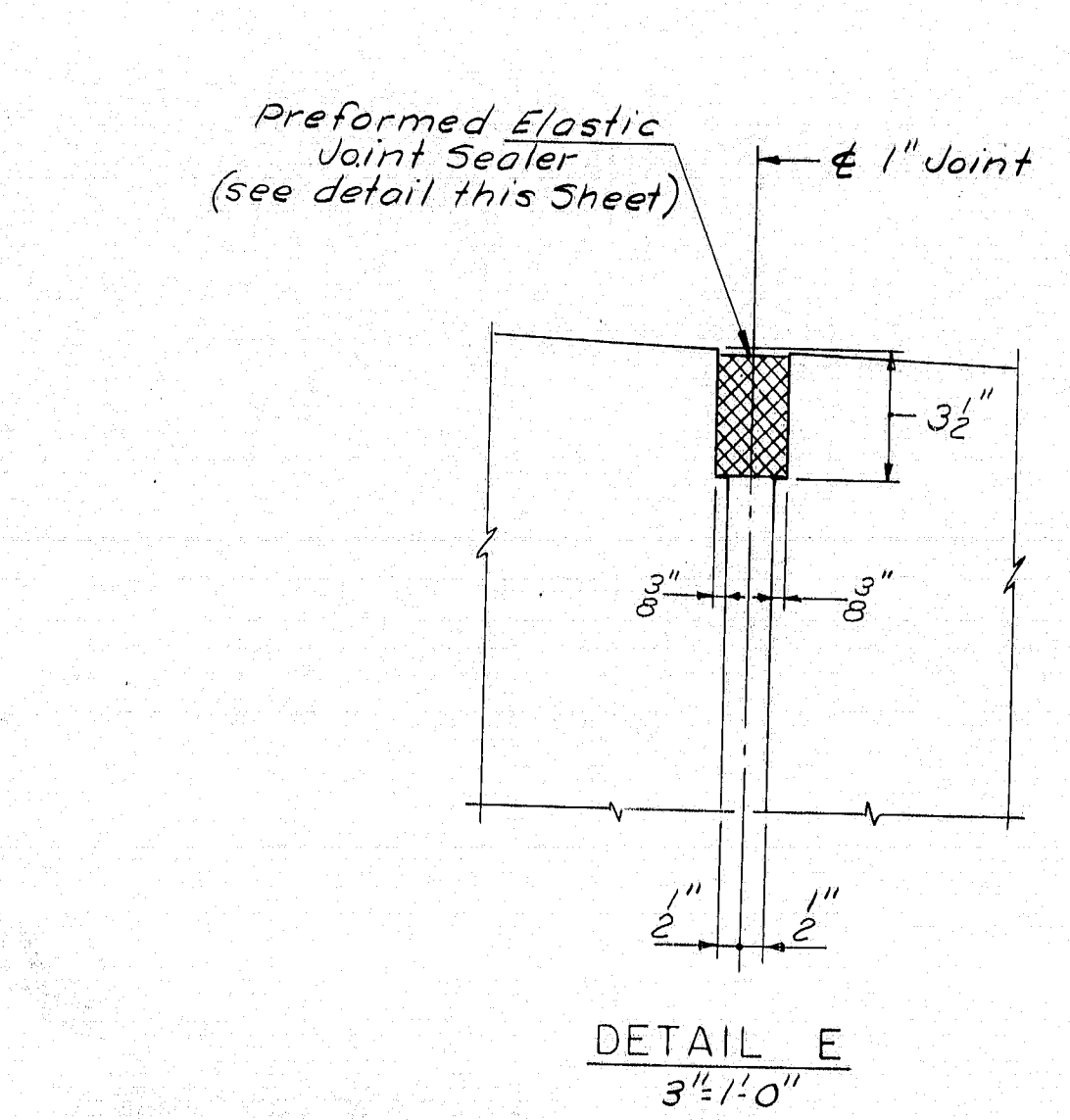


NOTE A
 Concrete slab shall be carefully marked along required line and then accurately cut with a masonry saw to a depth that will clear existing reinforcing steel. Care shall be taken to avoid notching or otherwise damaging existing transverse reinforcing bars during removal of concrete.
 All surfaces of existing concrete slab in contact with new concrete shall be coated with an approved epoxy adhesive. Preparation of surface and application of adhesive shall be in accordance with the manufacturer's instructions. Payment for surface preparation, furnishing and applying adhesive shall be incidental to Item 202.103.
 Removal of existing concrete slab, steel brackets, curb section and existing bituminous paving shall be paid for under Item 202.103. See Special Provisions.
 All existing reinforcing steel to be incorporated in new work and portions of top flange of existing beams in contact with new work shall be cleaned. Payment for cleaning shall be incidental to Item 202.103.

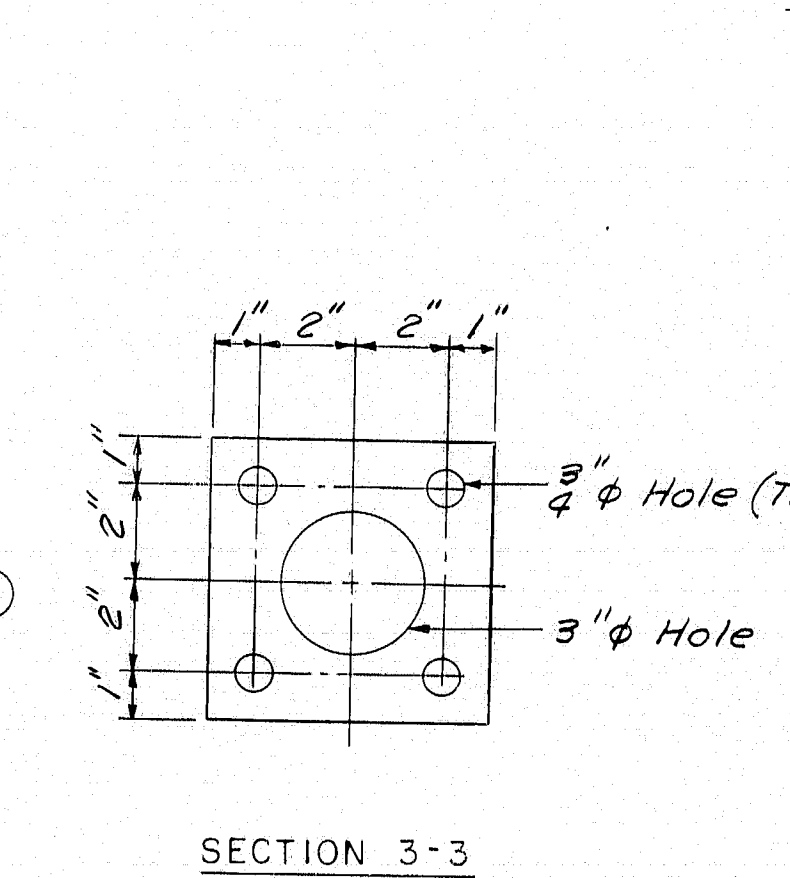
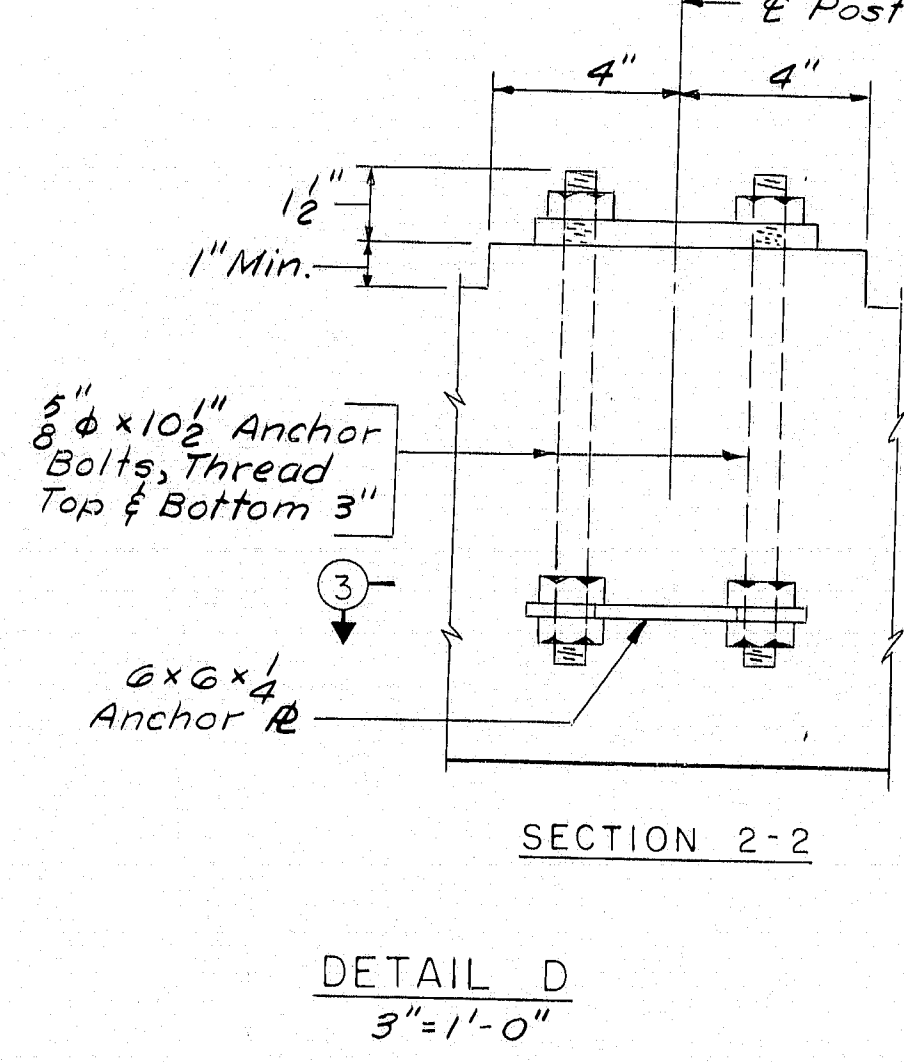
BRIDGE DRAIN NOTES
 Drains shall be placed so they are at least 5'-0" clear of abutments; exact position to be determined in the field. For approximate locations, see sheet 1.



TYPICAL CURB SECTION
1 1/2" x 1'-0"



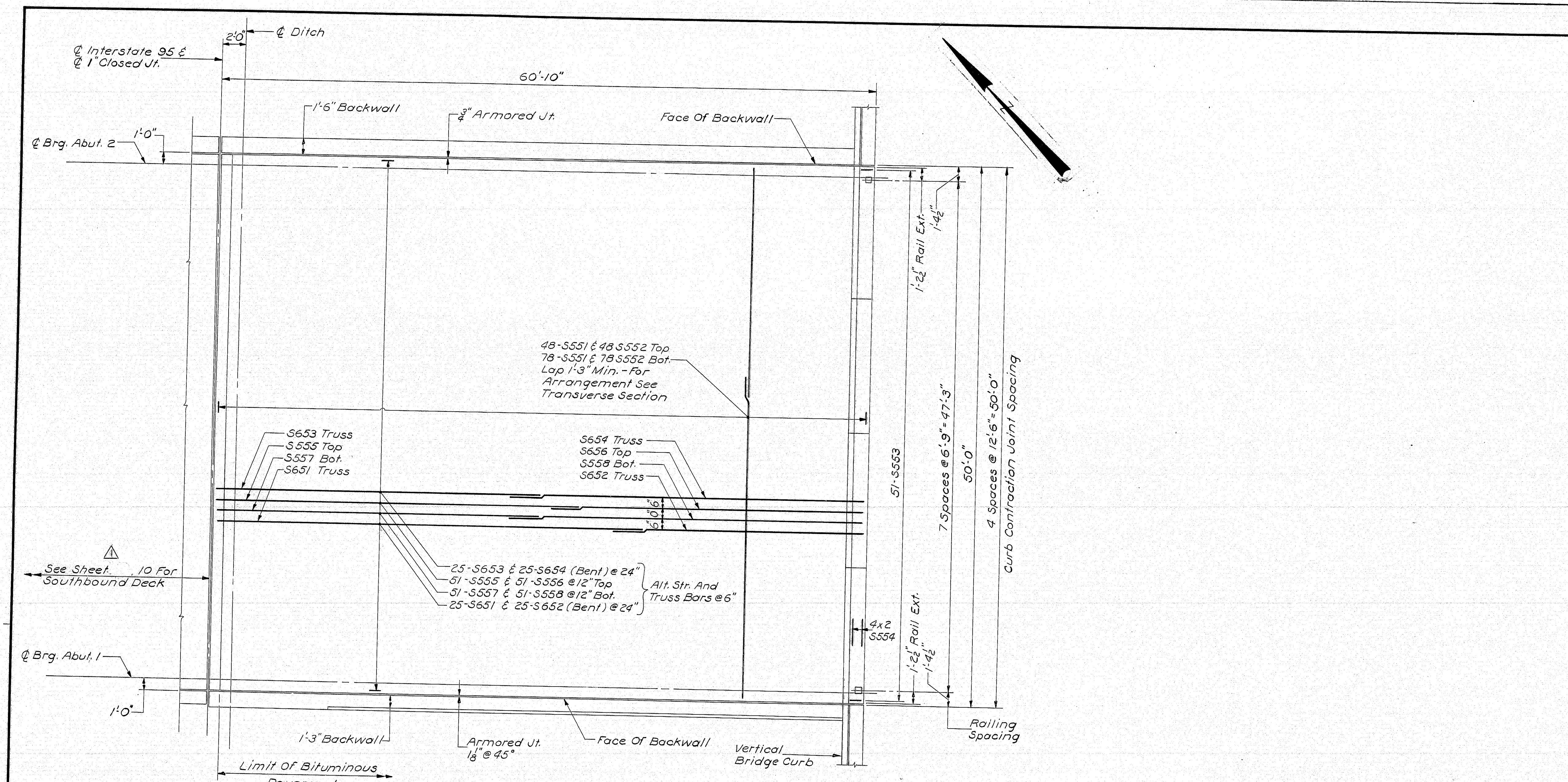
ANCHOR BOLT NOTE:
 Four anchor bolts required at each guard rail post. Bolts to be furnished with nuts and anchor plate. All parts to be galvanized. Payment for acquiring and installing anchor bolts shall be incidental to Item 502.263 Structural Concrete, Roadway & Sidewalk Slabs on Steel Bridges.



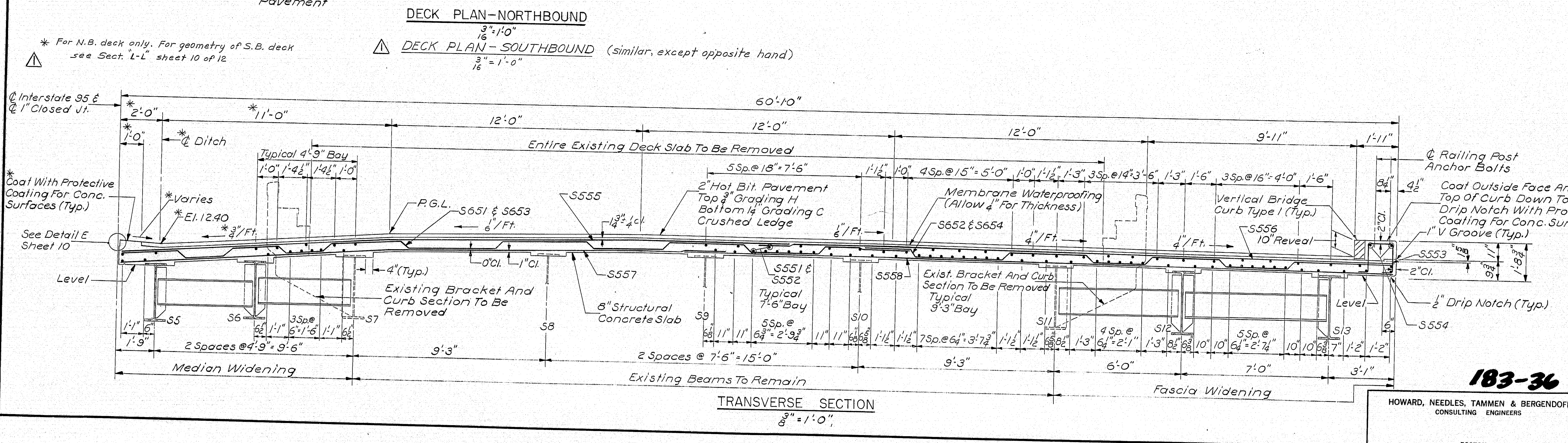
REV. A	Revised to show new southbound deck slab	DESIGN	Checked
TRACE	S.M. DETAIL - J.M.M.	BRIDGE NO.	183-35
CHECK	R.E.F.	SURVEY	Plot
STATE HIGHWAY COMMISSION BRIDGE DIVISION INTERSTATE 95 OVER SPRUCE CREEK IN THE TOWN OF KITTERY YORK COUNTY SOUTHBOUND SUPERSTRUCTURE DETAIL SHEET 10 OF 12 AUGUSTA, MAINE			

KITTERY (5)

B. P. N. REG. NO.	STATE	PROJECT NUMBER	SHEET NO.	TOTAL SHEETS
1	MAINE	I-95-1(5)	74	100



NOTES:
 ▲ For General Superstructure notes see Sheet 9.

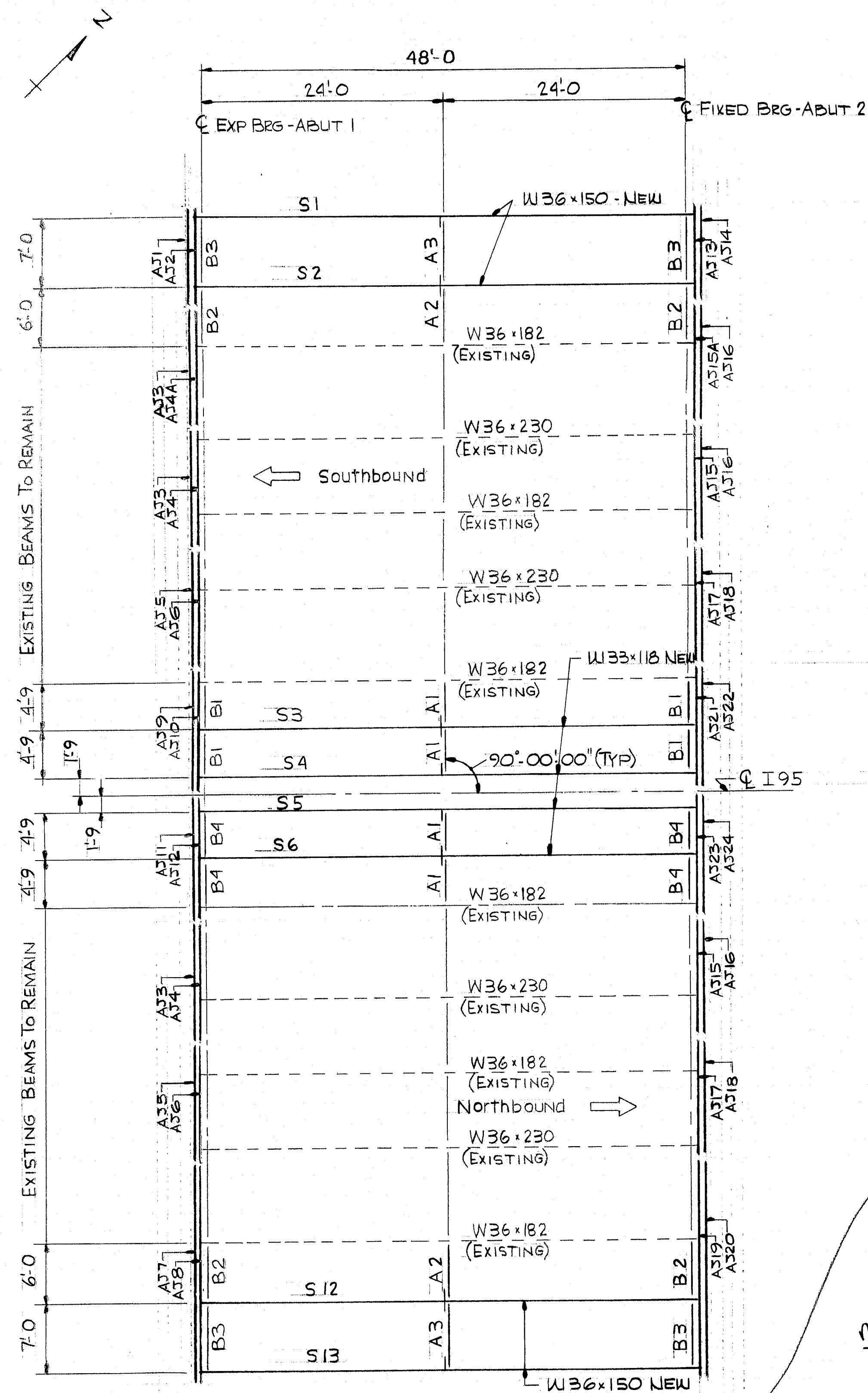


REV.	DESCRIPTION	DESIGN	CHECK
1	Revised to show new southbound deck slab	J.M.M.	S.M.

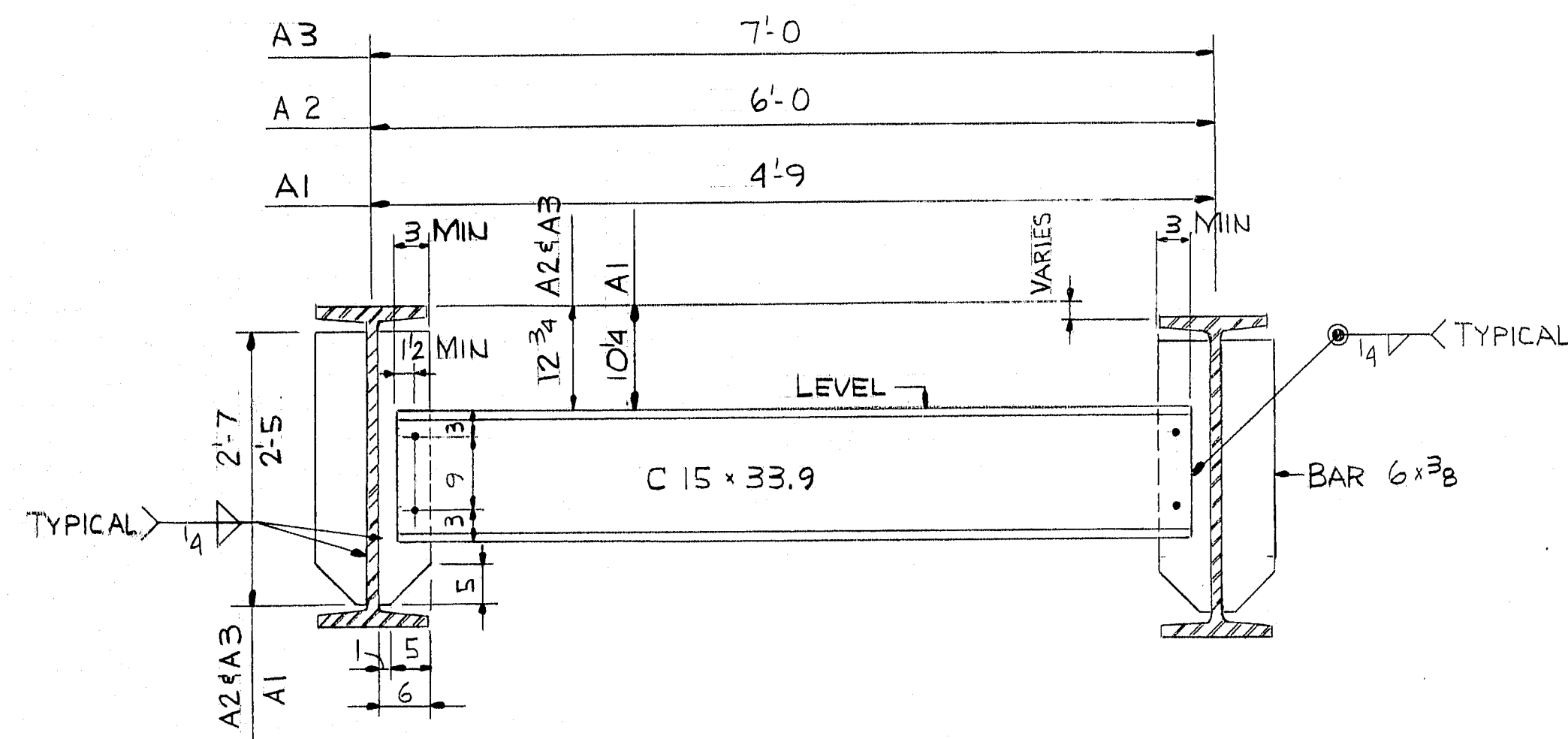
STATE HIGHWAY COMMISSION
 BRIDGE DIVISION
 INTERSTATE 95
 OVER
 SPRUCE CREEK
 IN THE TOWN OF
 KITTERY
 YORK COUNTY
 NORTHBOUND SUPERSTRUCTURE
 SHEET 11 OF 12 AUGUSTA, MAINE

183-36
 HOWARD, NEEDLES, TAMMEN & BERGENDOFF
 CONSULTING ENGINEERS
 BOSTON

(KITTERY 5)

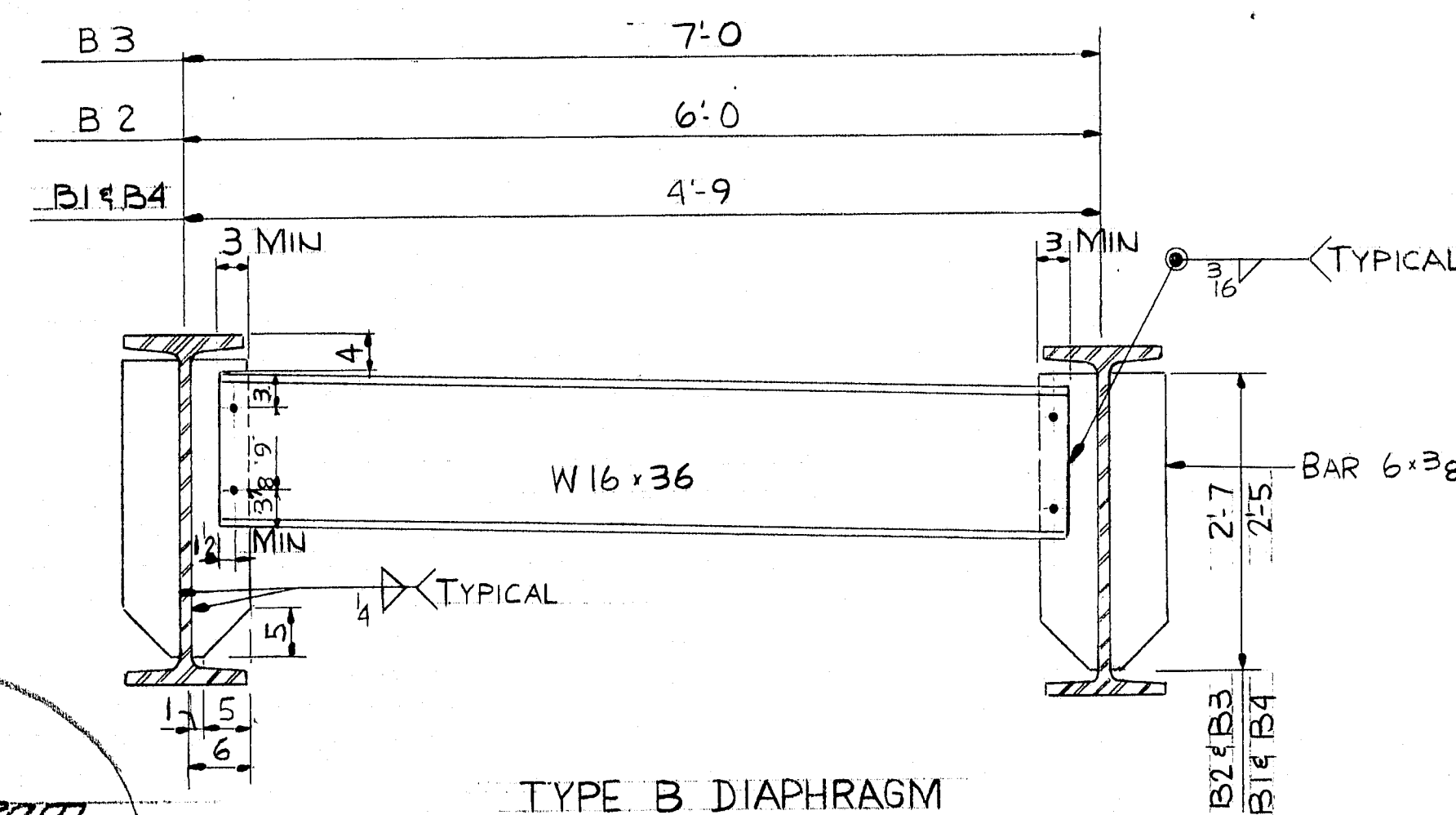


ERECTION DIAGRAM



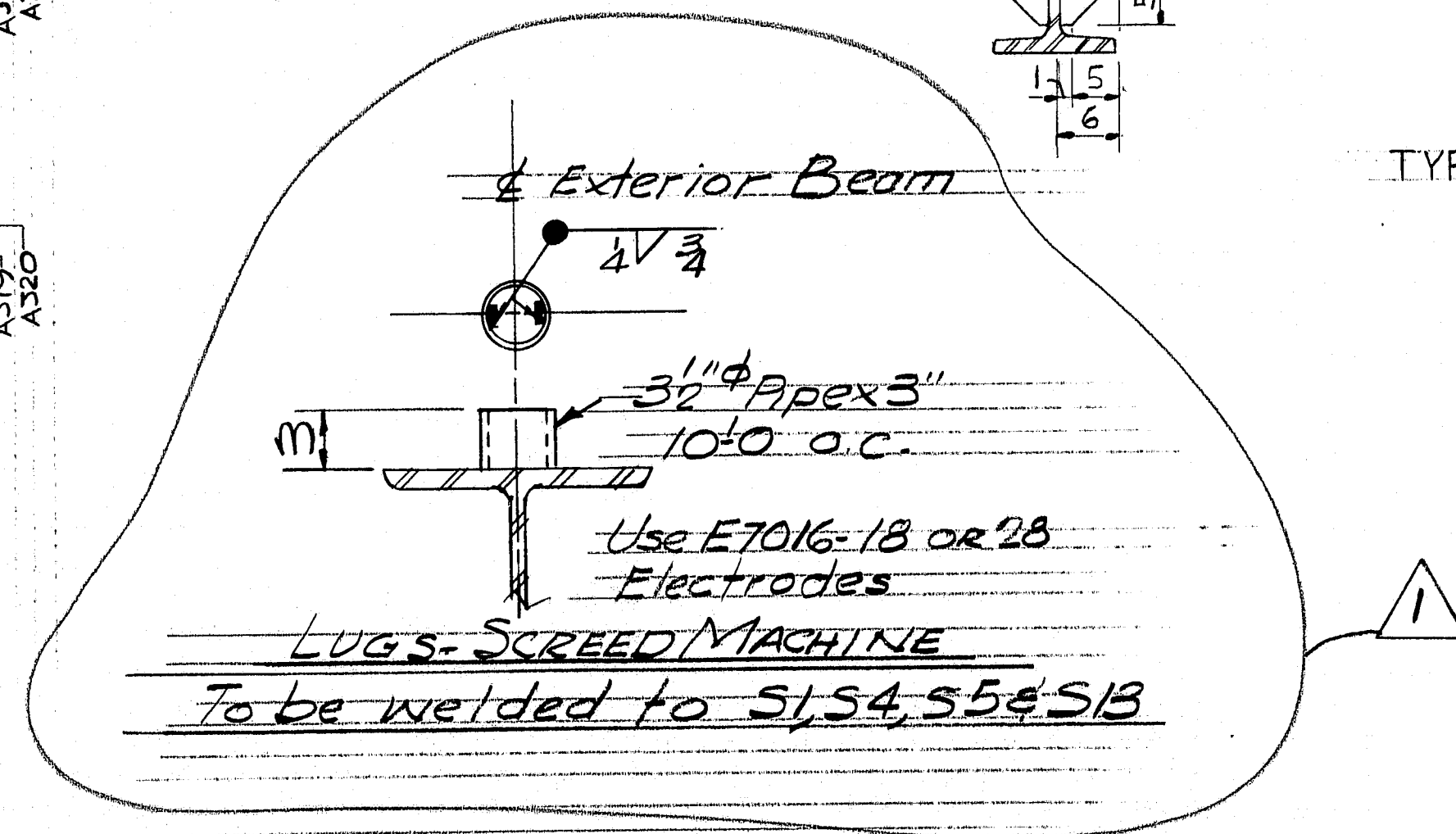
TYPE A DIAPHRAGM

3/16" HOLES FOR 5/8" Ø ERECTION BOLTS



TYPE B DIAPHRAGM

NOTE:
FORM BRACKET HOLES ARE TO BE PLUGGED WITH 5/8" x 1 1/2" CARRIAGE BOLTS, HEADS TO BE ON OUTSIDE. HOLES TO BE COMPLETELY COVERED. TACK WELD NUTS TO GIRDER WEB.



APPROVED AS NOTED 3-10-71
FED. PROJECT No. I95-1(5)

ERECTION DIAGRAM - TYPE A & B DIAPHRAGM

PRINT DIST.		Bancroft & Martin Inc.	
F.A.	2-3-71	2	South Portland, Maine 04106.
SHOP	3-12-71	4	
STATE	3-12-71	8	
CUST	3-12-71	2	
		JOB: I95 OVER SPRUCE CREEK KITTERY, MAINE	
		CUSTOMER: THOMAS DICENZO	
		DESIGNER: MSHC BRIDGE DIV.	
REV.	9-4-71	JPF	ORDER NO.
CHECKED	2-3-71	PAM	JOB NO.
DRAWN	10-23-70	DWL	DRAWING NO.
		70-440	
		A-1	

117-158

