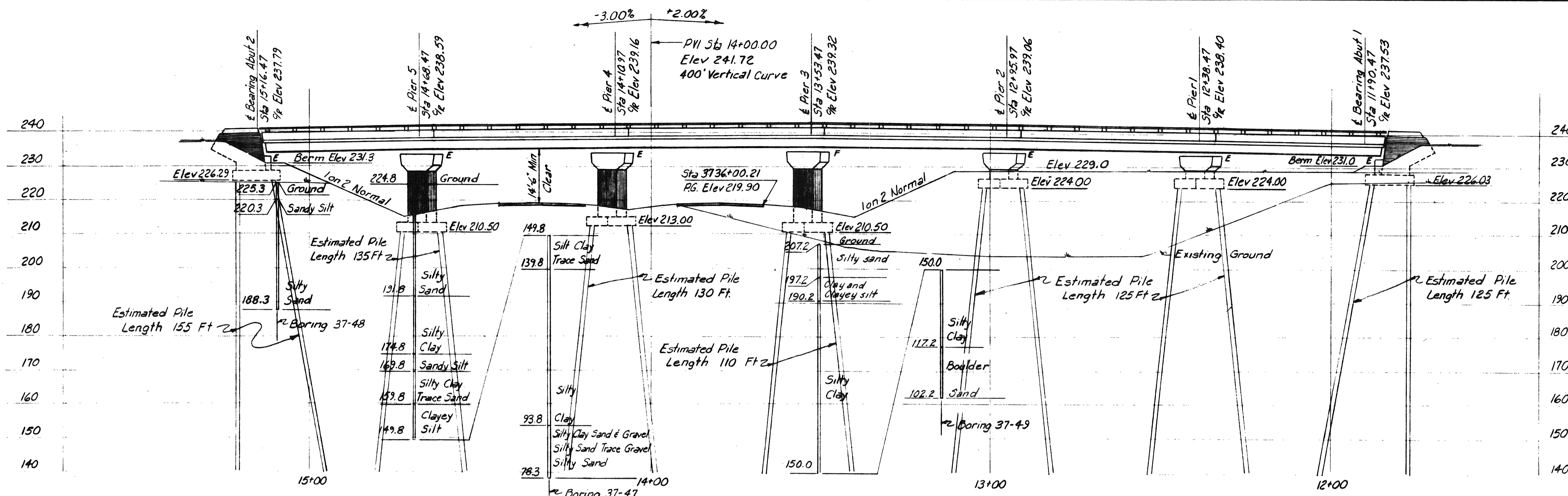


Route 122 Underpass

1956 As-Built Plans

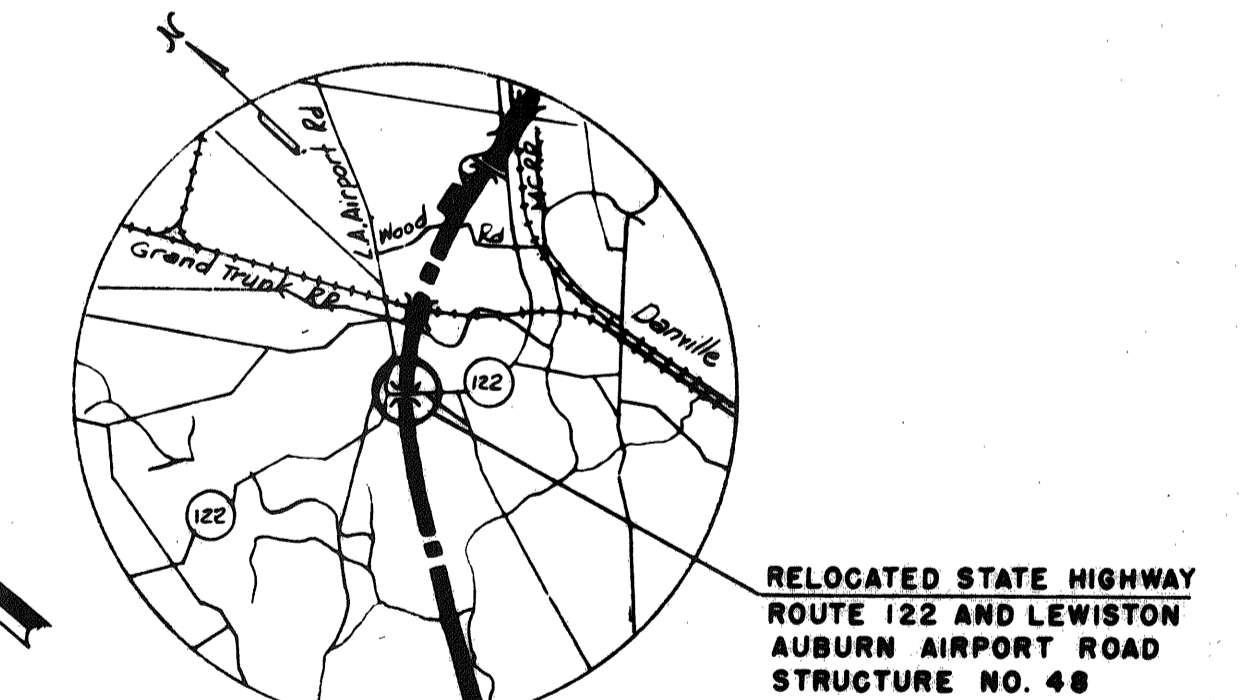
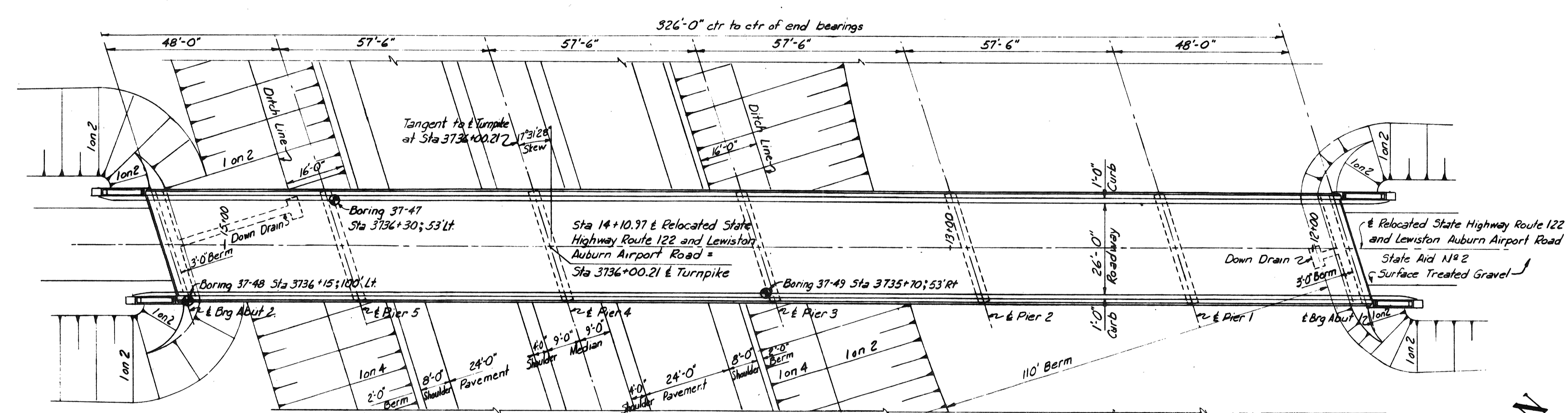


**GENERAL NOTES**

Design Specifications: A.A.S.H.O (1953) with minor modifications  
 Design Live Load: H20  
 Max Pile Load:  
 Abutments = 29 tons/pile  
 Piers 1 and 2 = 43.3 tons/pile  
 Piers 3, 4 and 5 = 58 tons/pile

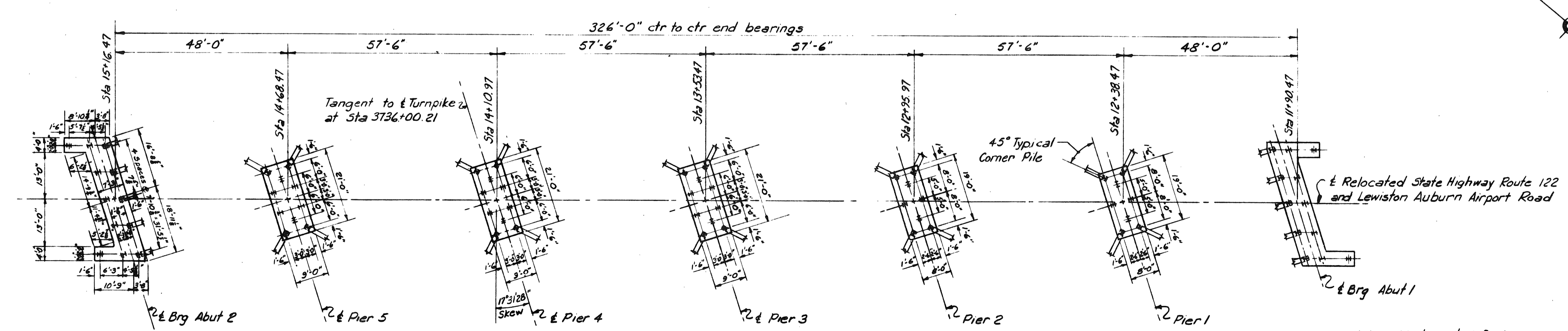
**REFERENCES**

Dwg No	Title	Superstructure			
		Sub-structure Contractor	Steel Fabricator	Steel Erector	Floor Contractor
SD-1A	Standard Abutment Details	✓	✓	✓	✓
SD-2	Standard Pier Details	✓	✓	✓	✓
SD-3	Abutment Drainage Details	✓	✓	✓	✓
SD-4	Standard Pile Details	✓	✓	✓	✓
SD-5	Standard Handrail, Bearing Devices and Miscellaneous Details	✓	✓	✓	✓
SD-6	Standard Diaphragm Details	✓	✓	✓	✓
SD-8	Standard Type A Splices for 30W Beams	✓	✓	✓	✓
SD-18A	Type "Z" Expansion Joint	✓	✓	✓	✓
SD-22	Standard Bridge Floor Cross-Section 26'-0" and 30'-0" Roadways	✓	✓	✓	✓



**Turnpike Curve Data**

PI Sta 3751+48.51  
 Δ = 37° 20' 20" Rt  
 D = 1° 00'  
 R = 5729.58  
 L = 3733.89  
 T = 1935.95  
 E = 318.23



Note: Piles in Piers shall be 12 BP 53. Batter corner piles in direction shown 3" per ft.  
 Note: Abutment 1 footing same as Abutment 2 footing by rotation. Piles in Abutments shall be 10 BP 42. Batter front row of piles 3" per ft.

**DRAWING 48.01.04**

MADE	BY	DATE	REVISION	BY	DATE
TRACED	WCM	4-26-54	2 As Built	HBH	1-18-56
CHECKED	F.S.	4-30-54	1 Elev. Boring 37-49	DNL	5-4-54
IN CHARGE OF I.D.S.K.	No.	REVISION	BY	DATE	

MAINE TURNPIKE AUTHORITY

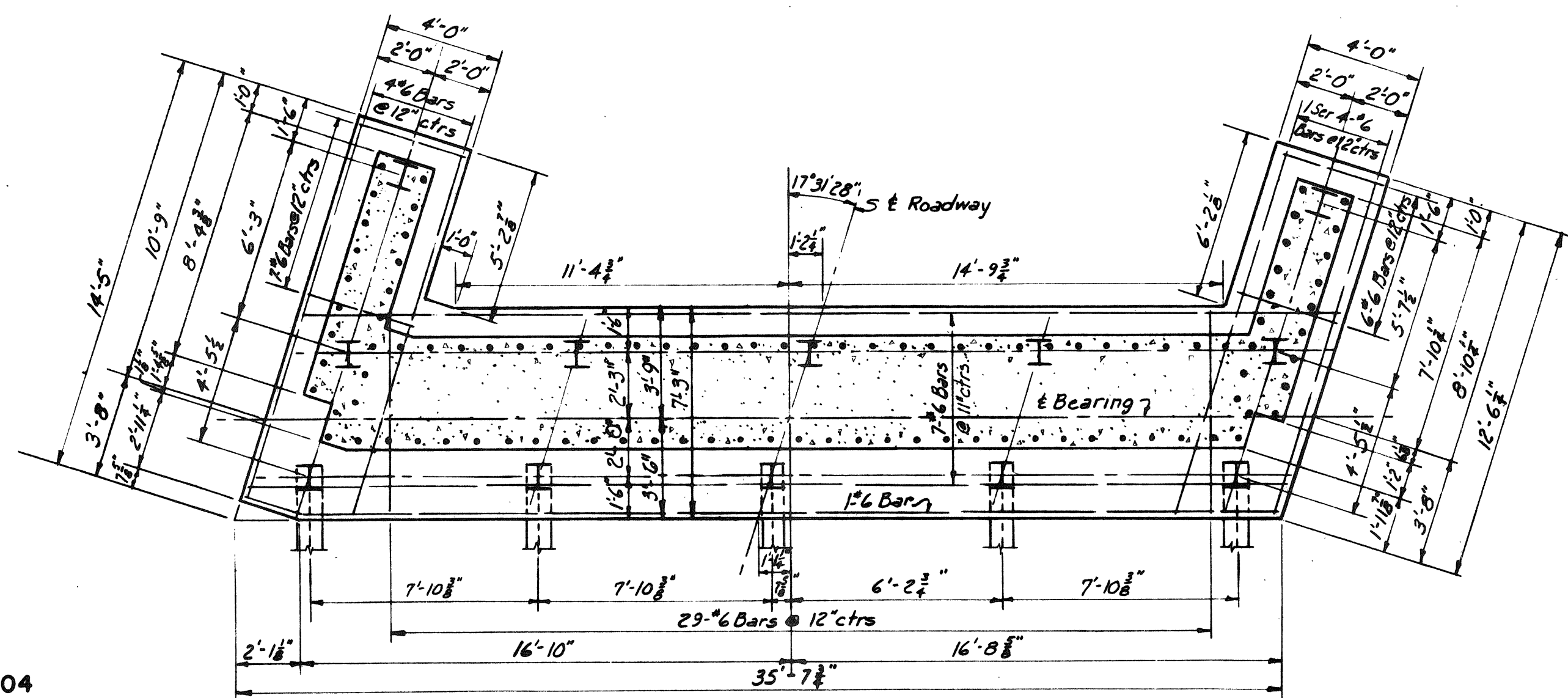
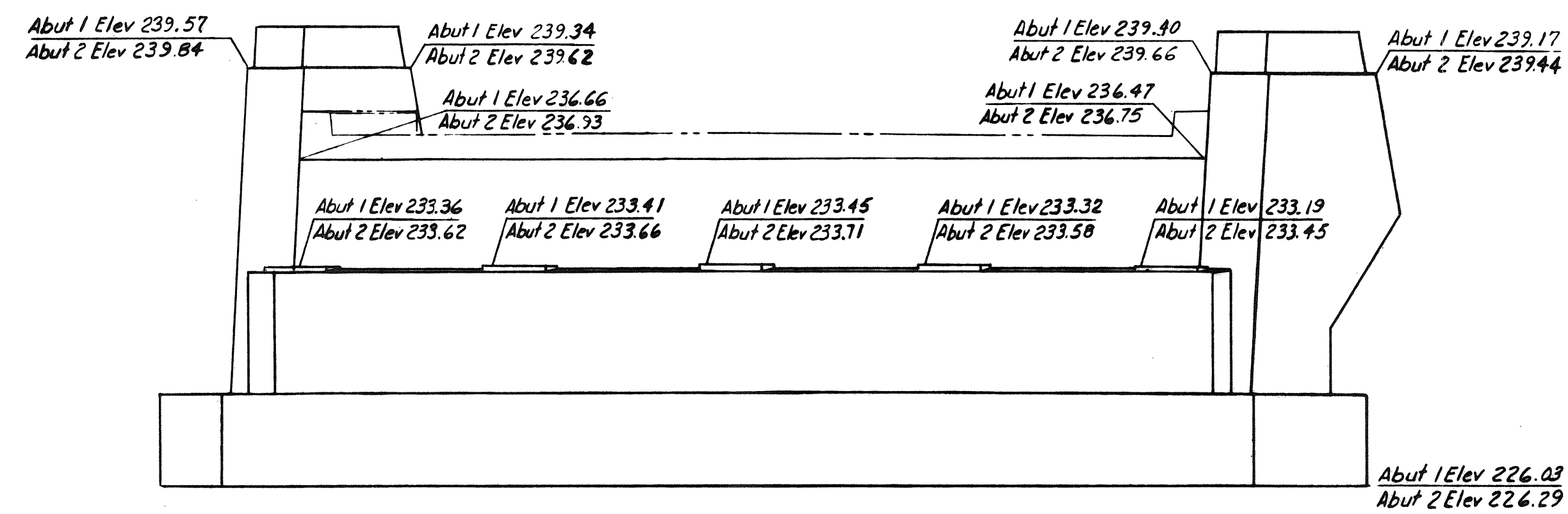
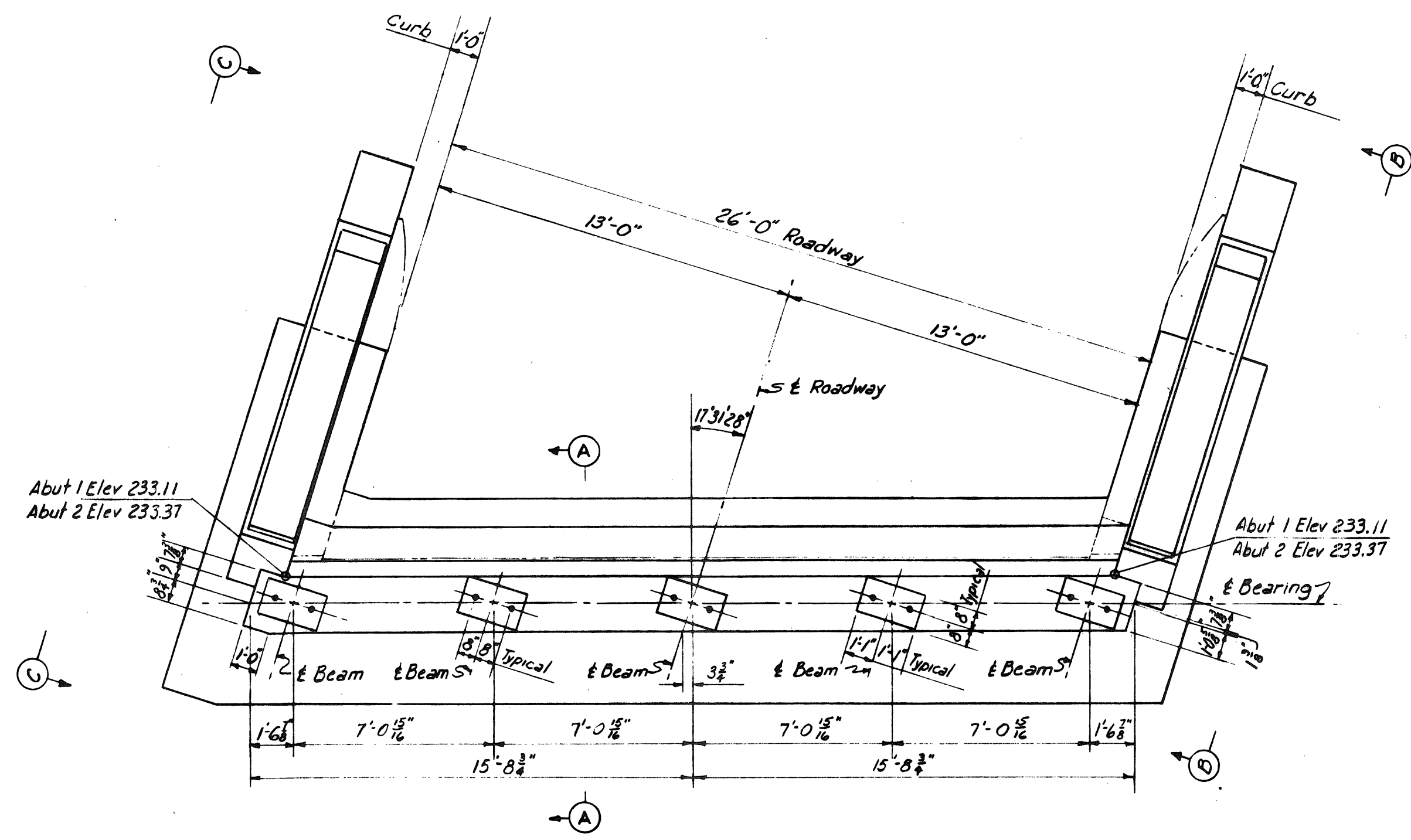
**MAINE TURNPIKE**

**SECTION 2— PORTLAND TO AUGUSTA**

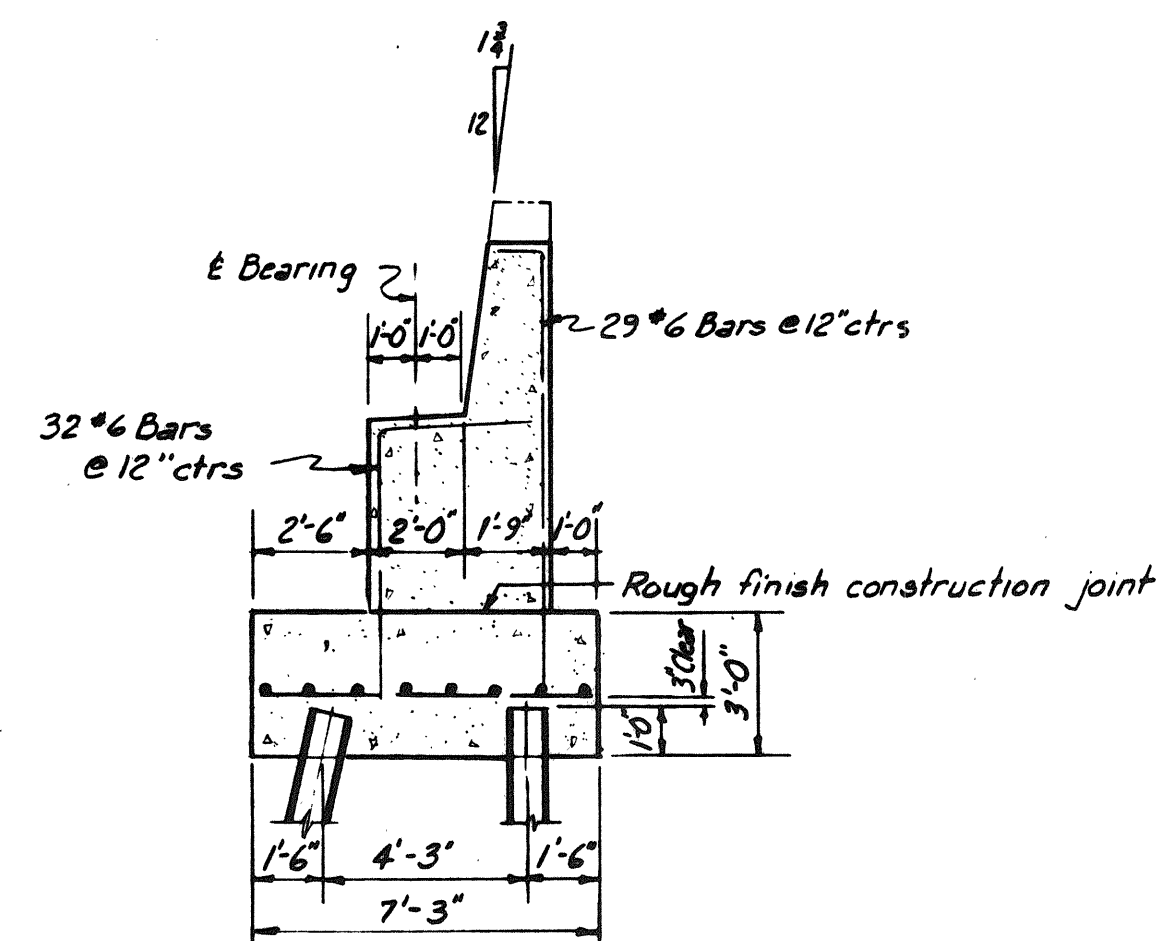
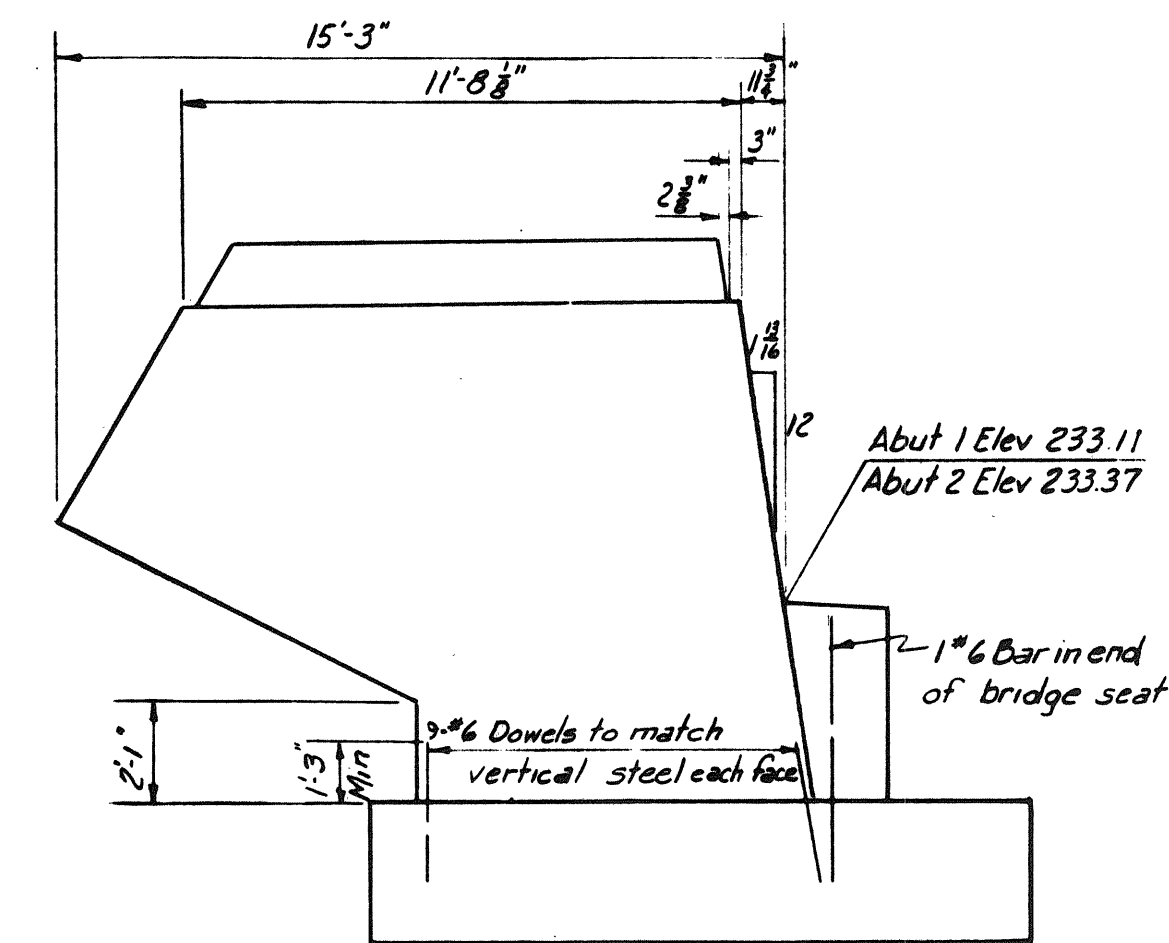
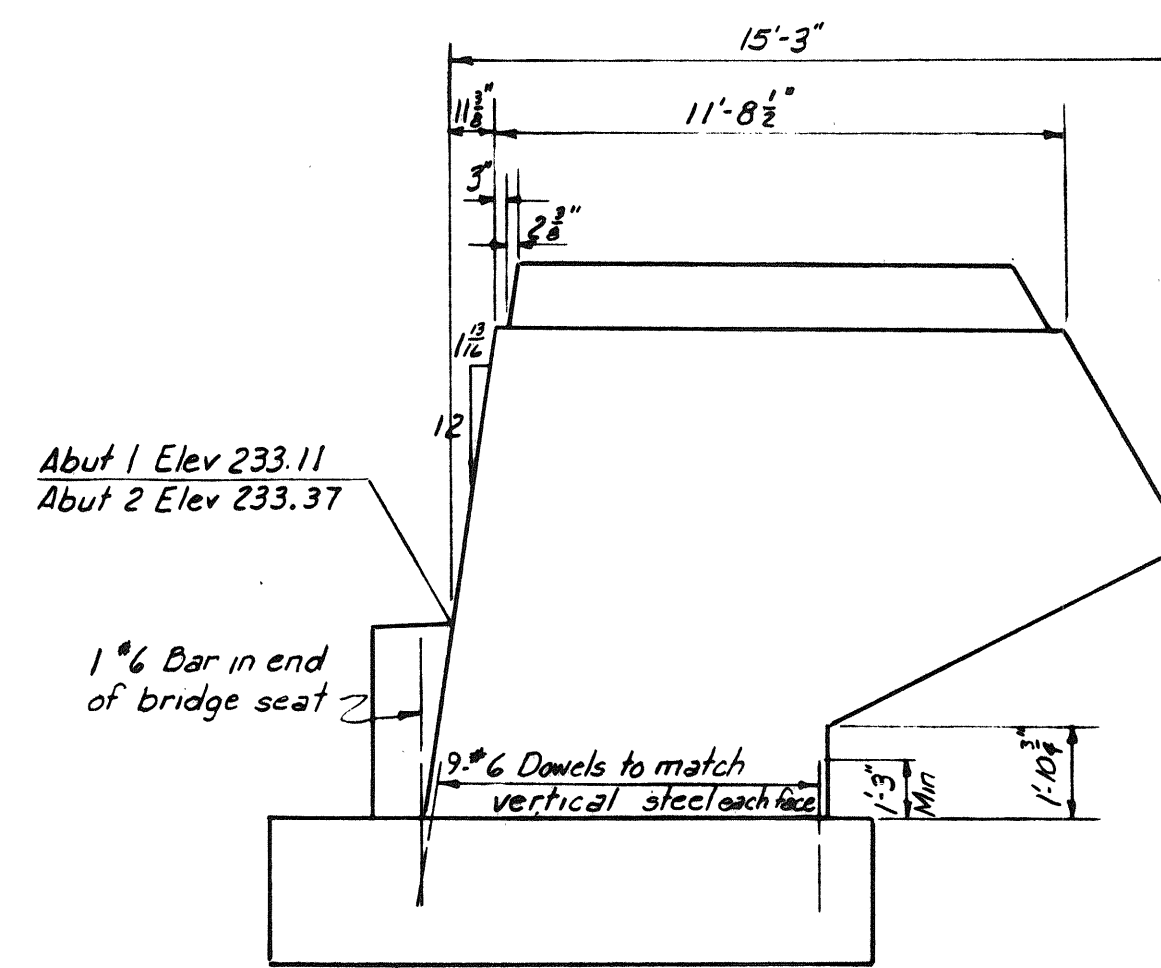
STRUCTURE NO. 48 STA 3736 + 00.21 TURNPIKE UNDER  
**RELOCATED STATE HIGHWAY ROUTE 122 AND LEWISTON AUBURN AIRPORT ROAD**  
**GENERAL PLAN AND ELEVATION**

HOWARD, NEEDLES, TAMMEN & BERGENDOFF  
 CONSULTING ENGINEERS  
 NEW YORK KANSAS CITY

SCALE: 1" = 20'-0"  
 CONTRACT NO. \_\_\_\_\_  
 SHEET NO. 227 OF 322



Notes: All piles in abutments shall be 10 BP 42. Batter front row of piles 3" per ft.

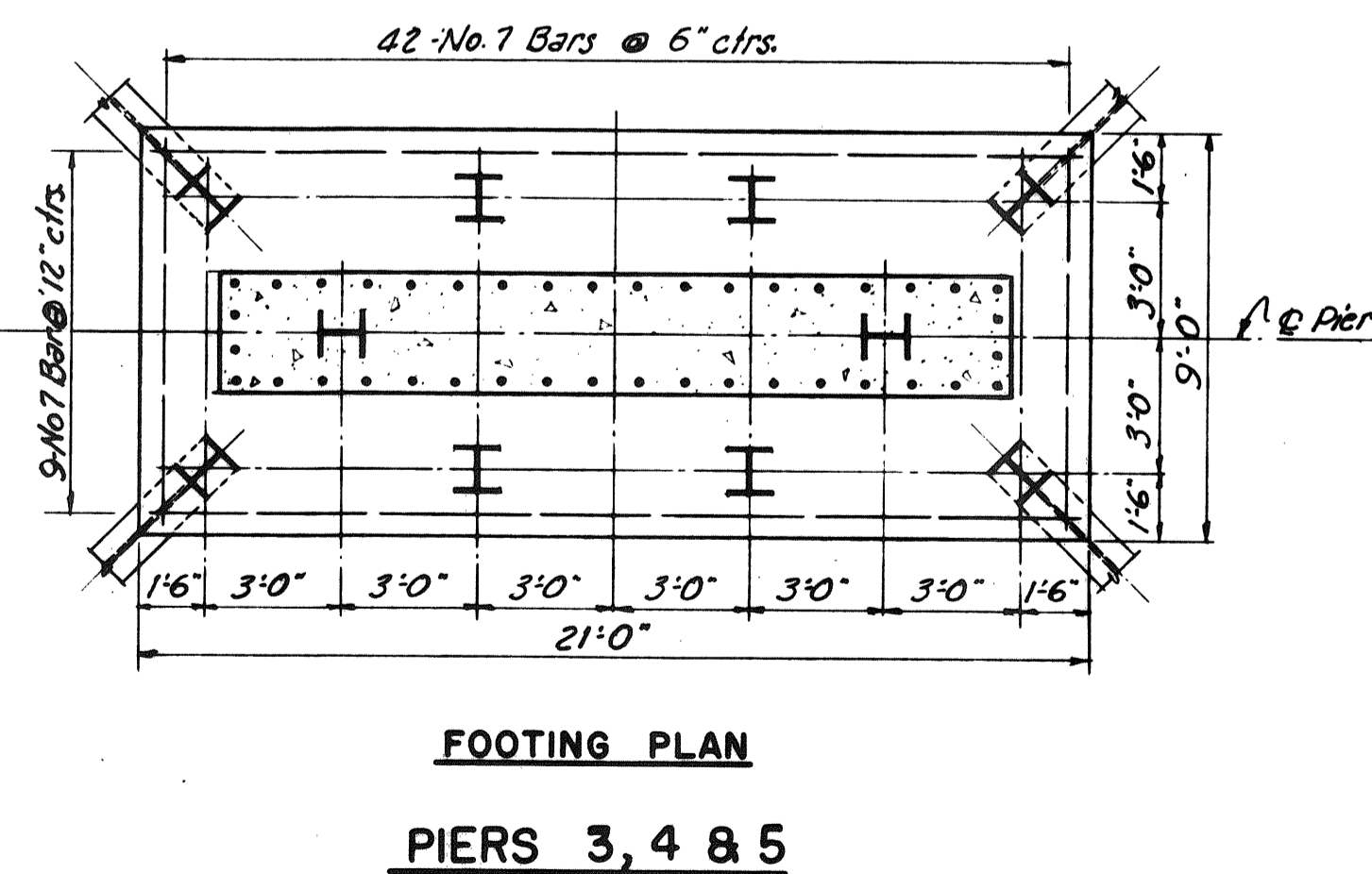
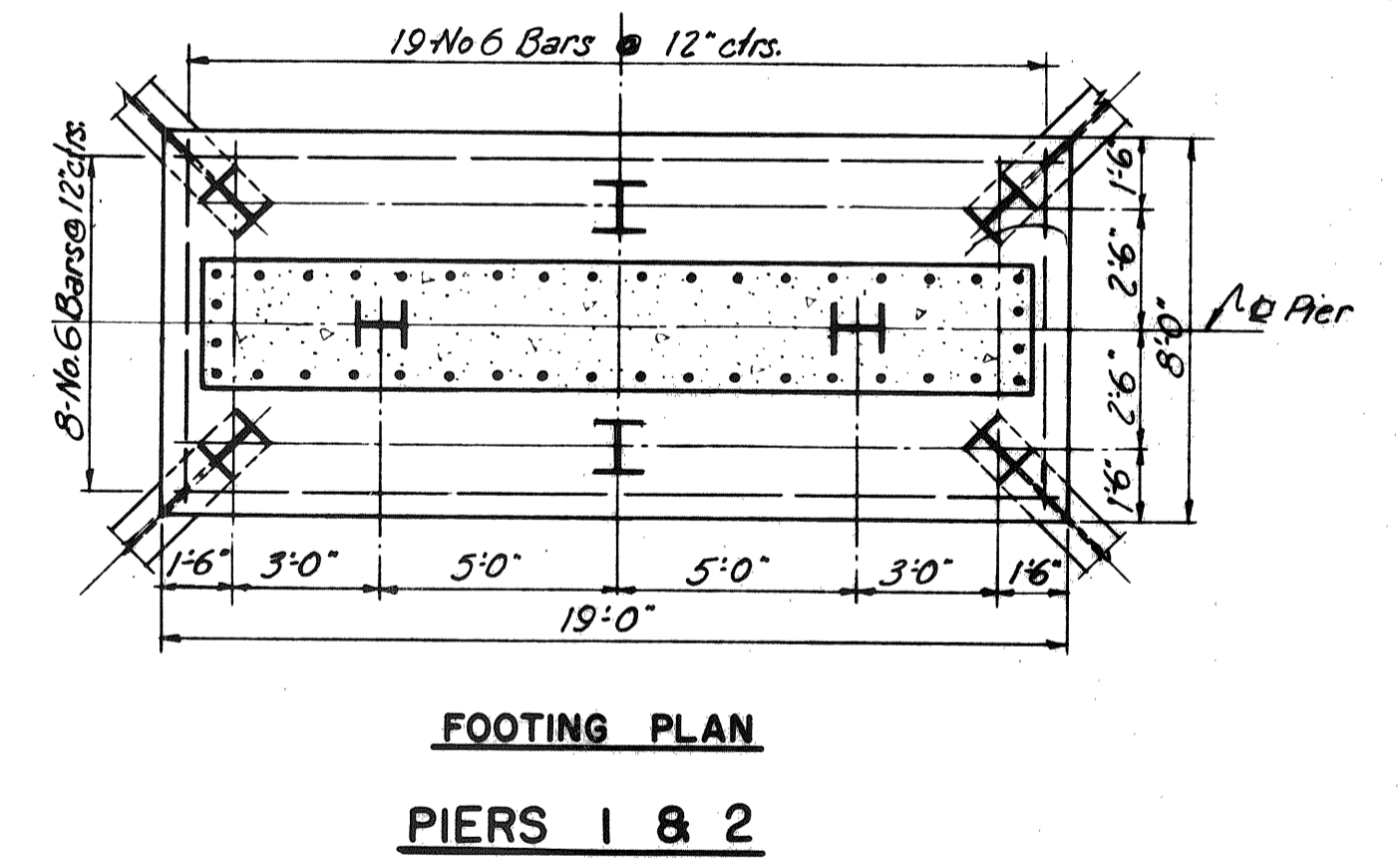
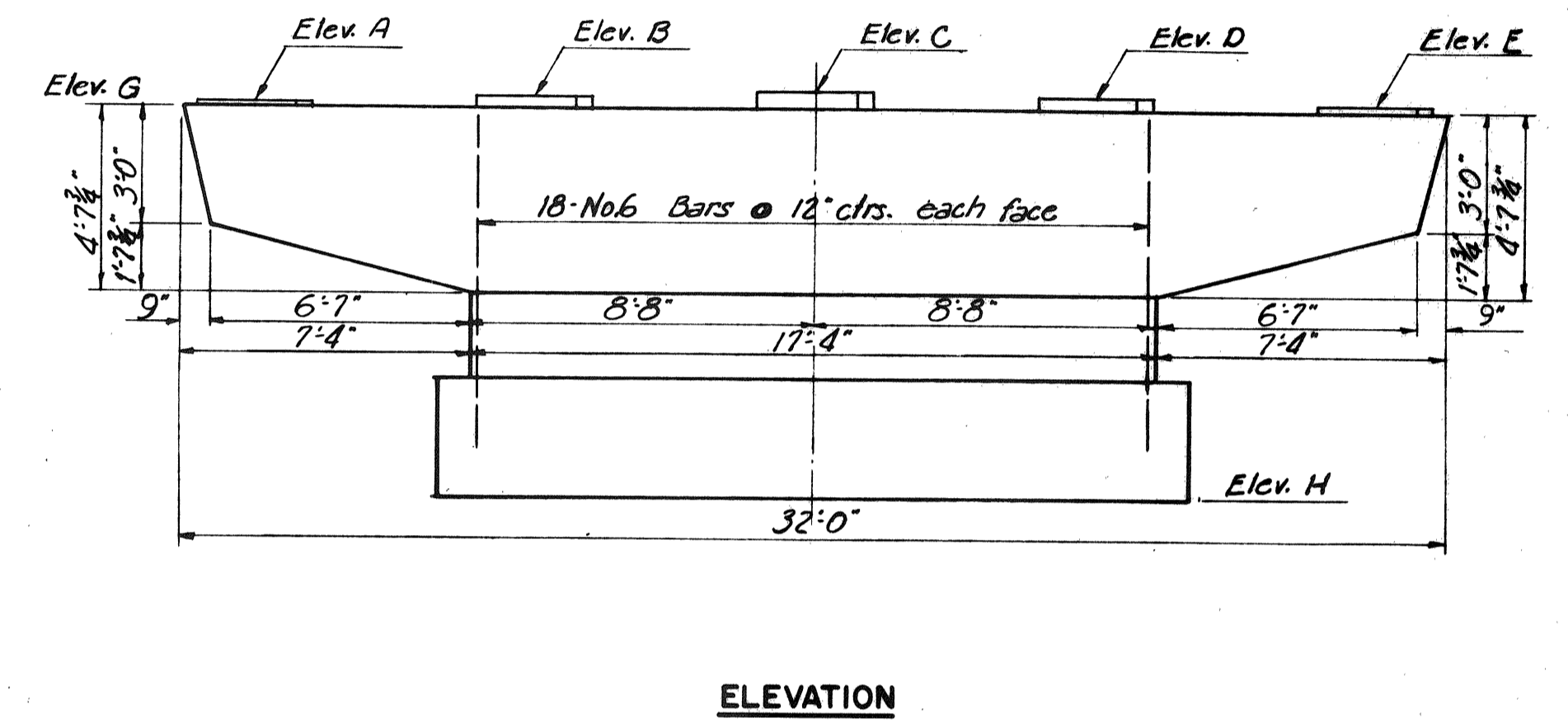
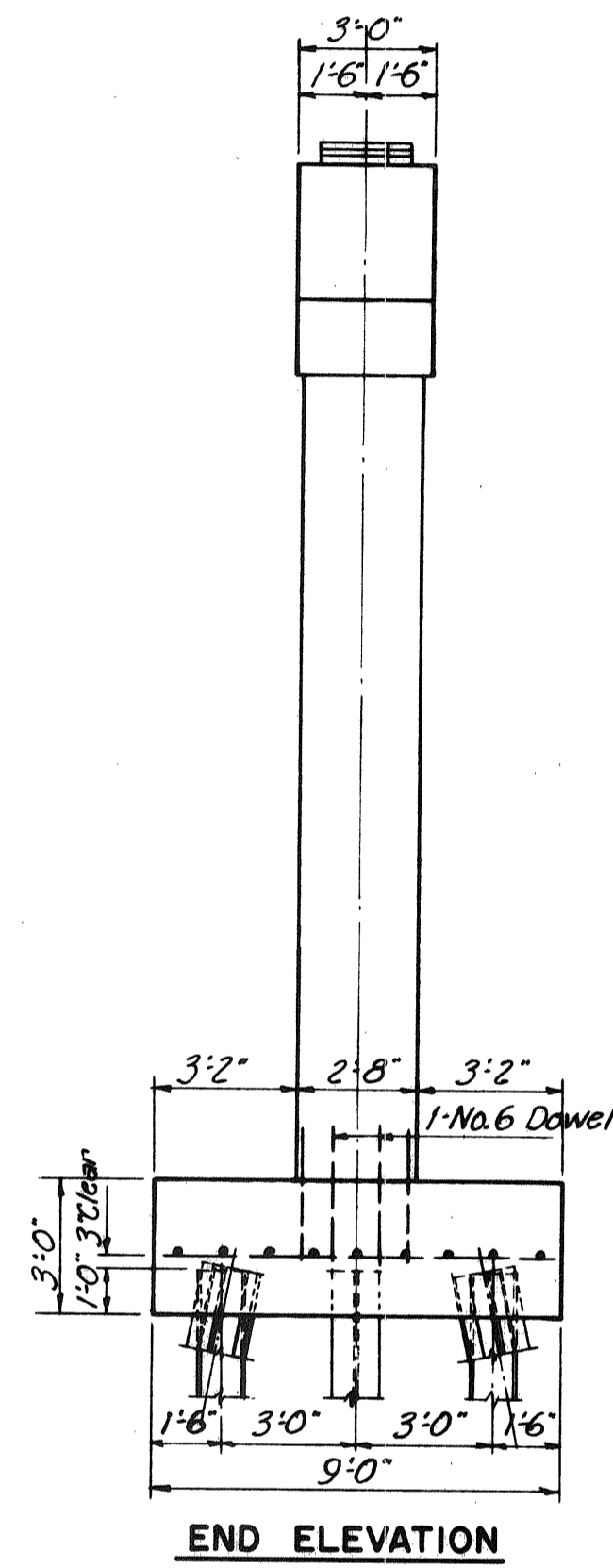
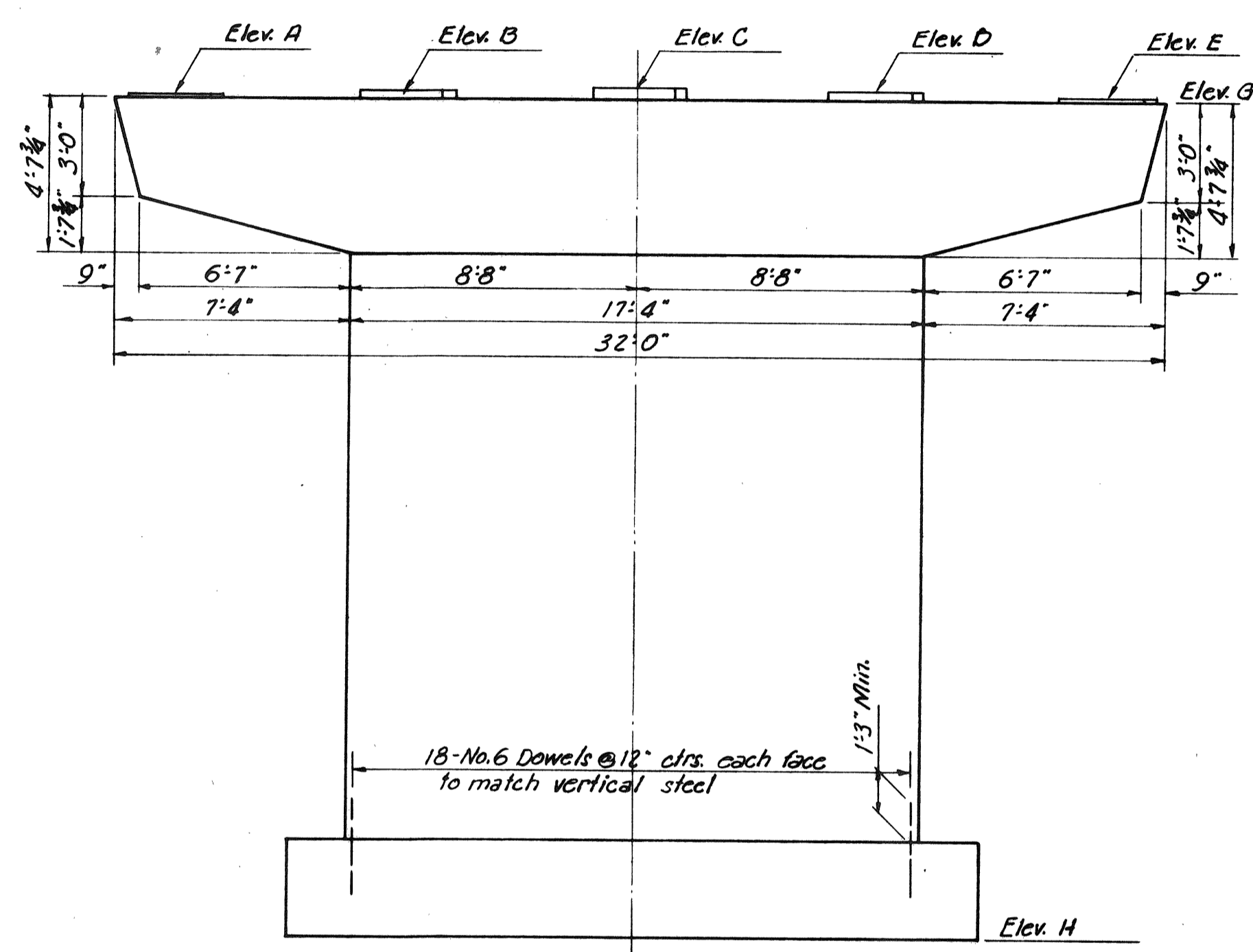
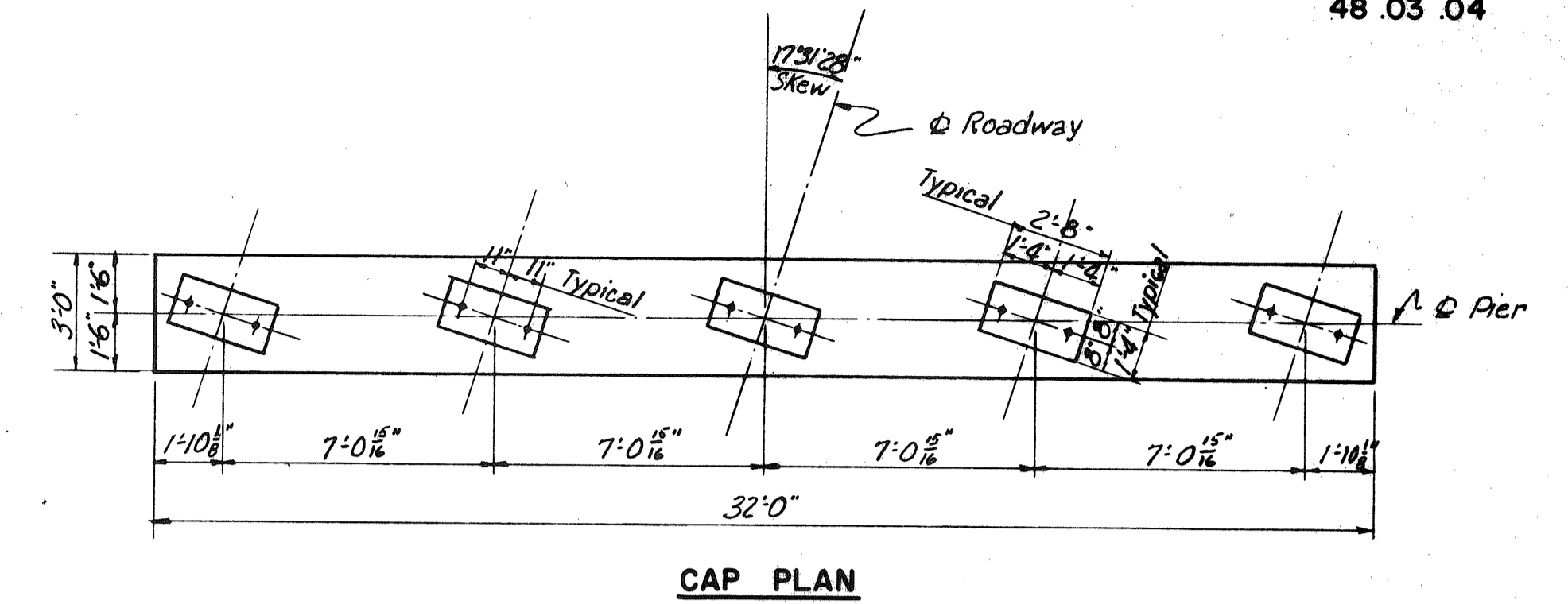
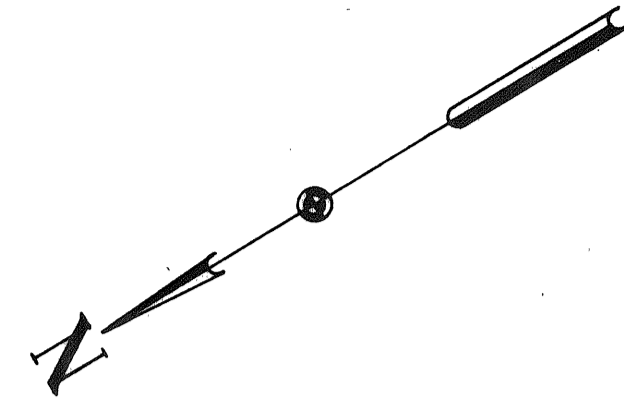
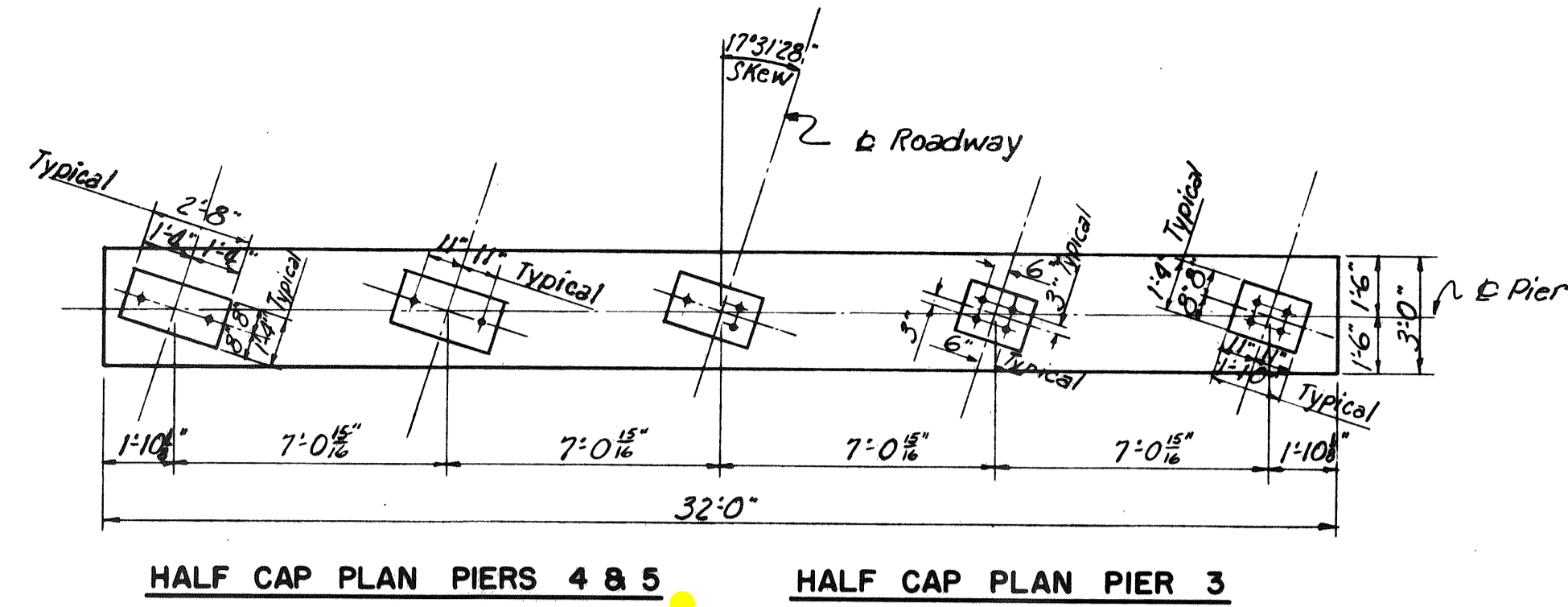


DRAWING 48.02.04

BY	DATE		
MADE	WCM	4-22-54	
TRACED			
CHECKED	F.S.	4-30-54	1 As-Built 18N/1856
IN CHARGE OF I.D.S.K.	No.	REVISION	BY DATE

MAINE TURNPIKE AUTHORITY <b>MAINE TURNPIKE</b> SECTION 2— PORTLAND TO AUGUSTA STRUCTURE NO. 48 STA 3756+00.21 TURNPIKE UNDER RELOCATED STATE HIGHWAY ROUTE 122 AND LEWISTON AUBURN AIRPORT ROAD <b>ABUTMENTS</b>	
HOWARD, NEEDLES, TAMMEN & BERGENDOFF CONSULTING ENGINEERS NEW YORK KANSAS CITY	SCALE: 1/4" = 1'-0" CONTRACT NO. _____ SHEET NO. 208 OF 322





ELEVATIONS							
PIER	A	B	C	D	E	G	H
1	234.00	234.04	234.10	233.98	233.87	233.85	224.00
2	234.63	234.69	234.76	234.66	234.57	234.55	224.00
3	235.03	235.10	235.19	235.10	235.02	235.00	210.50
4	234.67	234.76	234.86	234.78	234.72	234.65	213.00
5	234.06	234.17	234.29	234.23	234.18	234.04	210.50

Note: Piles shall be 12 BP53.  
Batter piles 3 in. per ft. in direction shown.

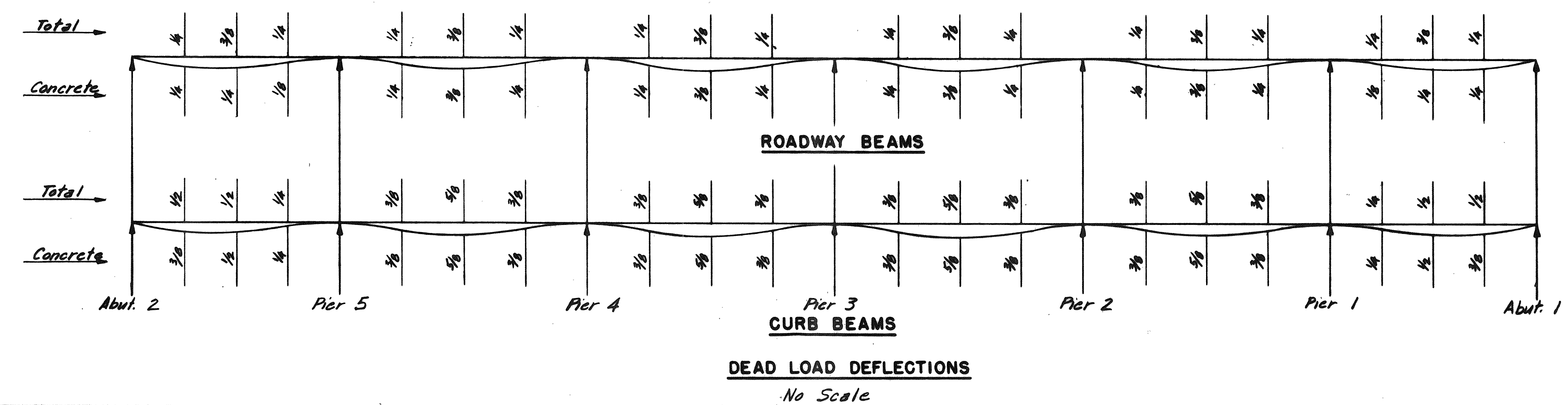
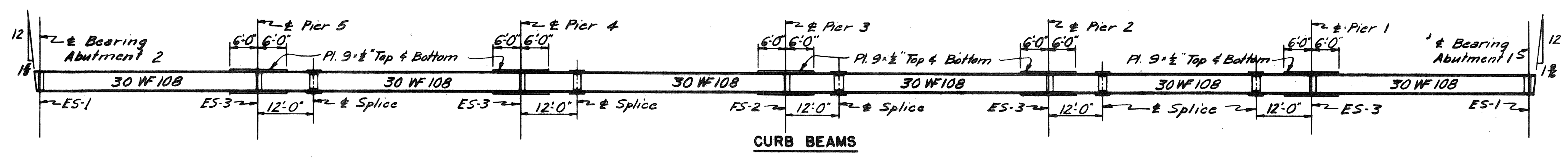
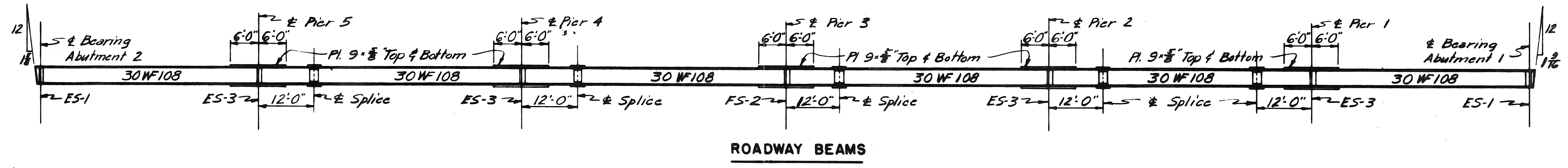
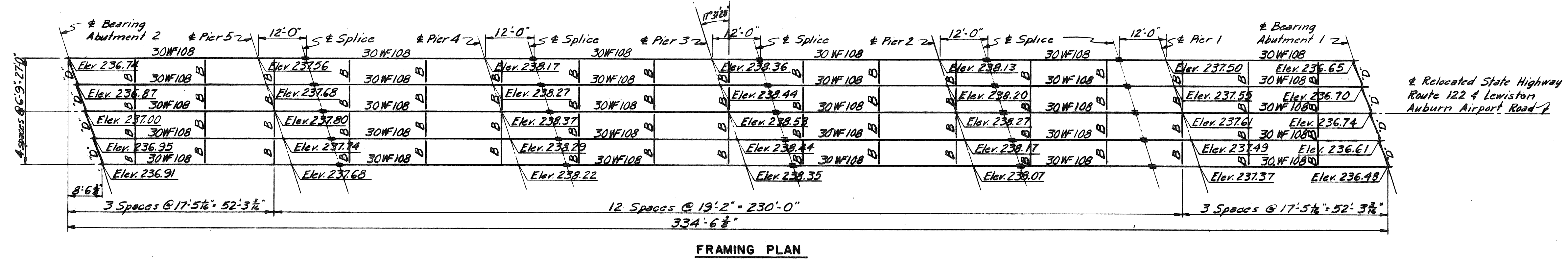
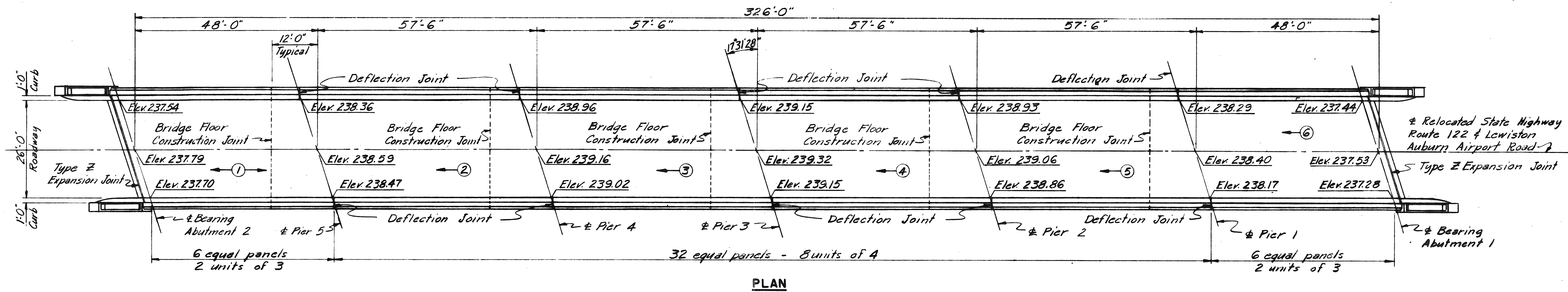
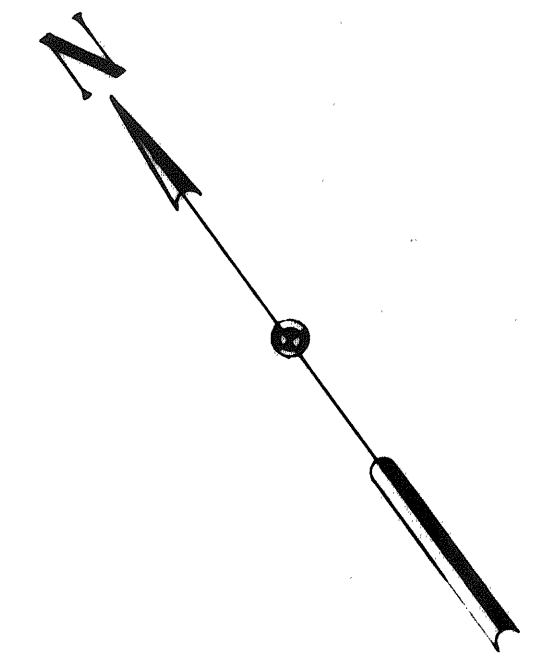
MAINE TURNPIKE AUTHORITY  
**MAINE TURNPIKE**  
 SECTION 2 - PORTLAND TO AUGUSTA  
 STRUCTURE NO. 48 STA 3736+00.21 TURNPIKE UNDER  
 RELOCATED STATE HIGHWAY ROUTE 122  
 AND LEWISTON AUBURN AIRPORT ROAD  
 PIERS  
 HOWARD, NEEDLES, TAMMEN & BERGENDOFF  
 CONSULTING ENGINEERS  
 NEW YORK      KANSAS CITY

SCALE: 1/4" = 1'-0"  
 CONTRACT NO. \_\_\_\_\_  
 SHEET NO. 209 OF 302

DRAWING NO. 48.03.04

MADE	BY	DATE	IN CHARGE OF	No.	REVISION	BY	DATE
	NER	4-26-54	IDSK				
CHECKED	F.S.	4-30-54			As-Built	HBH	11-8-56





DRAWING 4804.04

MADE	BY	DATE			
	RFS	4-28-54			
TRACED					
CHECKED	F.S.	4-30-54	1	As-Built	NBH/VBS
IN CHARGE OF	IDSK				
	No.	REVISION	BY	DATE	

MAINE TURNPIKE AUTHORITY  
**MAINE TURNPIKE**  
 SECTION 2— PORTLAND TO AUGUSTA

STRUCTURE NO. 48 STA 3736 +00.21 TURNPIKE UNDER  
 RELOCATED STATE HIGHWAY ROUTE 122  
 AND LEWISTON AUBURN AIRPORT ROAD  
 SUPERSTRUCTURE

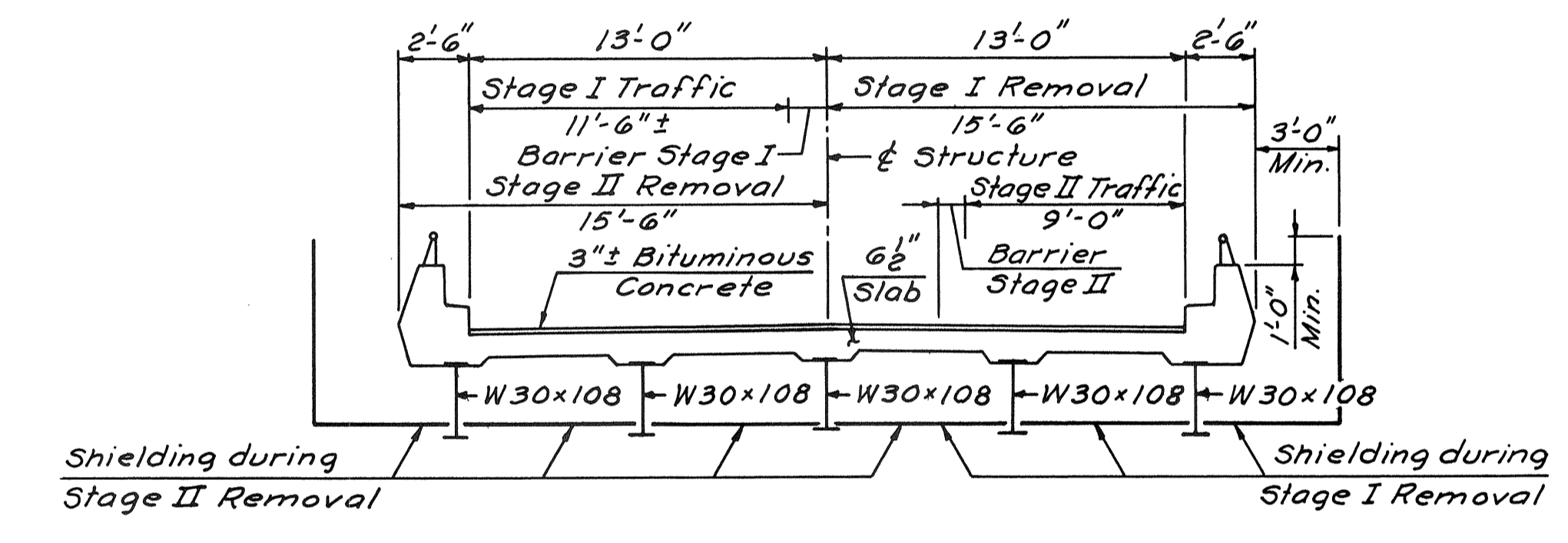
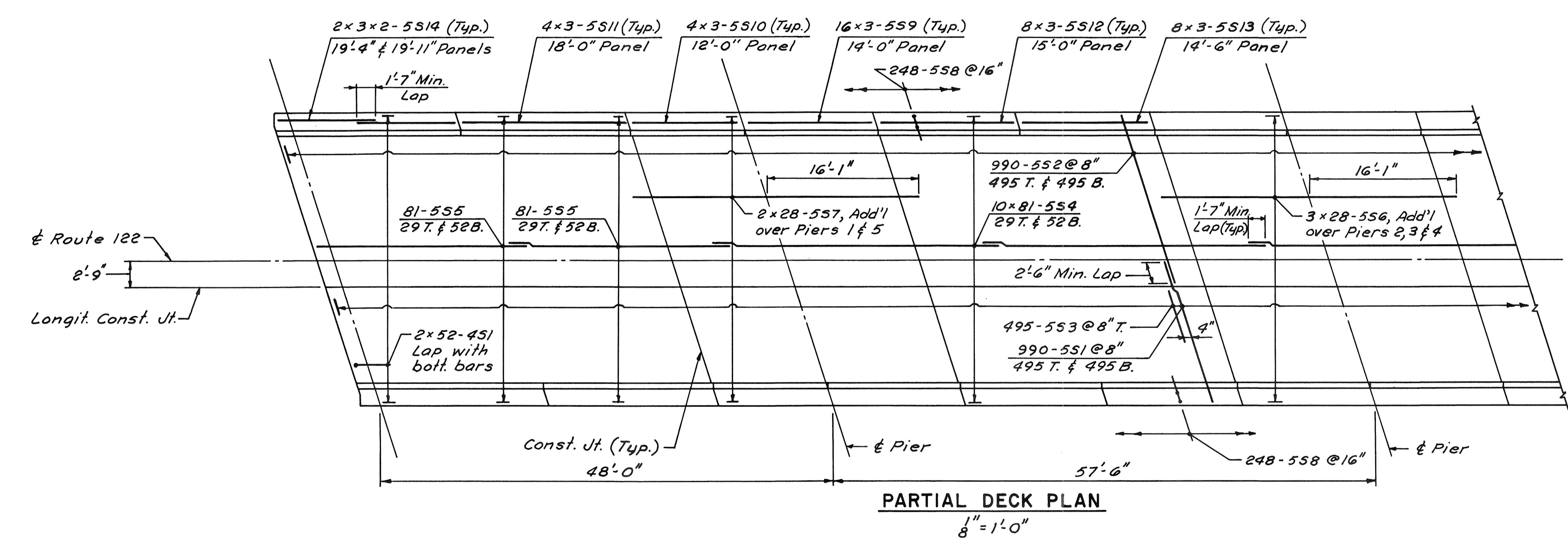
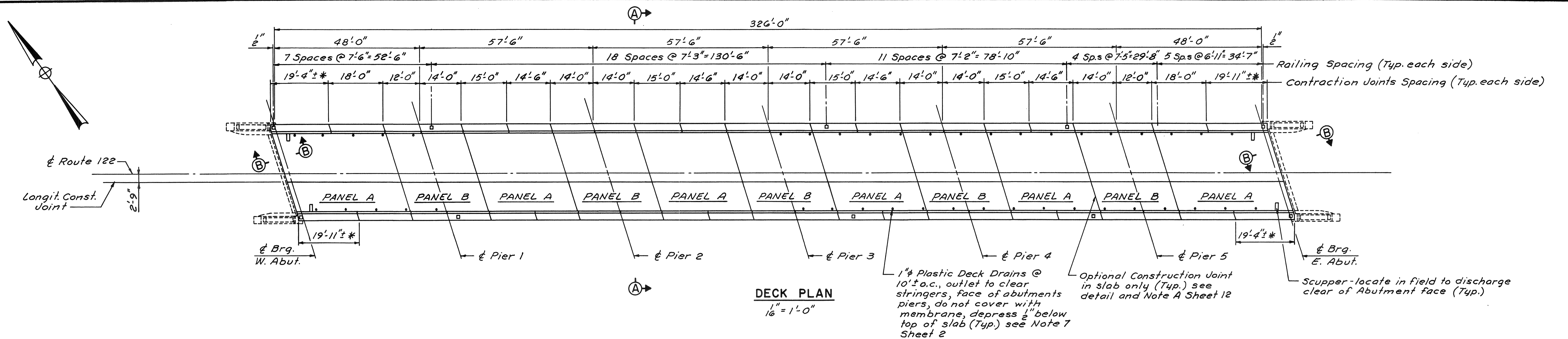
HOWARD, NEEDLES, TAMMEN & BERGENDOFF  
 CONSULTING ENGINEERS  
 NEW YORK KANSAS CITY

SCALE: 1/4" = 1'-0"  
 CONTRACT NO. \_\_\_\_\_  
 SHEET NO. 210 OF 302

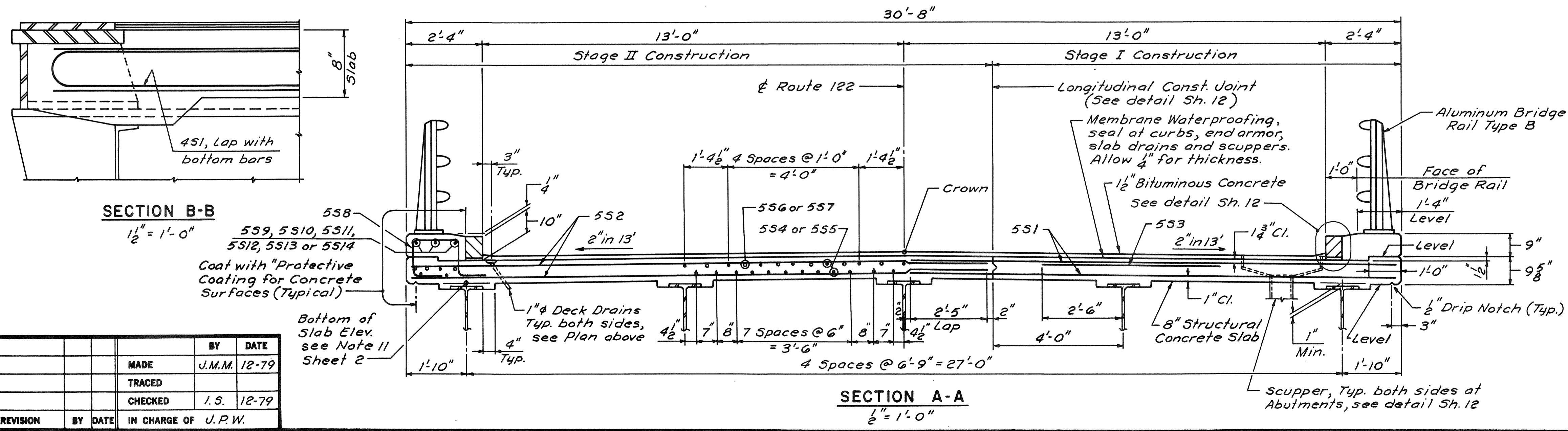
Route 122 Underpass

1980 Redecking Plans





- NOTES:**
1. For General Notes and Quantities, see Sheet 2.
  2. For Barrier Detail, see Sheet 12.
  3. For Railing Details, see Sheet 12.
  4. For 1" V-Groove Detail, see Sheet 12.
  5. \* Length of last section of curbing to be field checked.



**SECTION B-B**  
1/2" = 1'-0"

558, 559, 5510, 5511, 5512, 5513 or 5514

Coat with "Protective Coating for Concrete Surfaces (Typical)"

Bottom of Slab Elev. see Note 11 Sheet 2

NO.	REVISION	BY	DATE	IN CHARGE OF	J.P.W.
		MADE	J.M.M. 12-79		
		TRACED			
		CHECKED	I.S. 12-79		

MAINE TURNPIKE AUTHORITY  
**MAINE TURNPIKE**

ROUTE 122  
**DECK REPLACEMENT**

HOWARD, NEEDLES, TAMMEN & BERGENDOFF  
CONSULTING ENGINEERS  
BOSTON

SCALE AS NOTED

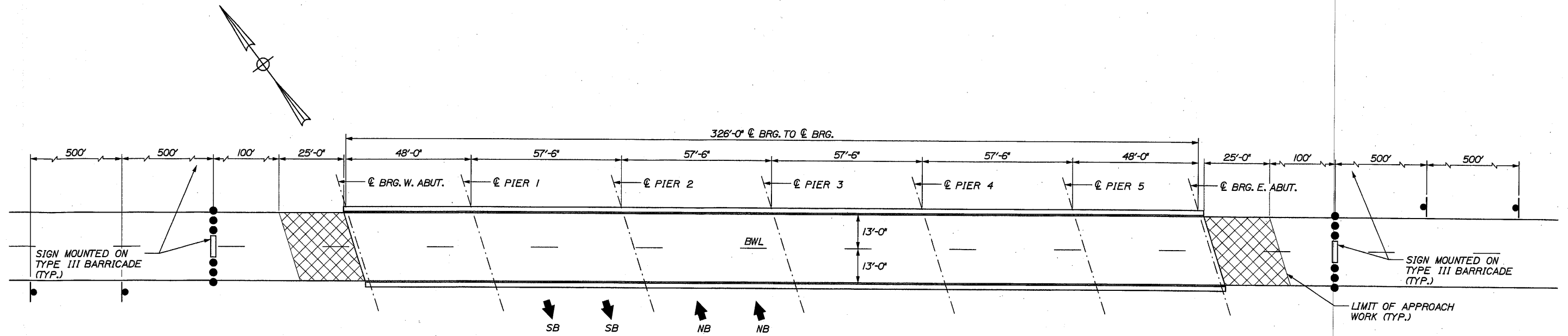
SHEET NO. 8 of 20

Route 122 Underpass  
2008 Substructure Repair Plans

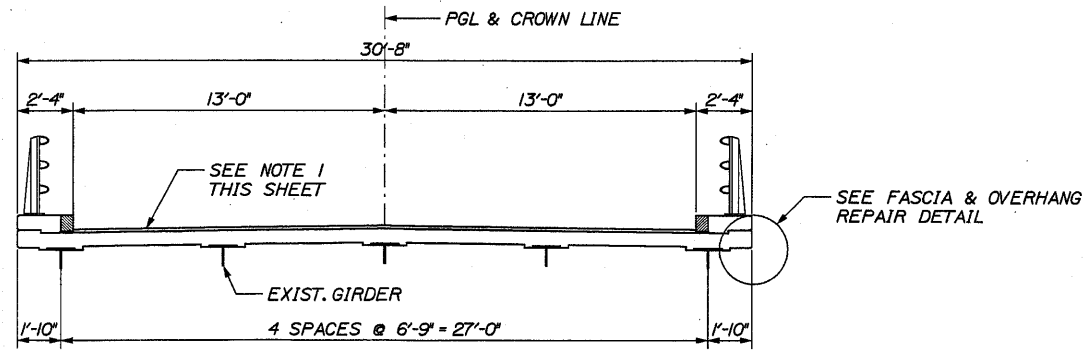


Date: 3/26/2008

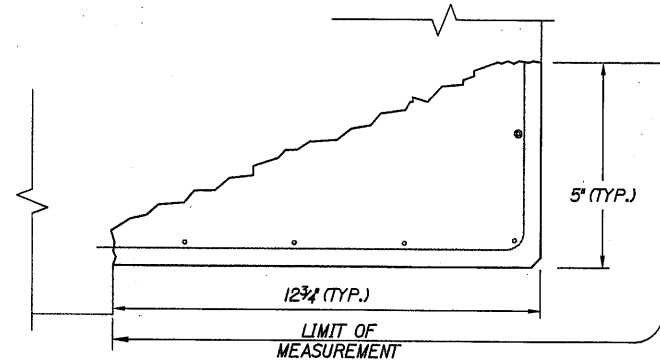
Filename: M:\jobs\090009\959 Bridge Repair\030 2008 Bridge Repair\CAD\200805\006\_R122Deck.dgn



DECK PLAN  
1" = 20'



TRANSVERSE SECTION  
1/4" = 1'-0"



FASCIA & OVERHANG REPAIR DETAIL  
N.T.S.

NOTES:

- 1) REMOVE AND DISPOSE EXISTING MEMBRANE (1/4") AND PAVEMENT (1-1/2"); INSTALL 1-1/2" HOT MIX ASPHALT, 9.5 mm NOMINAL MAXIMUM SIZE ON HIGH PERFORMANCE MEMBRANE. REMOVAL OF EXISTING SOUND CONCRETE PATCHES IN BITUMINOUS PAVEMENT AND RESURFACING OR LEVELING THE SOUND PATCHES FLUSH WITH THE CONCRETE SURFACE SHALL BE INCIDENTAL TO THE ITEM 202.202.
- 2) REPAIR DECK CONCRETE TO THE LIMITS DELINEATED BY THE RESIDENT. PAYMENT TO BE MADE UNDER 518.80 AND 518.81.
- 3) REMOVE PAVEMENT FULL DEPTH OVER BACKWALLS TO EXPOSE CONCRETE. REPAIR BACKWALL CONCRETE TO THE LIMITS DELINEATED BY THE RESIDENT. PAYMENT TO BE MADE UNDER 518.80.
- 4) SEAL SHOULDER AREAS WITH TWO APPLICATIONS OF EMULSIFIED BITUMINOUS SEALER PER MDT STANDARD SPECIFICATION 403.03 @ AFTER COMPLETING ALL DECK PAVING WORK.
- 5) RETROFIT ALL EXISTING ALUMINUM BRIDGE RAIL SPLICES NOT IN CONFORMANCE WITH THE ALUMINUM BRIDGE RAILING - SPLICE MODIFICATION DETAIL. PAYMENT TO BE MADE UNDER 507.095.
- 6) MODIFY THE EXISTING EXPANSION JOINTS PER THE EXPANSION JOINT MODIFICATION DETAILS AND SPECIFICATIONS. PAYMENT TO BE MADE UNDER 520.2211.
- 7) REPAIR THE DECK FASCIAS AND OVERHANGS TO THE LIMITS DELINEATED BY THE RESIDENT PER THE FASCIA & OVERHANG REPAIR DETAIL AND SPECIFICATIONS. PAYMENT TO BE MADE UNDER 518.6315.
- 8) PLUG OR EXTEND ALL DECK WEEPS WHICH DRAIN ONTO PIERS, ABUTMENTS OR STRUCTURAL STEEL AS DIRECTED BY THE RESIDENT. PAYMENT SHALL BE BY THE VARIOUS LABOR AND EQUIPMENT ITEMS.

Scale:

Designed by:



HNTB CORPORATION  
2 Thomas Drive  
Westbrook, ME 04092  
TEL (207) 774-5155  
FAX (207) 772-7410



THE GOLD STAR  
MEMORIAL HIGHWAY

CONCRETE REPAIR, MEMBRANE AND PAVING  
MM 59.9, MM 74.0, MM 93.3 AND MM 102.0  
ROUTE 122 MM 74.0  
DECK PLAN, SECTIONS AND DETAILS

No.	Revision	By	Date

	By	Date		By	Date
Designed	CAH	03/08	Checked	MDD	03/08
Drawn	MPC	03/08	In Charge of	RAL	03/08

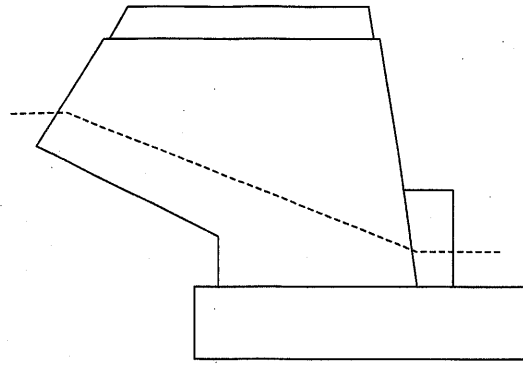
CONTRACT: 2008.05

SHEET NUMBER: R122-1

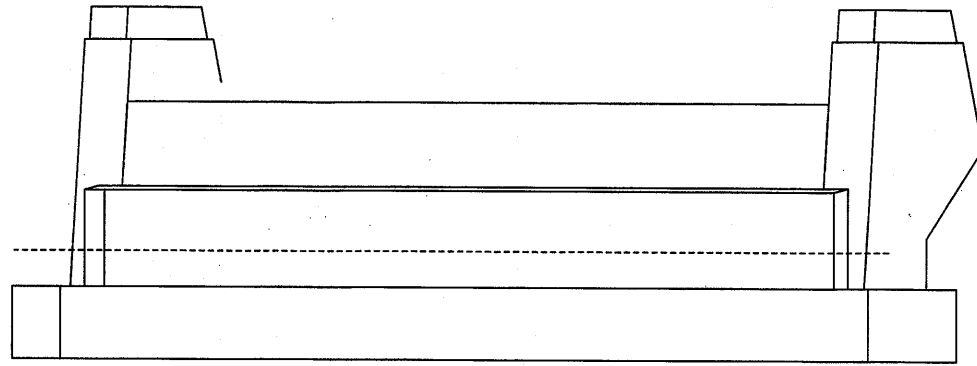
6 OF 21

Date: 3/26/2008

Filename: M:\jobs\09009\959 Bridge Repair\030 2008 Bridge Repairs\CAD\200805\007\_R1122SUBSTR.dgn

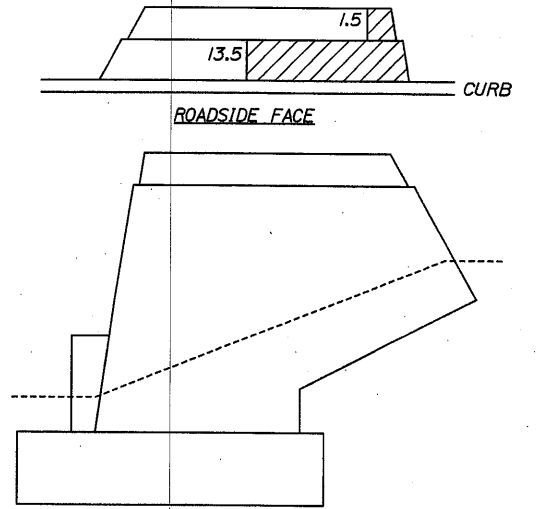


SOUTHWEST WINGWALL

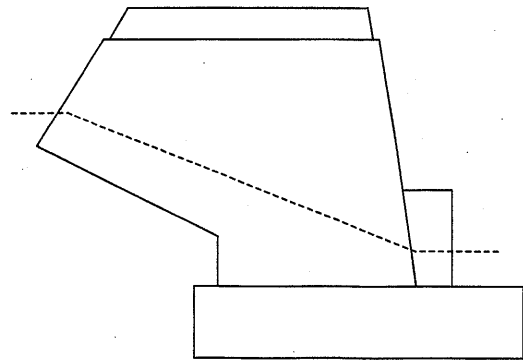
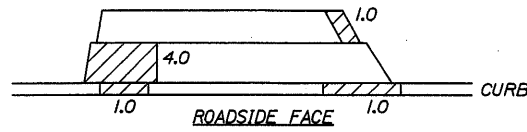


WEST ABUTMENT

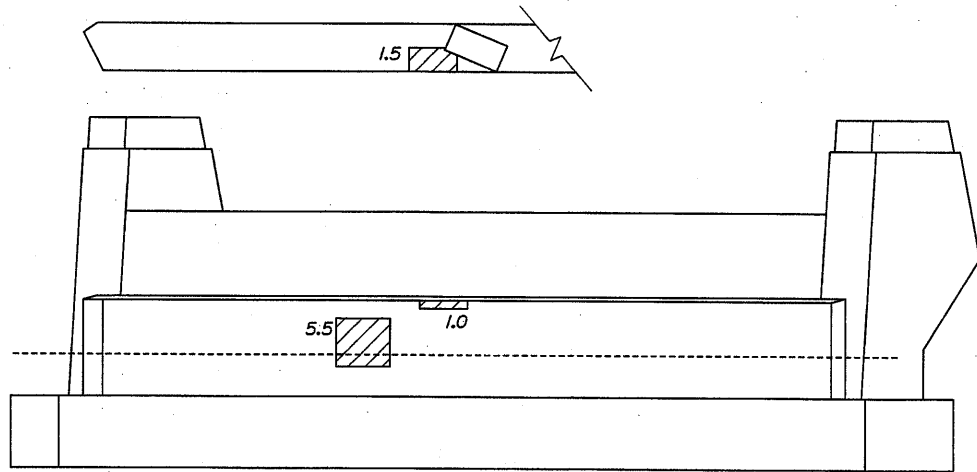
ESTIMATED REPAIR QUANTITIES (INCLUDING WINGWALL AND END POSTS) = 15.0 SF



NORTHWEST WINGWALL

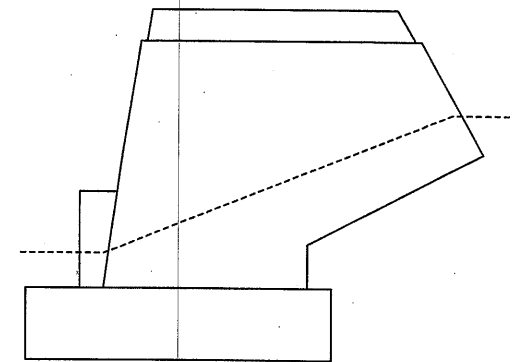


NORTHEAST WINGWALL



EAST ABUTMENT

ESTIMATED REPAIR QUANTITIES (INCLUDING WINGWALLS AND END POSTS) = 15.0 SF



SOUTHEAST WINGWALL

Scale:

No.	Revision	By	Date

Designed by:

**HNTB**

	By	Date		By	Date
Designed	CAH	03/08	Checked	MDD	03/08
Drawn	MPC	03/08	In Charge of	RAL	03/08

HNTB CORPORATION  
 2 Thomas Drive  
 Westbrook, ME 04092  
 TEL (207) 774-5155  
 FAX (207) 772-7410



**THE GOLD STAR  
 MEMORIAL HIGHWAY**

CONCRETE REPAIR, MEMBRANE AND PAVING  
 MM 59.9, MM 74.0, MM 93.3 AND MM 102.0  
 ROUTE 122 MM 74.0  
 SUBSTRUCTURE REPAIRS I

CONTRACT: 2008.05

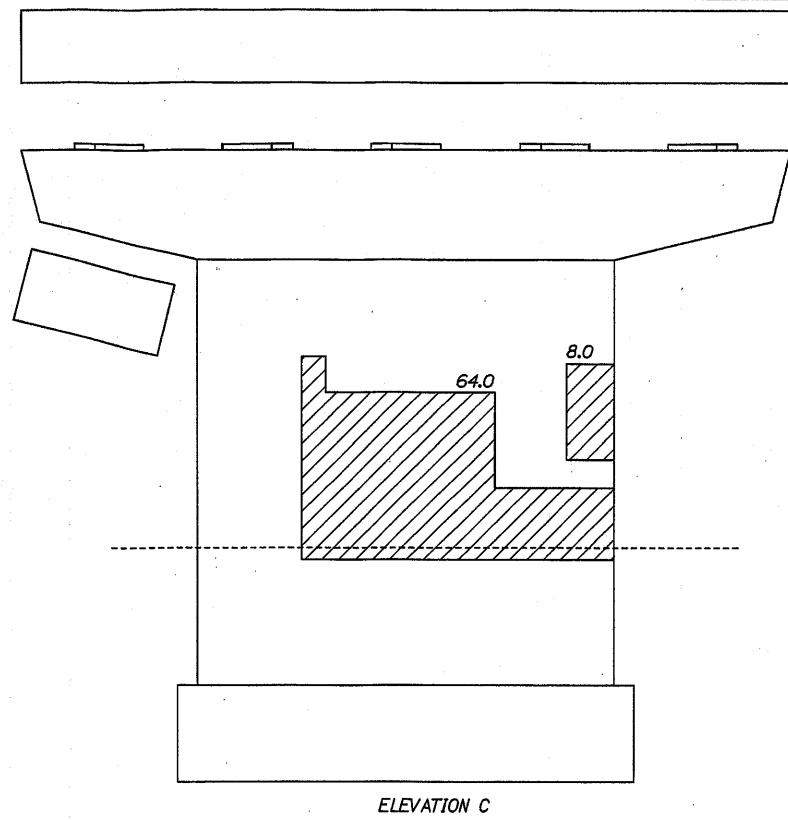
SHEET NUMBER: R122-2

7 OF 21

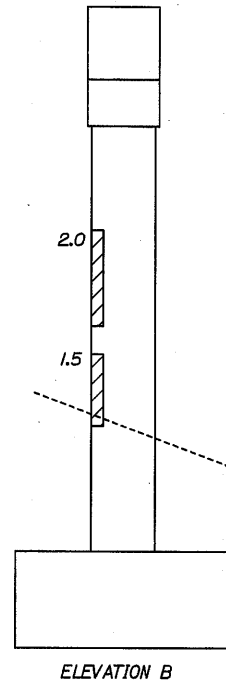


Date: 3/26/2008

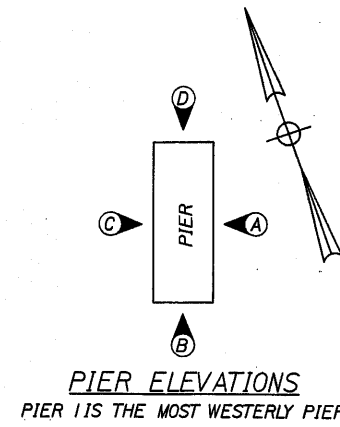
Filename: M:\jobs\090009\959 Bridge Repair\030 2008 Bridge Repairs\CAD\200805\008\_R1122SUBSTR.dgn



ELEVATION C

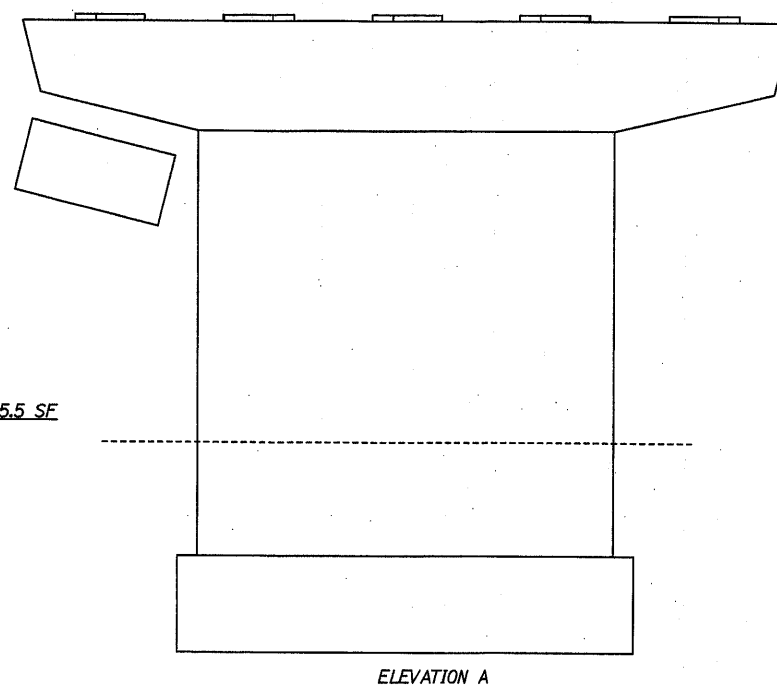


ELEVATION B

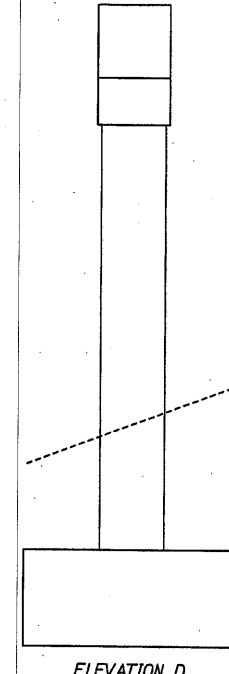


PIER ELEVATIONS  
PIER 1 IS THE MOST WESTERLY PIER

ESTIMATED REPAIR QUANTITIES = 75.5 SF

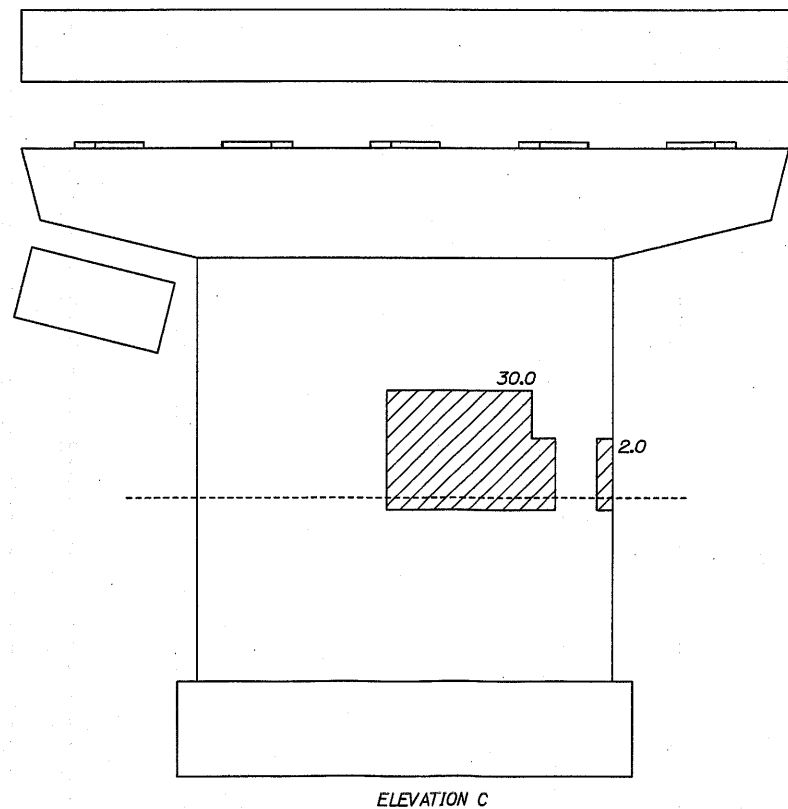


ELEVATION A

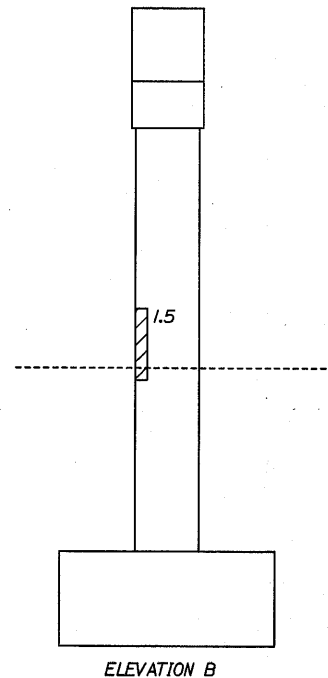


ELEVATION D

PIER 3

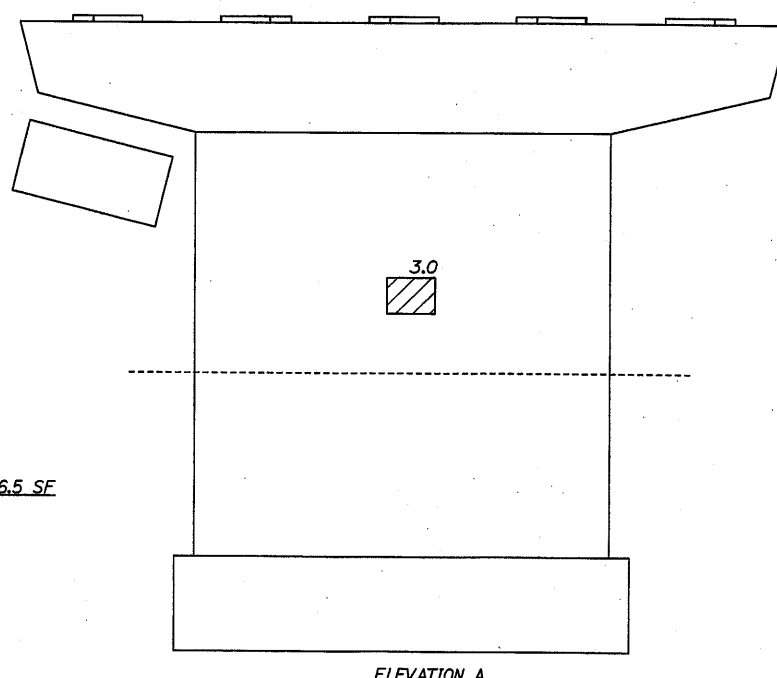


ELEVATION C

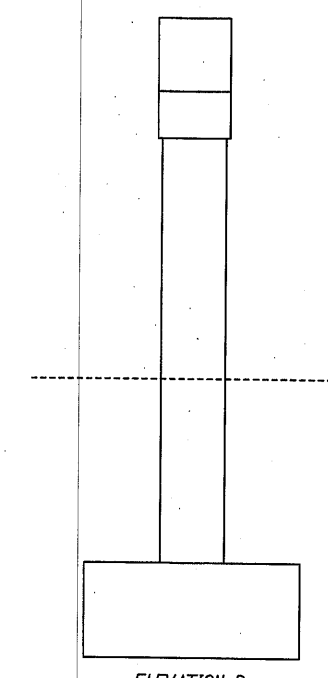


ELEVATION B

ESTIMATED REPAIR QUANTITIES = 36.5 SF



ELEVATION A



ELEVATION D

PIER 4 (MEDIAN)

Scale:

Designed by:



HNTB CORPORATION  
2 Thomas Drive  
Westbrook, ME 04092  
TEL (207) 774-5155  
FAX (207) 772-7410



THE GOLD STAR  
MEMORIAL HIGHWAY

CONCRETE REPAIR, MEMBRANE AND PAVING  
MM 59.9, MM 74.0, MM 93.3 AND MM 102.0  
ROUTE 122 MM 74.0  
SUBSTRUCTURE REPAIRS II

No.	Revision	By	Date

	By	Date		By	Date
Designed	CAH	03/08	Checked	MDD	03/08
Drawn	MPC	03/08	In Charge of	RAL	03/08

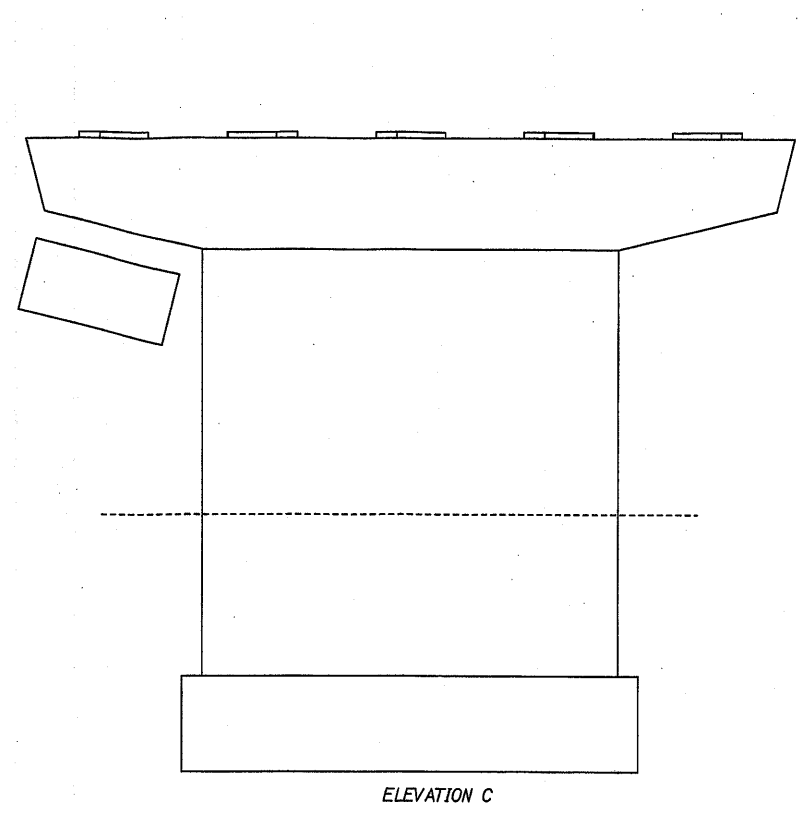
CONTRACT: 2008.05

SHEET NUMBER: R122-3

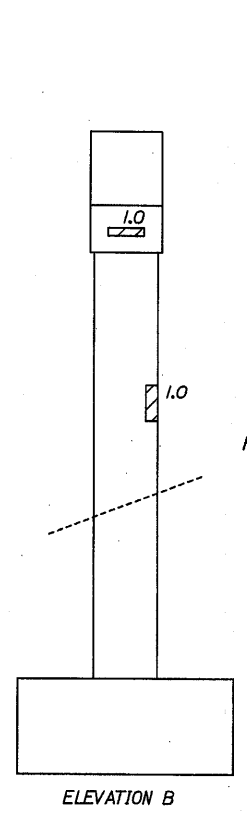
8 OF 21

Date: 3/26/2008

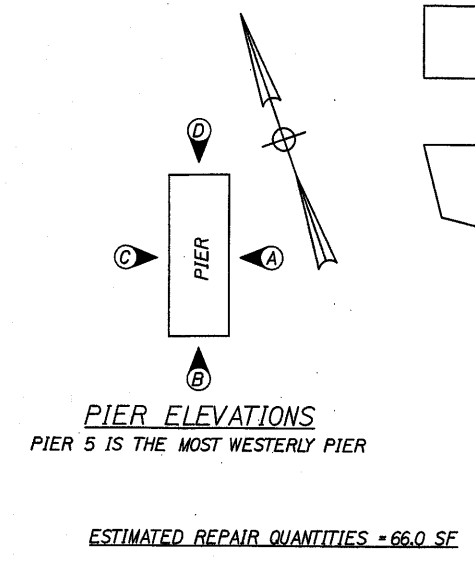
Filename: M:\jobs\09009\959 Bridge Repair\030 2008 Bridge Repairs\CAD\200805\009\_R1122SUBSTR.dgn



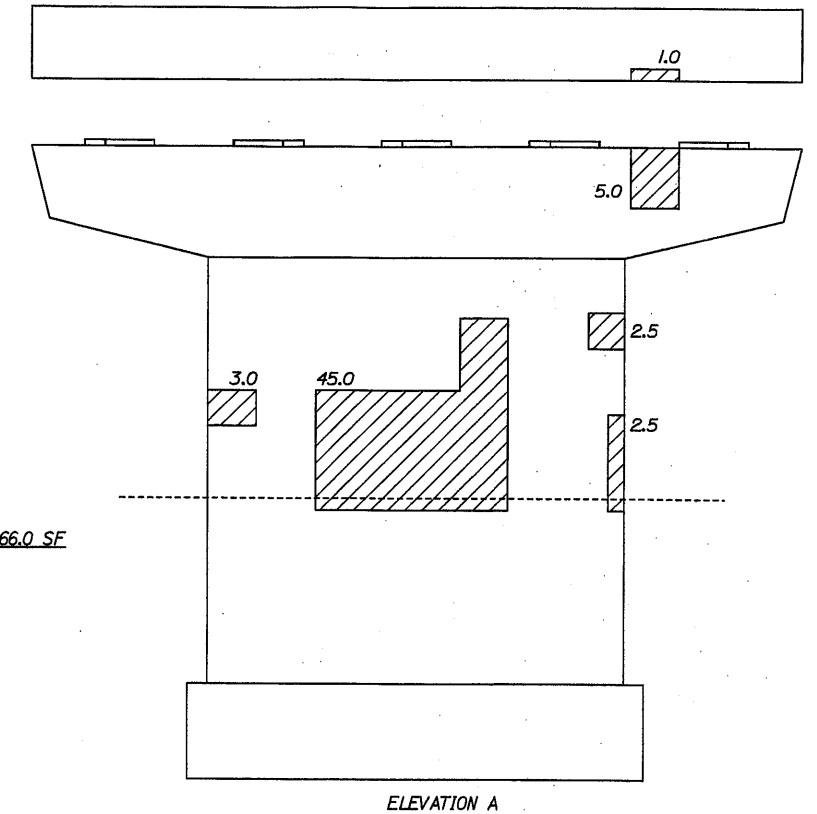
ELEVATION C



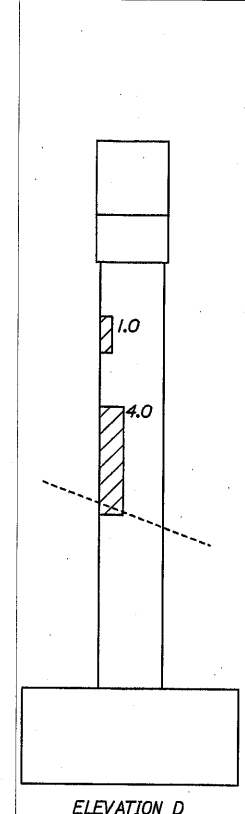
ELEVATION B



PIER 5



ELEVATION A



ELEVATION D

Scale:


No.	Revision	By	Date

Designed by:

**HNTB**

	By	Date		By	Date
Designed	CAH	03/08	Checked	MDD	03/08
Drawn	MPC	03/08	In Charge of	RAL	03/08

HNTB CORPORATION  
 2 Thomas Drive  
 Westbrook, ME 04092  
 TEL (207) 774-5155  
 FAX (207) 772-7410



**THE GOLD STAR  
 MEMORIAL HIGHWAY**

CONCRETE REPAIR, MEMBRANE AND PAVING  
 MM 59.9, MM 74.0, MM 93.3 AND MM 102.0  
 ROUTE 122 MM 74.0  
 SUBSTRUCTURE REPAIRS III

CONTRACT: 2008.05

SHEET NUMBER: R122-4  
 9 OF 21